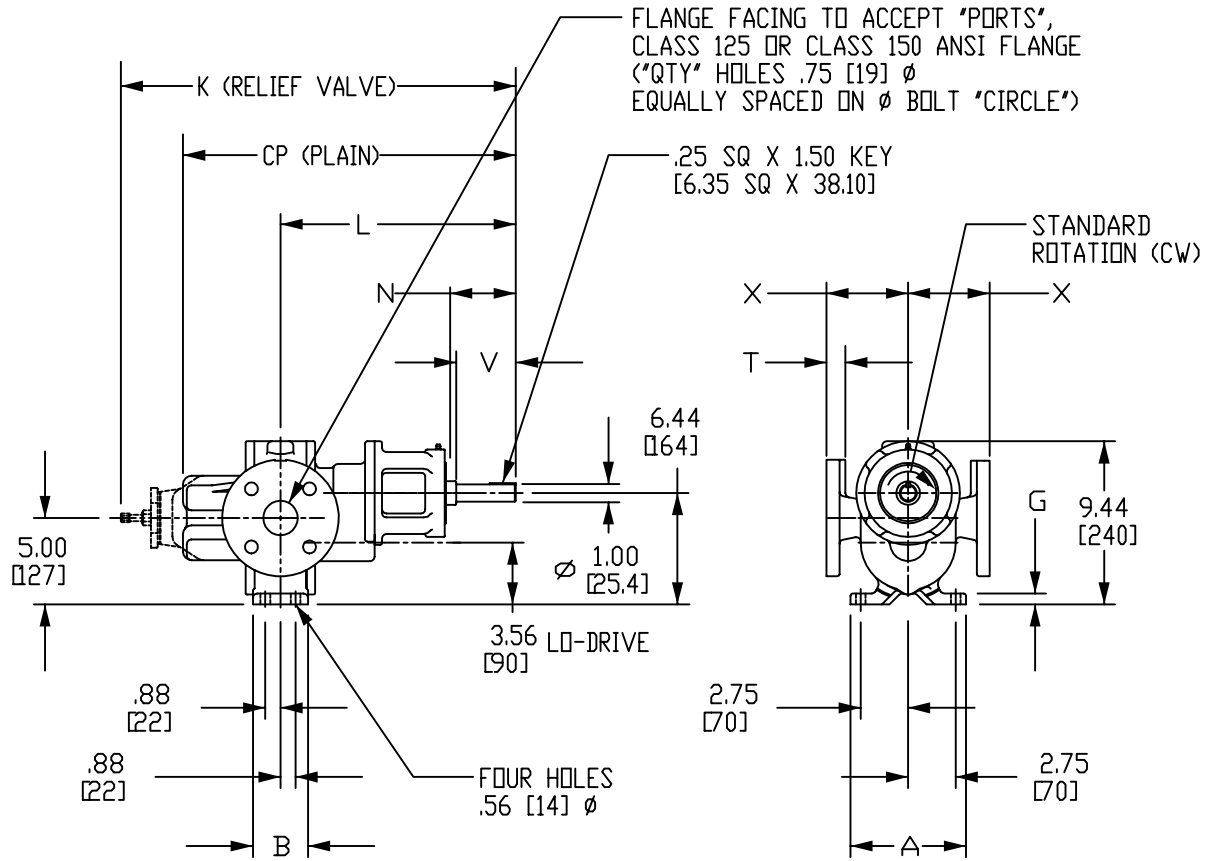
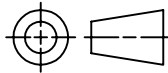


# Z11-Z22 XX4ABH TYPE 1



PROJECTION

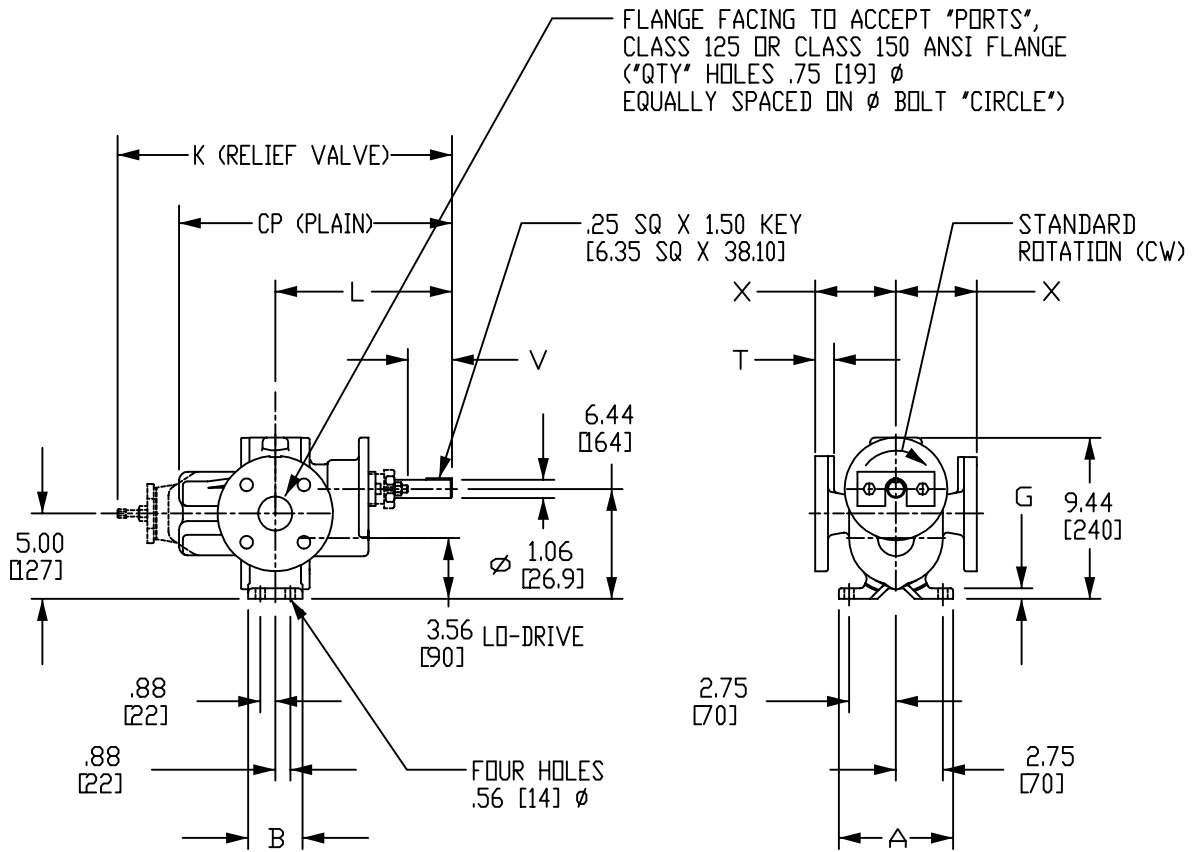


DO NOT SCALE  
DIMS IN INCHES [MM]

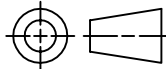
N = SHAFT END TO BRG CAGE  
V = FREE SHAFT LENGTH

PUMP	A	B	CP	G	K	L	N	PORTS	QTY	CIRCLE	T	V	X
Z11PX4ABH	6.50 [165]	3.00	19.32	.62	22.92	13.69 [348]	3.80	2.0	FOUR	4.75	.75	3.45	4.17
Z11RX4ABH		[76]	[491]	[16]	[582]		[97]	[51]			[121]	[19]	[88]
Z17PX4ABH	6.50 [165]	4.50	20.07	.75 [19]	23.67	13.69 [348]	3.05 [77]	3.0	FOUR	6.00	.94 [24]	2.70 [69]	4.41
Z17RX4ABH		[114]	[510]		[610]			[76]		[152]			[112]
Z22PX4ABH	7.00	3.62	21.57	.75 [19]	25.17	14.44	3.05 [77]	4.0	EIGHT	7.50	.94 [24]	2.70 [69]	4.85
Z22RX4ABH	[178]	[92]	[548]		[639]	[367]		[102]		[191]			[123]

# Z11-Z22 XX4ANH TYPE 1



PROJECTION

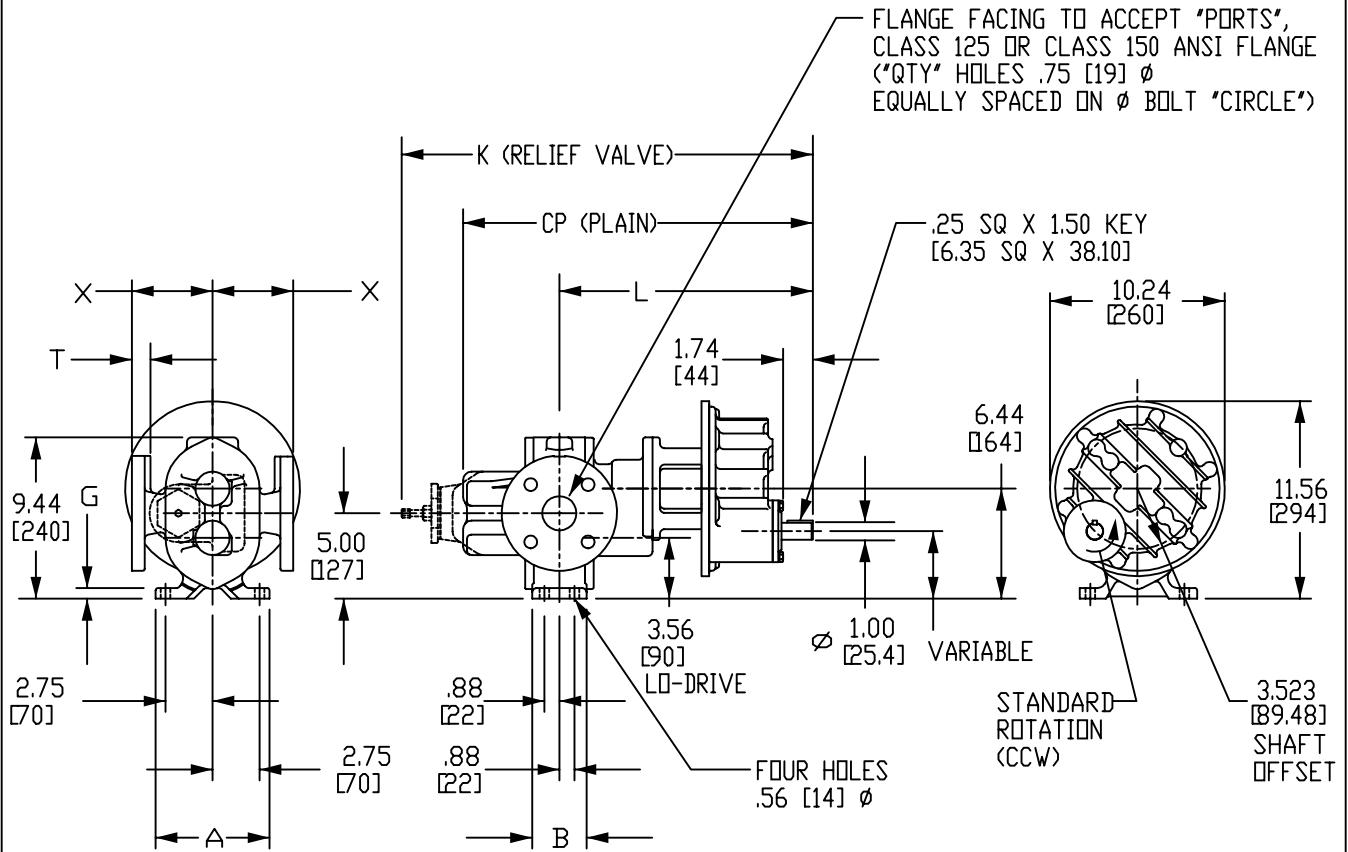


DO NOT SCALE  
DIMS IN INCHES [MM]

▲ PACKED BOX  
★ MECH SEAL

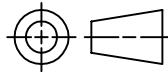
PUMP	A	B	CP	G	K	L	PORTS	QTY	CIRCLE	T	▲ V	★	X
Z11PX4ANH	6.68	3.19	15.97	.62	19.57		2.0	FOUR	4.75	.75	2.58	4.18	4.17
Z11RX4ANH	[170]	[81]	[406]	[16]	[497]	10.34	[51]		[121]	[19]	[66]	[106]	[106]
Z17PX4ANH	6.75	4.50	16.72		20.33		3.0	FOUR	6.00		1.83	3.43	4.41
Z17RX4ANH	[171]	[114]	[425]	.75	[516]		[76]		[152]	.94	[47]	[87]	[112]
Z22PX4ANH	7.00	3.62	18.59		22.19	11.46	4.0	EIGHT	7.50		2.20	3.80	4.85
Z22RX4ANH	[178]	[92]	[472]		[564]	[291]	[102]		[191]	[24]	[56]	[96]	[123]

# Z11-Z22 XX4A0G TYPE 1



CAUTION:  
LO-DRIVE CONFIGURATION CAUSES GEARBOX TO  
PROJECT BELOW MOUNTING SURFACE OF PUMP.

PROJECTION

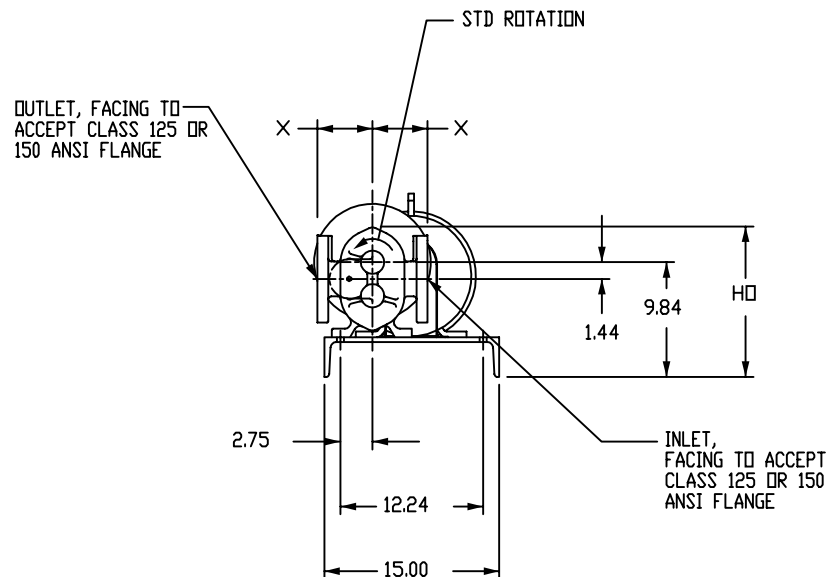
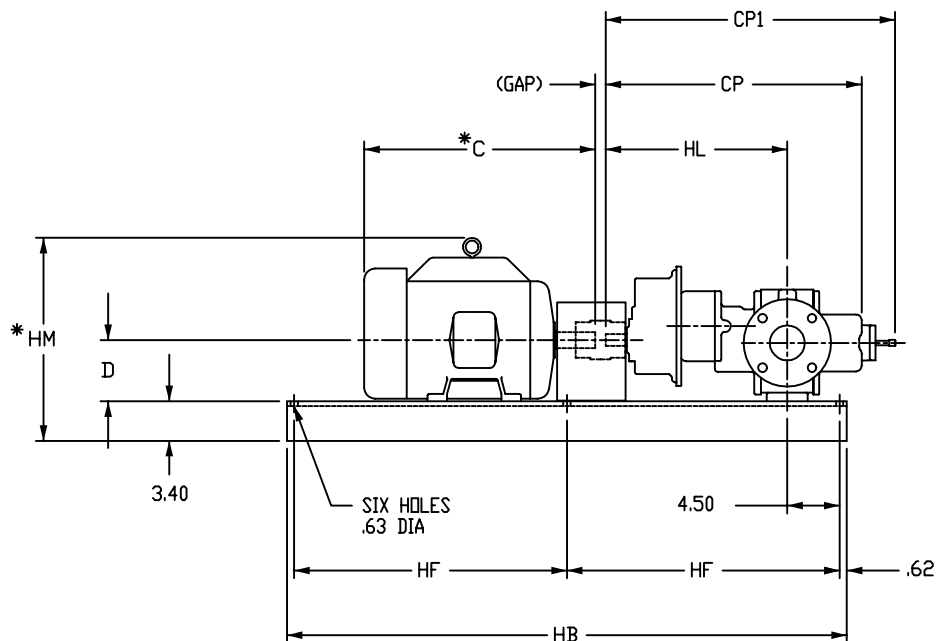


DO NOT SCALE  
DIMS IN INCHES [MM]

N = SHAFT END TO BRG CAGE  
V = FREE SHAFT LENGTH

PUMP	A	B	CP	G	K	L	PORTS	QTY	CIRCLE	T	X
Z11PX4A0G	6.88	3.00	20.47	.62	24.07	14.83	2.0	FOUR	4.75	.75	4.30
Z11RX4A0G	[175]	[76]	[596]	[16]	[611]	[377]	[51]		[121]	[19]	[109]
Z17PX4A0G	6.88	3.50	21.97	.75	25.57	15.58	3.0	FOUR	6.00	.94	4.30
Z17RX4A0G	[175]	[89]	[558]		[649]	[396]	[76]		[152]		[109]
Z22PX4A0G	7.00	3.62	23.47	[19]	27.07	16.33	4.0	EIGHT	7.50	[24]	6.41
Z22RX4A0G	[178]	[92]	[596]		[688]	[415]	[102]		[191]		[163]

Z11-Z22XX4ADM TYPE 1



		APPROXIMATE PUMP WEIGHT						
✓ PUMP	PORT SIZE	X	HD	CP	CP1	HL	PLAIN	W/RV
Z11XX4ADG	2" ANSI FLG	4.73	12.84	20.47	24.07	14.83	115	119
Z17XX4ADG	3" ANSI FLG	4.73	12.84	21.97	25.57	15.58	131	135
Z22XX4ADG	4" ANSI FLG	5.53	12.90	23.47	27.07	16.33	157	161

		BASE/COUPLING/HARDWARE WEIGHT								
✓ MOTOR FRAME	*MOTOR WEIGHT	11	17	22	*C	D	*HM	HB	HF	(GAP)
143T	54	118	118	118	12.56	3.50	10.88	40	19.38	.50
145T	65				12.82					
182T	97	119	119	119	16.56	4.50	14.65	48	23.38	.88
184T	110				18.06					
213T	162	144	144	144	18.56	5.25	16.40	48	23.38	.88
215T	189				21.09					
254T	283	N/A	145	145	23.19	6.25	17.59	48	23.38	1.0
256T	290				23.19					

✓ = UNIT SELECTED

DIMENSIONS IN INCHES  
WEIGHTS IN POUNDS

\* DIMENSIONS AND MOTOR WEIGHTS WILL VARY BASED ON MOTOR MANUFACTURER AND TYPE. CHART DIMENSIONS AND MOTOR WEIGHTS BASED ON TEFC 3 PHASE MOTORS.

RV = RELIEF VALVE

LOVEJOY COUPLINGS STANDARD



ROPER PUMP COMPANY  
P.O. BOX 269  
3475 OLD MAYSVILLE RD  
COMMERCE, GEORGIA 30529 U.S.A.

TELEPHONE: (706) 335-5551  
TELEFAX: (706) 335-5505

DATE: \_\_\_\_\_

PUMP NO.: \_\_\_\_\_

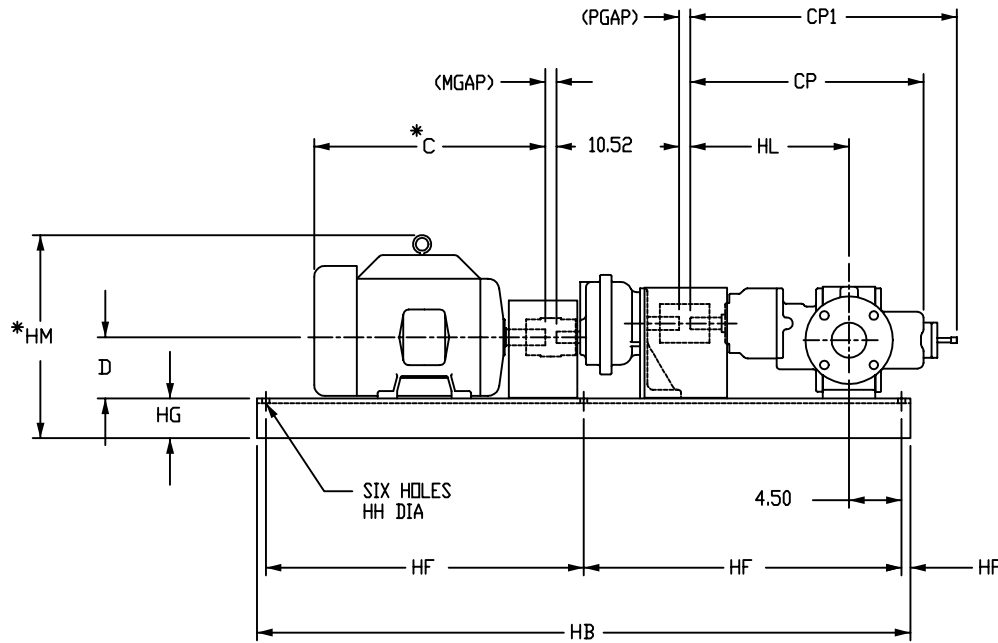
ROPER NO.: \_\_\_\_\_

CUSTOMER: \_\_\_\_\_

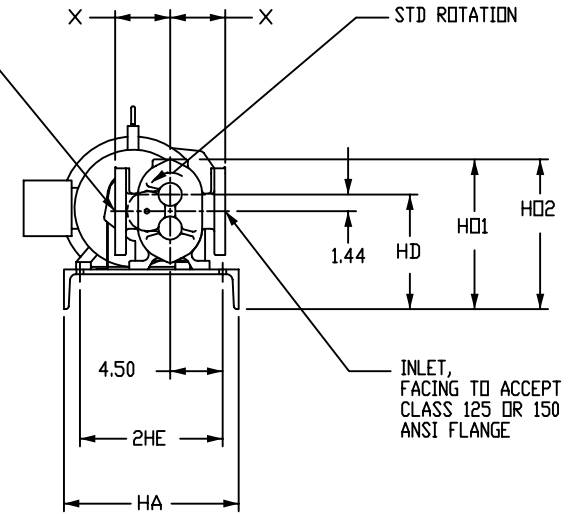
CUSTOMER NO.: \_\_\_\_\_

SERVICE: \_\_\_\_\_

Z11-Z22XX4ABM TYPE 1  
(WITH ROPER FIGURE 4125 GEAR REDUCER)



OUTLET, FACING TO  
ACCEPT CLASS 125 OR  
150 ANSI FLANGE



✓ PUMP	PORT SIZE	X	CP	CP1	HL	APPROXIMATE PUMP WEIGHT		143T-184T	213T-256T
						PLAIN	W/RV	MOTOR	MOTOR
Z11XX4ABH	2" ANSI FLG	4.73	19.32	22.92	13.69	75	79	HO1	HO2
Z17XX4ABH	3" ANSI FLG	4.73	20.07	23.67	13.69	91	95	12.84	13.39
Z22XX4ABH	4" ANSI FLG	5.53	21.57	25.17	14.44	117	121	12.90	13.45

✓ = UNIT SELECTED  
DIMENSIONS IN INCHES  
WEIGHTS IN POUNDS

\*DIMENSIONS AND MOTOR WEIGHTS WILL VARY BASED ON MOTOR MANUFACTURER AND TYPE. CHART DIMENSIONS AND MOTOR WEIGHTS BASED ON TEFC 3 PHASE MOTORS.

RV = RELIEF VALVE  
FIGURE 4125 GEAR REDUCER WEIGHT - 55

LOVEJOY COUPLINGS STANDARD

✓ MOTOR FRAME	*MOTOR WEIGHT	BASE/COUPLING/HARDWARE WEIGHT			*C	D	*HM	HA	HB	HD	2HE	HF	HG	HH	HP	(PGAP)	(MGAP)
		11	17	22													
143T	54	150	150	150	12.56	3.50	10.88	15	48	9.84	12.24	23.38	3.4	.63	.62	.50	.50
145T	65				12.82											.75	
182T	97	154	154	154	16.56	4.50	14.65	18	56	10.39	15	27.25	3.95	.88	.75	.88	.88
184T	110				18.06											.88	
213T	162	219	219	219	18.56	5.25	16.94	18	56	10.39	15	27.25	3.95	.88	.75	.88	.88
215T	189				21.09											.88	
254T	283	223	223	223	23.19	6.25	18.13	18	56	10.39	15	27.25	3.95	.88	.75	1.0	1.0
256T	290				23.19											1.0	



ROPER PUMP COMPANY  
P.O. BOX 269  
3475 OLD MAYSVILLE RD  
COMMERCE, GEORGIA 30529 U.S.A.

TELEPHONE: (706) 335-5551  
TELEFAX: (706) 335-5505

DATE: \_\_\_\_\_

PUMP NO.: \_\_\_\_\_

ROPER NO.: \_\_\_\_\_

CUSTOMER: \_\_\_\_\_

CUSTOMER NO.: \_\_\_\_\_

SERVICE: \_\_\_\_\_