

**DED-I-CA-TION**

Pronunciation:

“de-di-’kA-shun”

Function:

pumping

See also:

Roper

**9622**

**Series**

# Stainless Steel Service



The leading force behind liquids.

### Applications

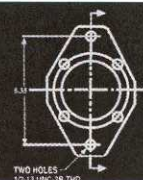
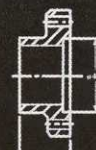
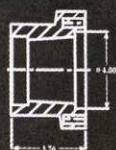
- Serves the chemical and transport markets
- Handles a wide range of viscosity
- High capacity and very compact
- Handles a variety of corrosive liquids
- Uses only one mechanical seal

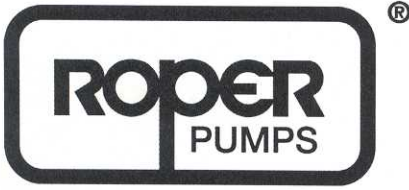
### Features

- Stainless Steel construction for long life
- Easy assembly/disassembly of pump
- Adjustable relief valve
- Pressures up to 100 psi
- Flows up to 165 GPM

### Options

- Multiple sealing options
- Packing/ mechanical seal conversions easily done in field.
- Hydraulic drive option





**Roper Pump Company**  
 P.O. Box 269 • Commerce, GA 30529  
 Toll Free: 1-800-876-9160 • Fax: 706-335-5490  
 e-mail: sales@roperpumps.com  
**Visit Us On The WorldWide Web**  
 www.roperpumps.com

## 9622 Series

Pump Model	Theoretical Capacity	Maximum Speed	Maximum Flow at Maximum Speed (0 Discharge Pressure)	Maximum Pressure	Port Connection
9622 / 9722	0.220GPR (832.8 CC/REV)	750RPM	165.0GPM (37.5 M /HR)	100 PSI (7 Bar)	3" NPT

## Materials of Construction

Housing	Gears	Bearings	Shaft	Case Gaskets
316 SST	17-4 PH-SST	Carbon	17-4PH-SST	PTFE

## Key Features

- Cost effective
- SST construction
- Easy assembly / disassembly
- Optional hydraulic motor drive arrangement
- Seal conversions done easily in field
- Relief valve assembly is easily removable for cleaning

