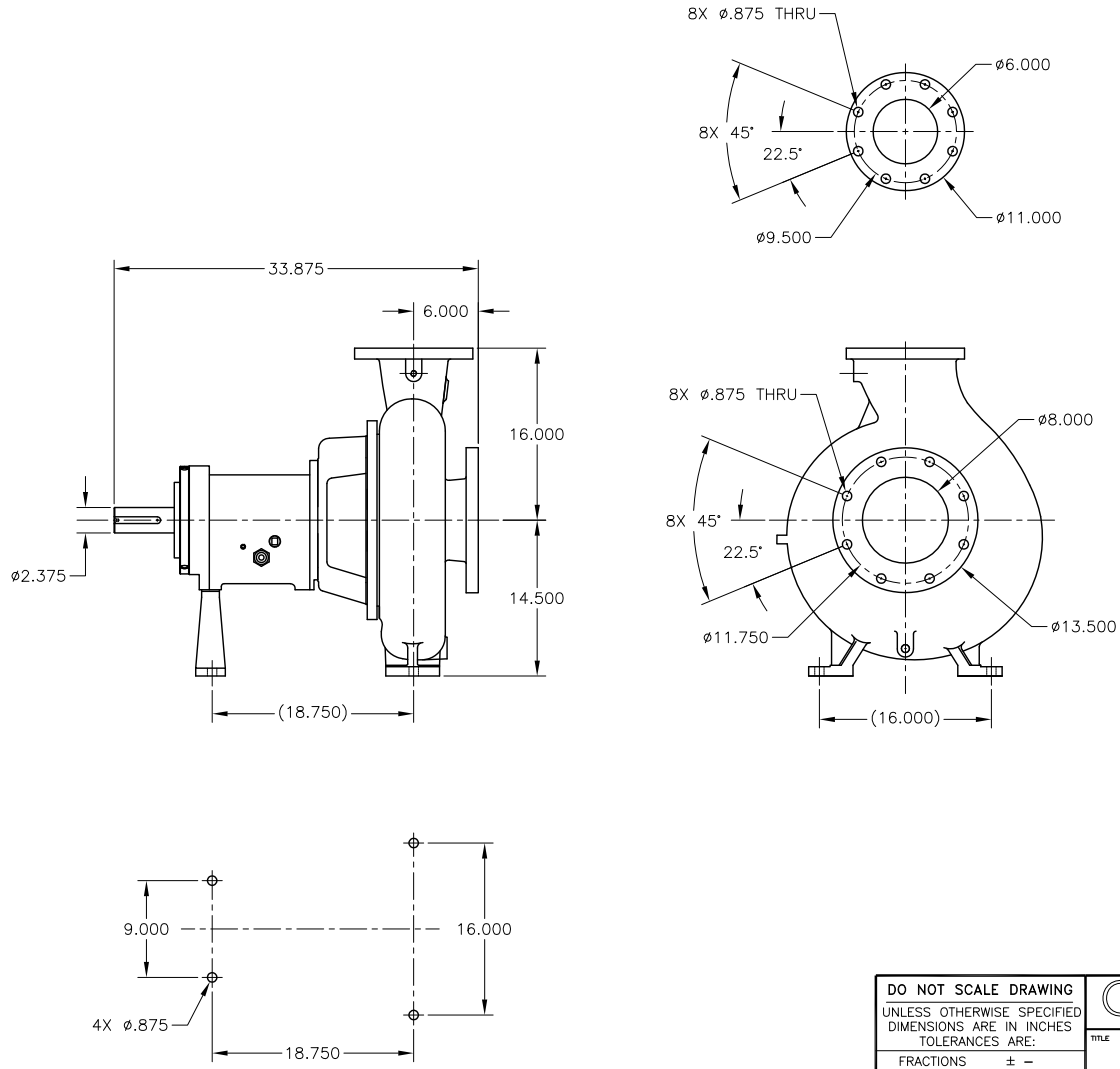


CAD generated and maintained drawing. All printed and electronic copies outside of Griswold's engineering database are "Uncontrolled" and shall be used for reference only.

REV.	DESCRIPTION	BY	APP.	DATE
A	8 X 6 - 13 A90 ANSI ASSEMBLY	M.H.		

NOTES: UNLESS OTHERWISE SPECIFIED

1. DIMENSIONS AND TOLERANCES PER ANSI Y14.5M-1982.
2. * INDICATES DIMENSIONS AND/OR FEATURES MODIFIED ON CURRENT REVISION LEVEL.
- *3. THIS PUMP MAY HAVE TAPPED BOLT HOLES IN THE SUCTION FLANGE PER ANSI'S ALLOWANCE.



THIS DOCUMENT AND ITS CONTENTS ARE PROPRIETARY TO WILSON PUMP AND ENGINEERING CO. ANY REPRODUCTION, DISCLOSURE OR USE OF THIS DOCUMENT IS EXPRESSLY PROHIBITED EXCEPT AS OTHERWISE AGREED TO IN WRITING.

DO NOT SCALE DRAWING		GRISWOLD		GRISWOLD PUMP COMPANY	
UNLESS OTHERWISE SPECIFIED DIMENSIONS ARE IN INCHES		22000 VAN BUREN ST.		GRAND TERRACE, CA 92313	
TOLERANCES ARE:		PHONE: (800) 943-9223, FAX: (800) 752-2928		TITLE	
FRACTIONS ± -				ASSEMBLY, 8 X 6-13 A90 ANSI	
DECIMALS .XX ± -		DRAWN BY M. HIATT		DATE 04/22/10	
.XXX ± -		CHECKED BY		DATE	
ANGLES ± -		SCALE 1/1		SHEET 1 OF 1	
		APPROVED BY		DATE	
				ASSY. NO.	
				DRAWING NO.	
				8613A90	
				REV.	
				A	