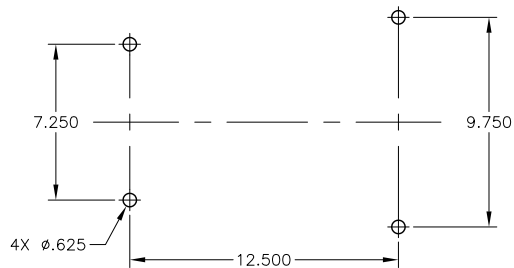
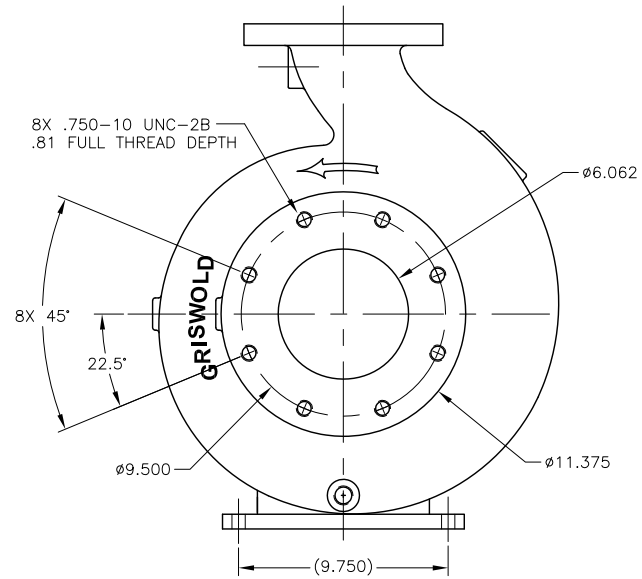
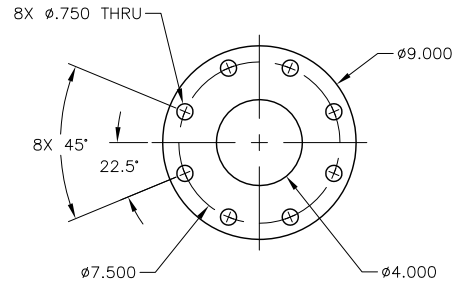
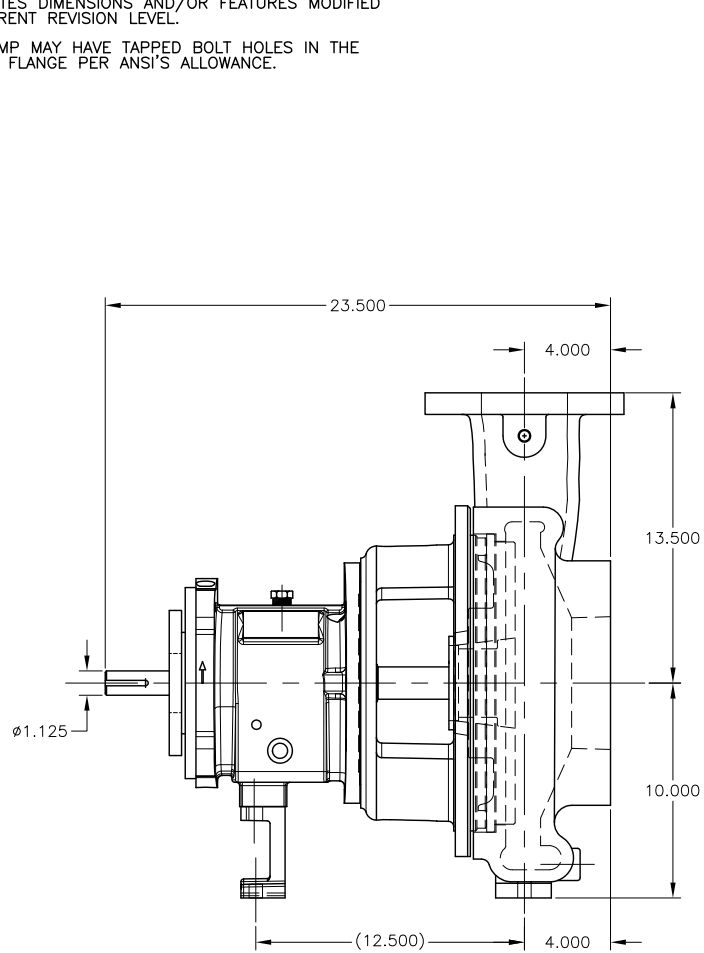


REV.	DESCRIPTION	BY	APP.	DATE
A	6 X 4 - 13 A80 ANSI ASSEMBLY	M.H.		

NOTES: UNLESS OTHERWISE SPECIFIED

1. DIMENSIONS AND TOLERANCES PER ANSI Y14.5M-1982.
2. \* INDICATES DIMENSIONS AND/OR FEATURES MODIFIED ON CURRENT REVISION LEVEL.
- \* 3. THIS PUMP MAY HAVE TAPPED BOLT HOLES IN THE SUCTION FLANGE PER ANSI'S ALLOWANCE.



THIS DOCUMENT AND ITS CONTENTS ARE PROPRIETARY TO WILSON PUMP AND ENGINEERING CO. ANY REPRODUCTION, DISCLOSURE OR USE OF THIS DOCUMENT IS EXPRESSLY PROHIBITED EXCEPT AS OTHERWISE AGREED TO IN WRITING.

DO NOT SCALE DRAWING	
UNLESS OTHERWISE SPECIFIED	
DIMENSIONS ARE IN INCHES	
TOLERANCES ARE:	
FRACTIONS	± -
DECIMALS .XX	± -
.XXX	± -
ANGLES	± -
SCALE	1/1
SHEET	1 OF 1



GRISWOLD PUMP COMPANY  
 22000 VAN BUREN ST.  
 GRAND TERRACE, CA 92313  
 PHONE: (800) 843-9223, FAX: (800) 752-2928

TITLE		ASSEMBLY, 6 X 4 - 13 A80 ANSI	
DRAWN BY	M. HIATT	DATE	04/22/10
CHECKED BY		DATE	
APPROVED BY		DATE	
ASSY. NO.		DRAWING NO.	6413A80
REV.			A