

NDP-40 Specifications

Port Dimensions

Intake & discharge connection:

Polypropylene (PPG)	1-1/2" ANSI Flange B16.5 #150
Kynar (PVDF)	1-1/2" ANSI Flange B16.5 #150
Aluminum (ADC-12)	1-1/2" ANSI Flange B16.5 #150 (with tapped 1-1/2" Female NPT)
Stainless Steel (316) or Hastelloy	1-1/2" ANSI Flange B16.5 #150 or 1-1/2" Female NPT
Cast Iron	1-1/2" Female NPT
Air inlet (incl. ball valve):	1/2" Female NPT
Air exhaust (incl. silencer):	1" Female NPT

Maximum Liquid Temperature*

Diaphragm Material	Temperature
Neoprene	180°F (82°C)
Buna N	180°F (82°C)
EPDM	212°F (100°C)
Hytrel	248°F (120°C)
Santoprene	212°F (100°C)
Viton	248°F (120°C)
Teflon (PTFE)	212°F (100°C)

*Polypropylene pumps have a maximum liquid temperature of 180°F (82°C) regardless of diaphragm material. Kynar pumps have a maximum temperature of 248°F (120°C) when fitted with Hytrel or Viton diaphragms.

Air Supply Pressure (All Models)

20–100 PSI (1.4–7 kfg/cm)

Discharge Volume Per Cycle

Rubber diaphragm: 0.79 gallons (3.0 liters)
PTFE diaphragm: 0.37 gallons (1.4 liters)

Maximum Cycles Per Minute

Rubber diaphragm: 148
PTFE diaphragm: 270

Maximum Size Solid

9/32" (7 mm)

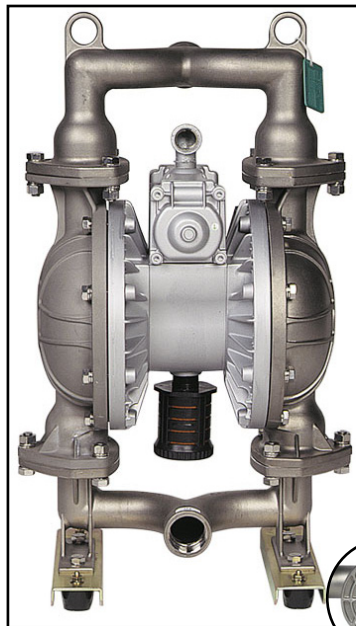
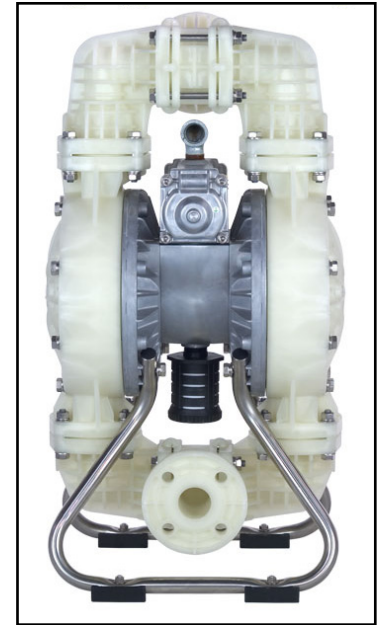
Maximum Dry Suction Lift

Rubber-fitted pump capability: 18-feet

Aluminum Air Motor – Standard

Optional: Epoxy-coated, Teflon-coated, or Electroless Nickel Plate

All Polypropylene, Aluminum, Cast Iron, Hastelloy, and SS Hytrel fitted pumps include Buna N check balls & o-rings and Santoprene fitted pumps include EPDM check balls & wetted o-rings. Kynar (PVDF) pumps fitted with Santoprene, Hytrel, or Teflon include Teflon check balls & o-rings. Kynar/EPDM fitted pumps include EPDM check balls & o-rings and Viton fitted include Viton balls & o-rings.



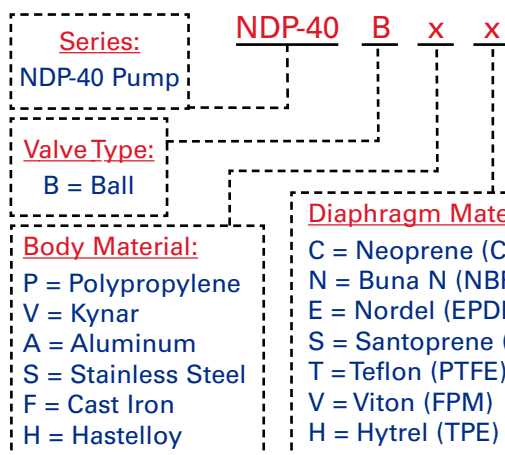
Aluminum (top left)
Dimensions: 16.18" W x 27.91" H
Net Wt.: 68 lbs. (28.9 kg)
Shipping Wt.: 75 lbs.

Polypropylene or Kynar (top right)
Dimensions: 15.75" W x 29.61" H
Net Wt.: 70 lbs. (29.9 kg)
Shipping Wt.: 78 lbs.

Cast Iron, Hastelloy, or Stainless Steel (left)
Dimensions: 16.18" W x 27.75" H
Net Wt.: C. Iron: 112 lbs. (59.8 kg)
Hastelloy or SS: 98 lbs. (39.9 kg)
Ship Wt.: C. Iron: 120 lbs.
Hastelloy or SS: 106 lbs.

Note: ANSI Flange available for Hastelloy and Stainless Steel

Model Number Nomenclature

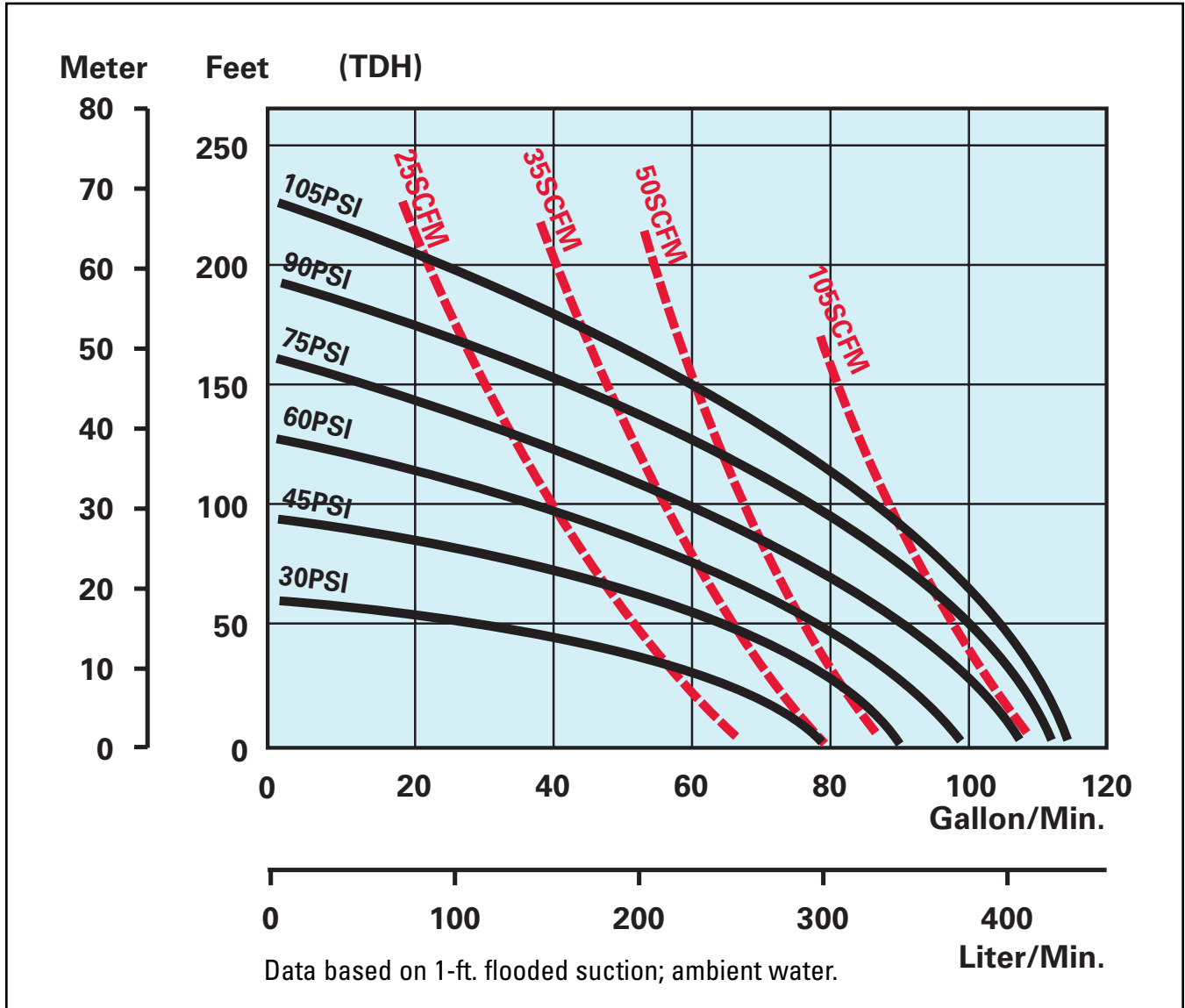


Note: For NPT-fitted SS or Hastelloy, add "NPT" at end of model number nomenclature.



NDP-40 Performance Curve — Rubber

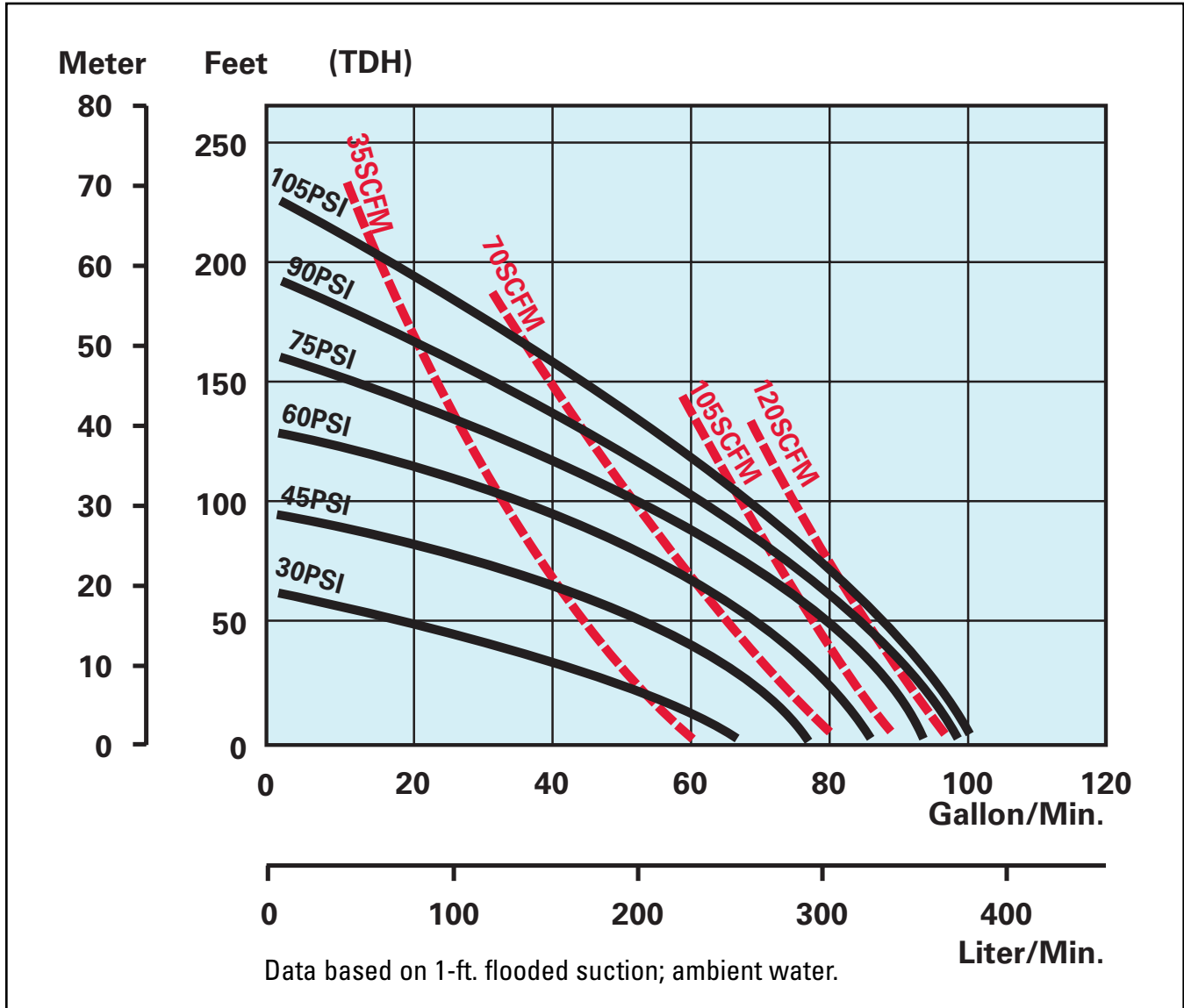
Rubber Diaphragm Performance Curve



To calculate performance for Santoprene and Hytrel-fitted pumps, use Rubber Diaphragm Curve.

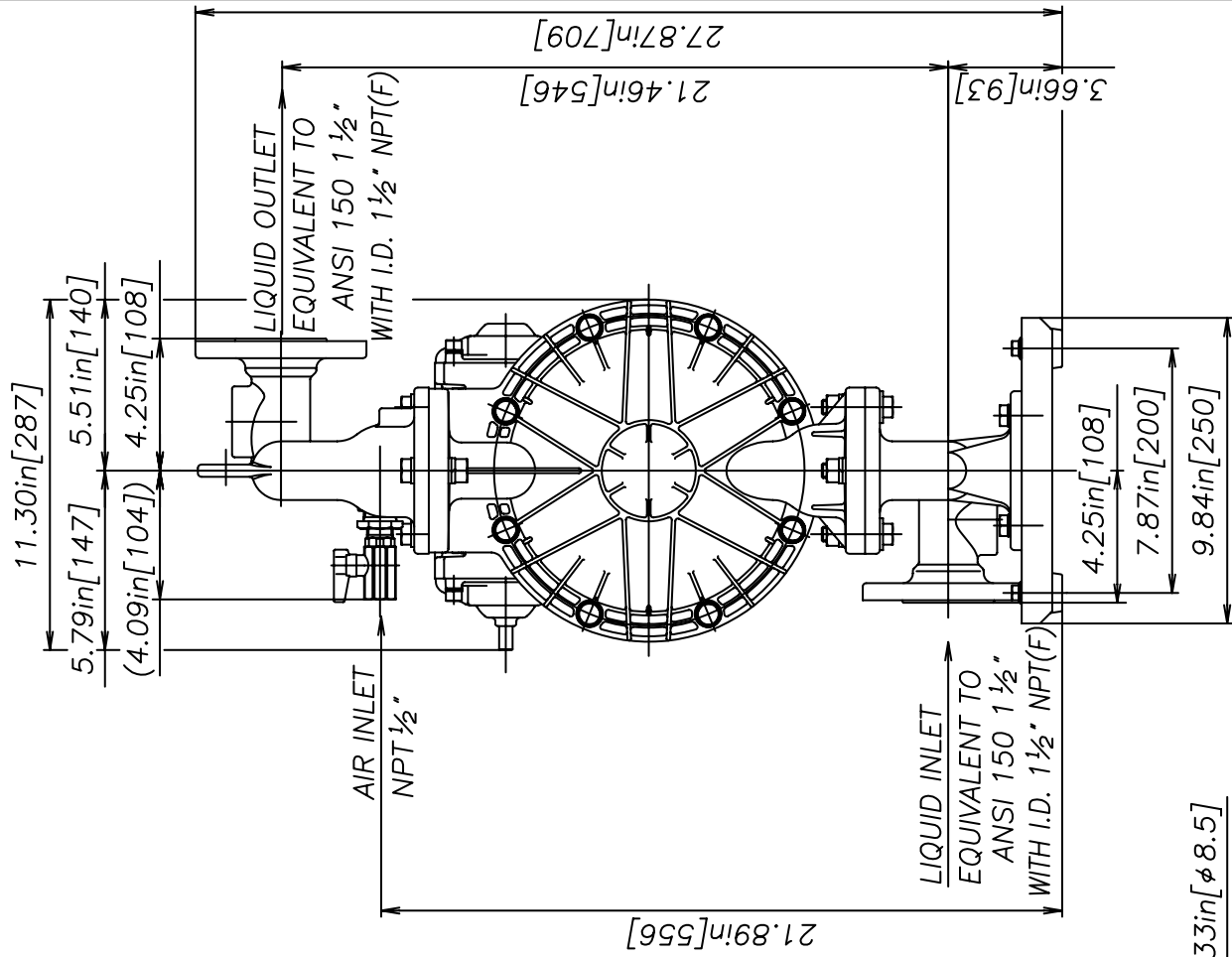
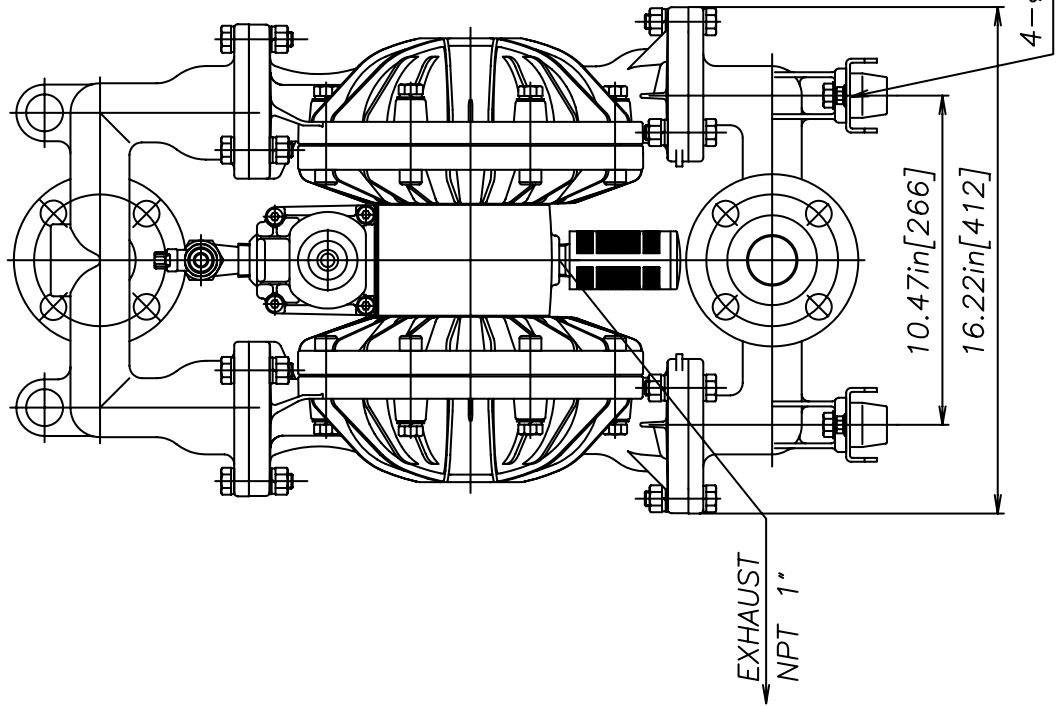
NDP-40 Performance Curve — PTFE

PTFE Diaphragm Performance Curve

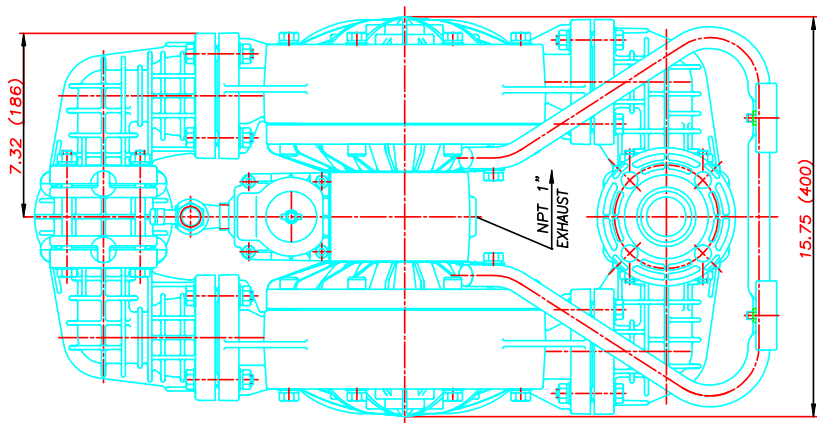
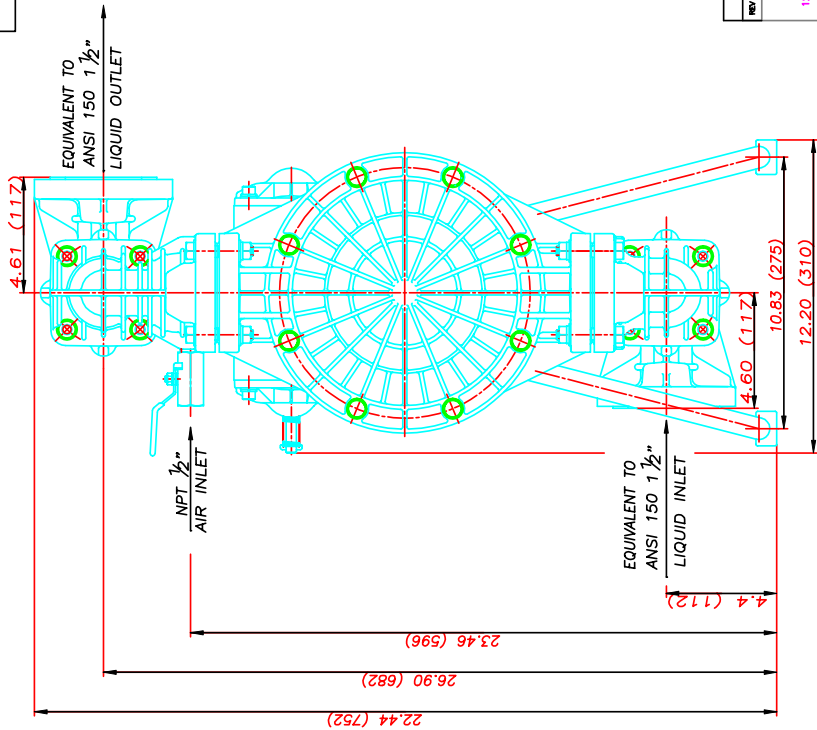


To calculate performance for Santoprene and Hytrel-fitted pumps, use Rubber Diaphragm Curve.

NDP-40BA(YA) 01.6.19



SYM	CHANGE NO.	DATE	APP'D BY	REV'D BY



NOTE:
ALL DIMENSIONS ARE IN INCHES (MM)

REV	DATE	DESCRIPTION	APP'D

YAMADA AMERICA, INC.
 1200 NUCLEAR DRIVE - WEST CHICAGO, ILLINOIS 60185
 TOLL FREE 800-990-7867 OR 630-231-4083

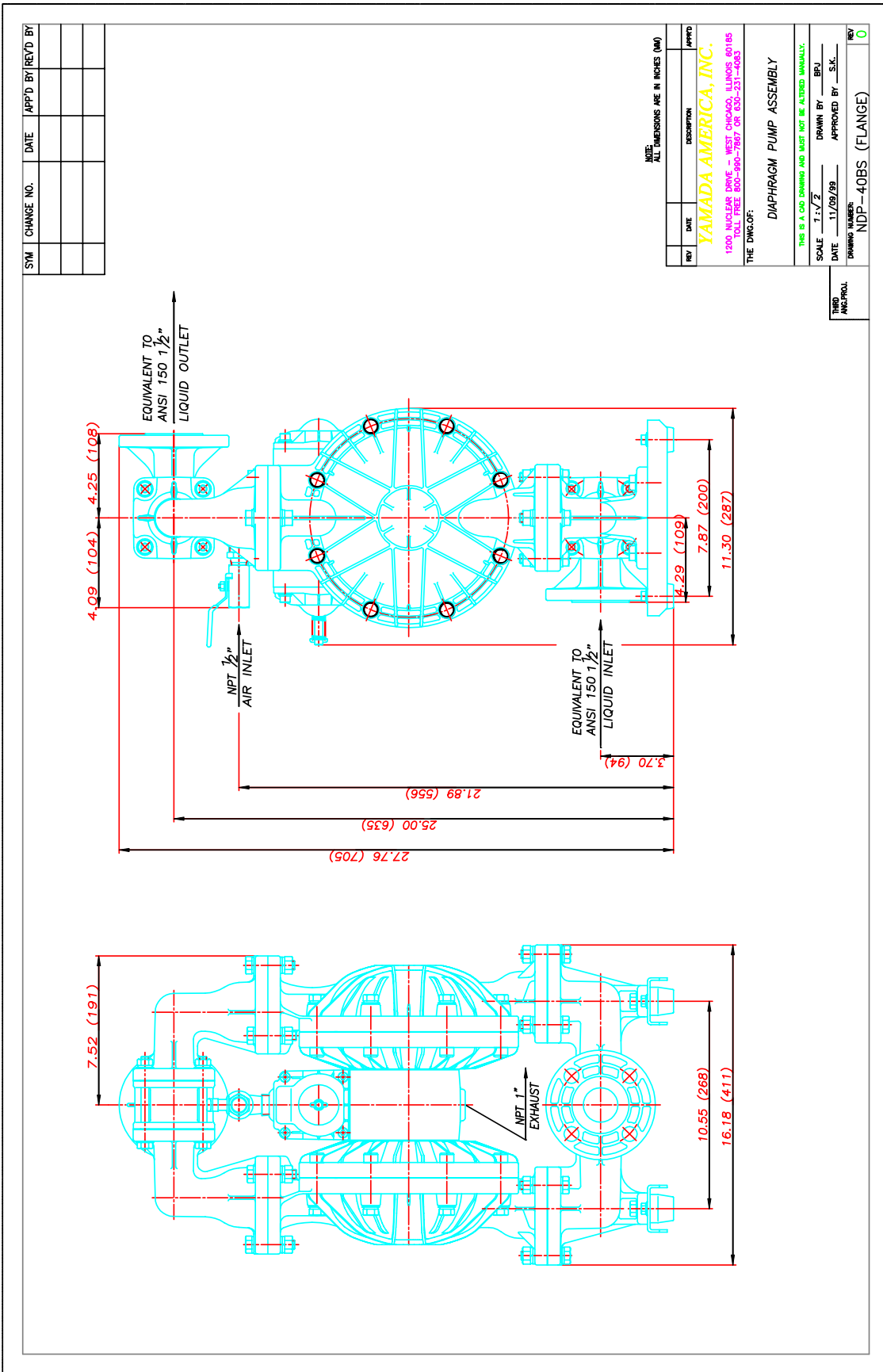
THE DWG. OF:
DIAPHRAGM PUMP ASSEMBLY

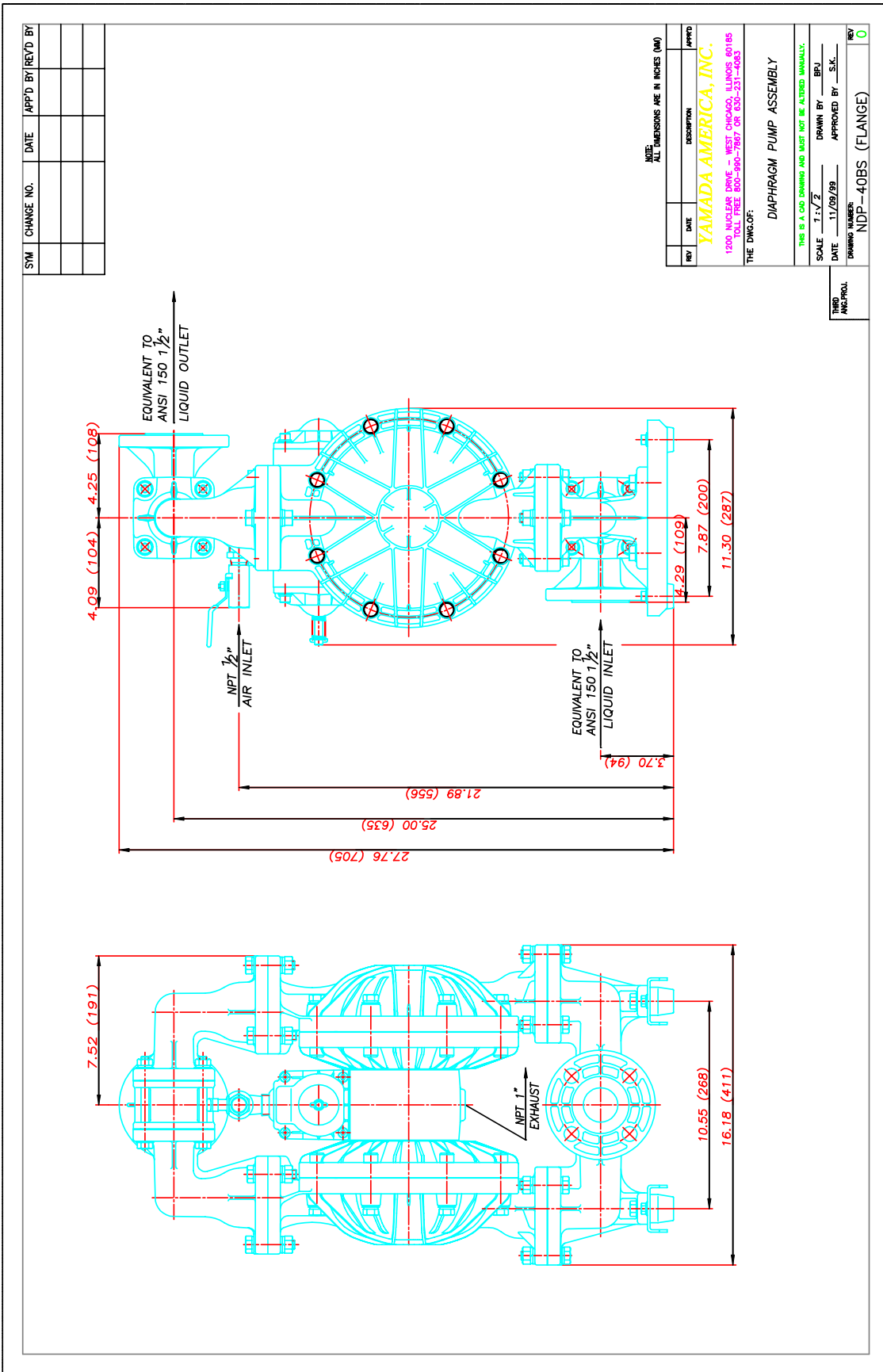
THIS IS A CAD DRAWING AND MUST NOT BE ALTERED MANUALLY.
 SCALE: 1:1
 DRAWN BY: BFL
 DATE: 11/09/99 APPROVED BY: S.K.
 DRAWING NUMBER: NDP-40BP

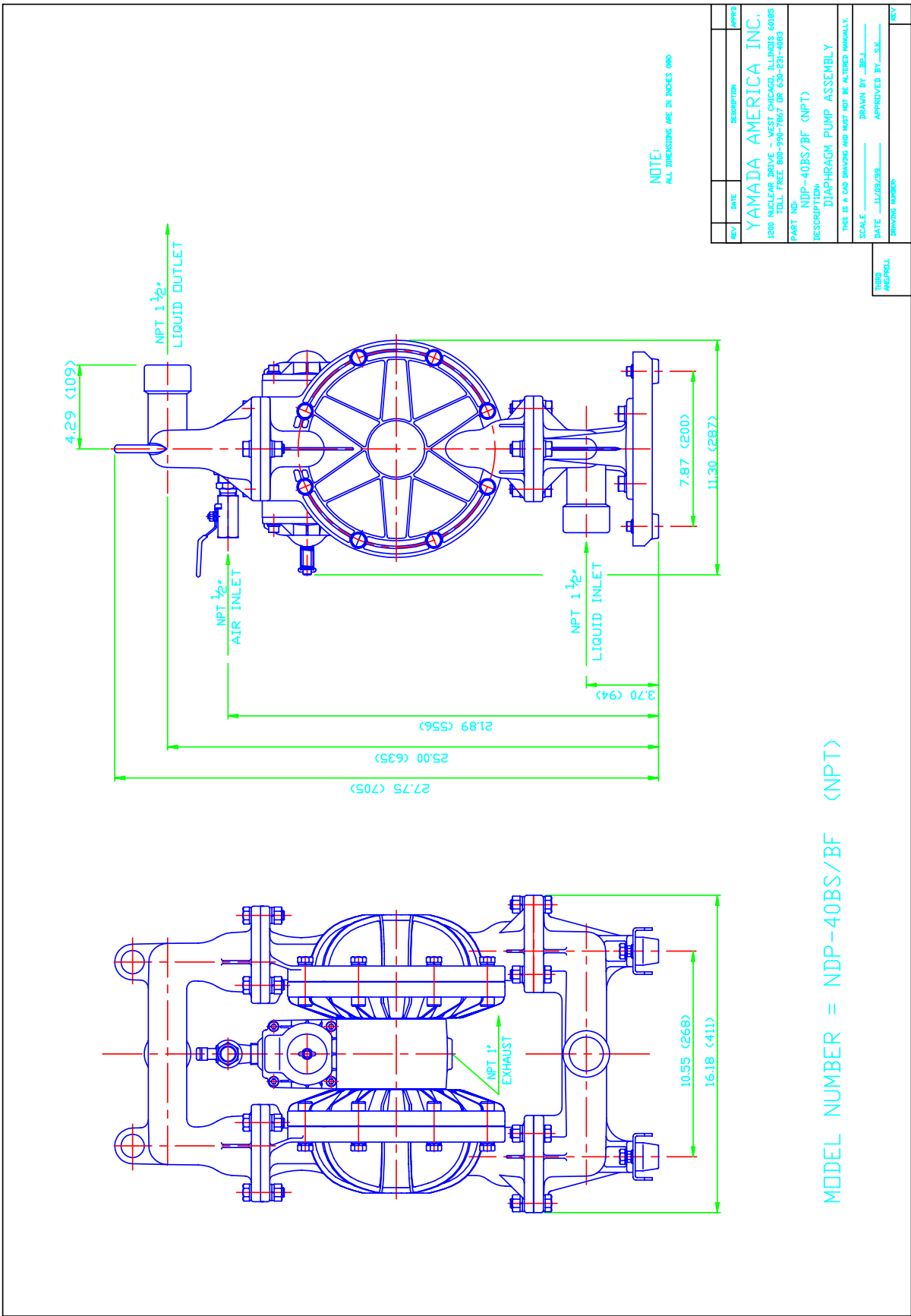
TWO ANG. PROJ.

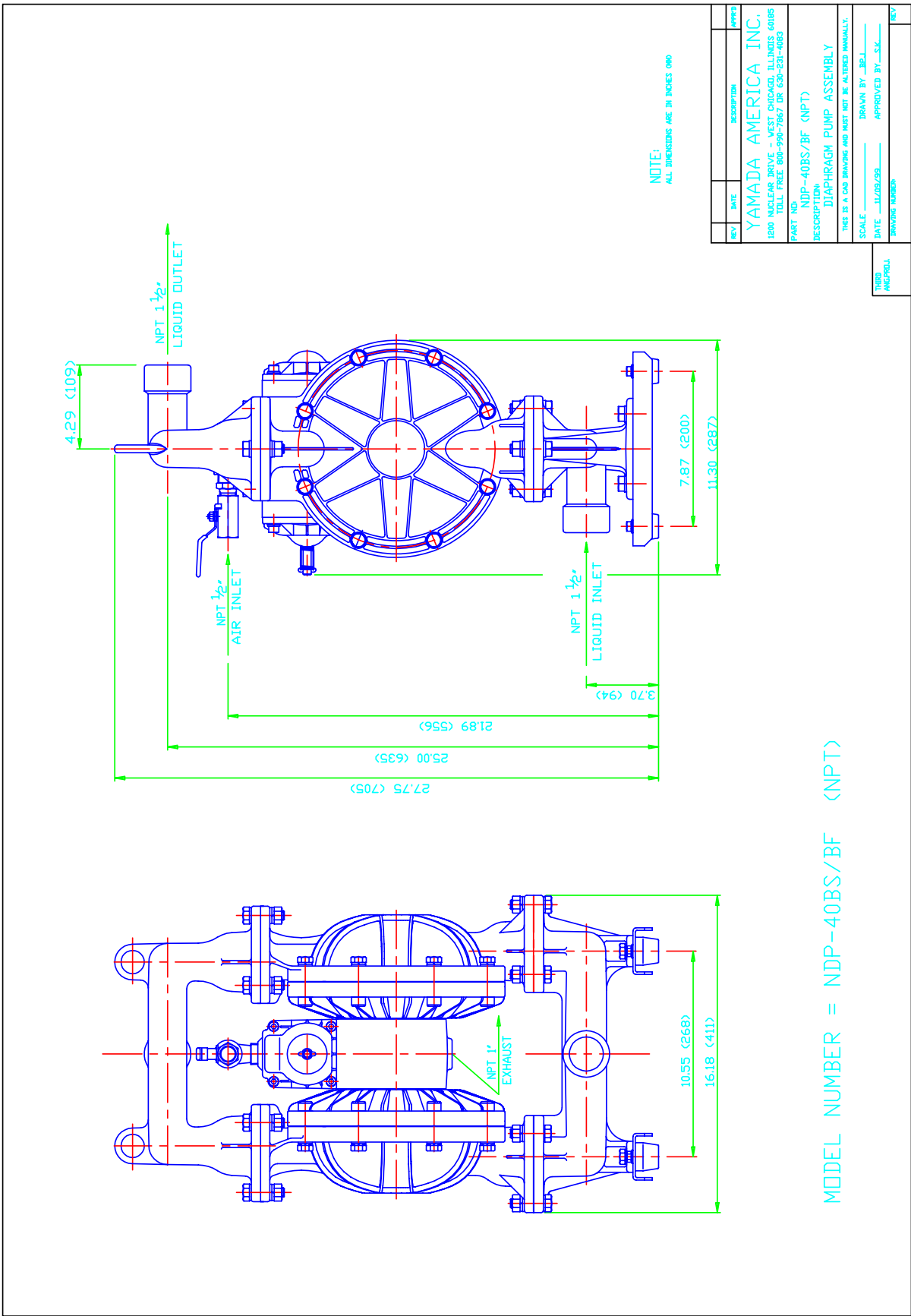
REV	

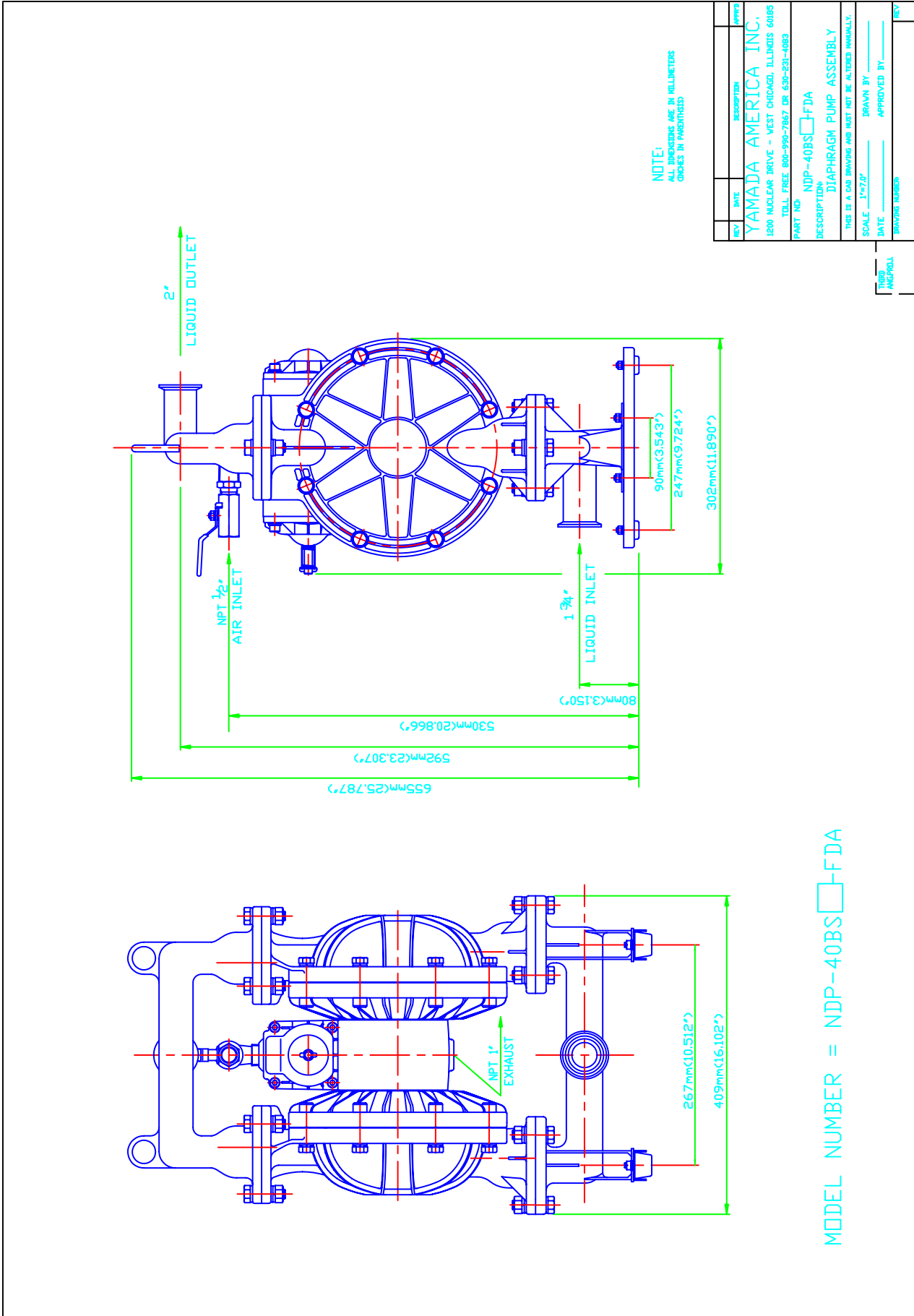












NOTE:
ALL DIMENSIONS ARE IN MILLIMETERS
INCHES IN PARENTHESES

REV	DATE	DESCRIPTION	APP'D
YAMADA AMERICA INC. 1800 NUCLEAR DRIVE - WEST CHICAGO, ILLINOIS 60185 TOLL FREE 800-990-7867 OR 630-231-4083			
PART NO. NDP-40BS <input type="checkbox"/> FDA DESCRIPTION: DIAPHRAGM PUMP ASSEMBLY			
THIS IS A CAD DRAWING AND MUST NOT BE ALTERED MANUALLY.			
SCALE: 1"=7.0"		DRAWN BY: _____	
DATE: _____		APPROVED BY: _____	
DRAWING NUMBER: _____		REV: _____	

FILED
PACIFIC

CAD DWG FILE: YAS97115

MODEL NUMBER = NDP-40BS FDA



Yamada America, Inc. 1200 Nuclear Drive, West Chicago, Illinois 60185
 USA Toll-Free: 800 990-7867 Phone: 630 231-4083 Fax: 630 231-7405
 E-mail: sales@yamadapump.com Web: yamadapump.com