

# NDP-25 Specifications

**1" Port Size (49 GPM Max. Capacity)**

## Port Dimensions

*Intake & discharge connection:*

Polypropylene (PPG)	1" Female NPT or 1" ANSI Flange B16.5 #150
Kynar® (PVDF)	1" Female NPT or 1" ANSI Flange B16.5 #150
Aluminum (ADC-12)	1" Female NPT
Stainless Steel (316)	1" Female NPT
Cast Iron	1" Female NPT
Air inlet (incl. ball valve):	3/8" Female NPT
Air exhaust (incl. silencer):	3/4" Female NPT

## Maximum Liquid Temperature\*

Diaphragm Material	Temperature
Neoprene	180°F (82°C)
Buna N	180°F (82°C)
EPDM	212°F (100°C)
Hytrel	248°F (120°C)
Santoprene	225°F (107°C)
Viton	248°F (120°C)
Teflon (PTFE)	212°F (100°C)

\*Polypropylene pumps have a maximum liquid temperature of 180°F (82°C) regardless of diaphragm material. Kynar pumps have a maximum temperature of 248°F (120°C) when fitted with Hytrel or Viton diaphragms.

## Air Supply Pressure (All Models)

20–100 PSI (1.4–7 kfg/cm)

## Discharge Volume Per Cycle

Rubber diaphragm: 0.23 gallons (862 cc)

PTFE diaphragm: 0.17 gallons (654 cc)

## Maximum Cycles Per Minute

Rubber diaphragm: 210

PTFE diaphragm: 210

**Maximum Size Solid:** 3/16" (4.8 mm)

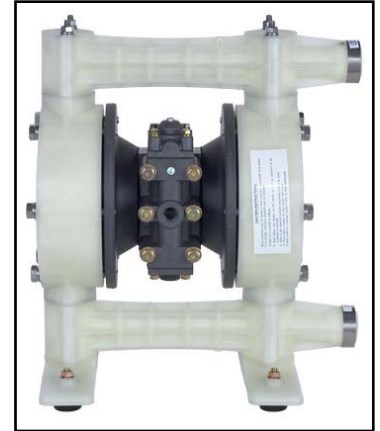
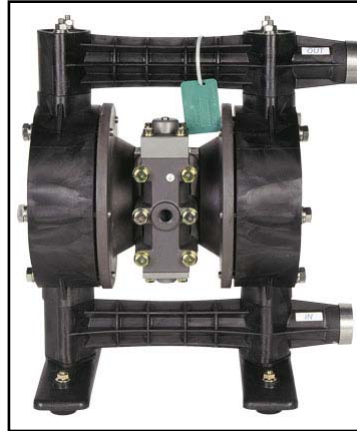
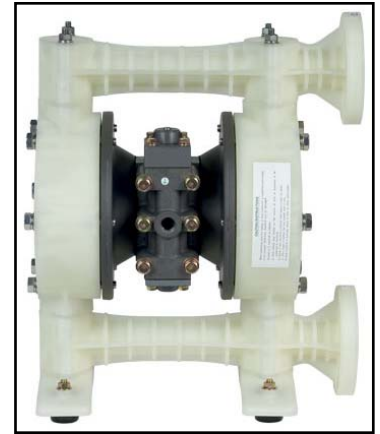
## Maximum Dry Suction Lift

Rubber-fitted pump capability: 18-feet

## Aluminum Air Motor – Standard

Optional: Epoxy-coated, Teflon-coated, or Electroless Nickel Plate

All Polypropylene, Aluminum, Cast Iron, and SS Hytrel fitted pumps include Buna N check balls & o-rings and Santoprene fitted pumps include EPDM check balls & wetted o-rings. Kynar (PVDF) pumps fitted with Santoprene, Hytrel, or Teflon include Teflon check balls & o-rings. Kynar/EPDM fitted pumps include EPDM check balls & o-rings and Viton fitted include Viton balls & o-rings.



## Aluminum

**Dimensions:** 11.30" W x 15.08" H

**Net Wt.:** 27 lbs. (13.0 kg)

**Shipping Wt.:** 31 lbs.

## Kynar (PVDF)

**ANSI Flange Dimensions:**

14.40" W x 17.40" H

**NPT Dimensions:**

14.40" W x 16.90" H

**Net Wt.:** 29.7 lbs. (13.4 kg)

**Shipping Wt.:** 33 lbs.

## Polypropylene

**ANSI Flange Dimensions:**

14.40" W x 17.40" H

**NPT Dimensions:**

14.40" W x 16.90" H

**Net Wt.:** 29 lbs. (10.9 kg)

**Shipping Wt.:** 30 lbs.

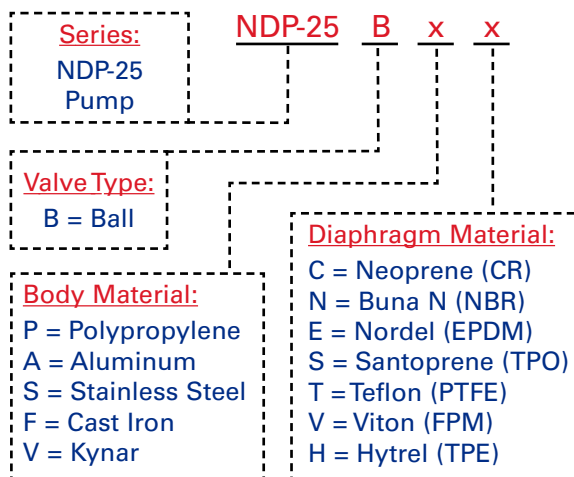
## Cast Iron or S.S.

**Dimensions:** 11.30" W x 15.08" H

**Net Wt.:** 43 lbs. (19.9 kg)

**Ship Wt.:** 46 lbs.

## Model Number Nomenclature



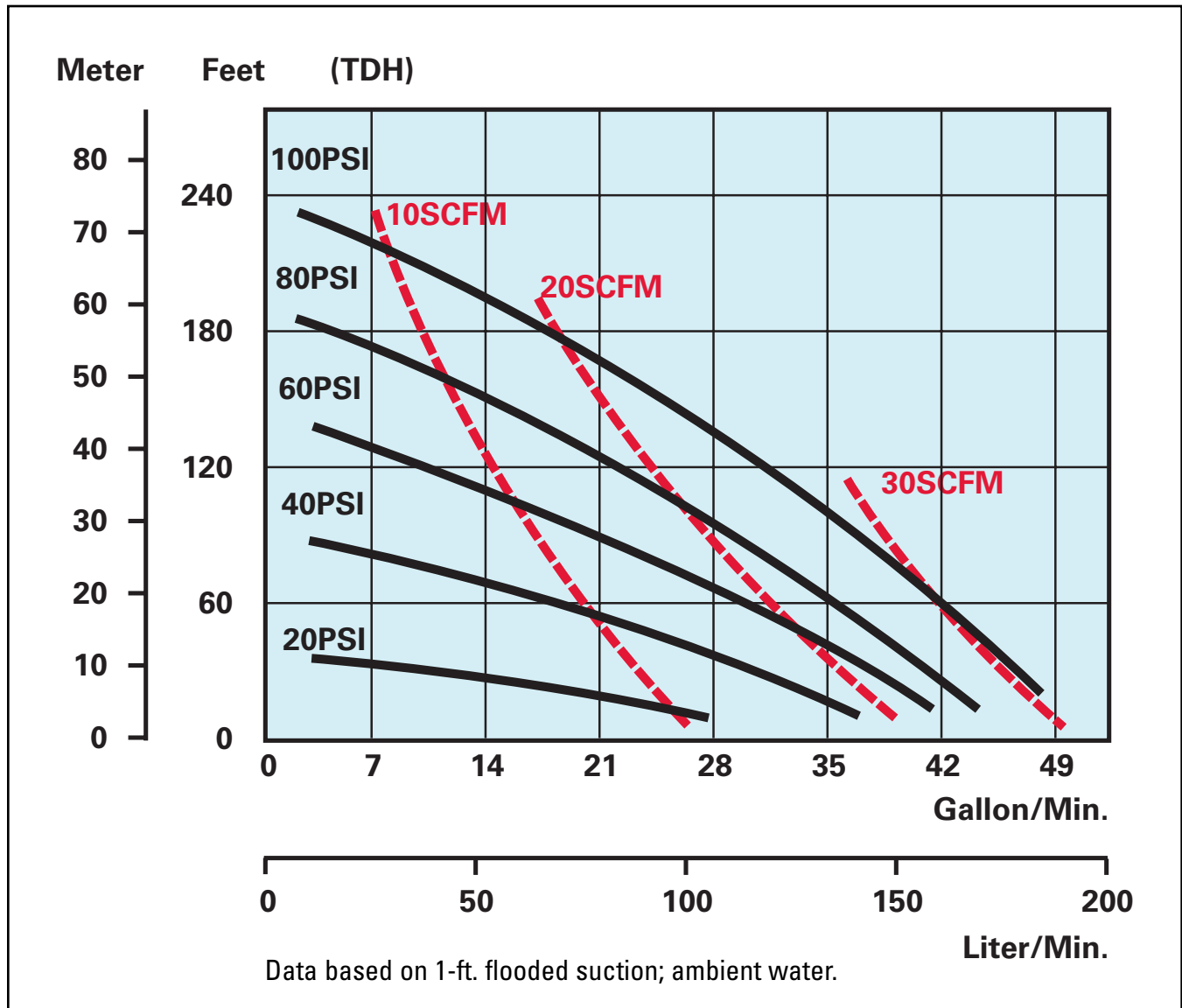
**Yamada America, Inc.** 1200 Nuclear Drive, West Chicago, Illinois 60185

USA Toll-Free: 800 990-7867 Phone: 630 231-4083 Fax: 630 231-7405

E-mail: sales@yamadapump.com Web: [yamadapump.com](http://yamadapump.com)

# NDP-25 Performance Curve — Rubber

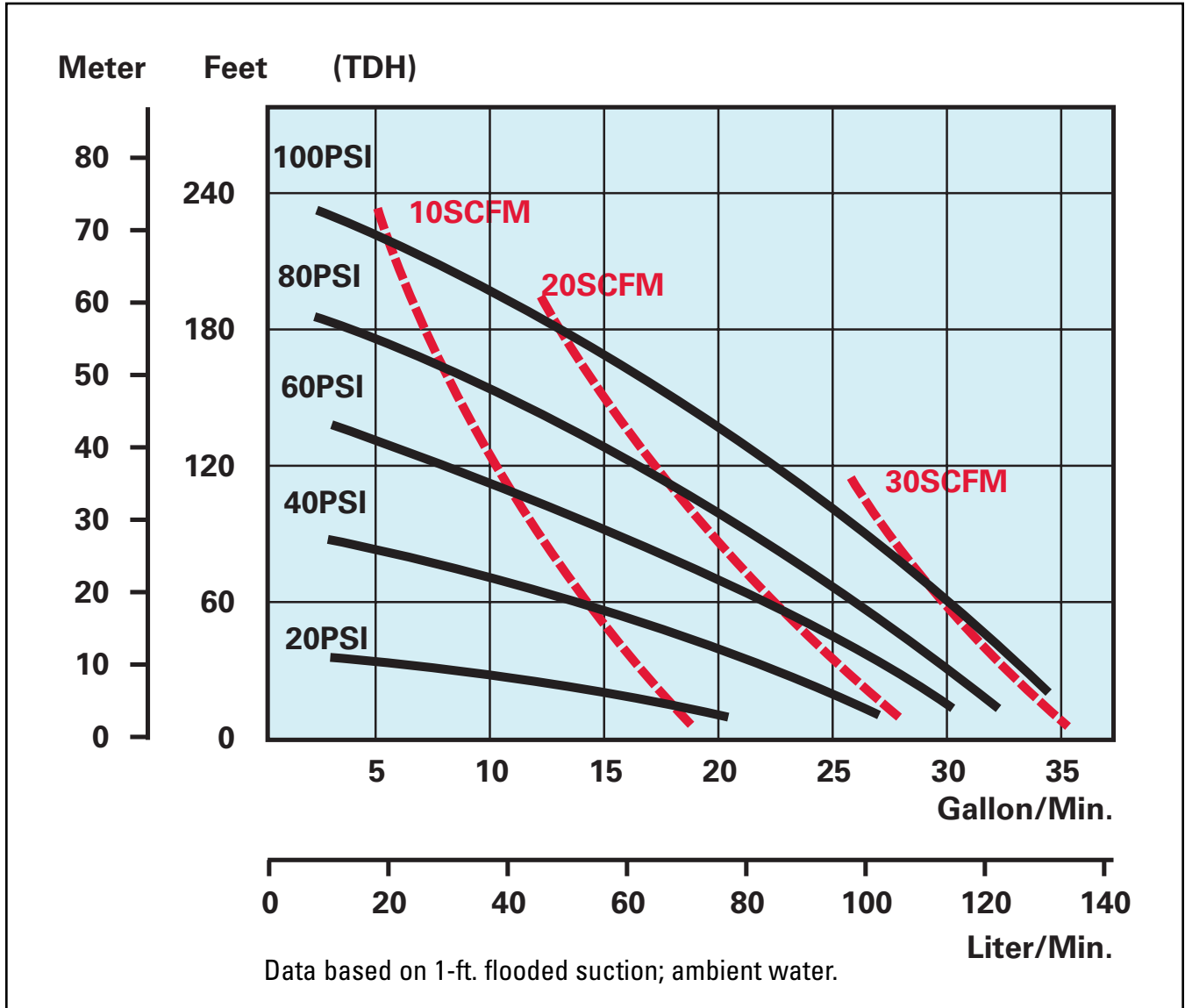
## Rubber Diaphragm Performance Curve



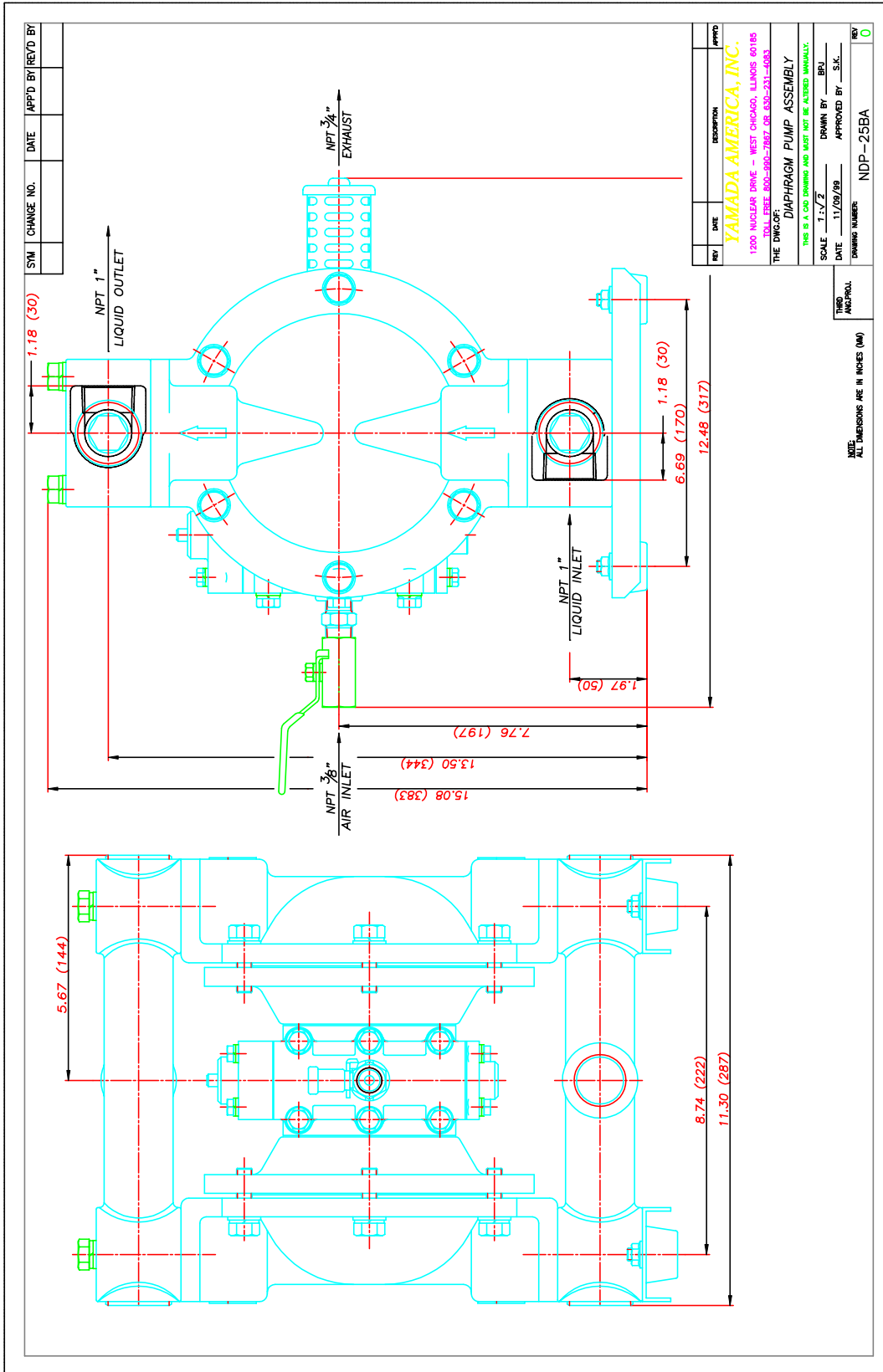
To calculate performance for Santoprene and Hytrel-fitted pumps, use Rubber Diaphragm Curve.

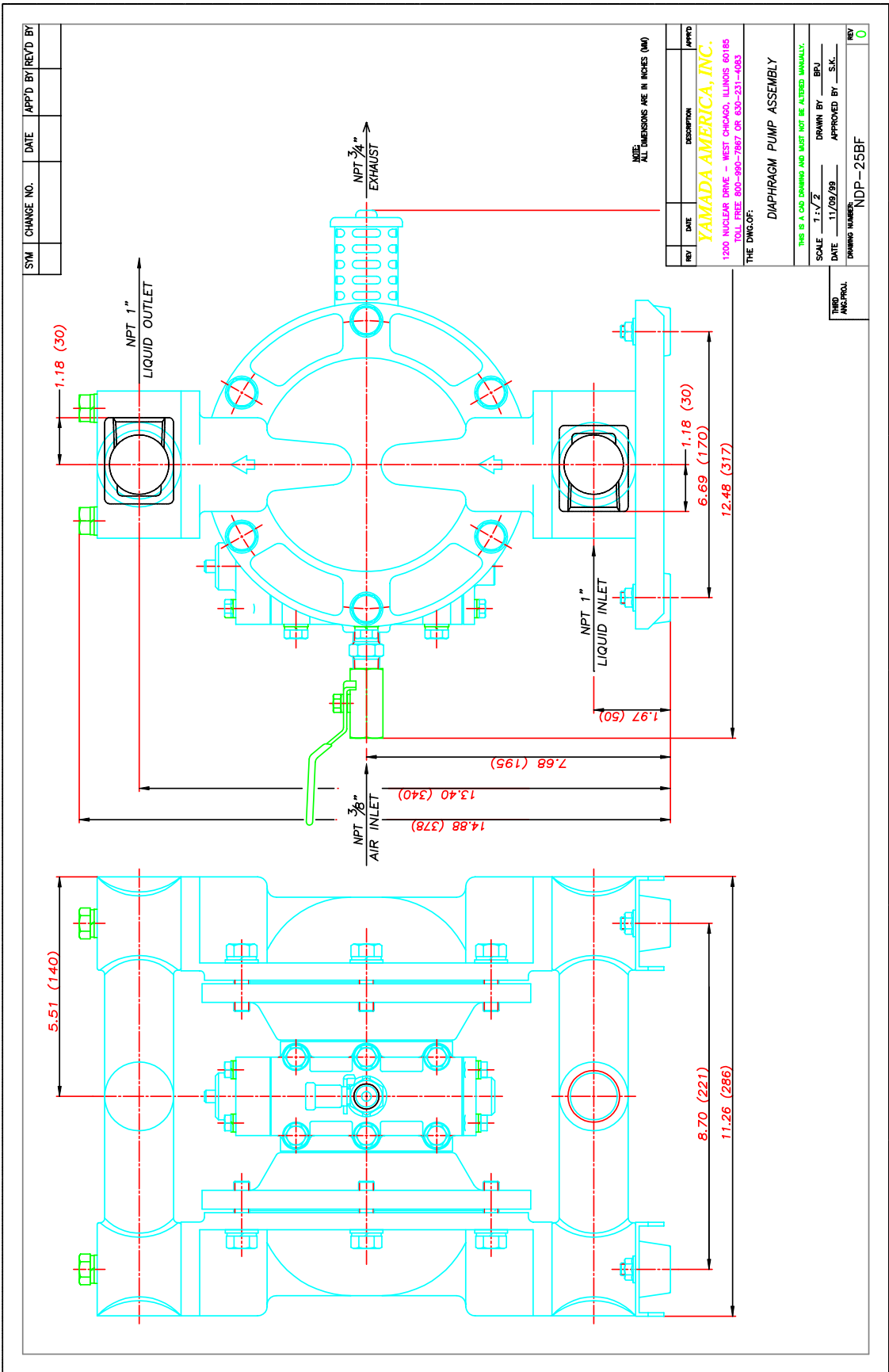
# NDP-25 Performance Curve — PTFE

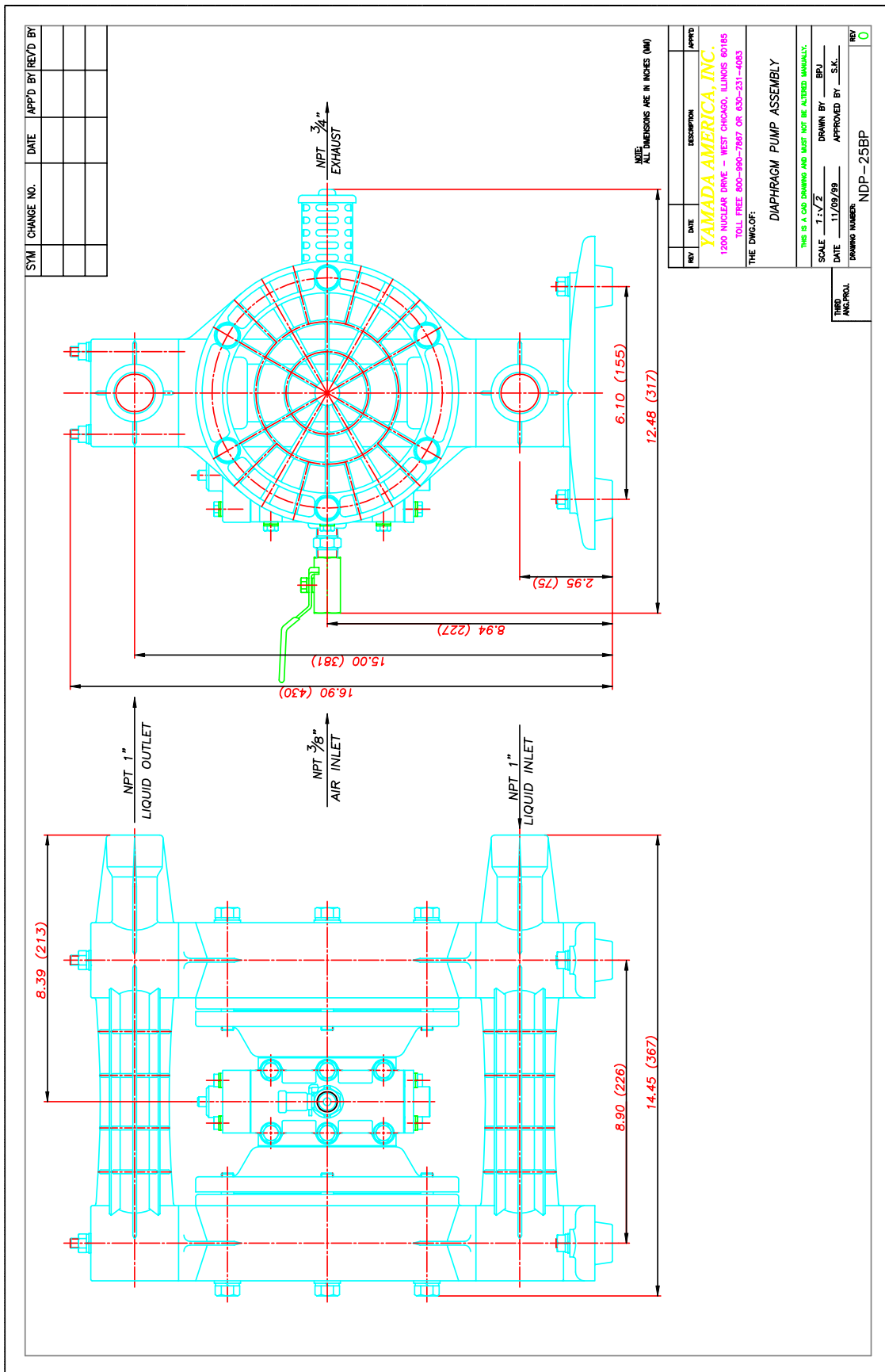
## PTFE Diaphragm Performance Curve

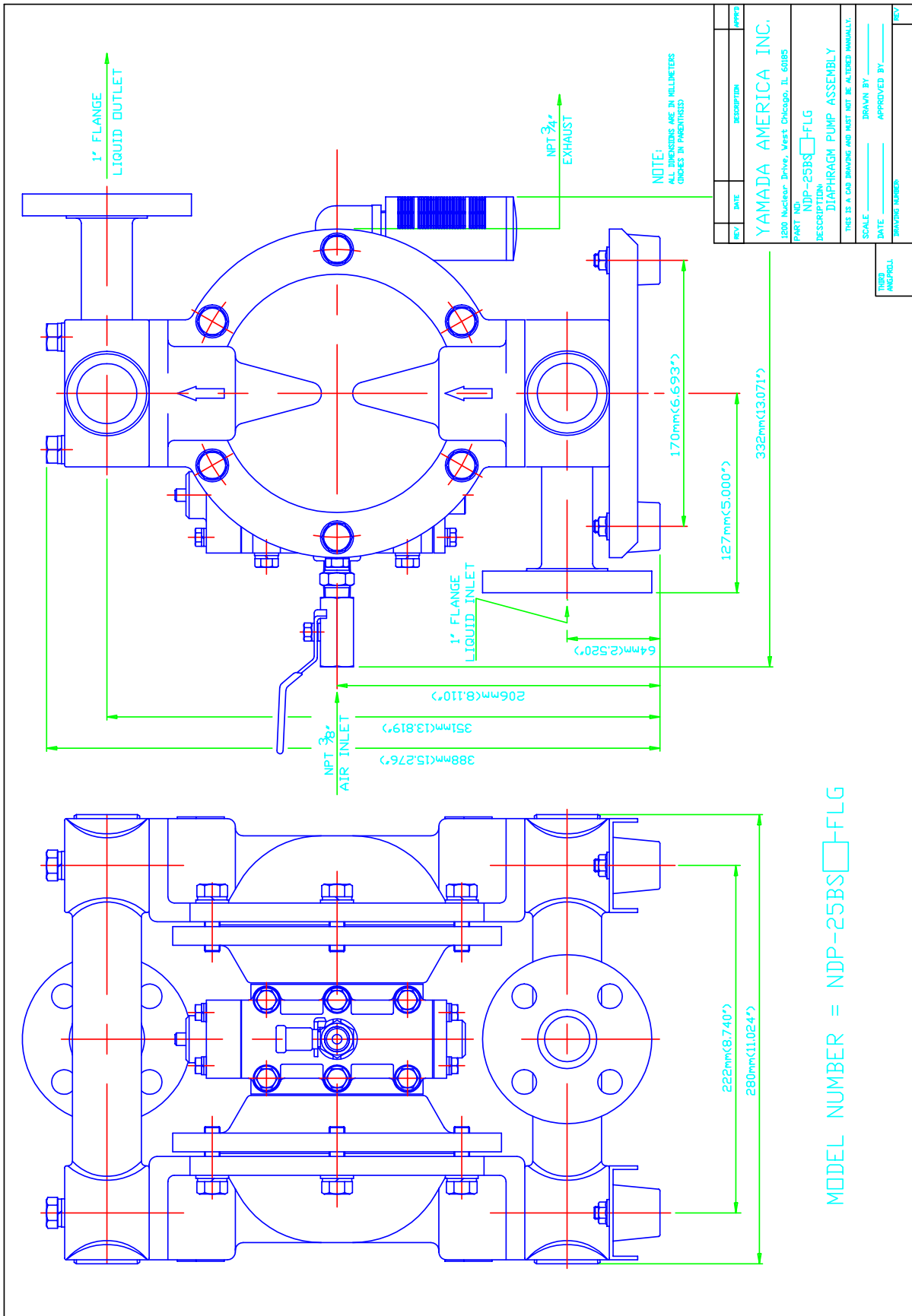


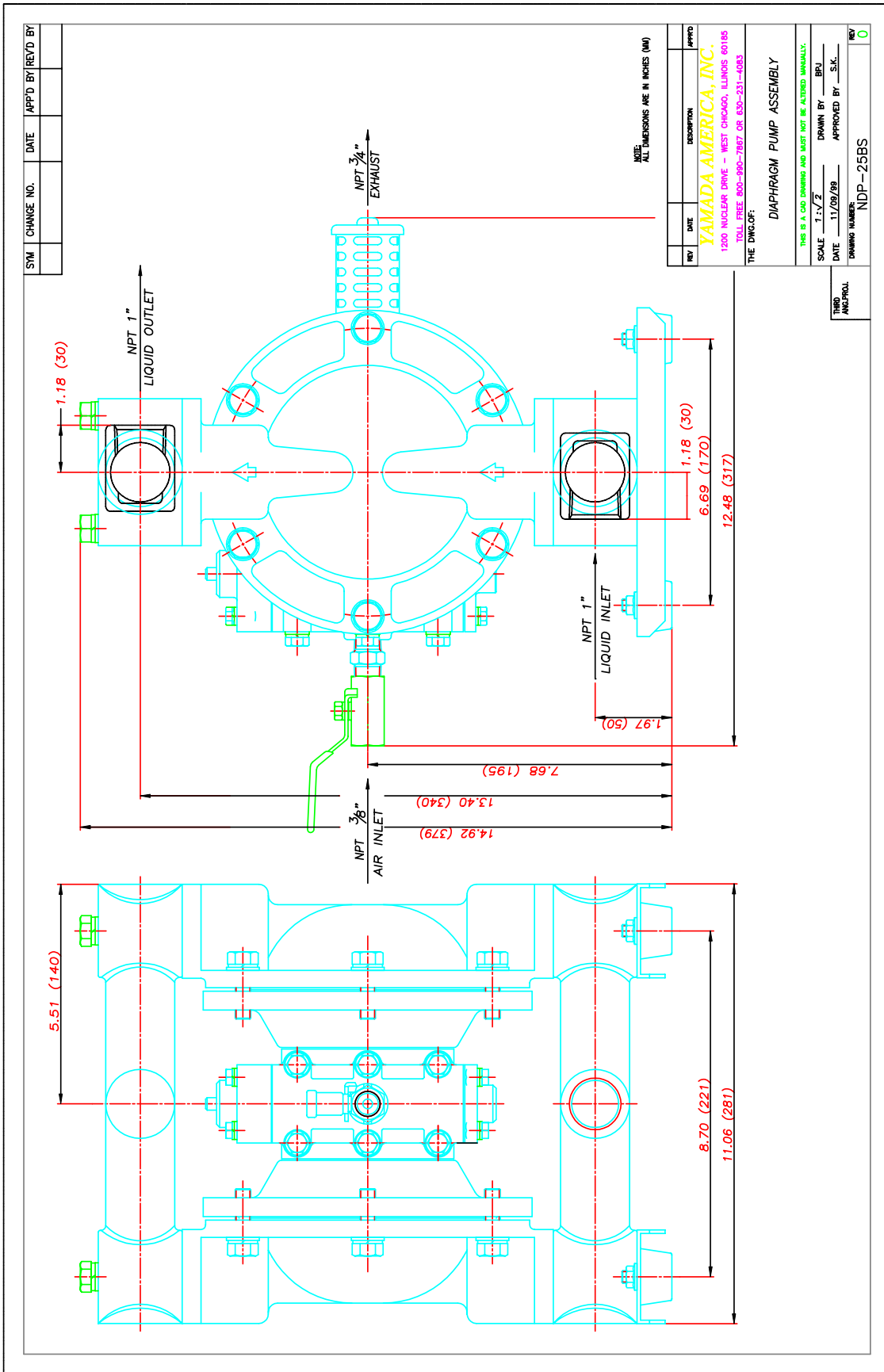
To calculate performance for Santoprene and Hytrel-fitted pumps, use Rubber Diaphragm Curve.



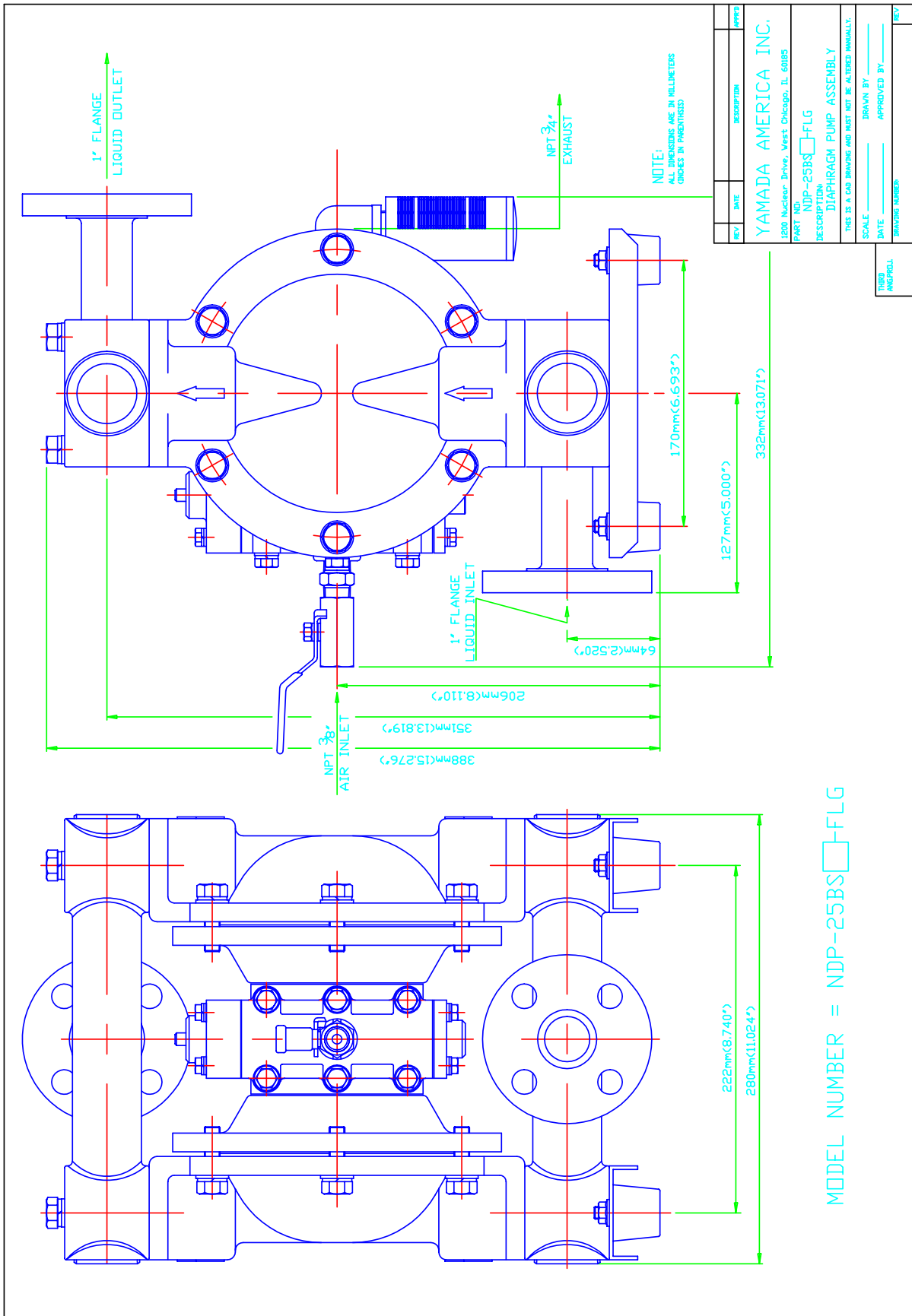


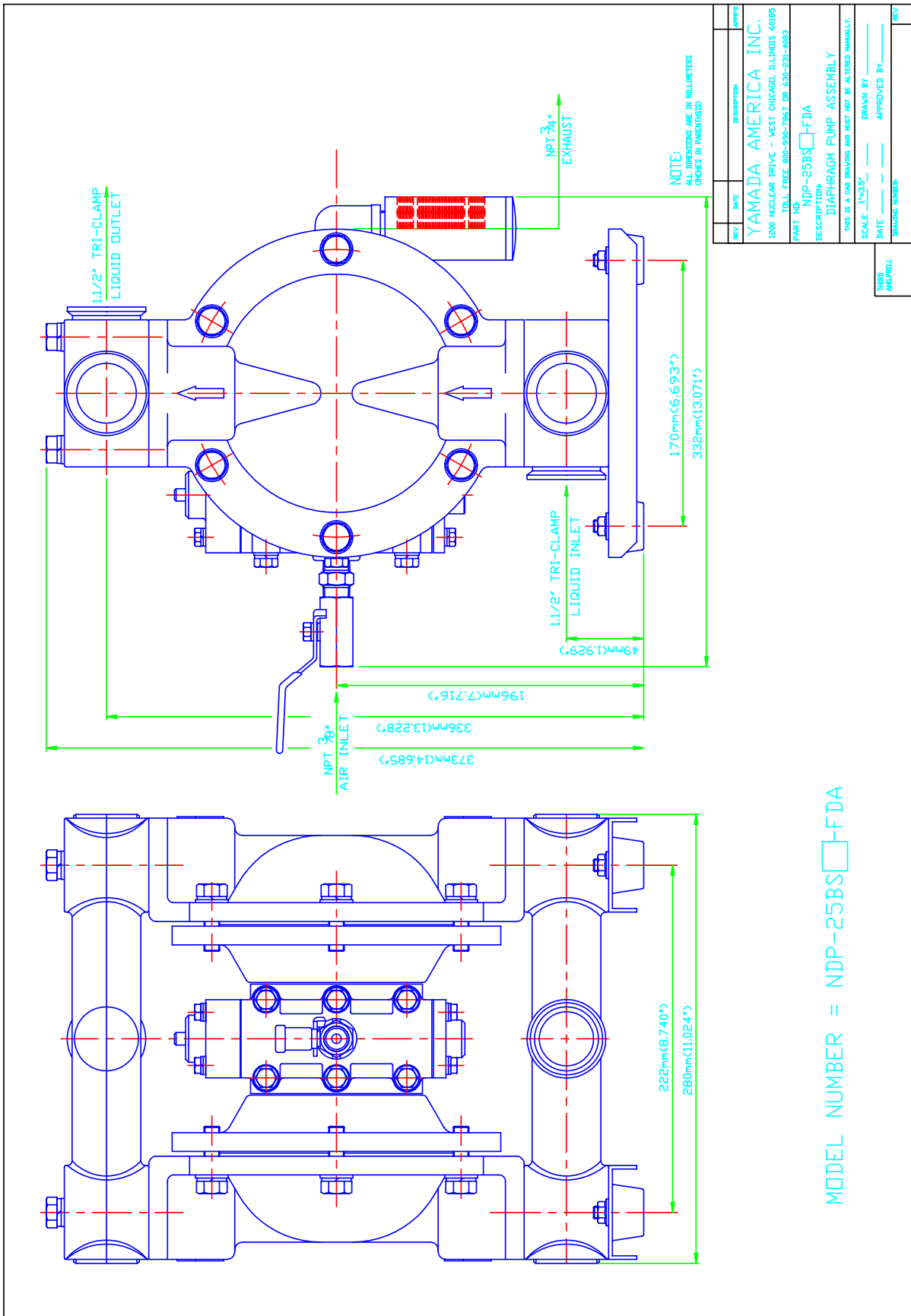


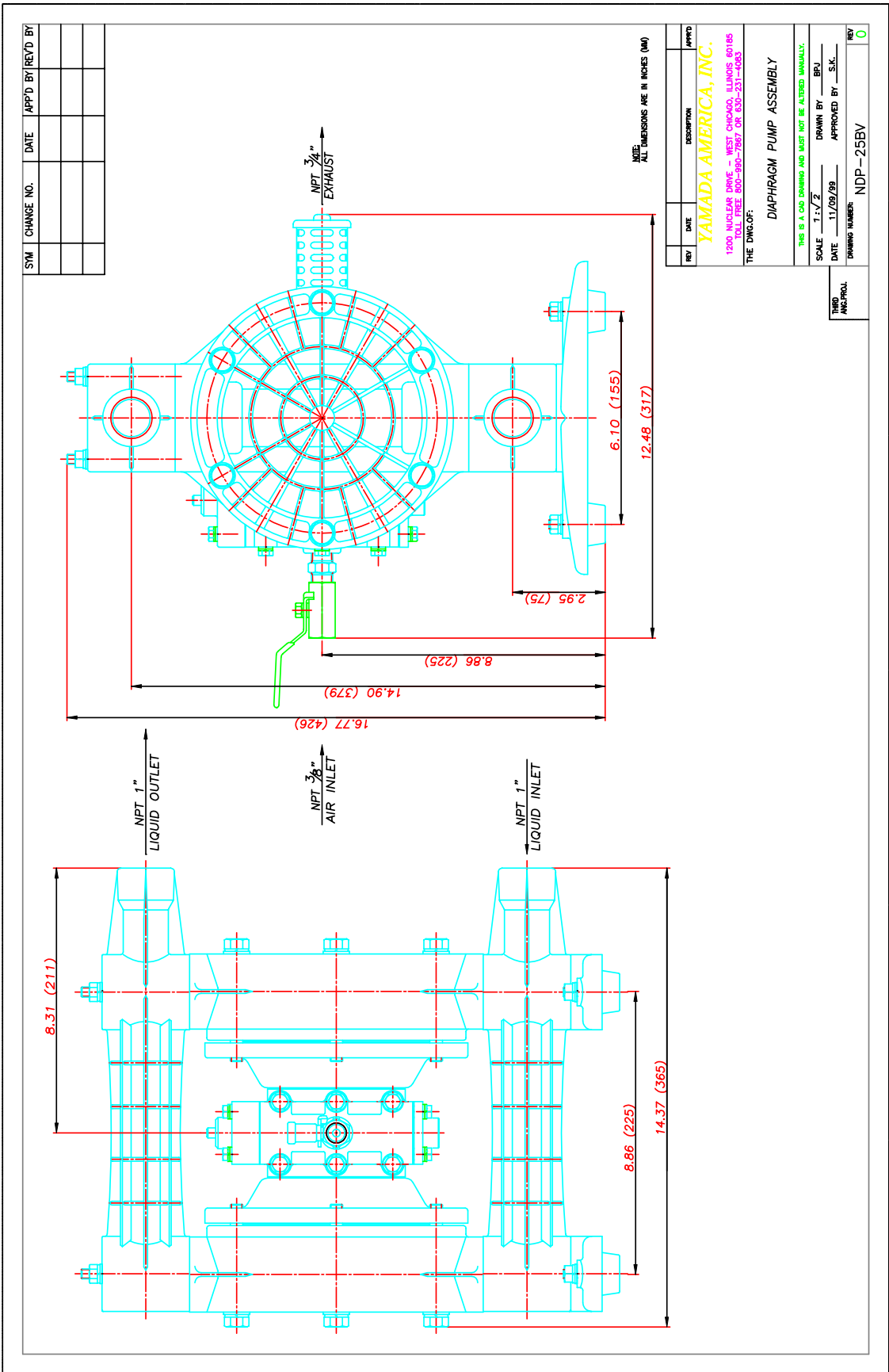












SYM	CHANGE NO.	DATE	APP'D BY	REYD BY

REV	DATE	DESCRIPTION	APP'D

**YAMADA AMERICA, INC.**  
 1200 NUCLEAR DRIVE - WEST CHICAGO, ILLINOIS 60185  
 TOLL FREE 800-990-7867 OR 630-231-4083

THE DWG. OF: **DIAPHRAGM PUMP ASSEMBLY**  
 THIS IS A CAD DRAWING AND MUST NOT BE ALTERED MANUALLY.  
 SCALE: **1:1/2** DRAWN BY: **BFJ**  
 DATE: **11/09/99** APPROVED BY: **S.K.**  
 DRAWING NUMBER: **NDP-255V** REV: **0**



**Yamada America, Inc.** 1200 Nuclear Drive, West Chicago, Illinois 60185  
 USA Toll-Free: 800 990-7867 Phone: 630 231-4083 Fax: 630 231-7405  
 E-mail: [sales@yamadapump.com](mailto:sales@yamadapump.com) Web: [yamadapump.com](http://yamadapump.com)