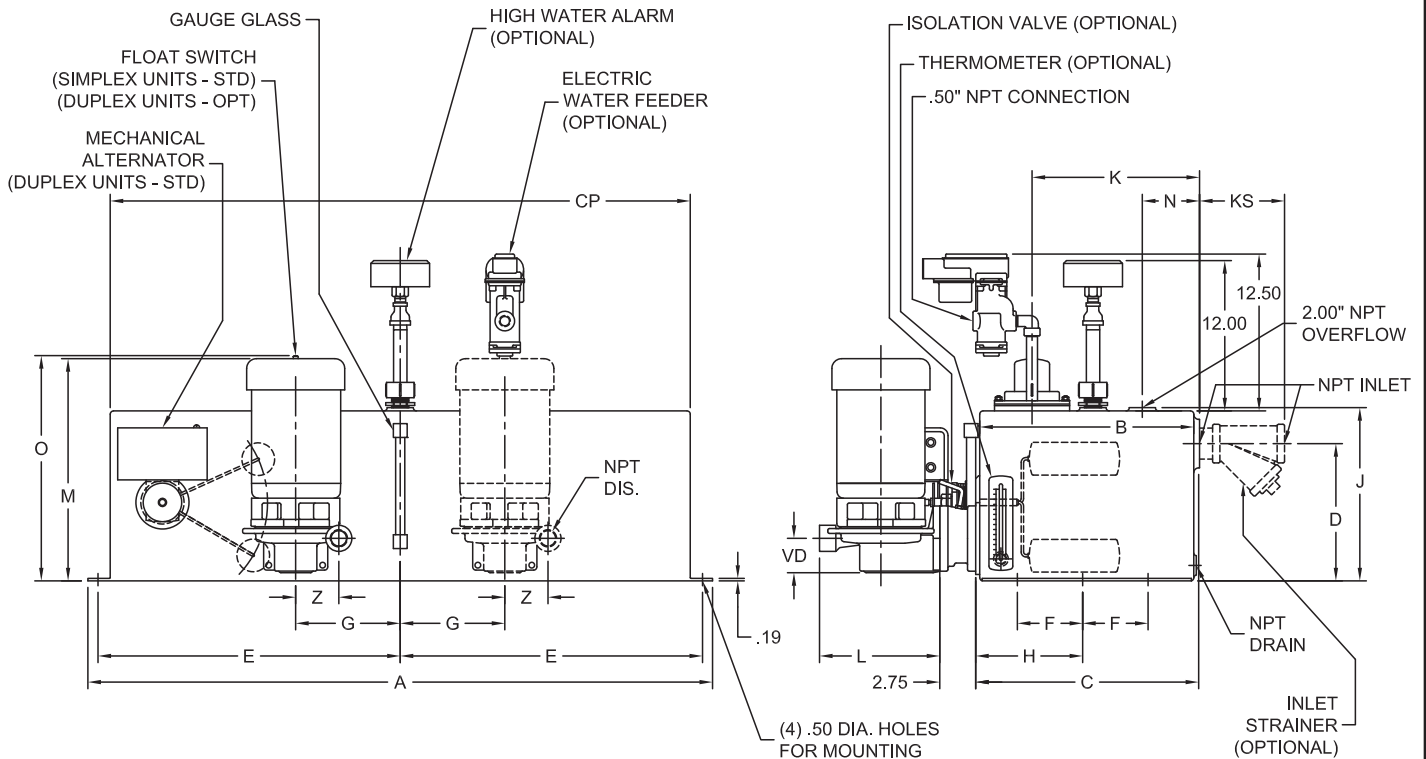


### Fabricated Steel Condensate Return Units

<b>PUMP NO.</b>	<b>PUMP:</b>	<b>MOTOR:</b>	<b>VOLTS:</b>
<b>FOR:</b>	<b>TDH:</b>	<b>HP:</b>	<b>HZ:</b>
<b>CERT. BY:</b>	<b>GPM:</b>	<b>RPM:</b>	<b>FRAME:</b>
<b>DATE:</b>	<b>RECEIVER GALLON:</b>	<b>PHASE:</b>	
		<b>ENCLOSURE:</b>	



NOTE: Optional Thermometer and Strainer ship loose for mounting by customer.

Rec. Gal.	Inlet	A	B	C	CP	D	E	F	G	H	J	K	KS	N	Pump	Dis.	M	L	VD	Z
300 S	4	63	48½	49⅝	60½	21½	31	18	12	24¼	25 <sup>9</sup> / <sub>16</sub>	45⅜	13¾	29⅝	4 ACV	1	17	9¼	2¾	3¼
350 S	4	63	48½	49⅝	60½	25½	31	18	12	24¼	29 <sup>9</sup> / <sub>16</sub>	45⅜	13¾	29⅝	4 AEV	1	23	11	3⅝	4
400 S	4	63	48½	49⅝	60½	29½	31	18	12	24¼	33 <sup>9</sup> / <sub>16</sub>	45⅜	13¾	29⅝	6 ACV	1½	23¾	11	3½	3¾
400 S	4	63	48½	49⅝	60½	29½	31	18	12	24¼	33 <sup>9</sup> / <sub>16</sub>	45⅜	13¾	29⅝	6 AEV	1½	27⅞	12¾	3½	5¼
500 S	4	63	60½	61⅞	60½	29½	31	24	12	30¼	33 <sup>9</sup> / <sub>16</sub>	57⅜	13¾	35⅝	6 AFV	1½	28⅞	16	4⅞	6¾

# Models "ACV, ADV, AEV, AFV" Condensate Units

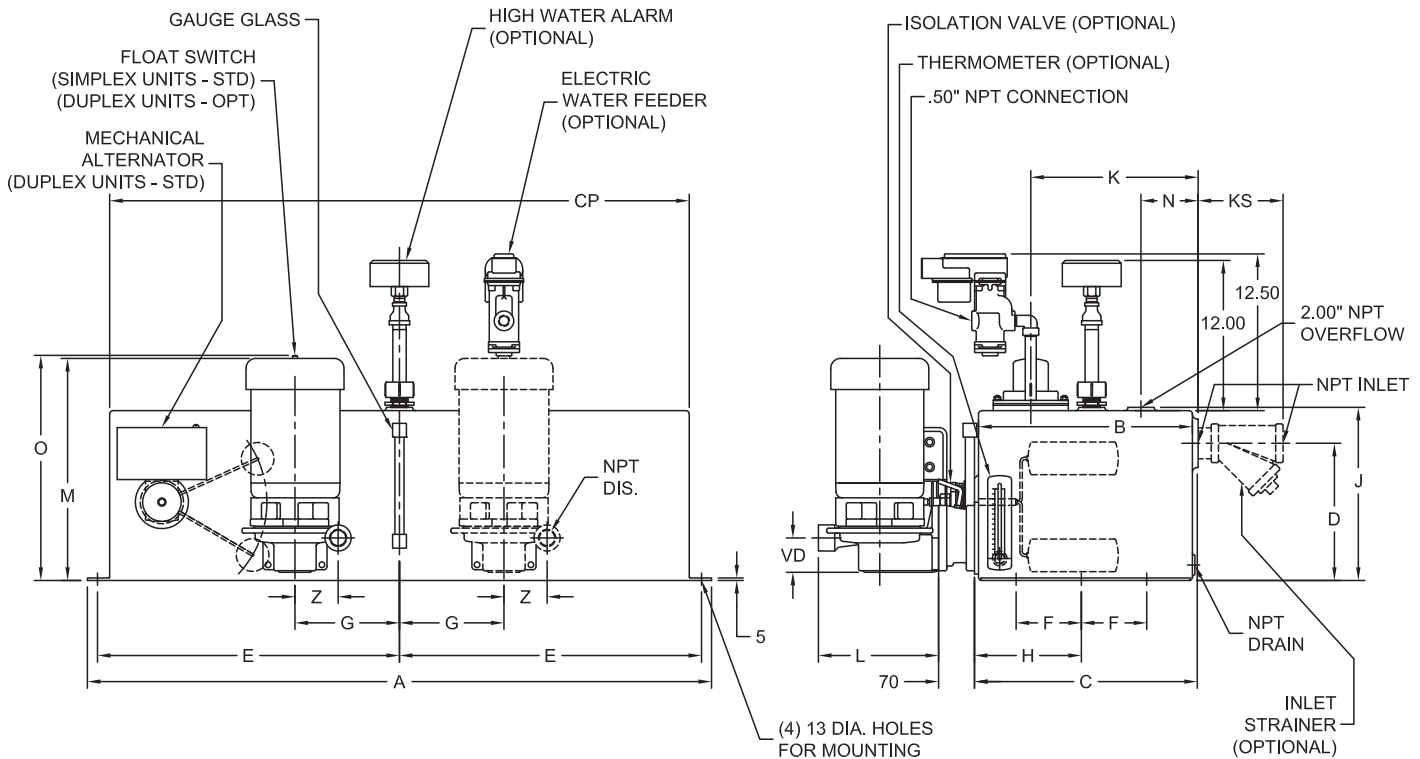


with Steel Receivers 300 Gal. & Larger  
Metric (mm)

www.cranepumps.com

## Fabricated Steel Condensate Return Units

PUMP NO.	PUMP:	MOTOR:	VOLTS:
FOR:	TDH:	HP:	HZ:
CERT. BY:	GPM:	RPM:	FRAME:
DATE:	RECEIVER GALLON:	PHASE:	
		ENCLOSURE:	



NOTE: Optional Thermometer and Strainer ship loose for mounting by customer.

Rec. Gal.	Inlet	A	B	C	CP	D	E	F	G	H	J	K	N	Pump	Dis.	M	L	VD	Z
300 S	4	1600	1232	1260	1537	546	787	457	305	616	751	1153	746	4 ACV	1	432	235	70	83
350 S	4	1600	1232	1260	1537	648	787	457	305	616	751	1153	746	4 AEV	1	584	279	92	102
400 S	4	1600	1232	1260	1537	749	787	457	305	616	852	1153	746	6 ACV	1.5	594	279	89	95
400 S	4	1600	1232	1260	1537	749	787	457	305	616	852	1153	746	6 AEV	1.5	689	324	89	133
500 S	4	1600	1537	1565	1537	749	787	610	305	768	852	1457	899	6 AFV	1.5	733	406	124	171

SECTION 910  
PAGE 8  
DATE 10/18



A Crane Co. Company

PUMPS & SYSTEMS

USA: (937) 778-8947 • Canada: (905) 457-6223 • International: (937) 615-3598