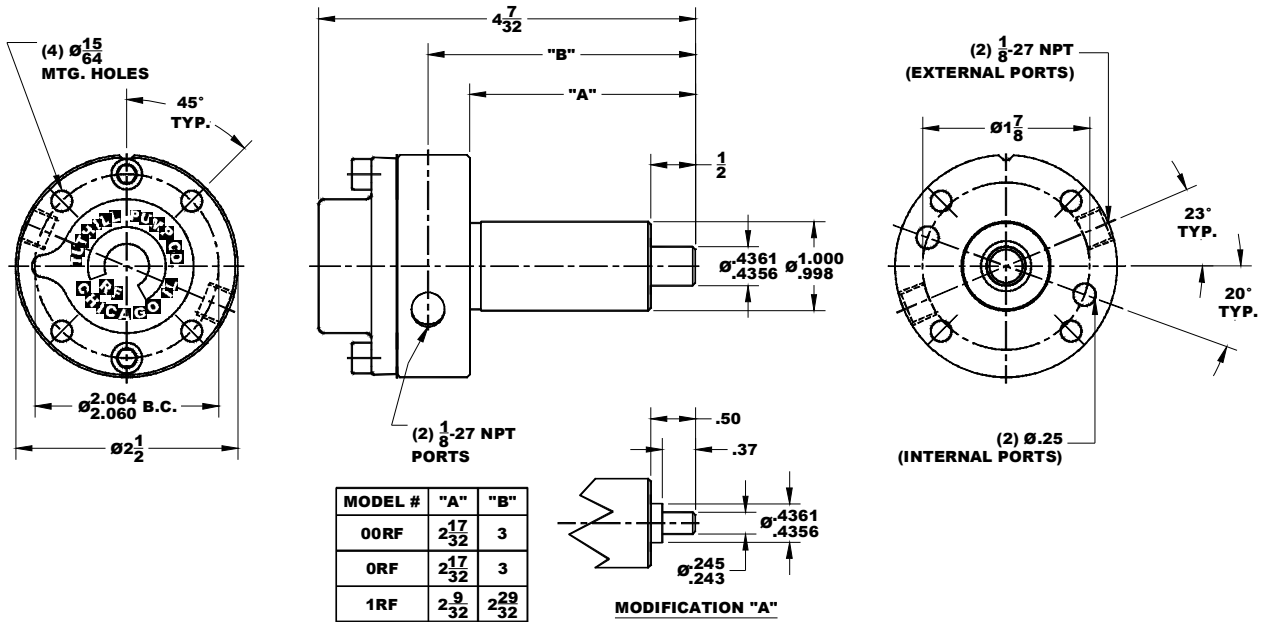




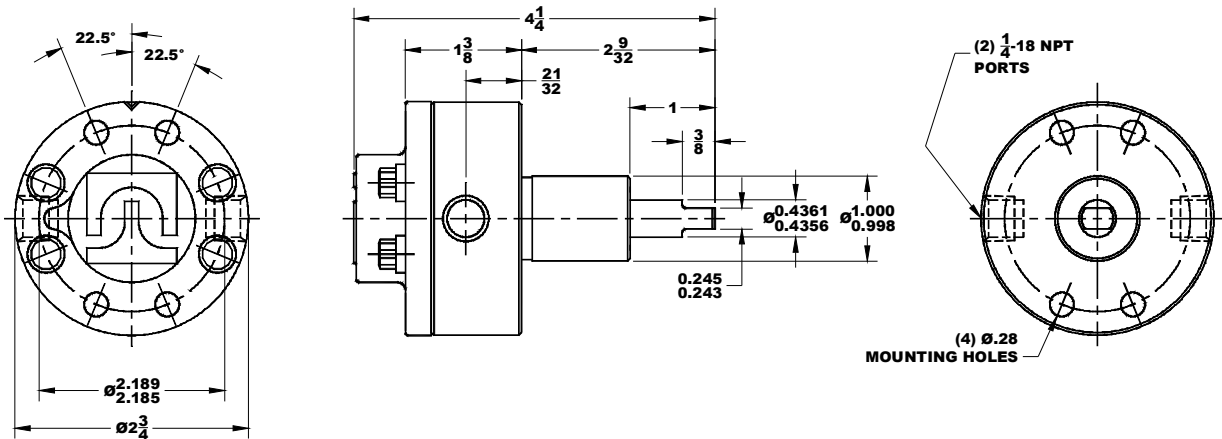
**TUTHILL**  
Pump Group

12500 South Pulaski Road  
Alsip, Illinois USA 60803  
Tel 708 389-2500 Fax 708 388-0869  
email: tuthillpump@tuthill.com  
www.tuthill.com

## 00RF, 0RF, and 1RF Pump Mounting Dimensions

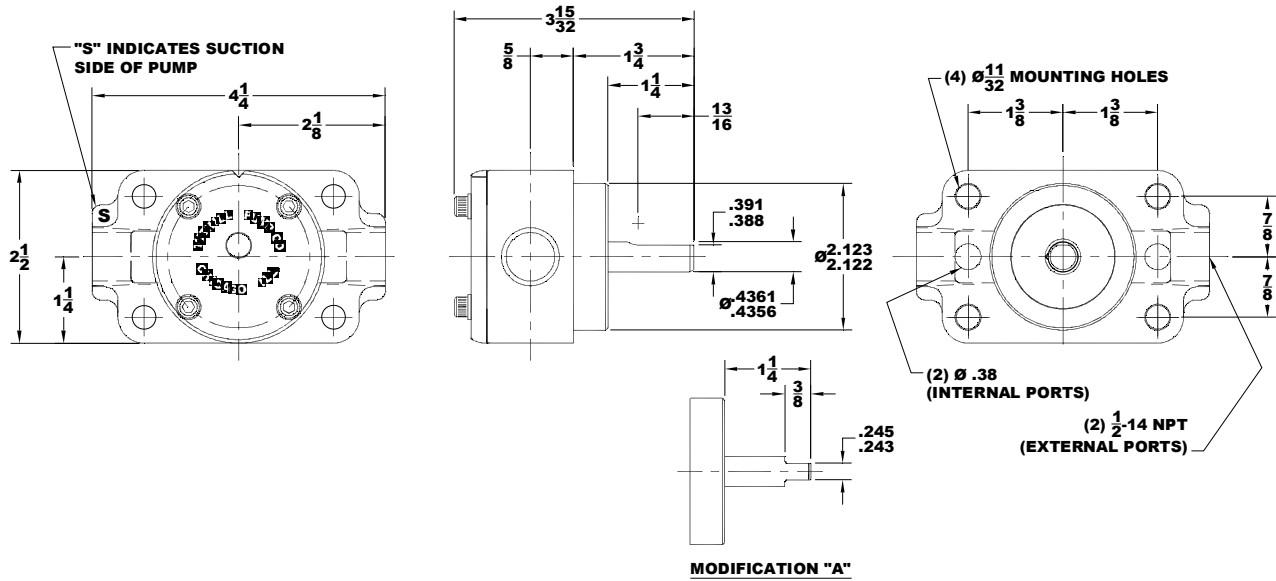


## 1R1F-A Pump Mounting Dimensions

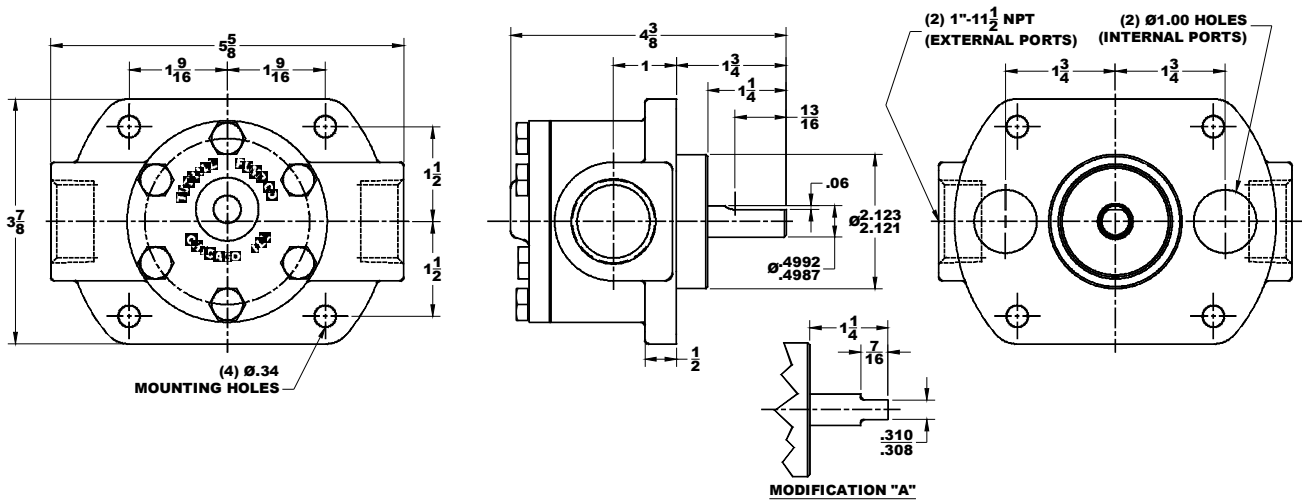




## 00LFD, 0LFD, and 1LFD Pump Mounting Dimensions

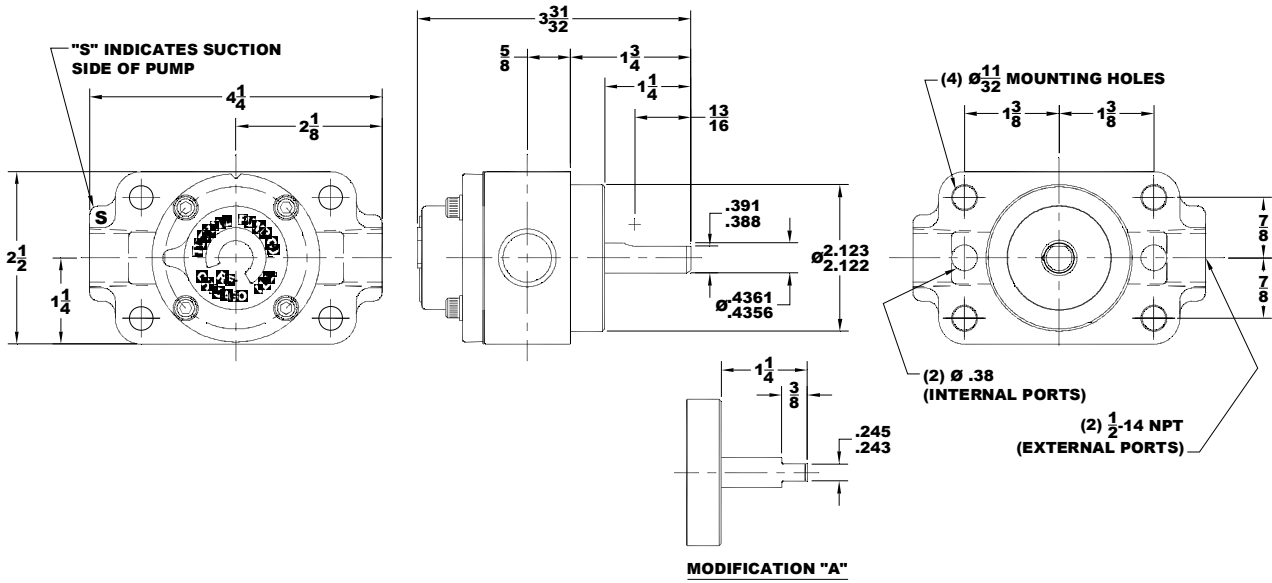


## 2LFD Pump Mounting Dimensions

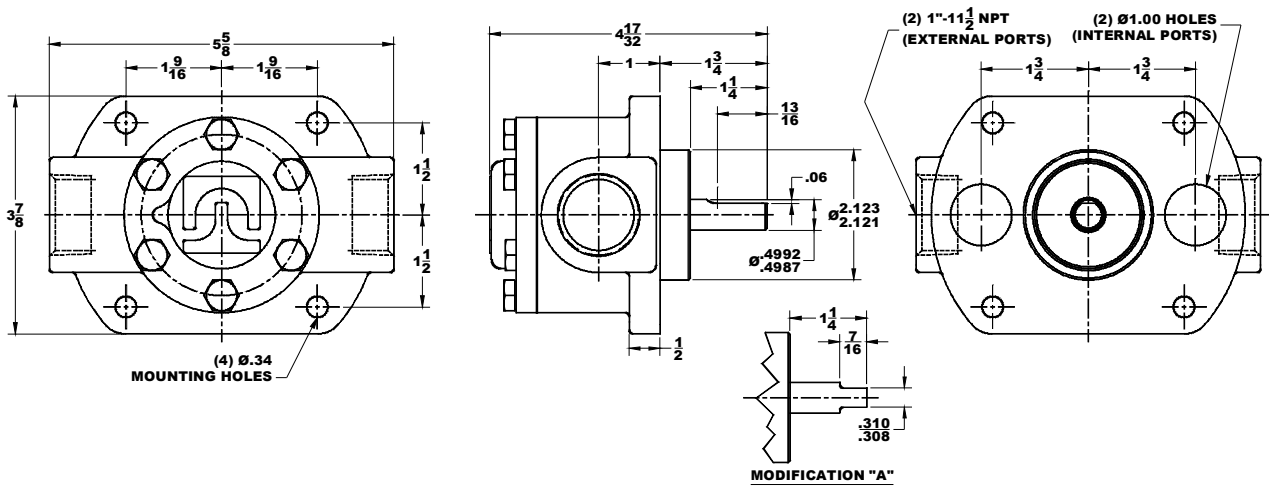




## 00RFD, 0RFD, and 1RFD Pump Mounting Dimensions

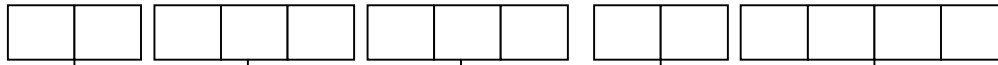


## 2RFD Pump Mounting Dimensions





## Cartridge Pump Model Number System



**Size**

00  
0  
1  
2

**Model**

RF  
LFD  
RFD

**Pump Options**

B Shaft Lip Seal  
U Cover Rotated 180°  
K Ball Bearing\*  
\* Available on 00-1 Size  
LFD & RFD Models

**Modifications**

-A Tang Shaft  
-1 External Ports  
-2 Internal/External Ports  
-7 Viton Seal\*\*  
\*\* Available on 00-1 Size  
LFD & RFD Models

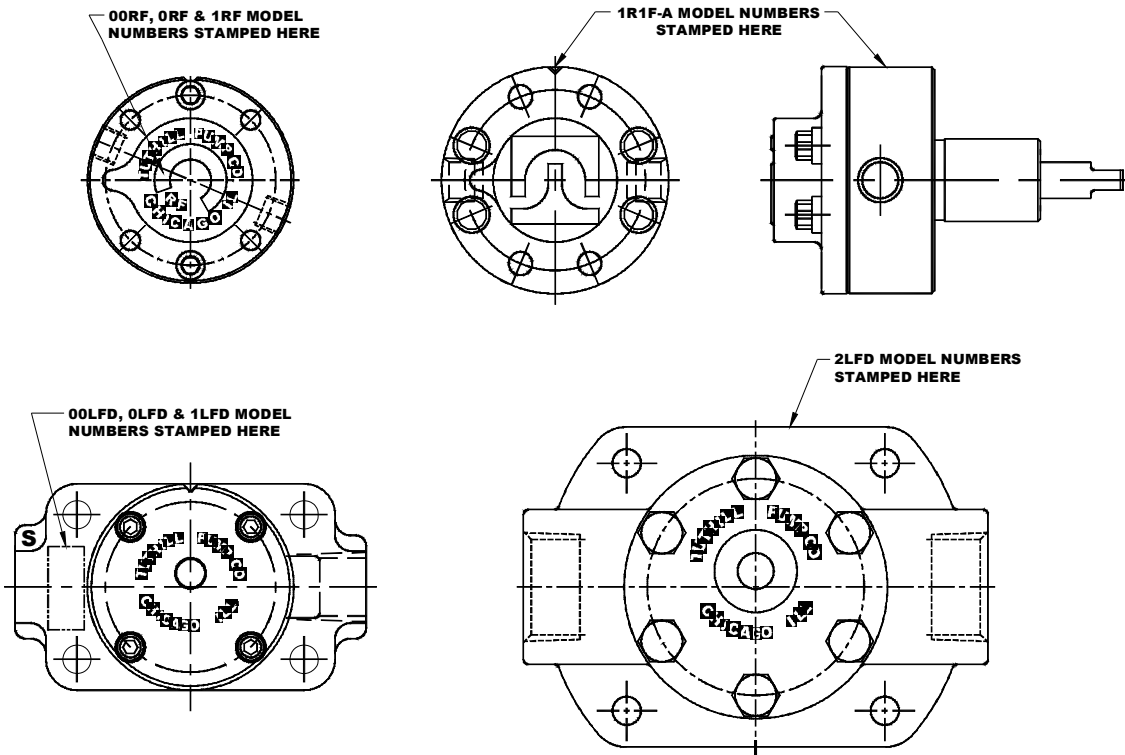
**Rotation (Sealed Models)**

-C Clockwise Rotation  
-CC Counterclockwise Rotation

**Note:**

1. Shaft seal not available on RF model pumps.
2. 1R1F-A pump available as shown.

### Model Number Locations





## Cartridge Pump Materials of Construction

<i>Part Name</i>	<i>Material</i>	<i>Standard</i>	<i>Comments</i>	<i>Availability</i>
Housing	Cast Iron	ASTM A48 – 96a	Classes 25, 30, 35, or 40	Std.
Housing Bushing	Steel	AISI 12L14		Std.
Cover	Cast Iron	ASTM A48 – 96a	Classes 25, 30, 35, or 40	Std.
Rotor	Steel	ASTM A311	Stressproof	Std.
Idler	P/M Steel	MPIF-0508-P		Std.
	Steel	C1118 or C1117		Opt.
Idler Pin	Steel	C1117	Heat Treated	Std.
Idler Bushing	Bronze	SAE 660		Opt.
	Carbon	Carbon Graphite Resin		Opt.
Gaskets	Standard	Oriented Polyester		Std.
	Standard	Buna Coated Aluminum		Std.