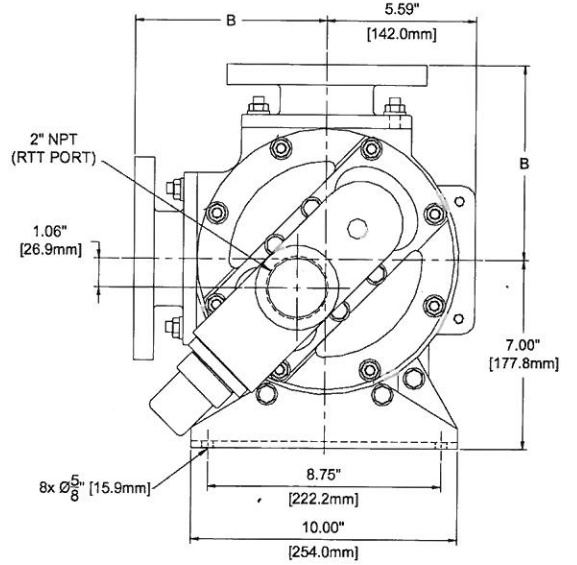
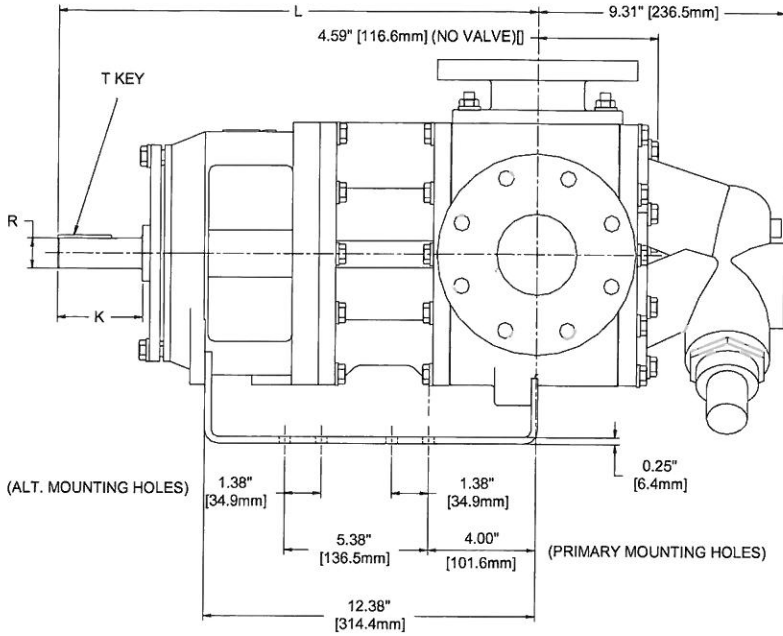


GlobalGear® Pump Mounting Dimensions (GG200 – GG210 with Angle Ports)



Shaft Design	K	R	T	L
Inch (")	3.04	1.125	1/4 x 1/4 x 2	17.85

Port Type	B
FNPT	6.56" [167mm]
ANSI flanged	7.19" [183mm]

Face Type	Size-Rating
Raised Face	4"-ANSI 125# thru 300#
	2"-ANSI 125# thru 300#
Flat Face	2.5"-ANSI 125# / 150#
	3"-ANSI 125# thru 300#

Back Pull-Out Dimensions	
Size	Min Spacer
GG200	4.01" [102mm]
GG210	4.61" [117mm]

