

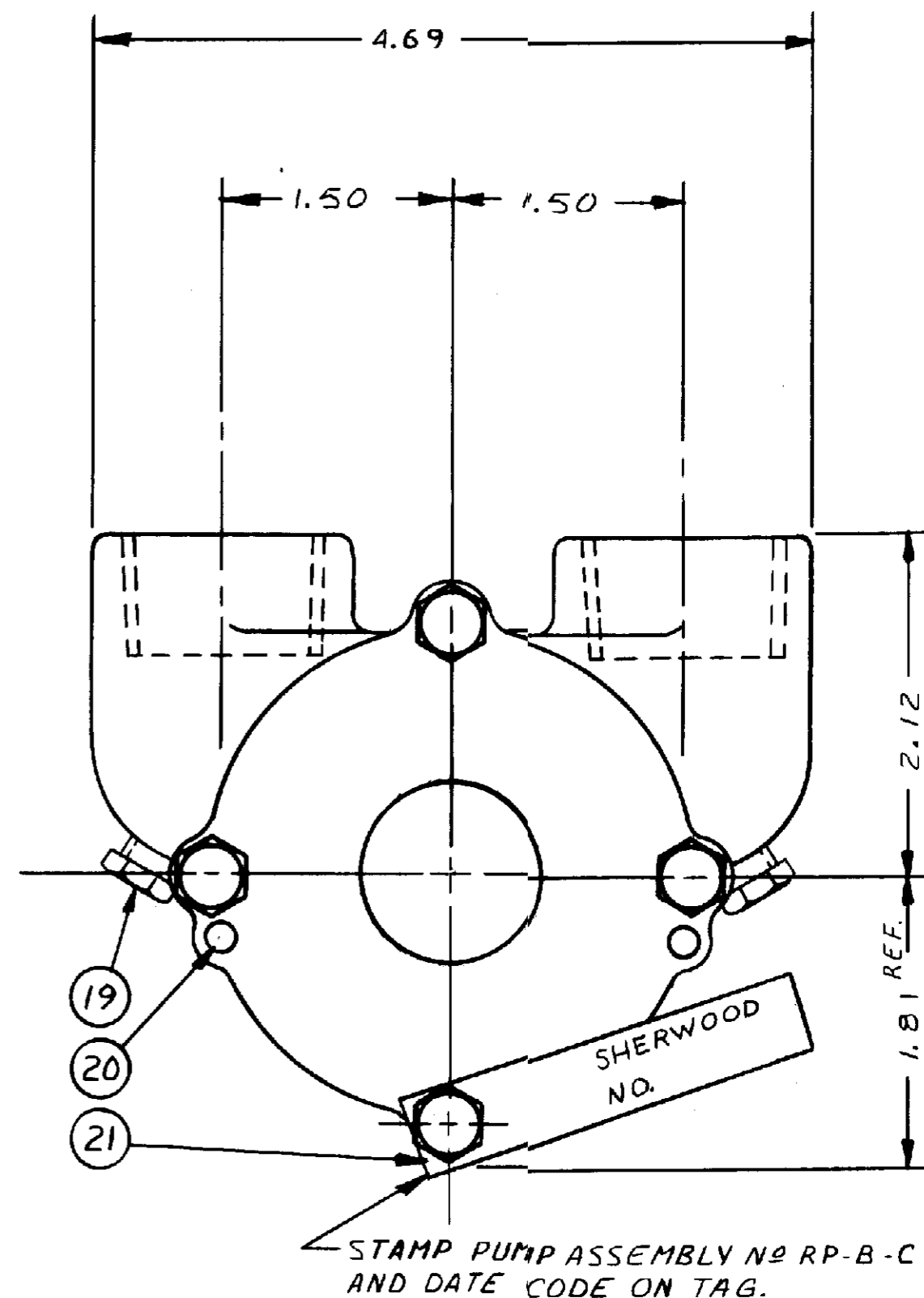
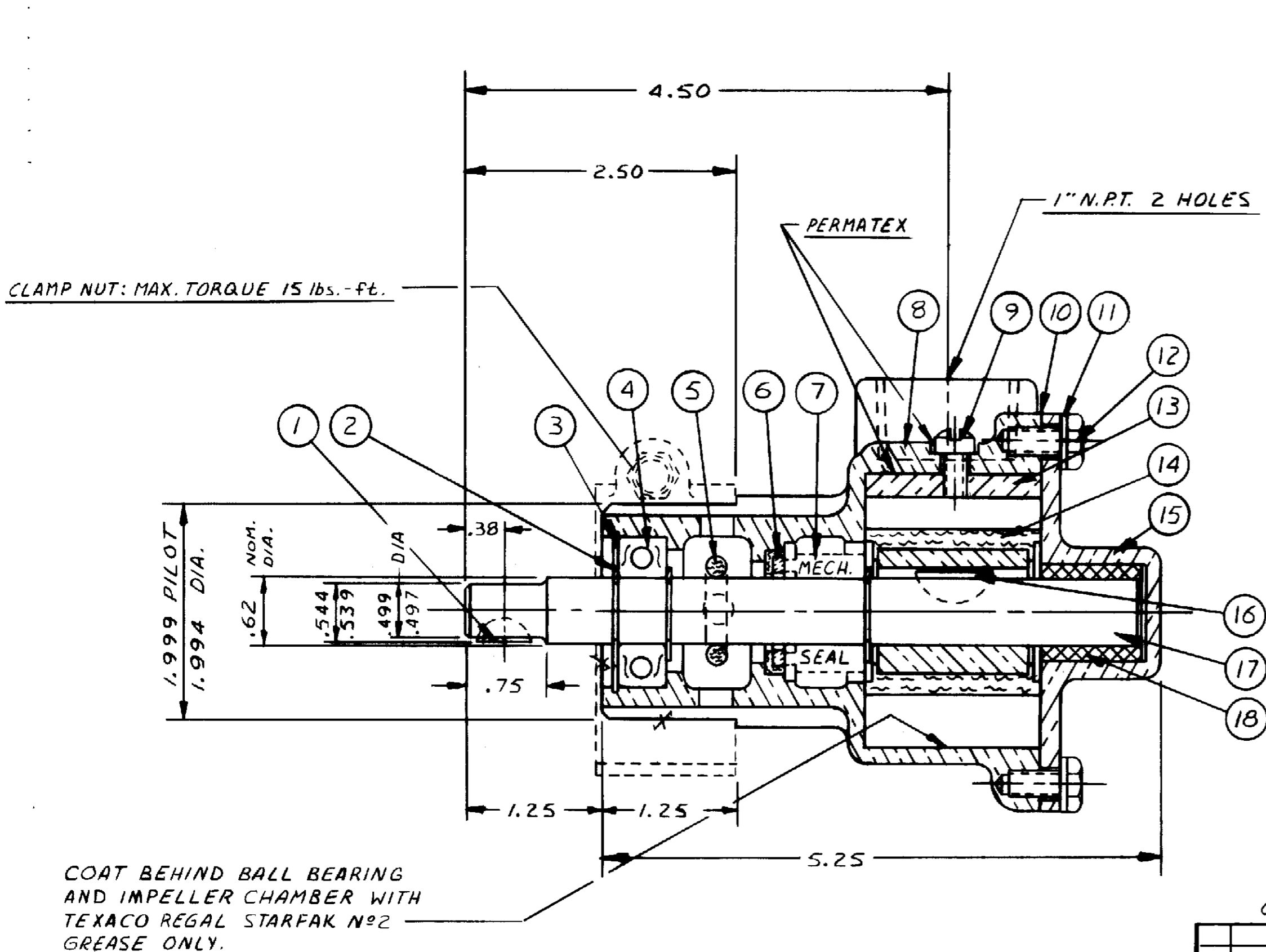
PARTS LIST

ITEM	DESCRIPTION	PART N ^o	QTY.	ITEM	DESCRIPTION	PART N ^o	QTY.
1	KEY	10093	1	16	KEY	4432	1
2	EXT. RETAINING RING	4258	3	17	SHAFT	11374	1
3	INT. RETAINING RING	4259	1	18	GRAPHITE BUSHING	6333	1
4	BALL BEARING	4257	1	19	DRAIN PLUG	336	2
5	SLINGER	10891	1	20	PIN	1311	2
6	SEAL SEAT	10926	1	21	TAG	13285	1
7	MECHANICAL SEAL	18743	1	22	BODY & PIN ASS'Y	11372	SERV.
8	BODY	11370	1	23	COVER ASS'Y	10183	SERV.
9	CAM SCREW	10515	1	24	SEAL & SEAT ASS'Y	10927	SERV.
10	GASKET	10931	1	25	MINOR REPAIR KIT	10999	SERV.
11	LOCKWASHER	12710	4	26	MAJOR REPAIR KIT	11068	SERV.
12	HEX. HD. BOLT	1482	4				
13	CAM	10944	1				
14	IMPELLER	10615	1				
15	COVER	10182	1				

UNIT PACKAGING:

N^o 17636 CARTON W 1 REQ'D
 12209 LABEL 1 REQ'D
 14486 JIFFY BAG #4 1 REQ'D

2210-0001



CURVE N^o 64004R

REV	DESCRIPTION	APPR	DATE
K	REDRAWN WITHOUT CHANGE	R.B.	2-22-90

UNLESS OTHERWISE SPECIFIED
 CAST DIMENSIONS ± .02
 FILLETS & RADI .06
 FINISH STOCK .07
 MACHINING TOLERANCE, INCHES
 XX ± .01, XXX ± .005
 SURFACE ROUGHNESS
 ANGLES ± 0° 30'
 CORNER BREAKS .01 MAX.

FLATNESS .0015 IN/IN
 SQUARENESS .0015
 CONCENTRICITY .002
 ROUNDNESS .0006
 RUNOUT .002

SHERWOOD
 A DIVISION OF HYPRO CORPORATION
 6331 E. JEFFERSON AVE. • DETROIT, MICHIGAN 48207

DRAFTSMAN	DATE	CHECKER	DATE	APPY NO.
GJB	6-22-67	A.V.B.	6-22-67	

TITLE
RUBBER IMPELLER PUMP

MATERIAL
 SEE DETAILS

DWG. NO.
RP-B-C

PROJ. NO. AP-209