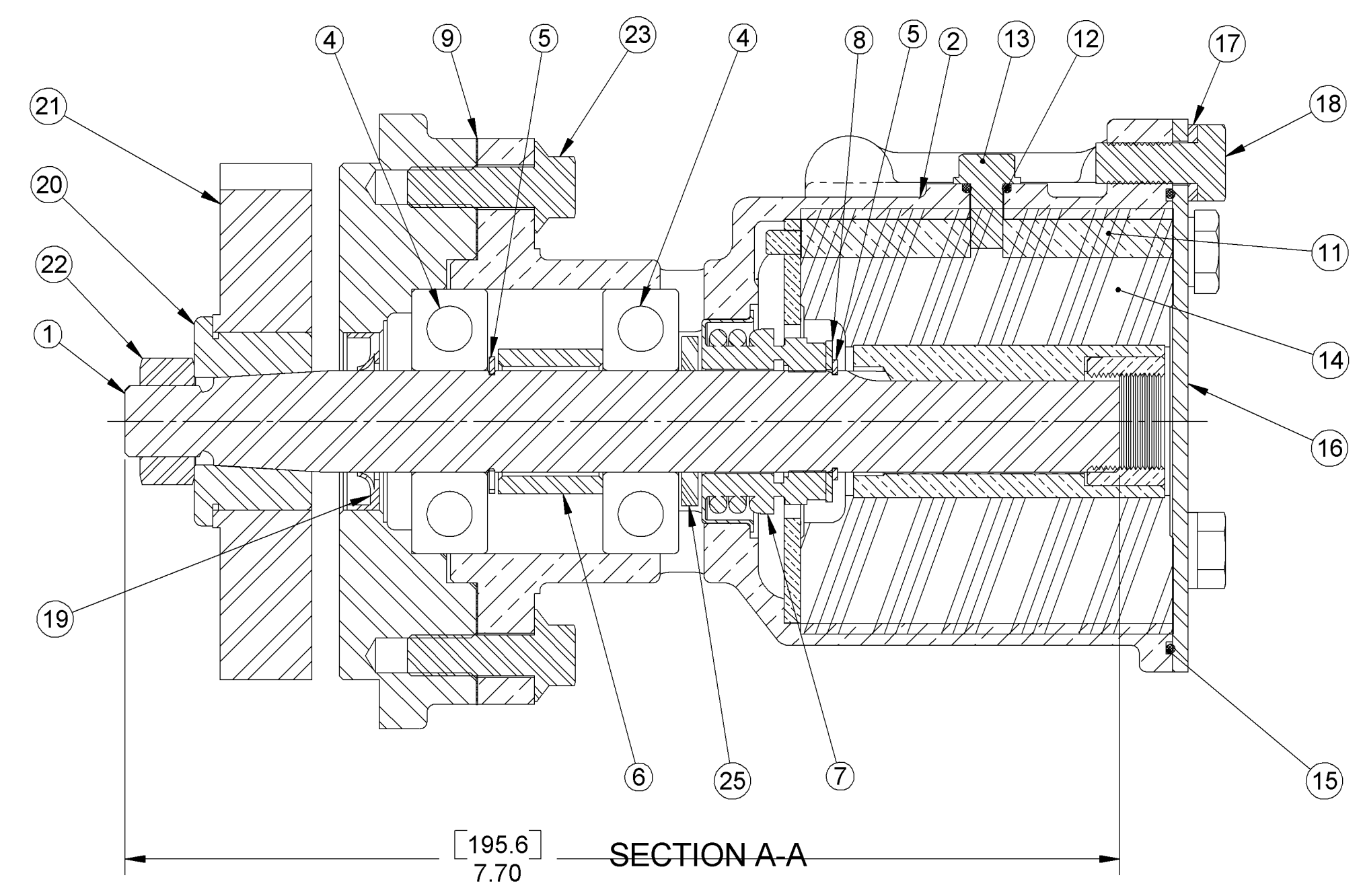
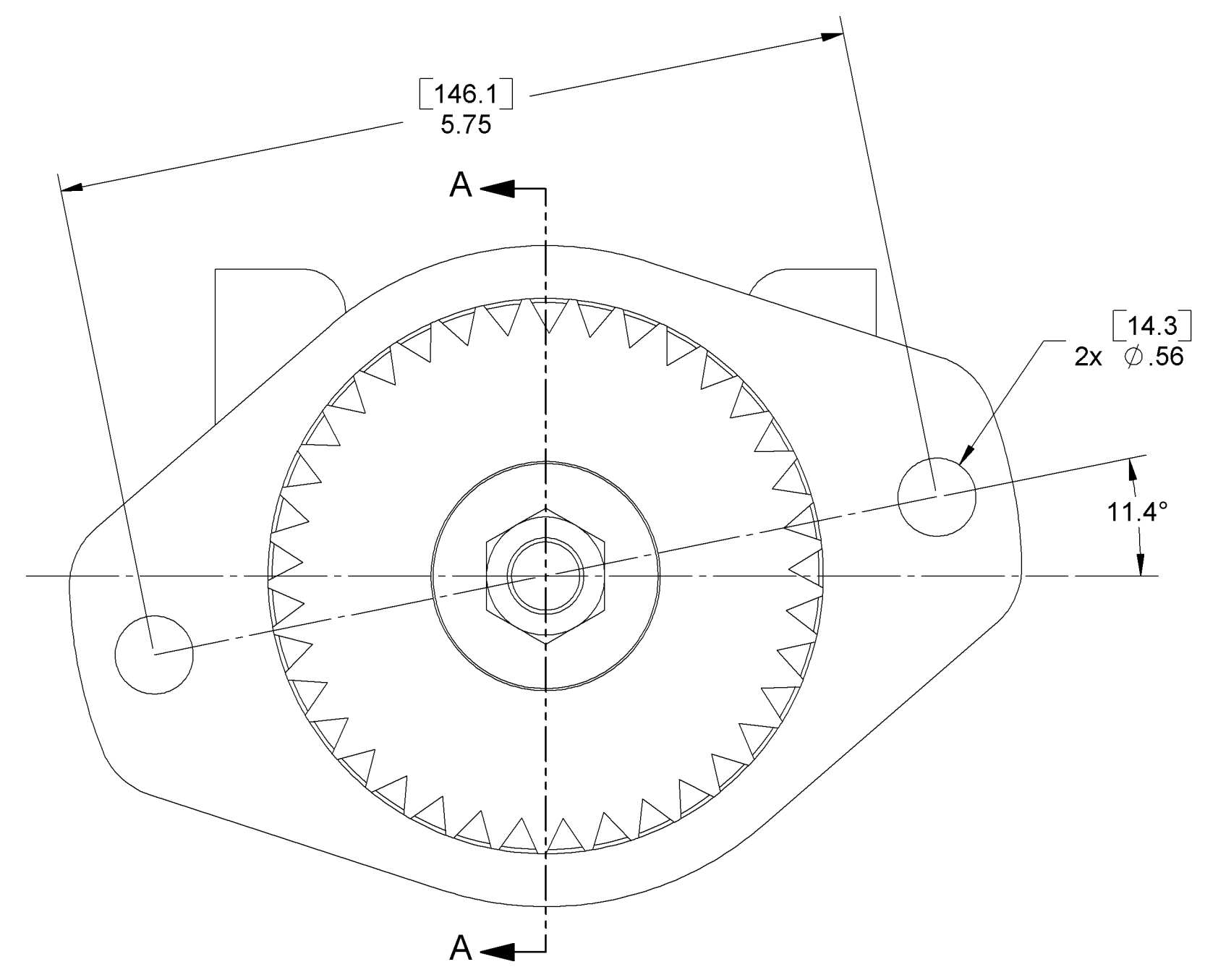
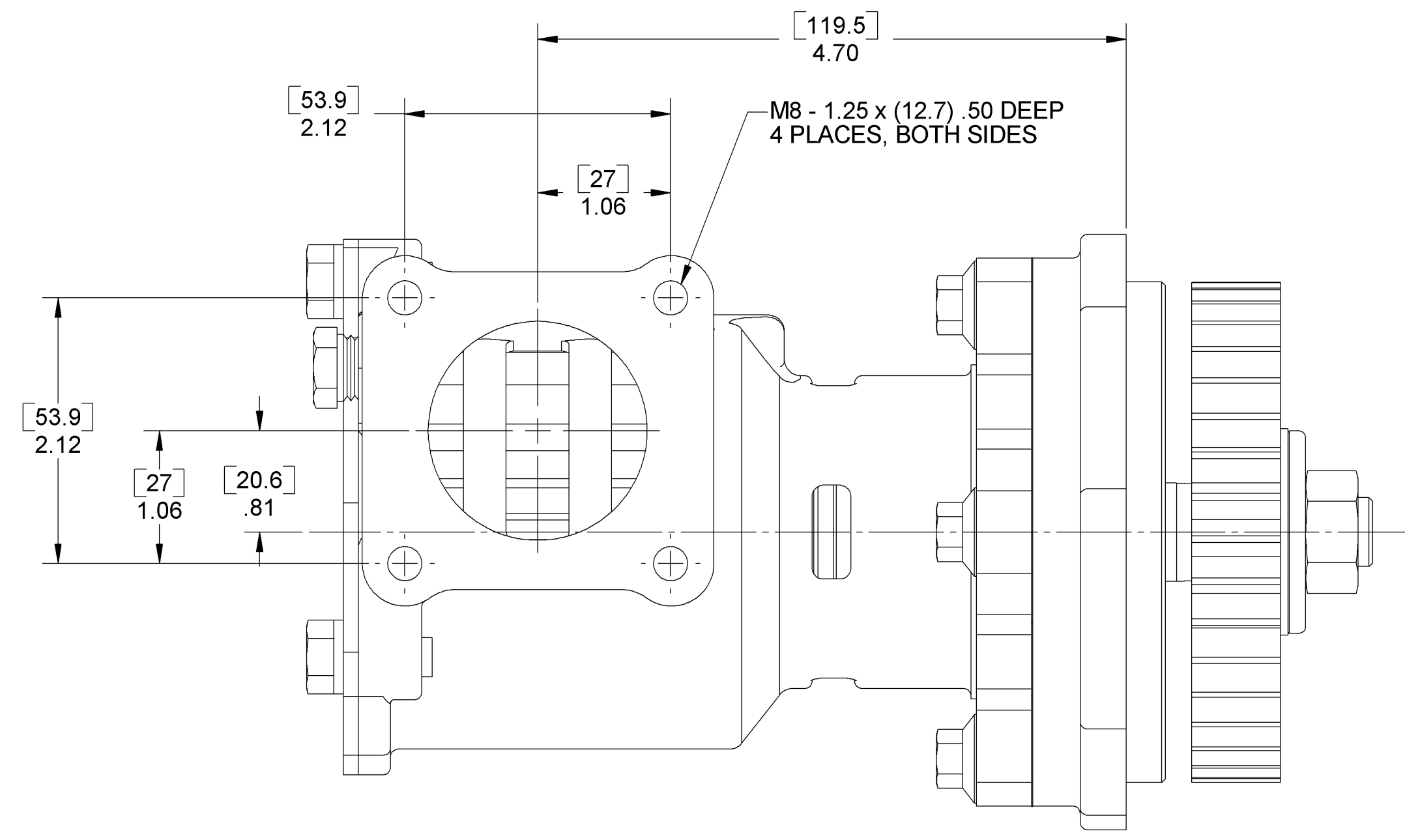


- ASSEMBLY NOTES:**
1. USE LOCTITE PRIMER AND LOCTITE 262, OR EQUIV. ON FLANGE BOLTS, (ITEM 23), AND TORQUE TO 18 FT/LBS.
  2. USE SILICON LUBRICANT TO AID IN INSTALLATION OF RUBBER IMPELLER, (ITEM 14)
  3. USE PAC-EASE OR EQUIV. WHEN INSTALLING MECHANICAL SEAL, (ITEM 7)
  4. LIP SEAL, (ITEM 19), TO BE INSTALLED DRY.
  5. COAT ALL BARE METAL SURFACES WITH A RUST INHIBITOR PRIOR TO PACKING.
  6. STAMP P2730X, DATE CODE, AND USA ON COVER PLATE, (ITEM 16).

ITEM NO.	QTY.	PART NO.	DESCRIPTION
1	1	24175	SHAFT
2	1	24176	HOUSING
3	1	21985	BODY
4	2	15951	BALL BEARING
5	2	15952	EXT. RETAINING RING
6	1	24222	SPACER
7	1	23799	MECH SEAL (SIL. CARB.)
8	1	15959	FLAT WASHER
9	1	21570	GASKET
10	1	24162	PIN / PLATE ASSY
11	1	21318	CAM
12	1	19712	O-RING
13	1	19714	CAM SCREW
14	1	27000	RUBBER IMPELLER
15	1	15945	O-RING
16	1	18742	COVER PLATE
17	3	15944	LOCK WASHER
18	3	19626	BOLT
19	1	19674	LIP SEAL
20	1	19999	INSERT
21	1	22494	GEAR
22	1	19730	NUT
23	4	19708	FLANGE HEAD BOLT
24	2	00339	PIPE PLUG
25	1	24156	SLINGER



<p><b>SHERWOOD</b> A Div. of Hypro Corporation A WICOR COMPANY 375 Fifth Avenue NW, New Brighton, MN 55112, (651) 766-6300</p>		<p>EXPERIMENTAL PART NO. _____ REV. _____</p>
<p>DRAWING BASED ON ASME Y14.5M-1994 DO NOT SCALE PRINT</p>		<p>ENGRG REL: 3642 DATE: 09-23-03 DWG BY: FLA DATE: 06-05-03 CHECKED BY: DV DATE: 09-23-03</p>
<p>THIRD ANGLE PROJECTION SCALE 1 : 1</p>		<p>THIS DRAWING IS THE PROPERTY OF HYPRO AND WITHOUT WRITTEN AUTHORIZATION, MUST NOT BE COPIED OR COMMUNICATED.</p>
<p>FORM FM4H-031 REV. _____</p>	<p>REV. ECN REVISION DESCRIPTION CHKD DATE</p>	<p>PART DESCRIPTION <b>IMPELLER PUMP</b> PART NUMBER <b>P2730X</b> REV. <b>A</b></p>