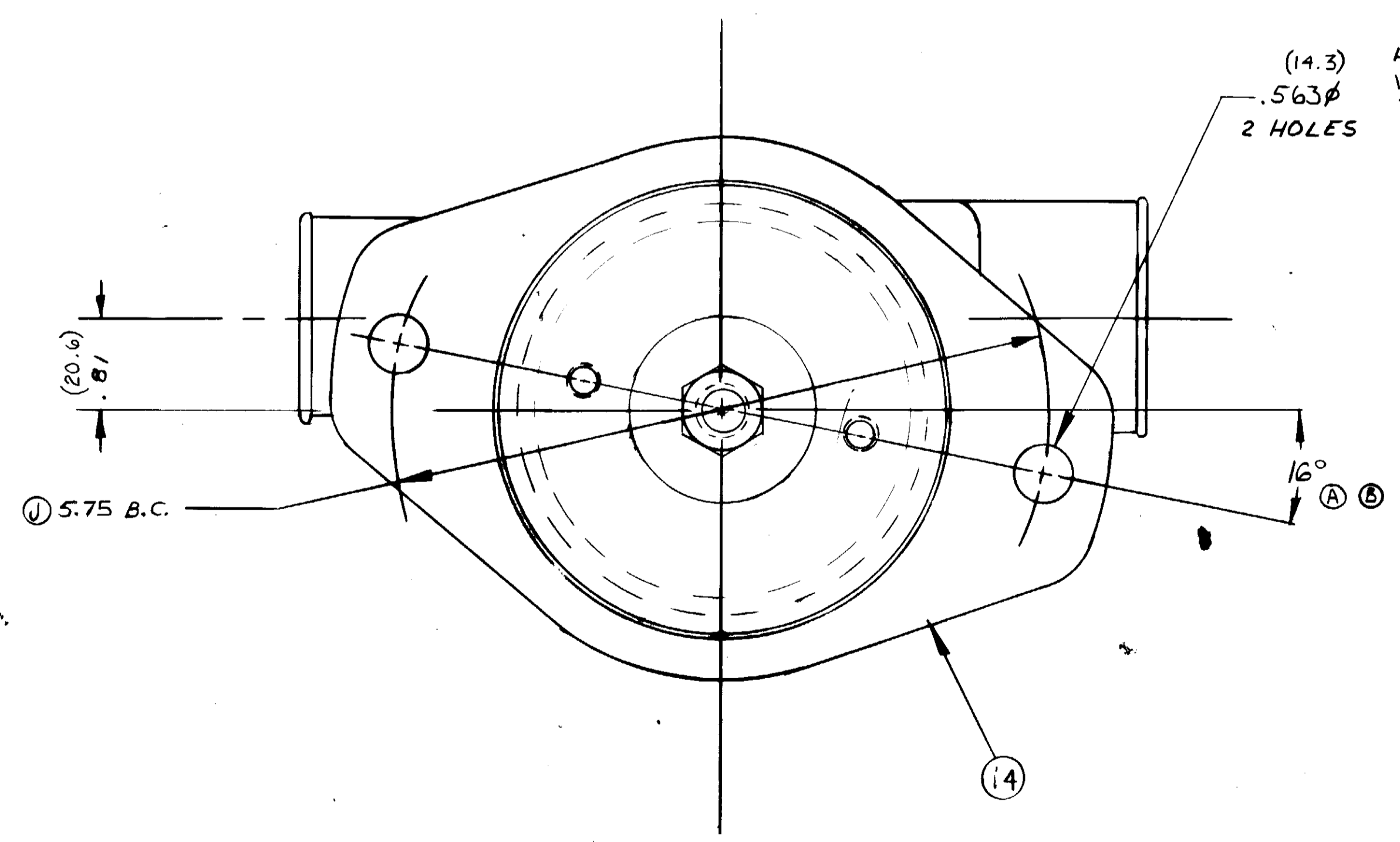
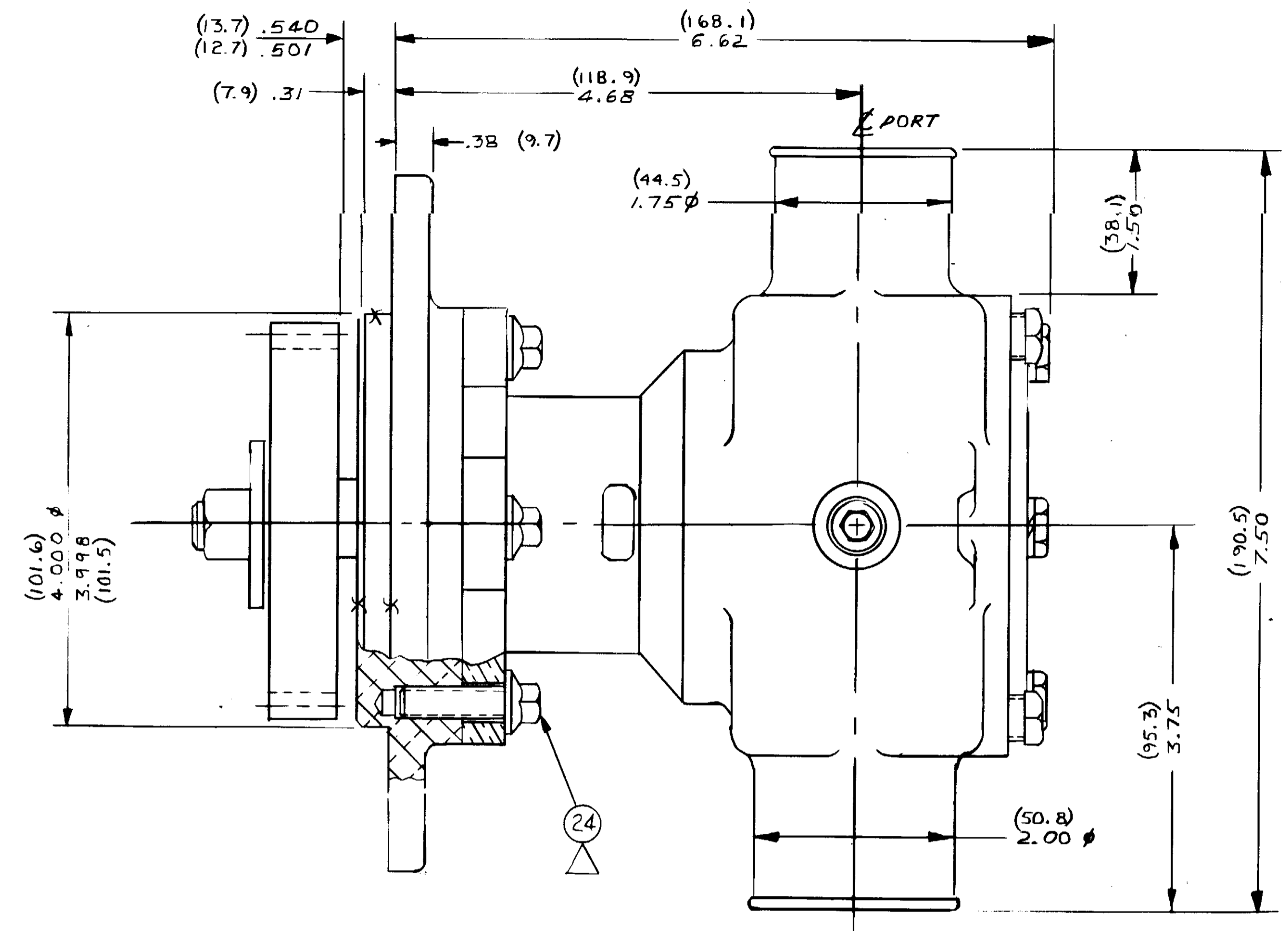


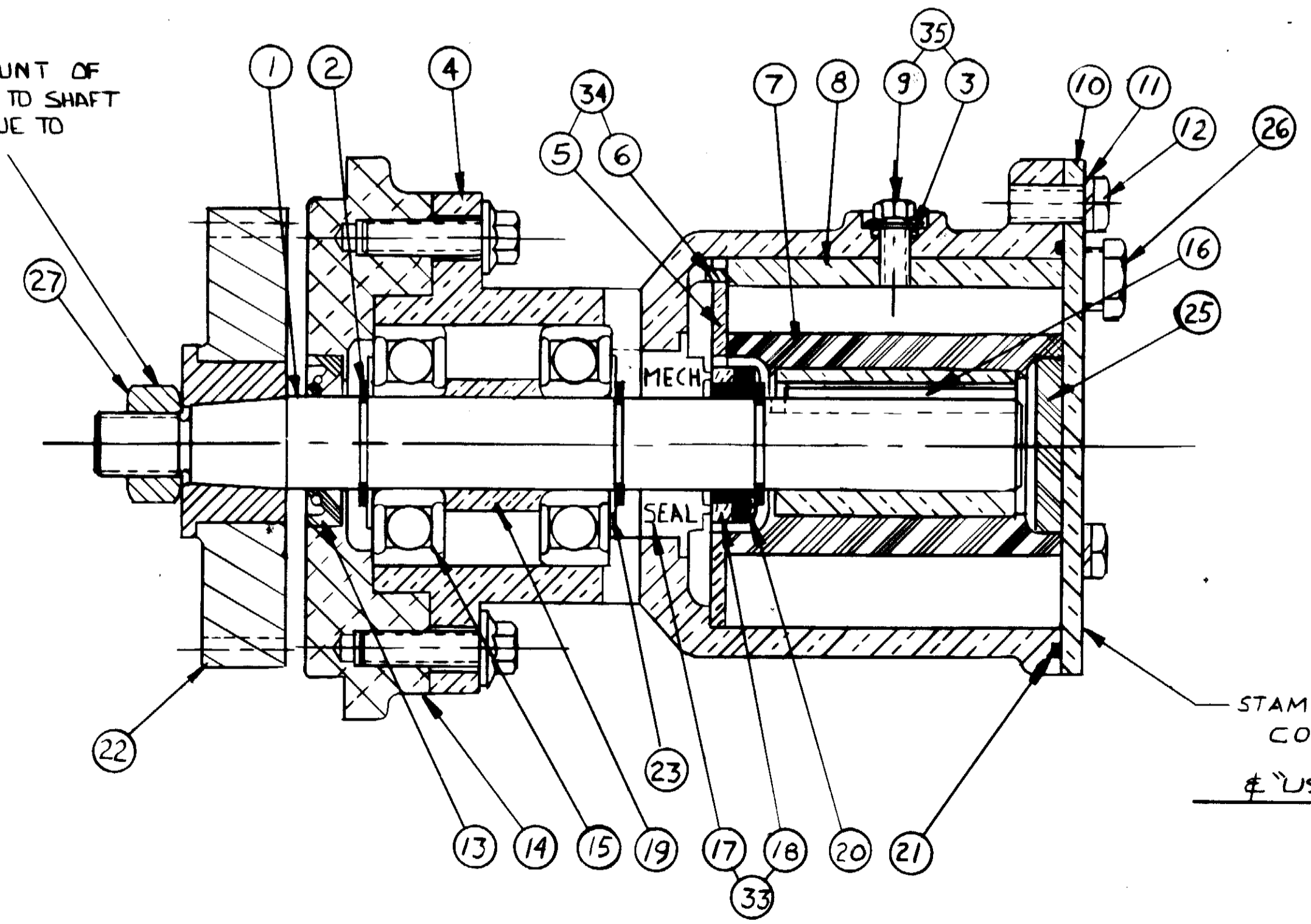
PARTS LIST			
ITEM	DESCRIPTION	REQ'D	PART NO.
1	SHAFT	1	19616
2	EXT. RET. RING	3	15952
3	O-RING	1	19712
4	HOUSING	1	19630
5	END PLATE	1	16047
6	RD. HD. PIN	1	18442
7	RUBBER IMPELLER	1	17000
8	CAM	1	18271
9	CAM SCREW	1	19714
10	COVER PLATE	1	18742
11	LOCKWASHER	3	15944
12	MBX1.25 HEX. HD. CAP	3	19626
13	LIP SEAL	1	21585
14	FLANGE MOUNTING ADAPTER	1	19955
15	BALL BEARING	2	15951
16	KEY	1	19667
17	MECH. SEAL	1	15954
18	SEAL SEAT	1	15953
19	SPACER	1	19615
20	FLAT WASHER	1	15959
21	O-RING	1	15945
22	GEAR-EXT. DRIVE	1	19885
23	FLAT WASHER	2	19614
24	MBX1.25 HEX. FLANGE HD. BOLT	4	19708
25	RUBBER CAP	1	19210
26	DRNN PLUG HEX	2	339
27	HEX NUT	1	19730
28	TAPER CAP	1	21321
29	TAPER CAP	1	18459
30	TUBE CONTAINER	1	14120
31	INSERT	4	21325
32	PAD	9	14122

ITEM	DESCRIPTION	QTY	PART NO.
33	SEAL & SEAT ASSY.	ITEMS 17218	15955
34	END PLATE-PIN ASSY	ITEMS 546	18441
35	CAM SCREW & O-RING ASSY	ITEMS 319	19715
36	MINOR SERVICE KIT	ITEMS 17124	21064
37	MAJOR SERVICE KIT	ITEMS 17124	21587
38	VAPOR WRAP	2	19565

(4) INSERT x (16) CELLS/INSERT =
G4 PUMPS/PALLET



(14.3) .563φ
2 HOLES
APPLY SMALL AMOUNT OF
LOCTITE NO 262 TO SHAFT
THREADS. TORQUE TO
50 FT-LB.



(METRIC)

NOTES:
1. TORQUE BOLTS 18 LB-FT.

REV	DESCRIPTION	APPR	DATE	REV	DESCRIPTION	APPR	DATE

UNLESS OTHERWISE SPECIFIED
 CAST DIMENSIONS ± .02
 FILETS & RADI .06
 FINISH STOCK .07
 MACHINING TOLERANCE, INCHES
 XX ± .01, XXX ± .005
 SURFACE ROUGHNESS
 ANGLES ± 0° 30'
 CORNER BREAKS 01 MAX.
 PARALLISM .001
 FLATNESS .001
 SQUARENESS .001
 CONCENTRICITY .001
 ROUNDNESS .002
 RUNOUT .001

SHERWOOD
 A DIVISION OF HYPRO CORPORATION
 8831 E. JEFFERSON AVE. • DETROIT, MICHIGAN 48202

DRAFTSMAN: T.L.G. DATE: 5/2/92 CHECKER: KRS DATE: 5/9/92
 TITLE: RUBBER IMPELLER PUMP
 MATERIAL: SEE DETAILS DWG. NO.: P1722X

PROT.