

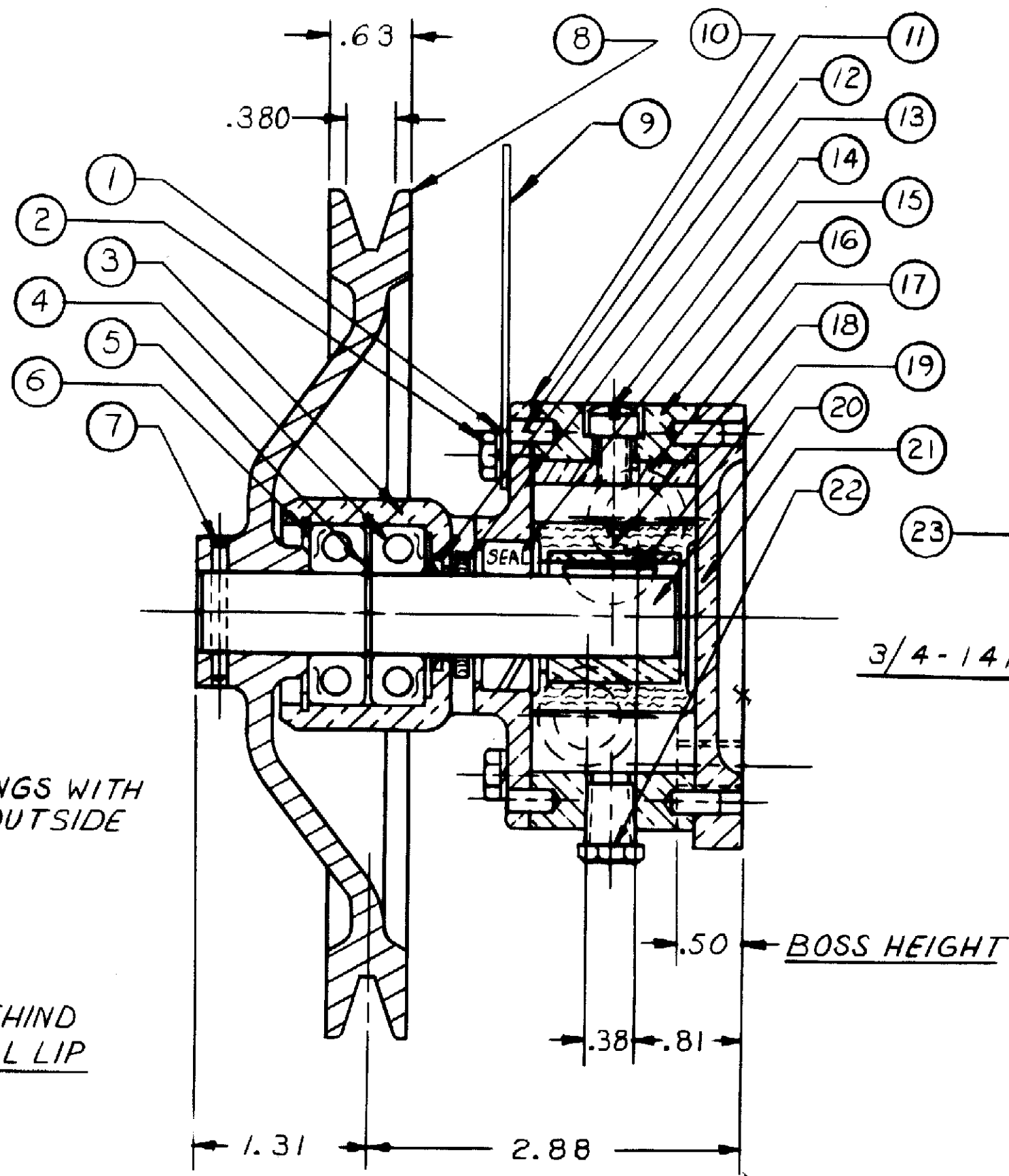
N-10470

PARTS LIST

ITEM	PART NO	DESCRIPTION	QTY	ITEM	PART NO	DESCRIPTION	QTY
1	343	LOCK WASHER	12	16	10499	HOUSING	1
2	8296	HX. HD. SCREW	6	17	10072	CAM	1
3	10509	BODY	1	18	9959	IMPELLER	1
4	4257	BALL BEARING	2	19	4432	Nº9 WOODRUFF KEY	1
5	5328	EXT. RETAIN. RING	1	20	10506	SHAFT	1
6	4259	INT. RETAIN. RING	1	21	10508	COVER	1
7	6809	GROOVE PIN	1	22	336	DRAIN PLUG	2
8	10511	PULLEY	1	23	11132	SCREW	6
9	13285	TAG	1	24	17636	CARTON	1
10	10512	GASKET	2	25	14486	JIFFY BAG	1
11	1311	DOWEL PIN	4	26	12209	LABEL	1
12	10513	OIL SEAL	1	11(4) 16	10507	HOUSING ASS'Y	SERV.
13	9021	SLINGER	1		12250	MAJOR REPAIR KIT	SERV.
14	10515	SCREW	1		12815	MINOR REPAIR KIT	SERV.
15	10514	LIP SEAL	1				

STAMP ASS'Y Nº10470
AND DATE CODE ON
TAG ATTACH WITH
SCREW.

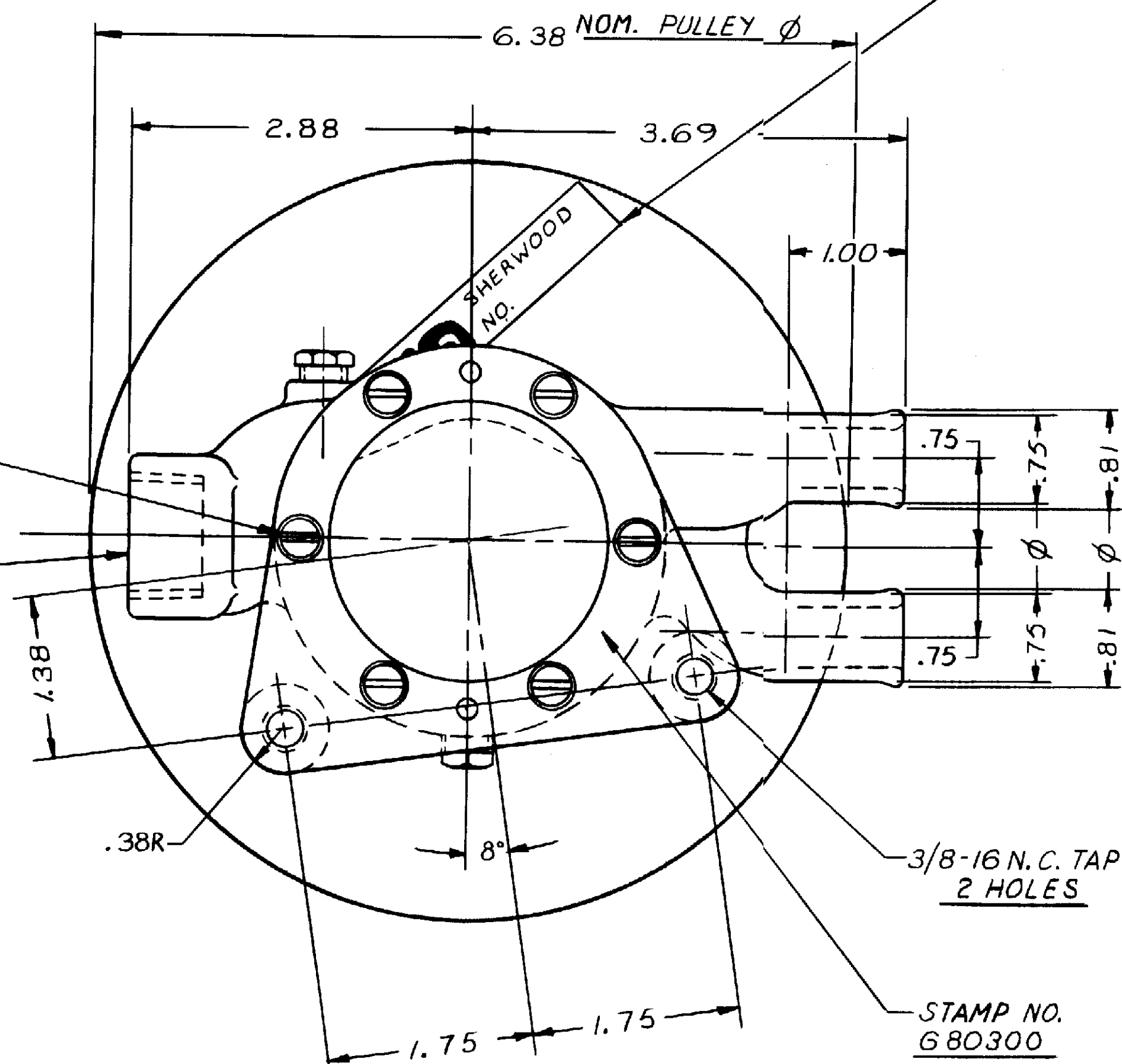
CLOCKWISE ROTATION
(FROM DRIVE END)



ASSEMBLE BEARINGS WITH
SEALS TO THE OUTSIDE
AS SHOWN

GREASE PACK BEHIND
BEARING AT SEAL LIP

CAPACITY
3.0 G.P.M. EACH PORT
@ 1000 R.P.M.



UNLESS OTHERWISE SPECIFIED		SHERWOOD A LEAR SIEGLER COMPANY 6331 E. JEFFERSON AVE. • DETROIT, MICHIGAN 48207	
CAST DIMENSIONS ± .02 FILLETS & RADII .06 FINISH STOCK .07 MACHINING TOLERANCE, INCHES XX ± .01, XXX ± .005 SURFACE ROUGHNESS ANGLES ± 0° 30' CORNER BREAKS .01 MAX. PARALLISM .001 FLATNESS .001 SQUARENESS .001 CONCENTRICITY .001 ROUNDNESS .002 RUNOUT .001		DRAFTSMAN A.V.B. DATE 10-11-60 CHECKER WJF DATE 10-12-60 ASSY NO. 	
J REDRAWN WITHOUT CHANGE REV. DESCRIPTION APPR. DATE		TITLE IMPELLER PUMP ASS'Y MATERIAL SEE DETAILS DWG. NO. N-10470	