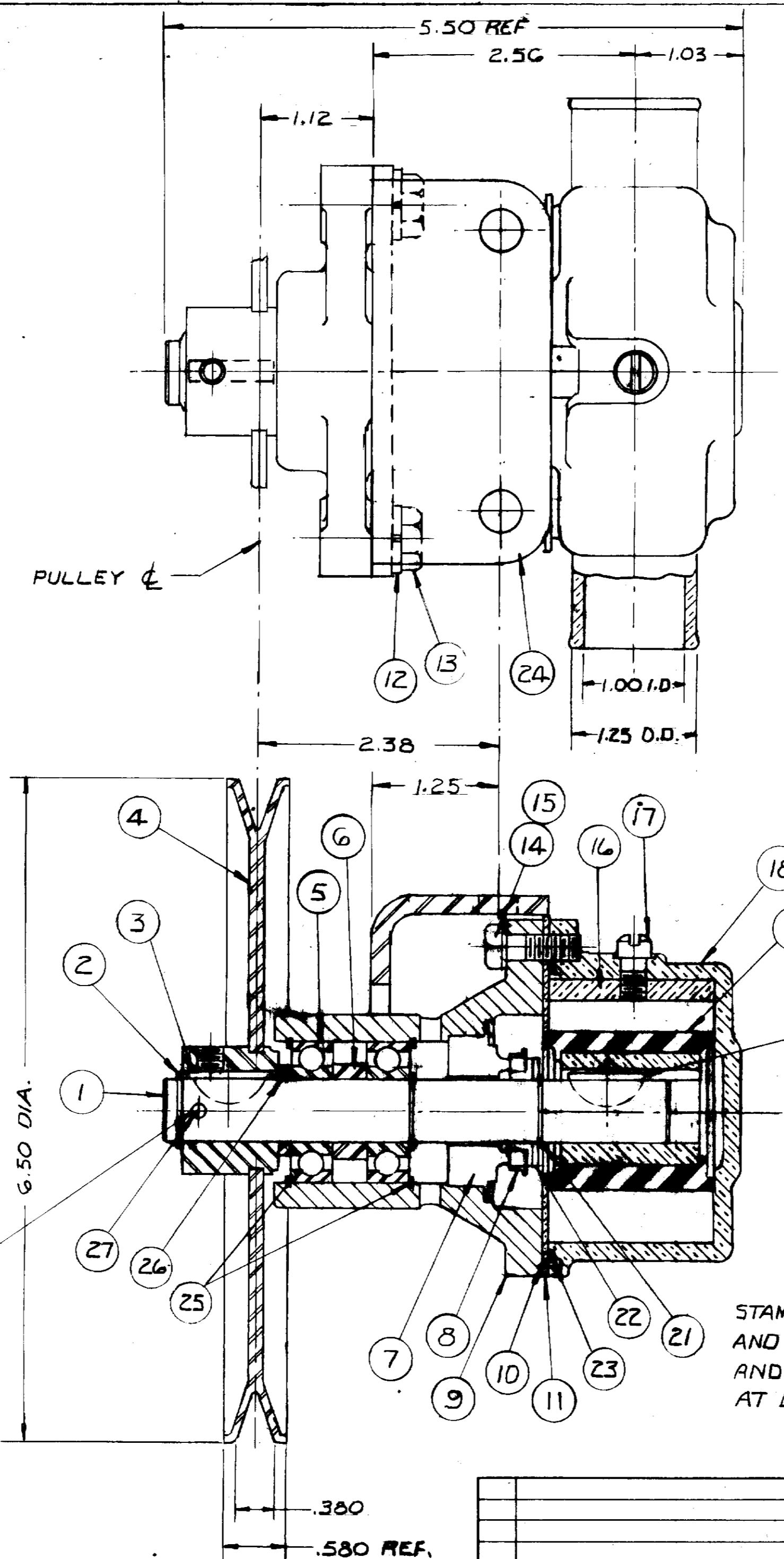
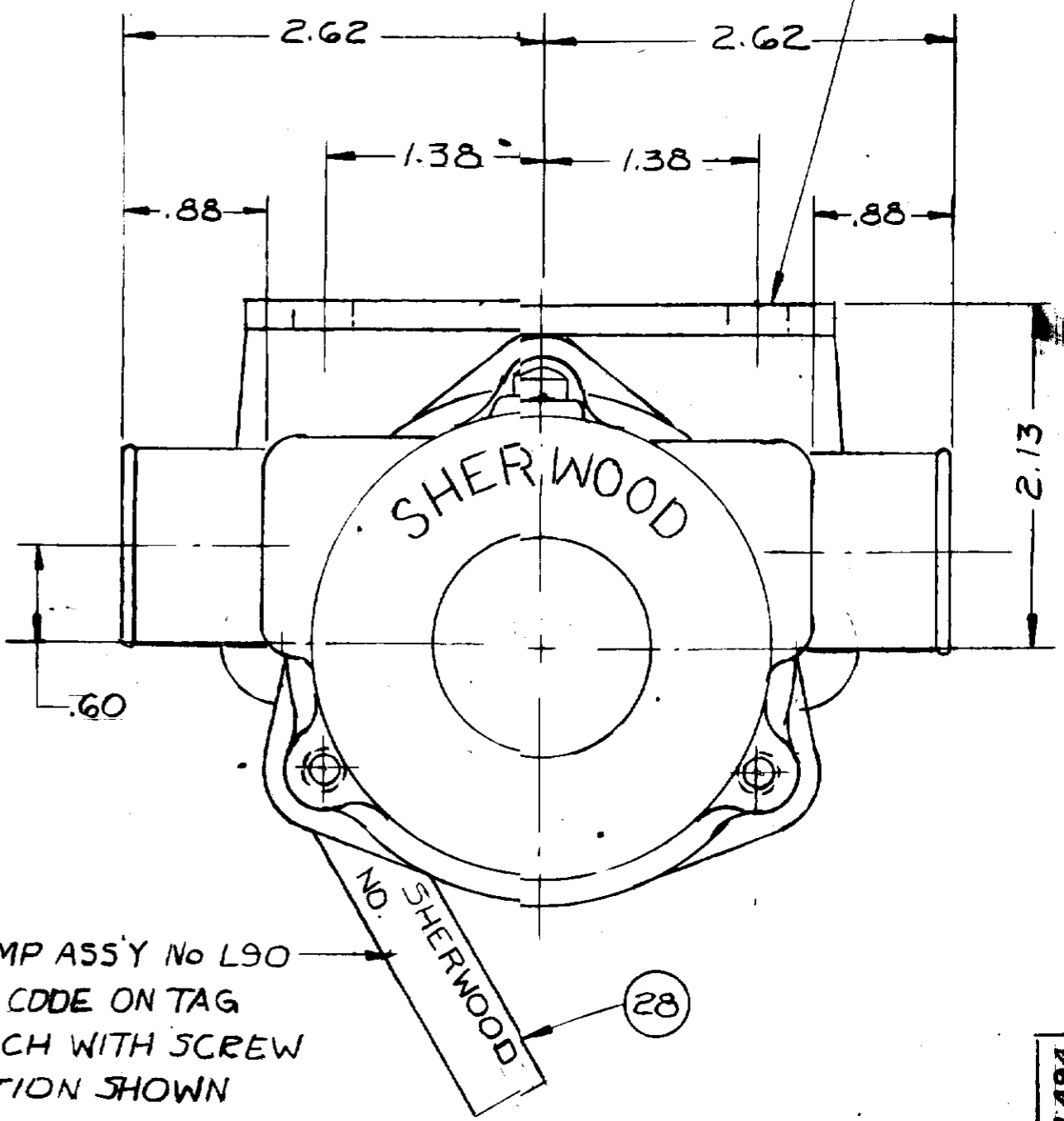


# PARTS LIST

ITEM	PART NO.	DESCRIPTION	REQ'D
1	12233	SHAFT	1
2	12305	RET. RING	1
3	12622	KEY	1
4	12326	PULLEY	1
5	12211	BEARING	2
6	5133	SPACER	1
7	12314	SEAL ASS'Y.	1
8	12256	SEAT ASS'Y.	1
9	12227	BODY	1
10	12855	GASKET	1
11	12856	END PLATE	1
12	4991	LOCKWASHER 3/8	2
13	11633	SCREW 3/8-16 X 3/4 HEX.	2
14	12857	SCREW 1/4-20 X 3/4 HEX	3
15	12710	LOCKWASHER 1/4	3
16	10944	CAM (.188)	1
17	10515	SCREW 1/4-20 X 3/8 FL.	1
18	12228	HOUSING	1
19	10615	IMPELLER	1
20	4452	KEY	1
21	4258	RET. RING EXT.	2
22	4264	THRUST WASHER	1
23	12231	O RING	1
24	12383	MOUNTING BKT.	1
25	4259	RET RING INT.	2
26	12304	SPACER	1
27	11541	PIN	1
28	13228	TAG - PART No.	1
29	17636	CARTON W	1
30	12209	LABEL	1
31	12859	SEAL & SEAT ASSY	SERVICE
32	12794	MAJOR REPAIR KIT	SERVICE
33	12394	MINOR REPAIR KIT	SERVICE



© PACKAGING:  
 N° 11516 PALLET 1 REQ'D  
 14120 TUBE CONTAINER 1 REQ'D  
 14122 PADS 6 REQ'D  
 18025 INSERTS 4 REQ'D  
 25 PUMPS/LAYER X 4 LAYERS = 100 PUMPS  
 PER PALLET  
 UNIT PACKAGING:  
 N° 17636 CARTON W 1 REQ'D  
 12209 LABEL 1 REQ'D



5/32 (.156) DRILL  
 THRU AT ASSEMBLY

STAMP PUMP ASS'Y No L90  
 AND DATE CODE ON TAG  
 AND ATTACH WITH SCREW  
 AT LOCATION SHOWN

FLOW CURVE 71035R - 71036R

REV	DESCRIPTION	APPR	DATE
C	12859 WAS 12322	SH	7/5/70
B	12314 WAS 8388	SH	11-11-86
A	MOUNTING BKT. RELOCATED	RM	2-18-88

UNLESS OTHER VISE SPECIFIED TOLERANCE TO BE			
C	CAST DIMENSION ± .26	M	MACHINED DIMEN ± .04
F	FRACTIONAL ± .010	D	DECIMAL ± .005
A	ANGLES ± 1/2°	M	MACHINED SUR ACE ROUGHNESS
A	ALLOW 1/16 F. OCK ON ALL FINISHED SURFACES FOR MACHINING	B	BREAK ALL SHARP EDGES .010 MAX.
C	CAST FILLETS AND RADI 1/16 R		

<b>SHERWOOD</b> A DIVISION OF HYPRO CORPORATION 6331 E. JEFFERSON AVE. • DETROIT, MICHIGAN 48207				
DRAFTSMAN	DATE	CHECKER	DATE	ASSY NO
RBM	5-1-83			
TITLE PUMP ASSY - RUBBER				
MATERIAL SEE DETAIL				EWG NO L90