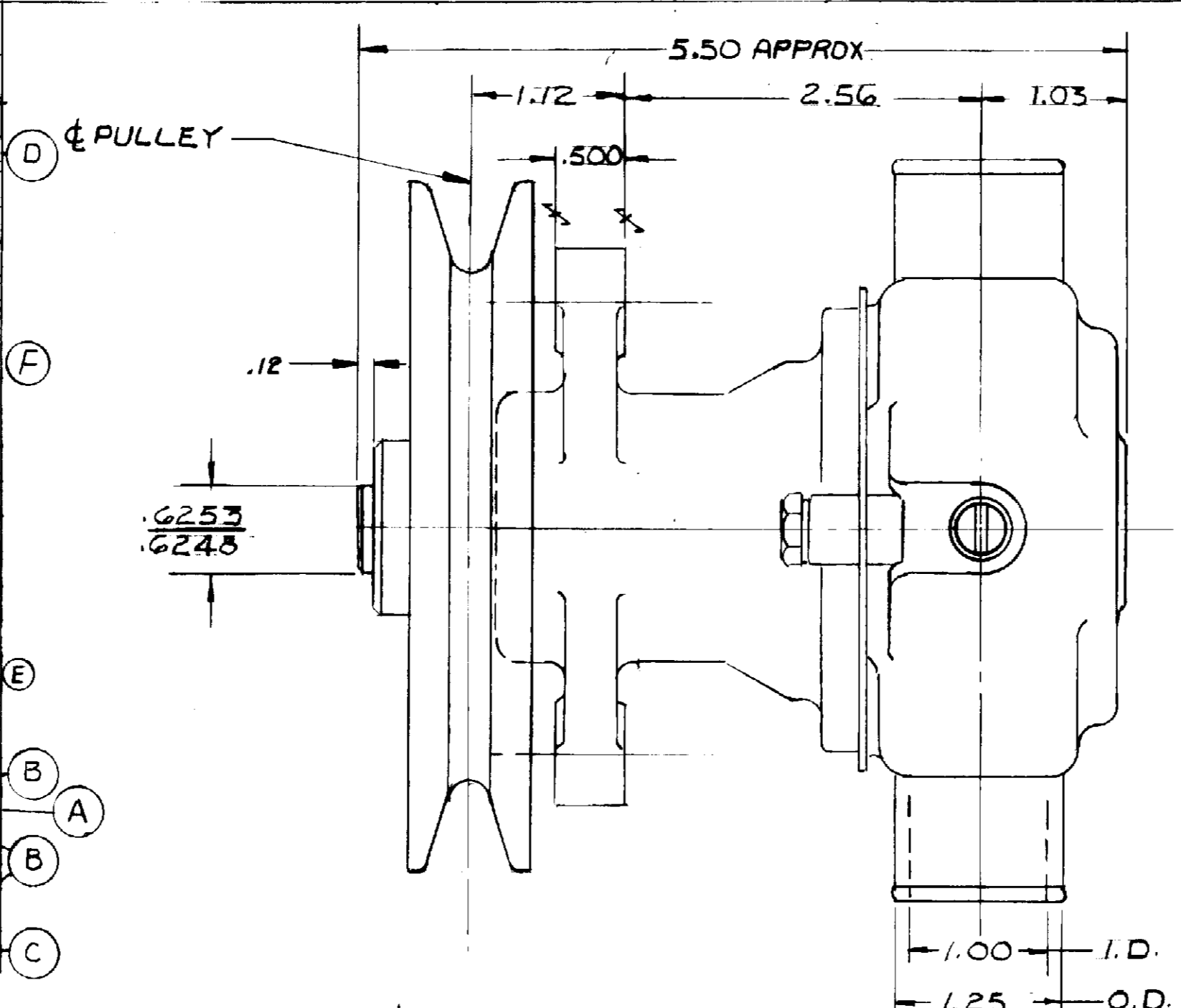


PARTS LIST

ITEM	PART NO.	DESCRIPTION	REQ'D
1	13285	TAG	1
2	4258	RET. RING EXT.	3
3	4259	RET. RING INT.	2
4	12857	SCREW 1/4-20 X 3/4	3
5	12710	LOCKWASHER	3
6	4264	THRUST WASHER	1
7	10515	SCREW	1
8	10944	CAM	1
9	4432	KEY	1
10	10615	IMPELLER	1
11	12228	HOUSING	1
12	12856	END PLATE	1
13	12231	O'RING	1
14	12855	GASKET	1
15	12227	BODY	1
16	12256	SEAT ASSEMBLY	1
17	12314	SEAL ASSEMBLY	1
18	5133	SPACER	1
19	12211	BEARING	2
20			
21	12596	SHAFT	1
22			
23			
24	12859	SEAL & SEAT ASS'Y.	SERVICE
25	14992	PULLEY ASSEMBLY	1

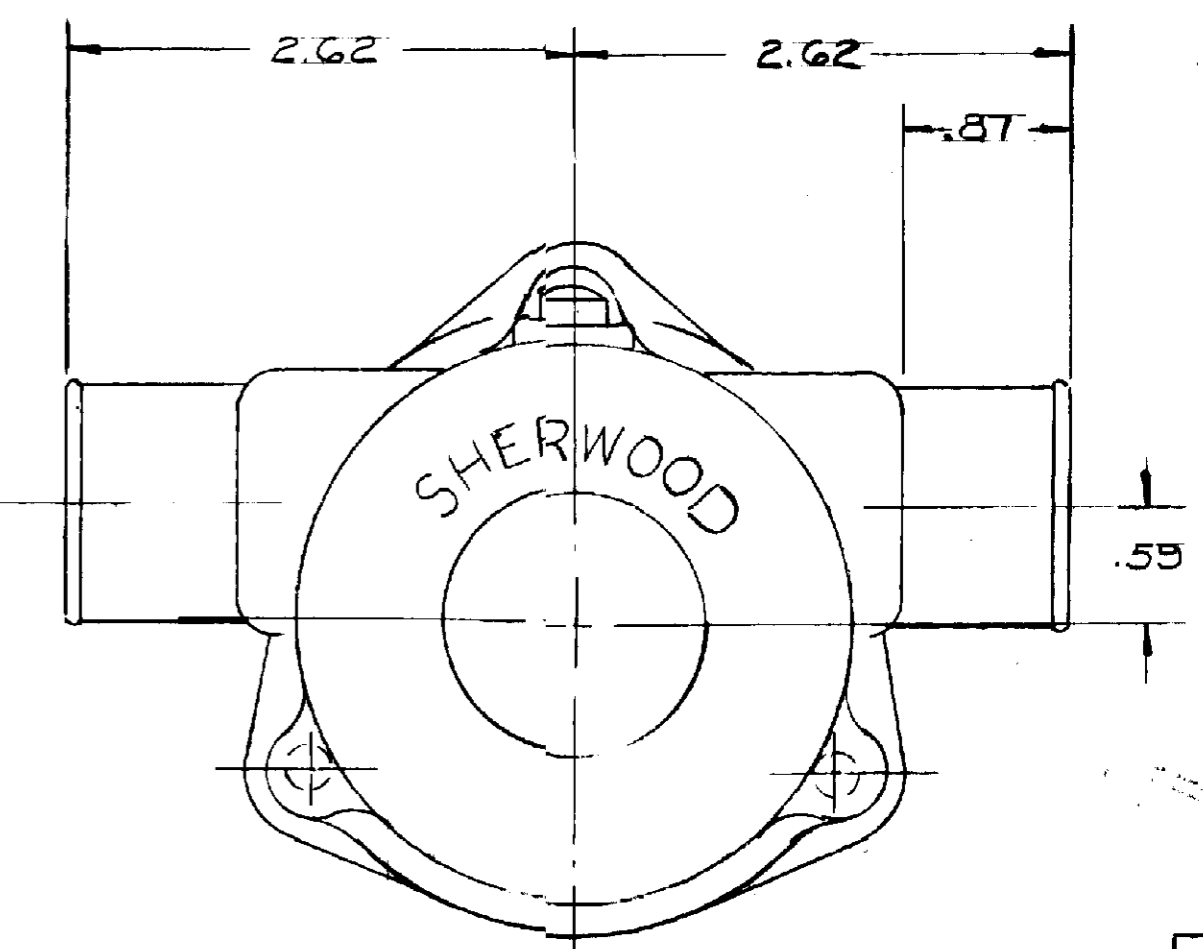
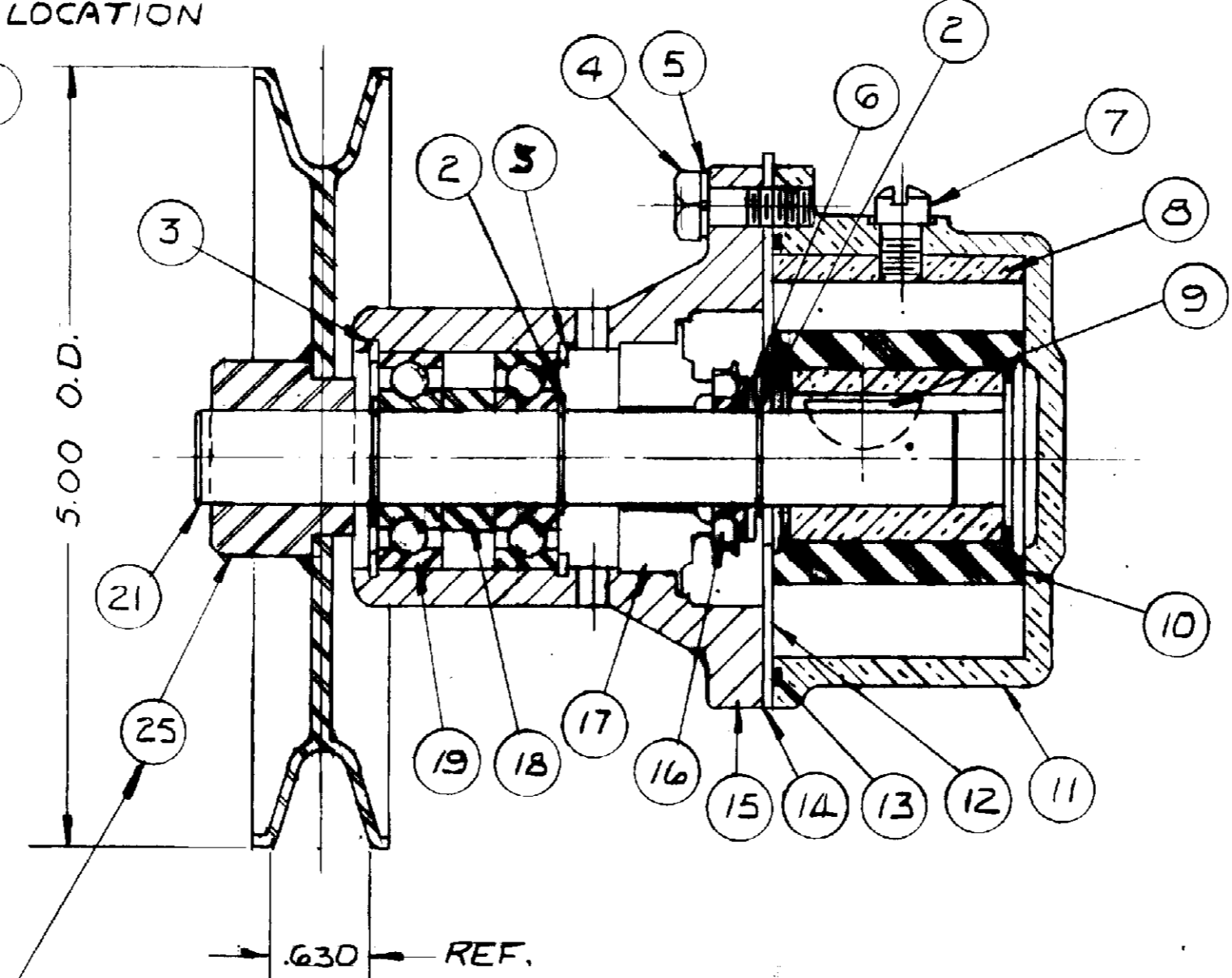
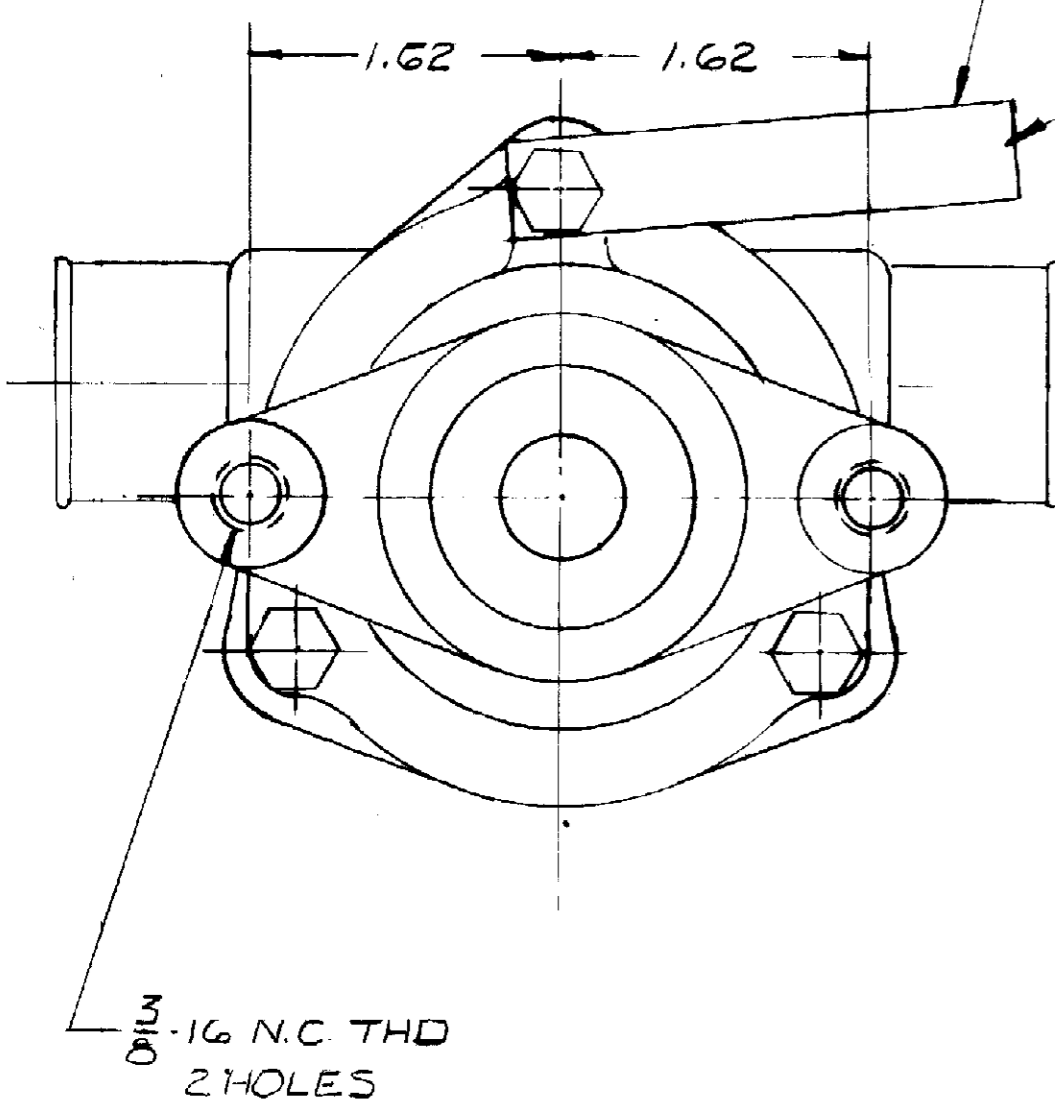


MAJOR REPAIR KIT #13368
MINOR REPAIR KIT #12394

PACKAGING:
No 11516 PALLET 1 REQ'D
14120 TUBE, CONTAINER 1 REQ'D
14122 PADS 6 REQ'D
18025 INSERTS 4 REQ'D
25 PUMPS/LAYER X 4 LAYERS = 100 PUMPS/PALLET

UNIT PACKAGING
No 17636 CARTON W 1 REQ'D
12209 LABEL 1 REQ'D

STAMP PUMP ASS'Y No K90
& DATE CODE ON TAG AND
ATTACH WITH SCREW TO
THIS LOCATION



FLOW CURVE 78006 R.

TO PROVIDE MAXIMUM SHAFT TO PULLEY
BREAK AWAY TORQUE THE SHAFT MUST BE
HELD SQUARE WITH THE PULLEY HUB WHEN
THE ARE PRESSED TOGETHER
SHEARING OF METAL WILL REDUCE BREAKAWAY
TORQUE

REV	DESCRIPTION	APPR	DATE
G	12859 WAS 12322	SH	7/19/90
F	10944 WAS 10961	ML	7/18/90
E	12314 WAS 8388	SH	11-11-88
D	4258 RET. RING ONE ADDED	RM	5-17-88
C	14992 PULLEY ADDED		
B	12228-12622 & 12308 REMOVE		
A	12596 SHAFT WAS 12233		

UNLESS OTHERWISE SPECIFIED
TOLERANCE TO BE
CAST DIMENSION ± .020
MACHINED DIMENSION
FRACTIONAL ± .010
DECIMAL ± .008
ANGLES ± 1/2°
MACHINED SURFACE ROUGHNESS
ALLOW 1/16 STOCK ON ALL FINISHED
SURFACES FOR MACHINING.
BREAK ALL SHARP EDGES 0.10 MAX.
CAST FILLETS NO RADI 1/16 R

SHERWOOD
A DIVISION OF HYDRO CORPORATION
8031 E. JEFFERSON AVE. • DETROIT, MICHIGAN 48207

DRAFTSMAN	LATE	CHECKER	DATE	ASSY NO.
RBM	D-204			

TITLE
PUMP ASSY. - RUBBER IMPELLER

MATERIAL
SEE DETAIL

DWG NO.
K90

PROJ. 419