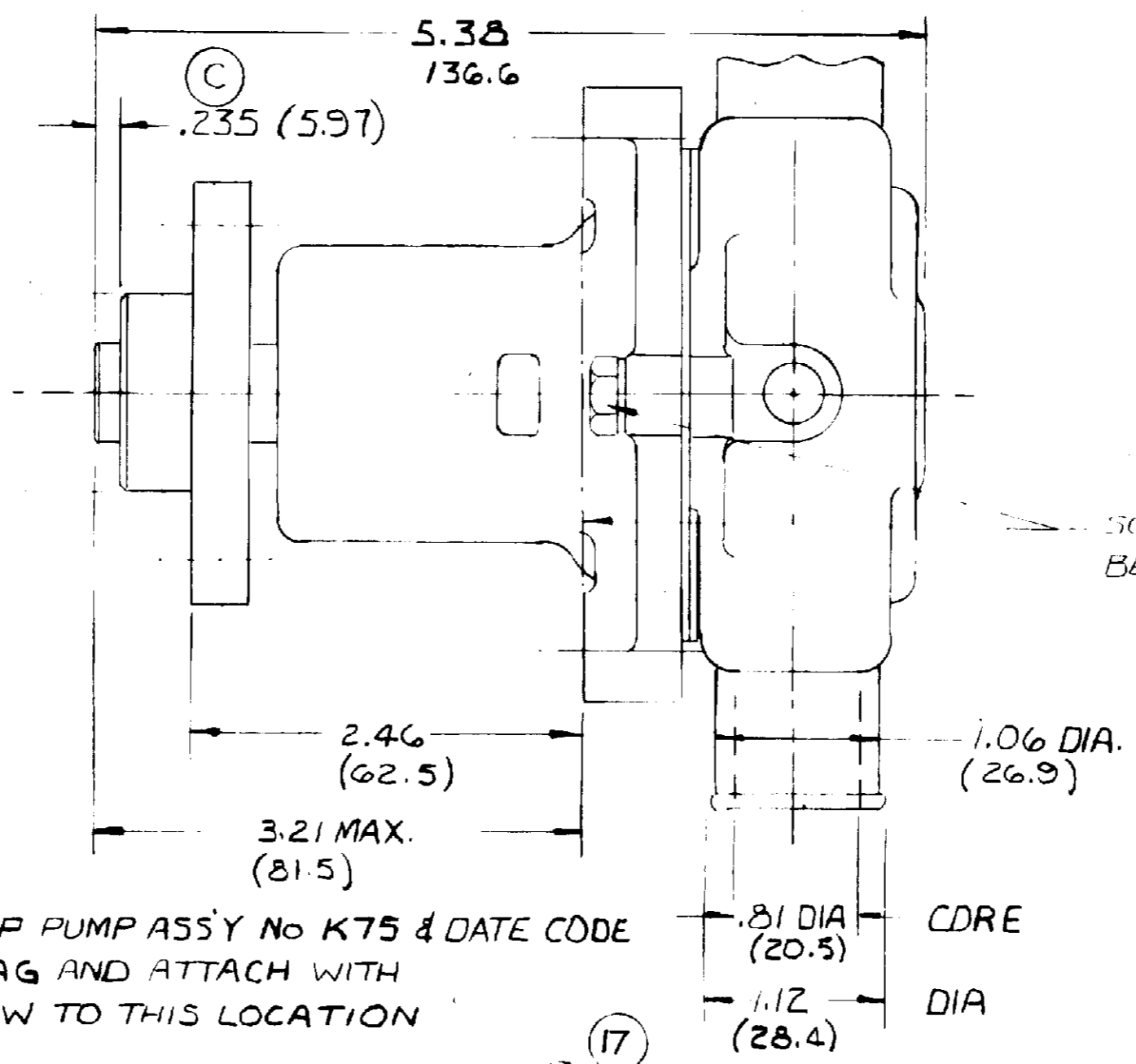


PARTS LIST

ITEM	PART NO.	DESCRIPTION	REQ'D	ONAN No.
1	13363	SHAFT	1	
2	13795	HUB	1	131-0359
3	12211	BEARING	2	
4	5133	SPACER	1	
5	12314	SEAL	1	(D)
6	12256	SEAT	1	
7	13796	BODY (COATED)	1	
8	12855	GASKET	1	
9	12231	O-RING	1	
10	13793	HOUSING	1	
11	4264	WASHER-THRUST	1	
12	4258	RET. RING EXT.	3	
13	4432	KEY-WOODRUFF	1	
14	9959	IMPELLER	1	
15	10627	CAM	1	
16	10515	SCREW 1/4-20 THD	1	
17	12856	END PLATE	1	
18	12710	WASHER LOCK	3	
19	13794	SCREW M6 X 1.00 THD	3	
20	4259	RET. RING INT.	2	
21	13285	TAG-PART NUMBER	1	
22	12322	SEAL & SEAT ASS'Y	SERVICE	
23	13966	MAJOR REPAIR KIT	SERVICE	
24	13967	MINOR REPAIR KIT	SERVICE	132-0276

31.9684  
 DIA (31.9100)  
 1.2586  
 1.2563



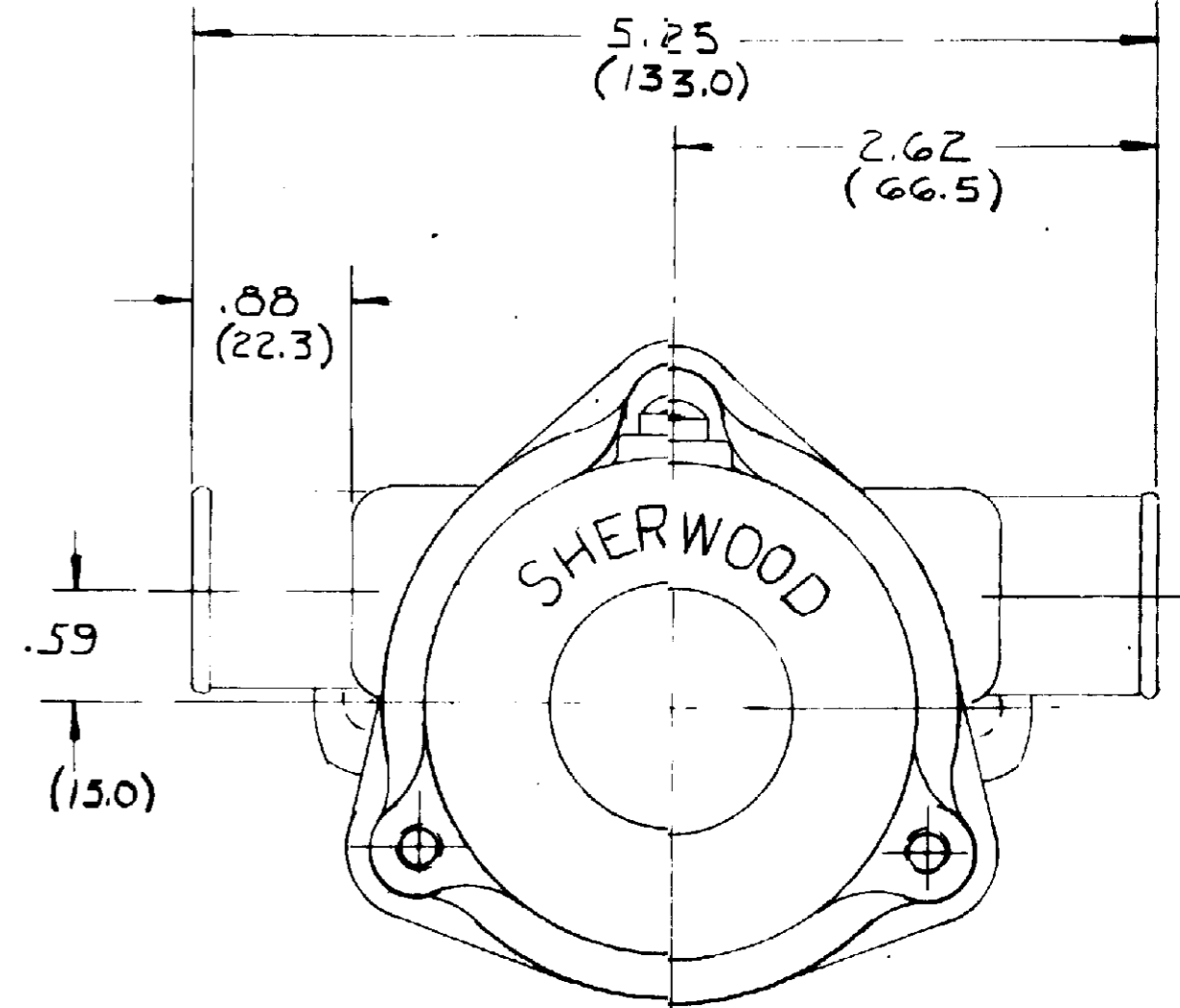
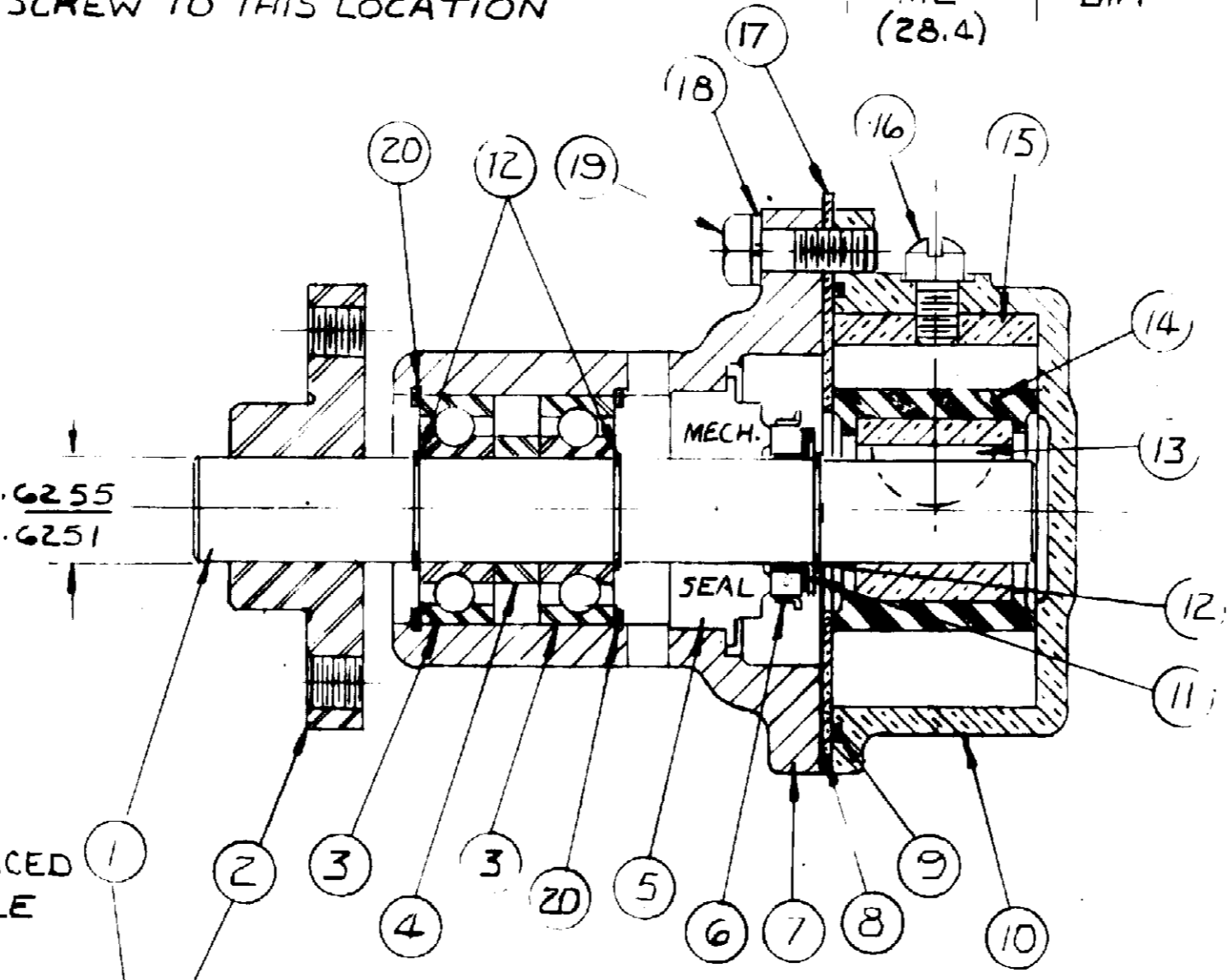
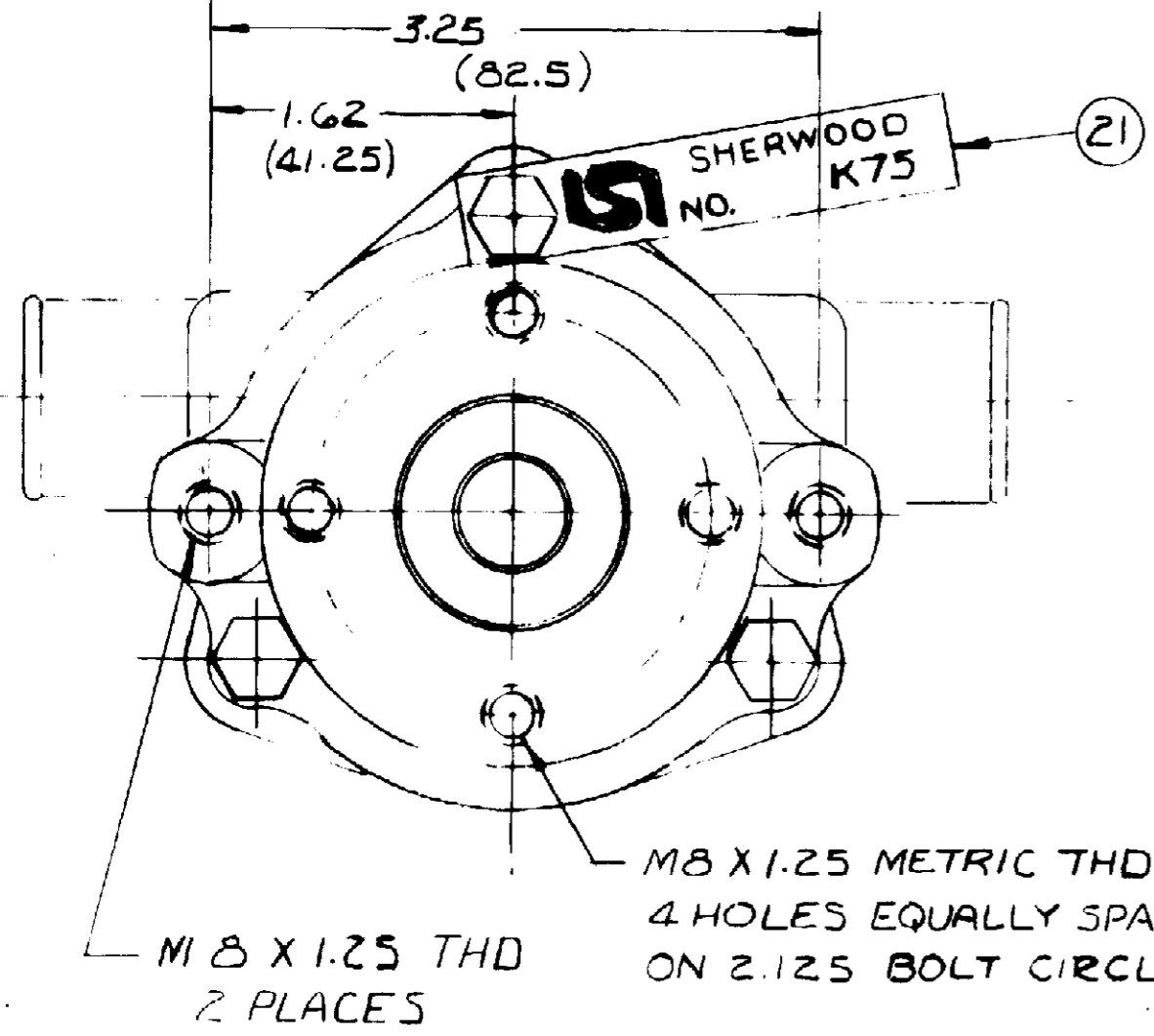
SHIP PUMP ASSEMBLIES TO THE CUSTOMER  
 IN A NUMBER 11 CARTON (WITH INSERTS)  
 16 PUMPS TO A CARTON

PACKAGING

No 17659	CARTON Y	1	REQ'D
12209	LABEL	1	REQ'D
14486	JIFFY BAG	1	REQ'D

STAMP PUMP ASS'Y No K75 & DATE CODE  
 ON TAG AND ATTACH WITH  
 SCREW TO THIS LOCATION

SCREW HEADS MUST NOT PROTRUDE  
 BEYOND THIS LINE



ONAN CORP No 132-0275

TO PROVIDE MAXIMUM SHAFT TO HUB  
 BREAK AWAY TORQUE THE SHAFT  
 MUST BE HELD SQUARE WITH THE  
 PULLEY HUB WHEN THEY ARE PRESSED  
 TOGETHER. SHEARING OF METAL WILL  
 REDUCE BREAK AWAY TORQUE

FLOW CURVE 72010R - 72011R

UNLESS OTHERWISE SPECIFIED TOLERANCE TO BE		<b>SHERWOOD</b> A DIVISION OF HYPOCORP 6801 E. JEFFERSON AVE. - DENVER, CO. 80231	
CAST DIMENSION ± .020 MACHINED DIMENSION FRACTIONAL ± 0:0 DECIMAL ± .005 ANGLES ± 1/2°			
MACHINED SURFACE ROUGHNESS ALLOW 1/16 STOCK ON ALL FINISHED SURFACES FOR MACHINING BREAK ALL SHARP EDGES .010 MAX. CAST FILLETS AND RADI 1/16 R		DRAFTSMAN RM 4-26-84	
TITLE PUMP ASSEMBLY		DATE 4-26-84	
MATERIAL SEE DIMENLS		DWG NO. K75	

REV.	DESCRIPTION	APPR.	DATE
D	12314 WAS 8388	SH	11-11-84
C	.235 WAS .150	RM	1-13-84
A	ONAN 132-0275 WAS 131-0360	RM	4-26-84
A	REPAIR BOLTS ADDED	RM	4-26-84