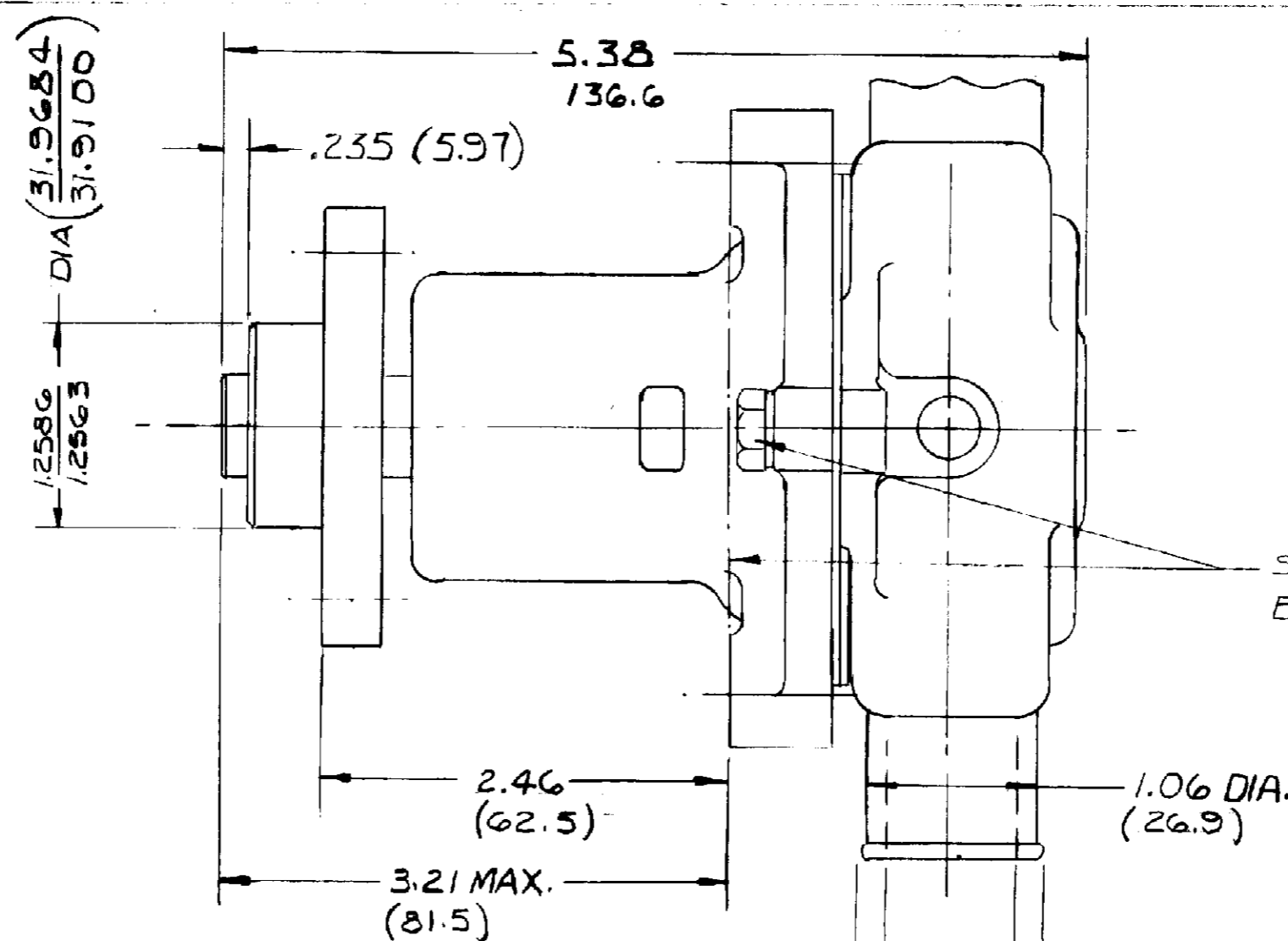


PARTS LIST

ITEM	PART NO.	DESCRIPTION	REQ'D	ONAN No.
1	13363	SHAFT	1	
2	13795	HUB	1	131-0359
3	12211	BEARING	2	
4	5133	SPACER	1	
5	12314	SEAL	1	
6	12256	SEAT	1	
7	19948	BODY (BRASS)	1	
8	12855	GASKET	1	
9	12231	O'RING	1	
10	13793	HOUSING	1	
11	4264	WASHER-THRUST	1	
12	4258	RET. RING EXT.	3	
13	4432	KEY-WOODRUFF	1	
14	9959	IMPELLER	1	
15	10627	CAM	1	
16	10515	SCREW 1/4-20 THD	1	
17	12856	END PLATE	1	
18	12710	WASHER LOCK	3	
19	13794	SCREW M6X1.00 THD	3	
20	4259	RET. RING INT.	2	
21	13285	TAG-PART NUMBER	1	
22	12322	SEAL & SEAT ASS'Y	SERVICE	
23	13966	MAJOR REPAIR KIT	SERVICE	
24	13967	MINOR REPAIR KIT	SERVICE	132-0276



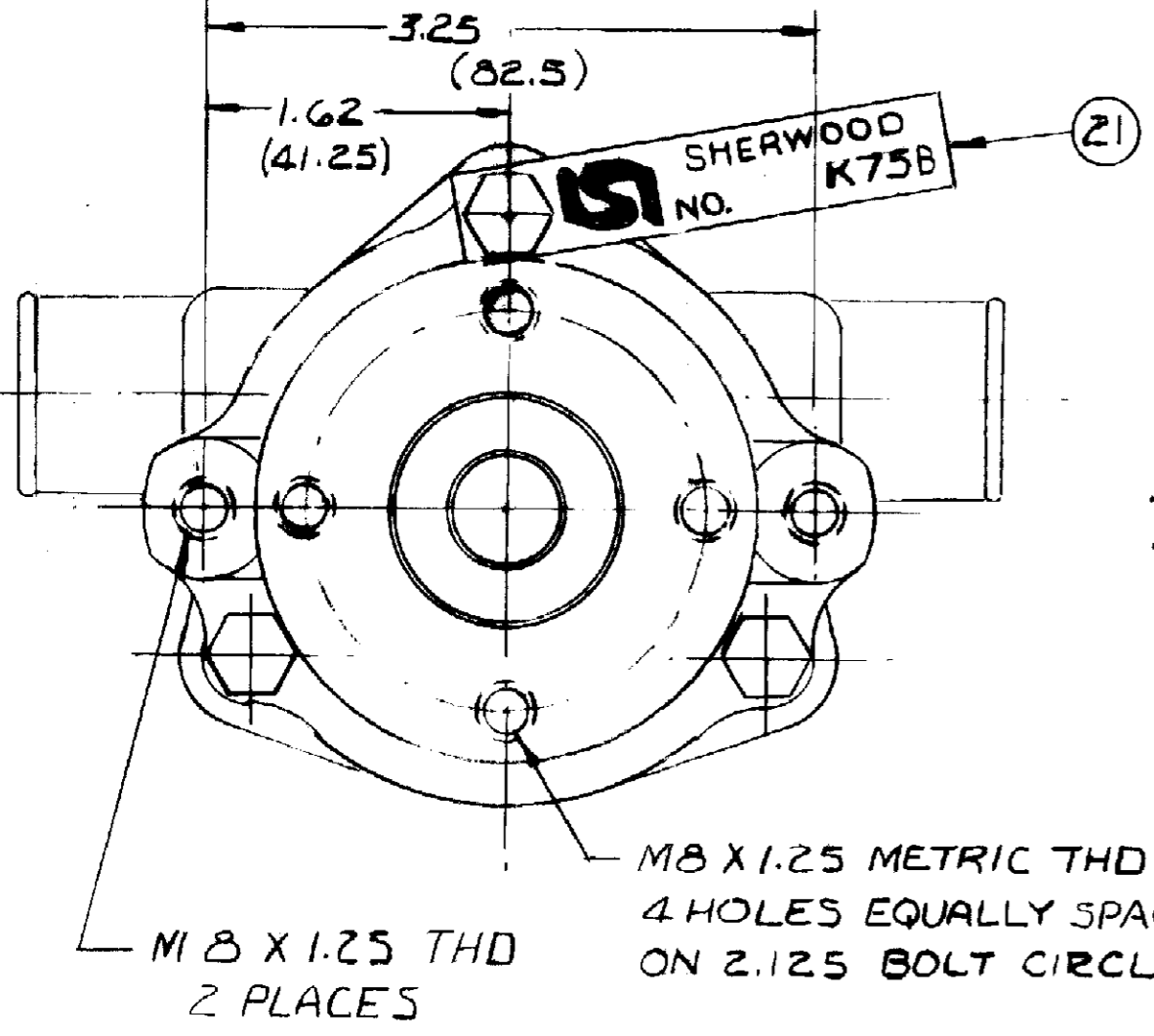
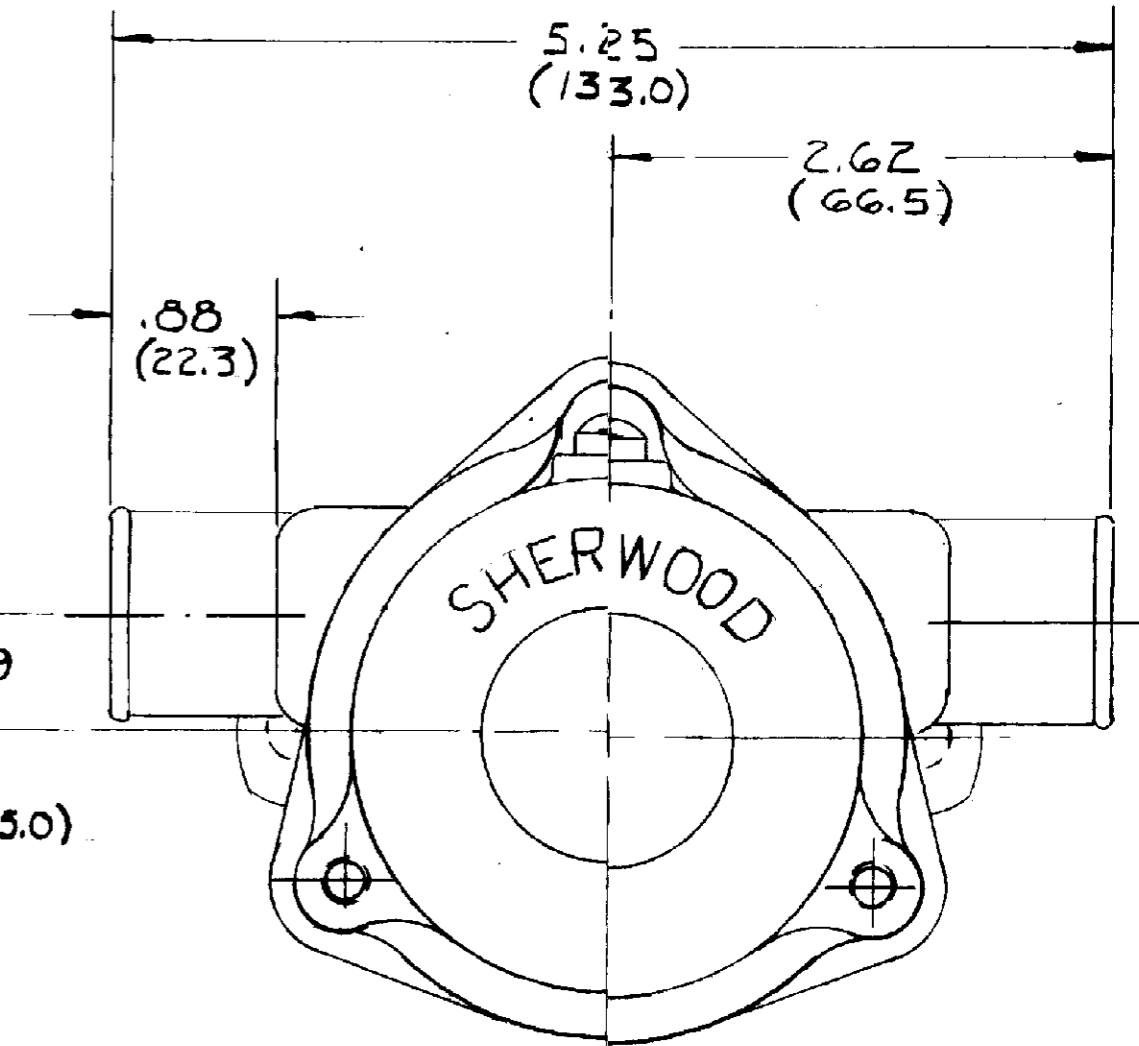
SHIP PUMP ASSEMBLIES TO THE CUSTOMER IN A NUMBER 11 CARTON (WITH INSERTS) 16 PUMPS TO A CARTON

SCREW HEADS MUST NOT PROTRUDE BEYOND THIS LINE

PACKAGING:

No 17659	CARTON Y	1	REQ'D
12209	LABEL	1	REQ'D
14486	JIFFY BAG	1	REQ'D

STAMP PUMP ASS'Y No K75-B & DATE CODE ON TAG AND ATTACH WITH SCREW TO THIS LOCATION



M8 X 1.25 METRIC THD 4 HOLES EQUALLY SPACED ON 2.125 BOLT CIRCLE

M8 X 1.25 THD 2 PLACES

TO PROVIDE MAXIMUM SHAFT TO HUB BREAK AWAY TORQUE THE SHAFT MUST BE HELD SQUARE WITH THE PULLEY HUB WHEN THEY ARE PRESSED TOGETHER. SHEARING OF METAL WILL REDUCE BREAK AWAY TORQUE

ONAN CORP No 132-0275

FLOW CURVE 72010R - 72011R

UNLESS OTHERWISE SPECIFIED TOLERANCE TO BE		SHERWOOD	
CAST DIMENSION ± .020		A DIVISION OF HYDRO CORPORATION	
MACHINED DIMENSION		6331 E. JEFFERSON AVE. • DENVER, COLORADO 80221	
FRACTIONAL ± 0.0		DRAWN	DATE
DECIMAL ± .005		KB	3-6-92
ANGLES ± 1/2°		CHECKER	DATE
MACHINED SURFACE ROUGHNESS		TLG	5-19-92
ALLOW 1/16 STOCK ON ALL FINISHED SURFACES FOR MACHINING		TITLE	
BREAK ALL SHARP EDGES 010 MAX		PUMP ASSEMBLY	
CAST, FILLETS AND RADII 1/16 R		MATERIAL	DWG NO.
		SEE DETAILS K75-B	