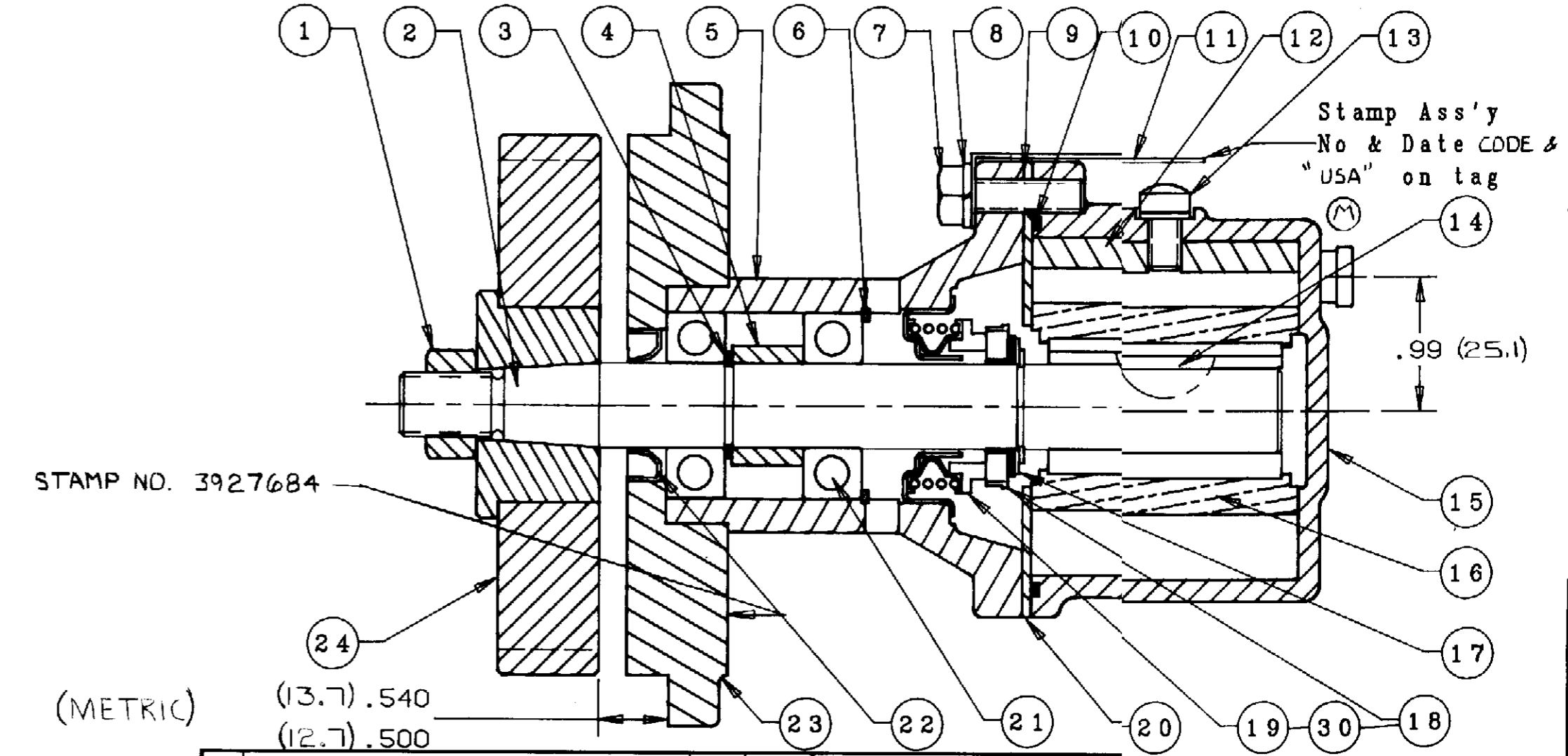
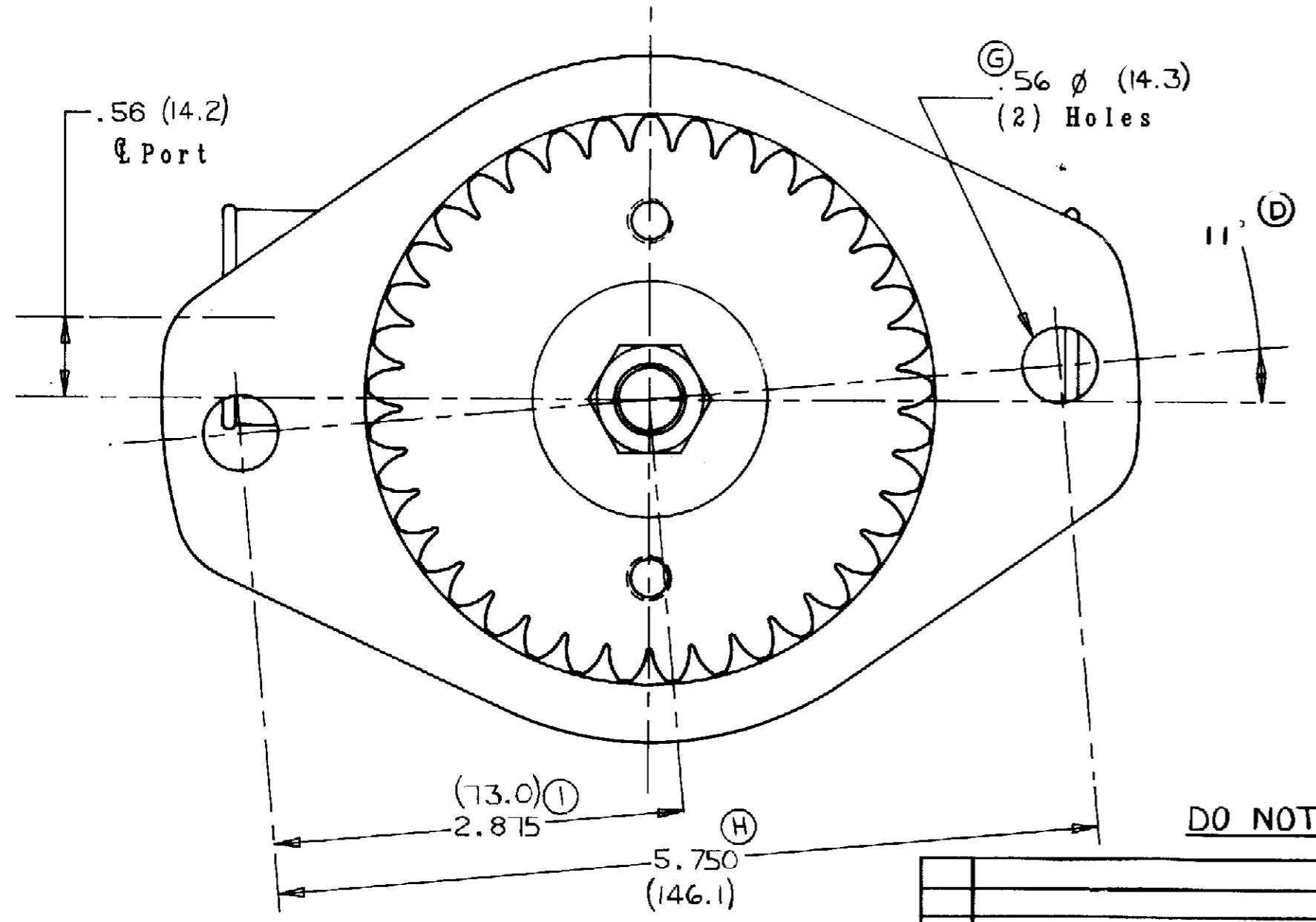
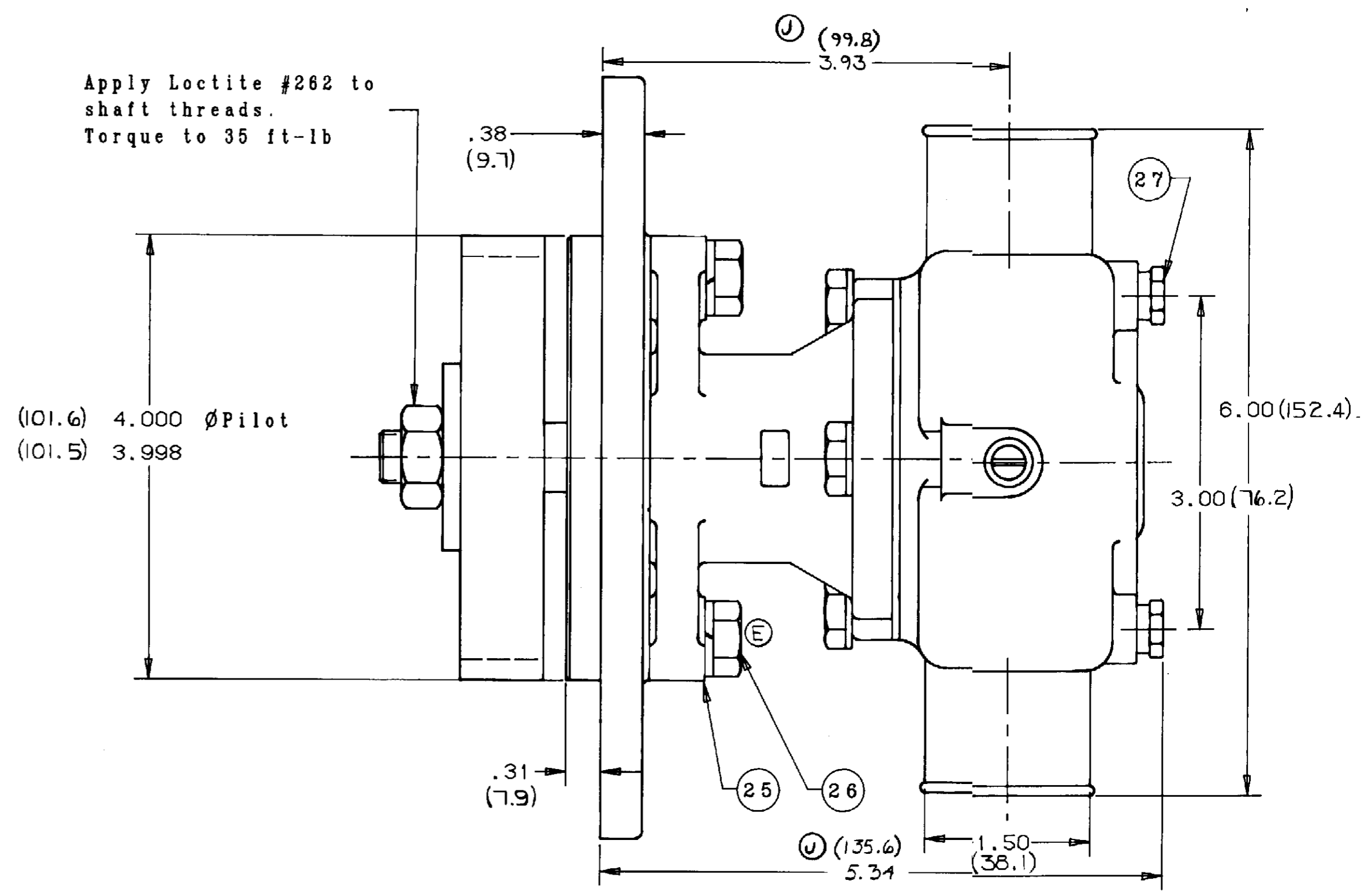


PARTS LIST

ITEM	PART No.	DESCRIPTION	QTY
1	19883	M12 Hex Nut	1
2	19843	Shaft	1
3	4258	Ext. Ret. Ring	2
4	19906	Spacer	1
5	19907	Body	1
6	4259	Int. Ret. Ring	1
7	12857	1/4 Hex Hd. Bolt	3
8	12710	1/4 Lockwasher	3
9	12855	Gasket	1
10	12231	O-ring	1
11	13285	Tag	1
12	18398	Cam	1
13	10515	Cam Screw	1
14	4432	Woodruff Key	1
15	21835	Housing	1
16	15000	Impeller	1
17	4264	Flat Washer	1
18	12256	Seal Seat	1
19	12314	Mech. Seal	1
20	12856	End Plate	1
21	12211	Ball Bearing	2
22	10514	Lip Seal	1
23	21700	Mounting Adaptor	1
24	19884	Ext Drive Gear	1
25	4991	3/8 Lockwasher	2
26	14163	3/8 Hex Hd. Bolt	2
27	336	Hex Drain Plug	2
28	21086	Min. Serv. Kit	SERVICE
29	21073	Maj. Serv. Kit	SERVICE
30	12859	Seal & Seat Ass'y	SERVICE

Apply Loctite #262 to shaft threads.
Torque to 35 ft-lb



DO NOT SCALE

(CUMMINS No 3927684)

J	WAS 3.68 AND 5.09	TLG 2-3-74	UNLESS OTHERWISE SPECIFIED	SHERWOOD A DIVISION OF HYPRO CORPORATION 6331 E. JEFFERSON AVE. • DETROIT, MICHIGAN 48207
I	WAS 2.883	K.W. 12-8-93	CAST DIMENSIONS : 02	
H	WAS 5.767	K.W. 12-8-93	FILLETS & RADII .06	DRAFTSMAN
G	WAS .53 Ø	K.W. 12-8-93	FINISH STOCK 07	DATE
F	ADDED METRIC ON ALL DIM ()	K.W. 12-8-93	MACHINING TOLERANCE, INCHES	CHECKER
E	REMOVED LOCTITE APPLICATION	K.W. 12-8-93	XX ± .01, XXX ± .005	DATE
D	WAS 5°	TLG 8-26-78	SURFACE ROUGHNESS	ASSY NO
C	WAS 18314	TLG 8-3-93	ANGLES 1° 30'	
B	WAS 1857D LIP SEAL	DA 8-3-93	CORNER BREAKS 01 MAX.	
A	WAS 18398	GM 10-6-90		
N	WAS 21480	TLG 5-21-76	FLATNESS .0015 IN/IN	
M	ADDED USA ON TAG	TLG 2-27-76	SQUARENESS .0015	
L	WAS 17684	TLG 10-10-94	CONCENTRICITY .002	
K	WAS 19911	TLG 8-23-94	ROUNDNESS .0005	
REV	DESCRIPTION	APPR	RUNOUT .002	

TITLE RUBBER IMPELLER PUMP ASS'Y				
MATERIAL		DWG. NO.		
SEE DETAILS		GC5		

PROJ. NO. 1062

QWTER BLUEPRINT CO. 550721