

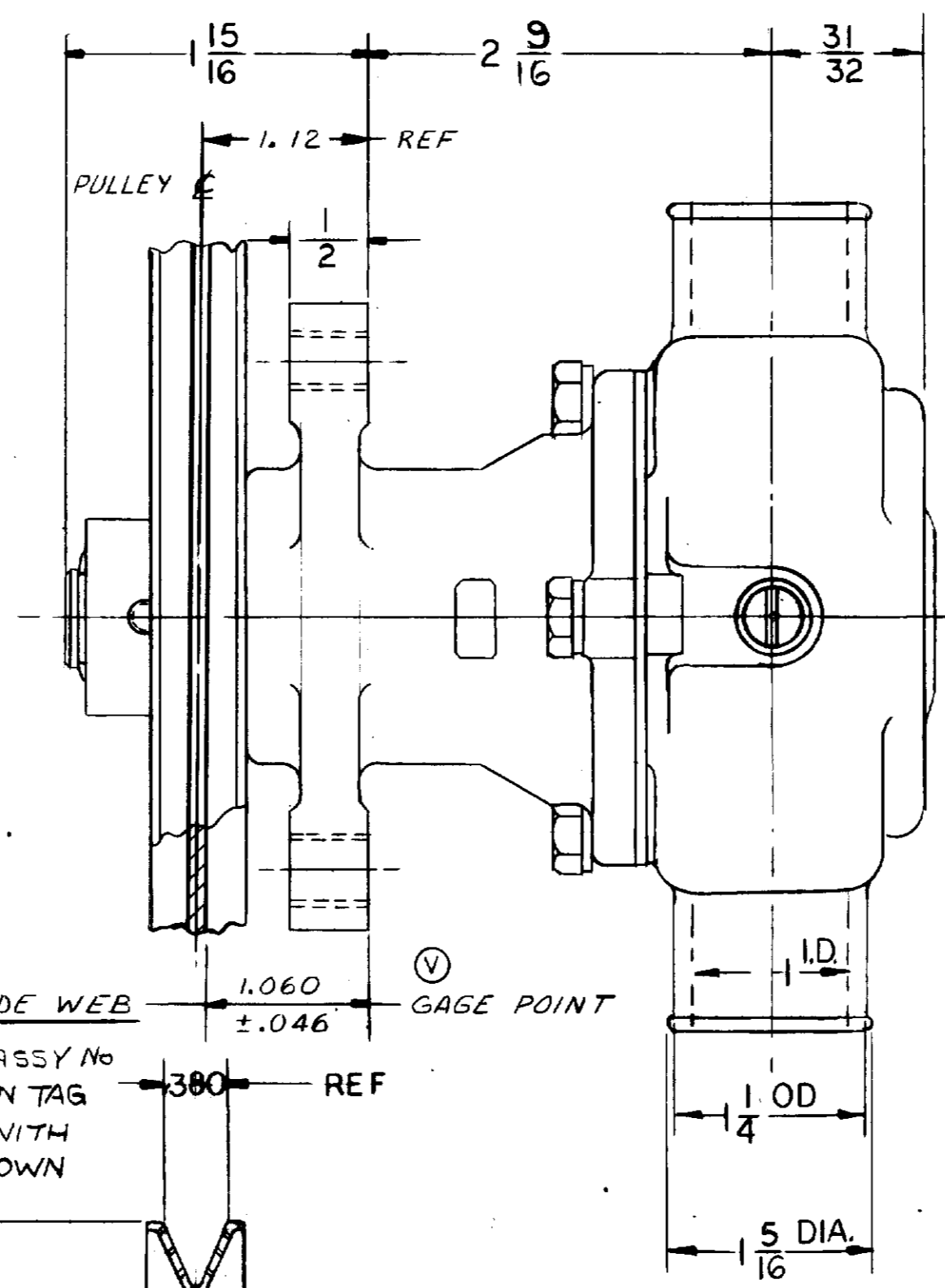
PARTS LIST			
ITEM	PART NO	DESCRIPTION	REQ'D
1	12304	SPACER	1
2	4259	RET. RING	2
3	4258	RET. RING	2
4	12857	CAPSCREW 1/4-20X 7/8	3
5	P-12710	LOCKWASHER	3
6	12228	HOUSING	1
7	12231	O RING GASKET	1
8	10515	SCREW	1
9	10944	CAM	1
10	4432	DRIVE KEY	1
11	12233	SHAFT	1
12	10615	IMPELLER	1
13	4264	THRUST WASHER	1
14	12856	END PLATE	1
15	12227	BODY	1
16	12256	SEAL SEAT	1
17	12314	MECH. SEAL	1
18	12211	BALL BRG.	2
19	5133	SPACER BRG.	1
20	12622	NON-ROK KEY	1
21	12305	RET. RING	1
22	12326	PULLEY ASS'Y	1
23	12855	GASKET	1
24	11541	PIN	1
25	13285	TAG	1

SERVICE KIT		
KIT	PART NO	ITEM NOS
SEAL & SEAT	12859	16(1) & 17(1)
MAJOR REPAIR KIT #12794		
MINOR REPAIR KIT #12394		

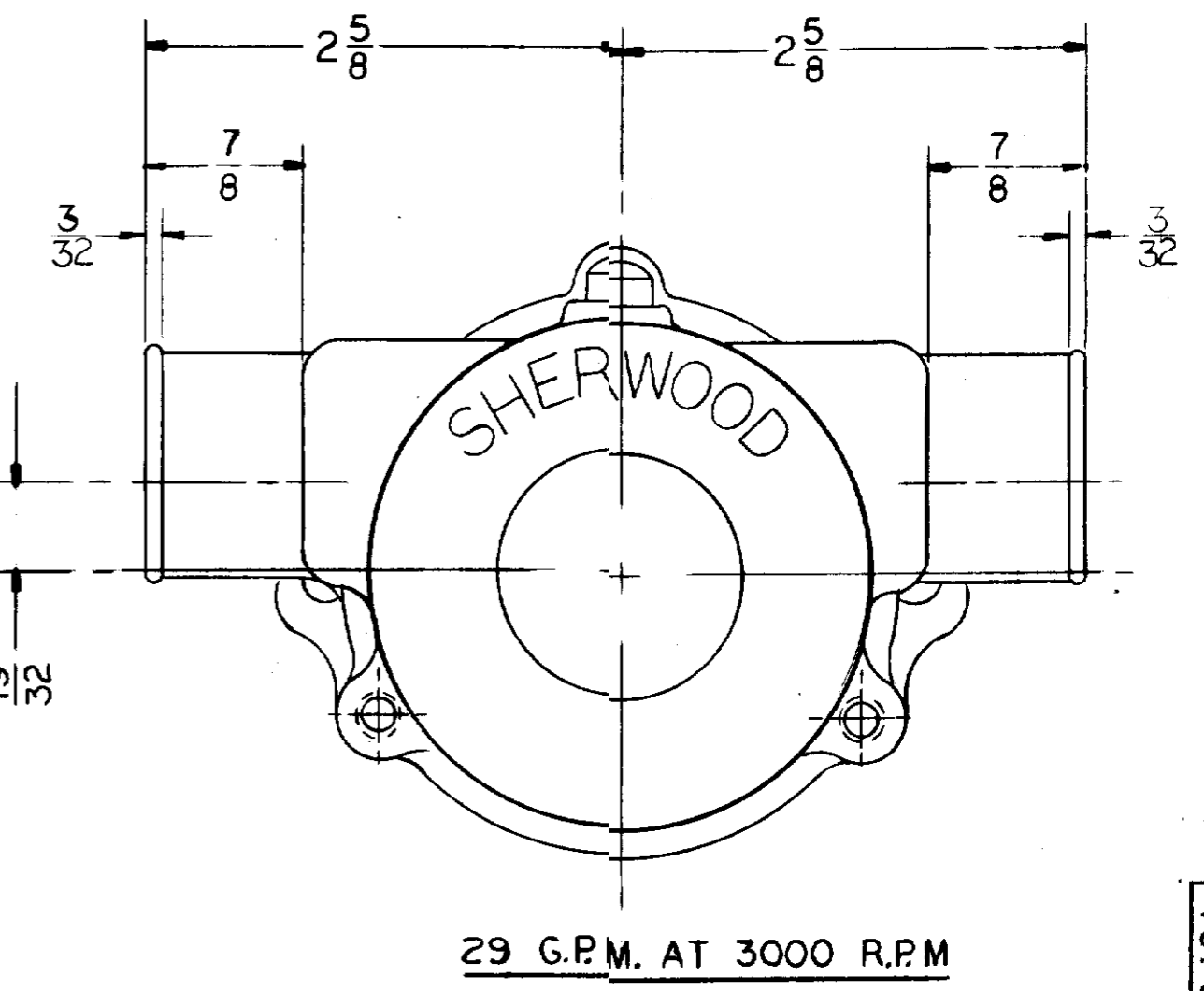
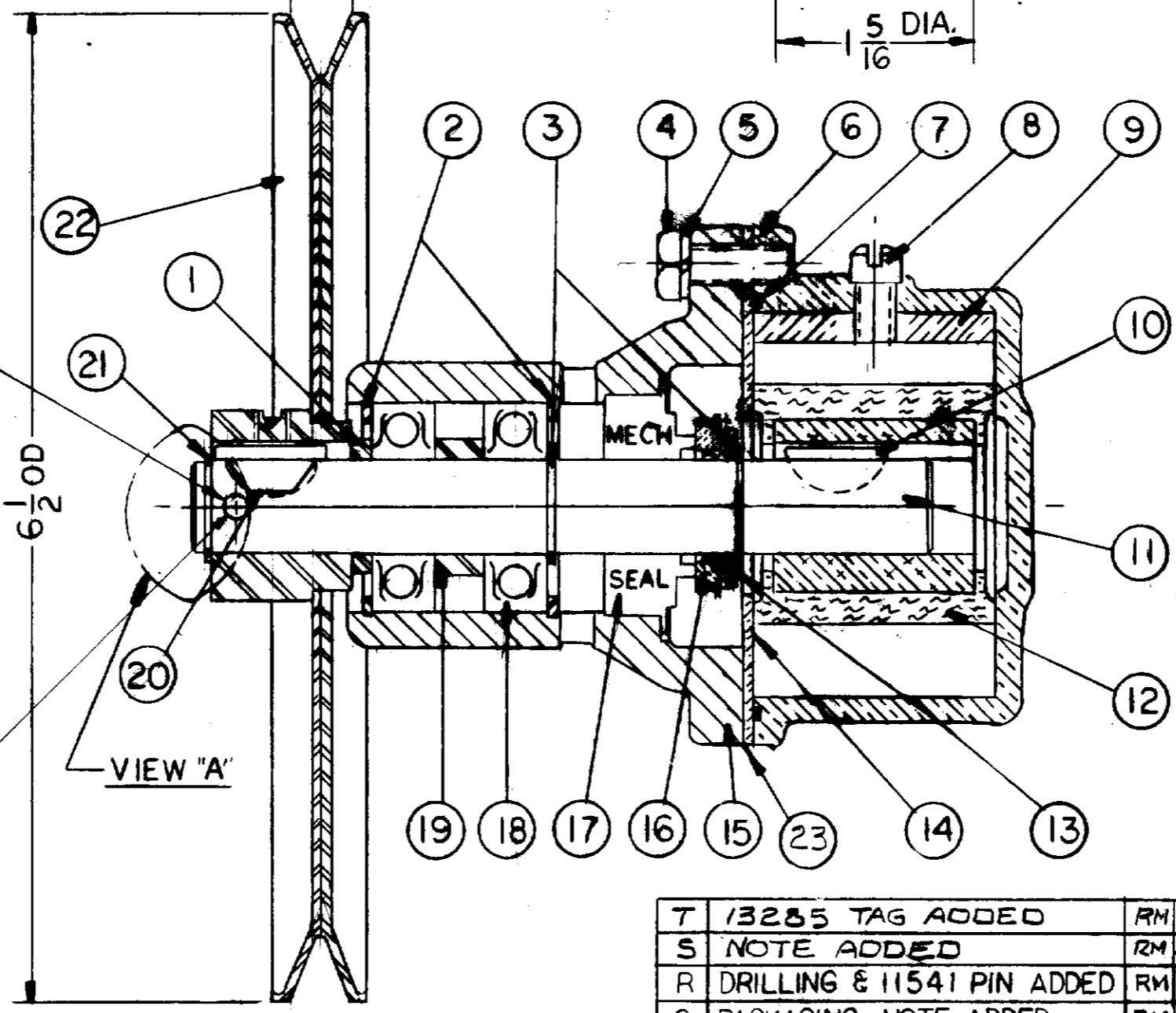
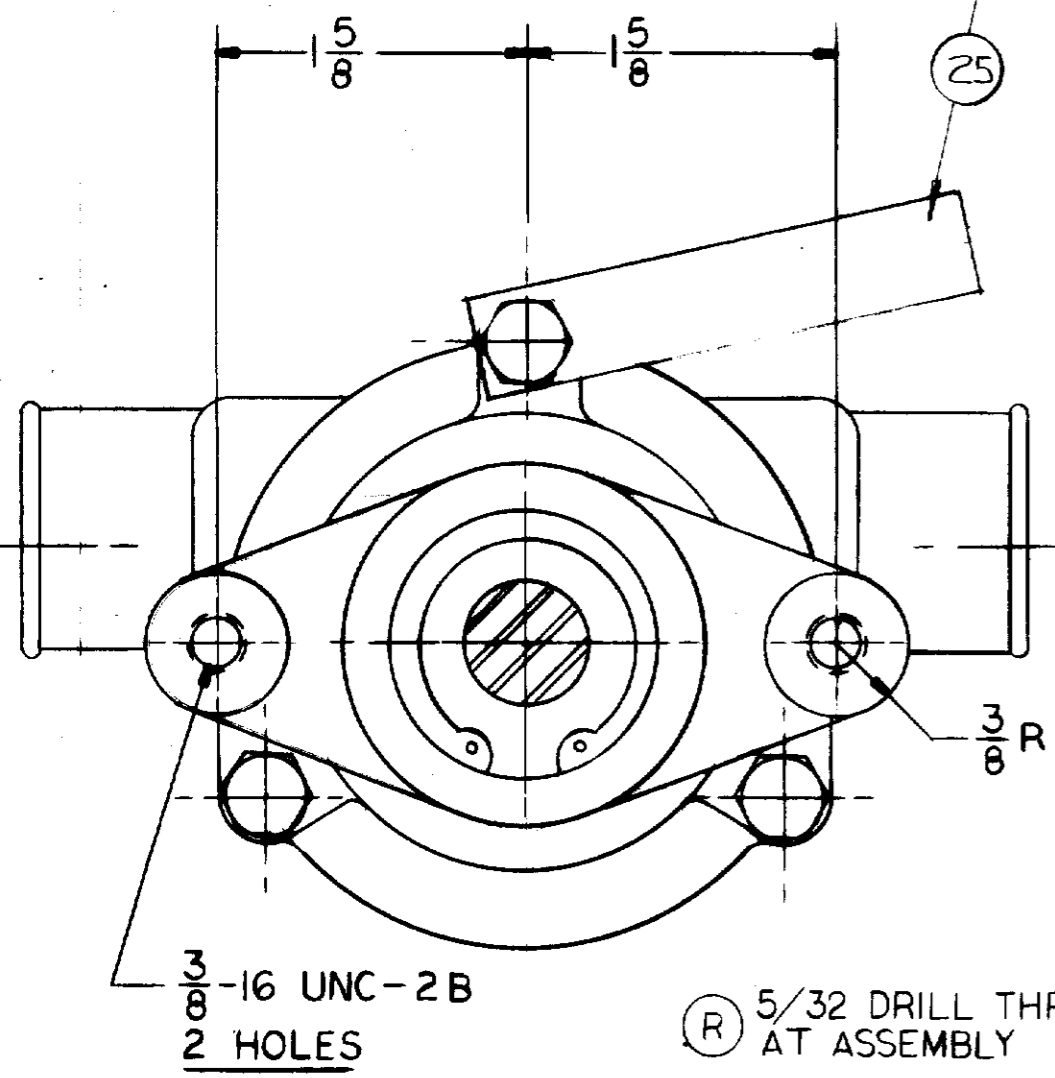
NOTES:
 ADD A SMALL QUANTITY OF LOCTITE RC/601 TO THE PULLEY BORE
 ASSEMBLE THE PULLEY, RETAINING RING, DRILL THE 5/32 DIA HOLE THRU THE SHAFT & PULLEY, THEN ASSEMBLE THE 11541 PIN & TIGHTEN SET SCREW
 ALL THIS MUST BE COMPLETED BEFORE THE LOCTITE CAN FIX (APPROX 10 MINUTES AT ROOM TEMPERATURE)

PACKAGING:
 NO 11516 PALLET 1 REQ'D.
 14120 TUBE CONTAINER 1 REQ'D.
 14122 PAD 36 X 36 6 REQ'D.
 18025 INSERT 4 REQ'D.
 25 PUMPS/LAYER X 4 LAYERS = 100 PUMPS/PALLET

UNIT PACKAGING
 NO 17636 CARTON W 1 REQ'D
 NO 12209 LABEL 1 REQ'D



STAMP PUMP ASSY No
 & DATE CODE ON TAG
 AND ATTACH WITH
 SCREW AS SHOWN



29 G.P.M. AT 3000 R.P.M.

3675763

FLOW CURVE 71035R-71036R

VIEW "A"
 ASSEMBLE RET. RING AS SHOWN
 THIS SIDE TOWARDS PULLEY HUB
 LOCATE THE RETAINING RING AS
 SHOWN IN RELATION TO THE KEYWAY

T	13285 TAG ADDED	RM 8-9-83
S	NOTE ADDED	RM 8-9-83
R	DRILLING & 11541 PIN ADDED	RM 2-12-79
G	PACKAGING NOTE ADDED	RM 7-21-78
P	12857 WAS 1483	RM 2-2-78
O	12856 WAS 12230	RM 2-2-78
N	12855 GASKET ADDED	RM 2-2-78
M	12314 KIT REVISED	RM 10-26-74
L	12752 KIT ADDED	RM 10-26-74
K	12622 KEY WAS 11515	RM 2-6-76
V	GAGE DIMENSION ADDED	KB 4-16-91
U	12859 WAS 12322	SH 7/5/90

UNLESS OTHERWISE SPECIFIED
 TOLERANCE TO BE
 CAST DIMENSION ± .020
 MACHINED DIMENSION
 FRACTIONAL ± .010
 DECIMAL ± .005
 ANGLES ± 1/2°
 MACHINED SURFACE ROUGHNESS
 ALLOW 1/16 STOCK ON ALL FINISHED
 SURFACES FOR MACHINING.
 BREAK ALL SHARP EDGES .040 MAX
 CAST. FILLETS AND RASE 1/16 R

SHERWOOD				
A DIVISION OF HYPRO CORPORATION				
831 E. JEFFERSON AVE. DETROIT, MICHIGAN 48226				
DRAWN	DATE	CHECKED	DATE	ISSUE NO.
SPB	6/12/75	RBM	6/12/75	G-5
TITLE				
PUMP ASSY - RUBBER IMPELLER				
MATERIAL		DWG. NO.		
SEE DETAILS		G-5		

PROJ. NO 181