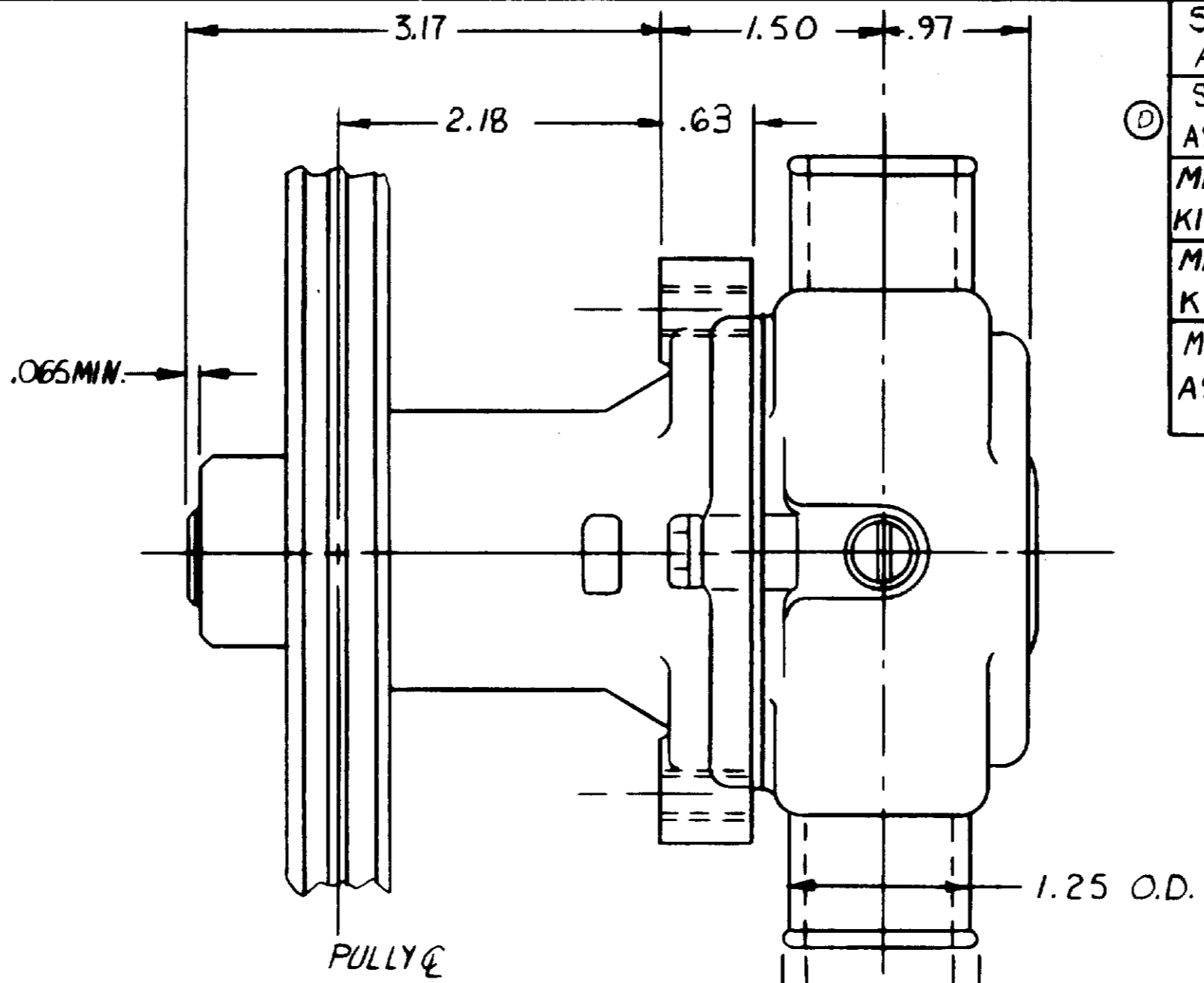


PARTS LIST

ITEM	PART NO.	DESCRIPTION	REQ'D
1	12952	HOUSING	1
2	12231	O-RING	1
3	10515	SCREW	1
4	10929	CAM	1
5	4432	DRIVE KEY	1
6	10615	IMPELLER	1
7	4258	RET. RING	3
8	12314	MECH. SEAL	1
9	12256	SEAL SEAT	1
10	4264	THRUST WASHER	1
11	12856	END PLATE	1
12	1232B	BODY	1
13	12857	CAPSCREW	3
14	12710	LOCKWASHER	3
15	4259	RET. RING	2
16	13363	SHAFT	1
17	12211	BALL BRG.	2
18	5133	BRG. SPACER	1
19	15048	PULLEY ASSY	1
20	12855	GASKET	1
21	13285	TAG-PART N ^o	1



SERVICE ASS'Y N ^o	COMPONENT ITEMS
SEAL & SEAT ASS'Y N ^o 12859	8 & 9
MINOR SERVICE KIT N ^o 11790	SEE DWG.
MAJOR SERVICE KIT N ^o 12946	SEE DWG.
MAJOR SERVICE ASS'Y N ^o 15993	SEE DWG.

G-46

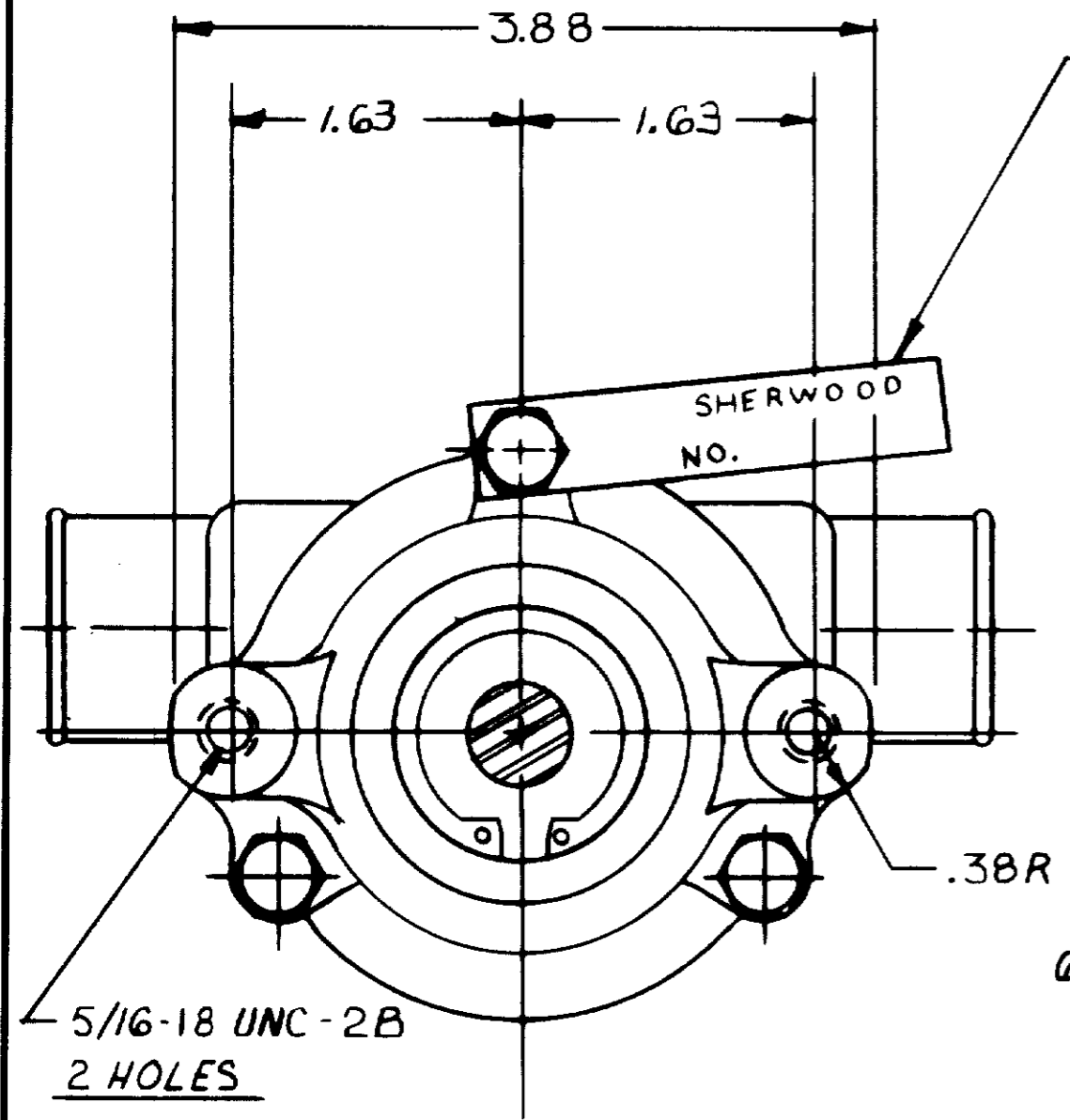
PACKAGING:

N^o 11516 PALLET 1 REQ'D
 14120 TUBE CONTAINER 1 REQ'D.
 14122 PADS 6 REQ'D.
 18025 DIVIDERS 4 REQ'D.

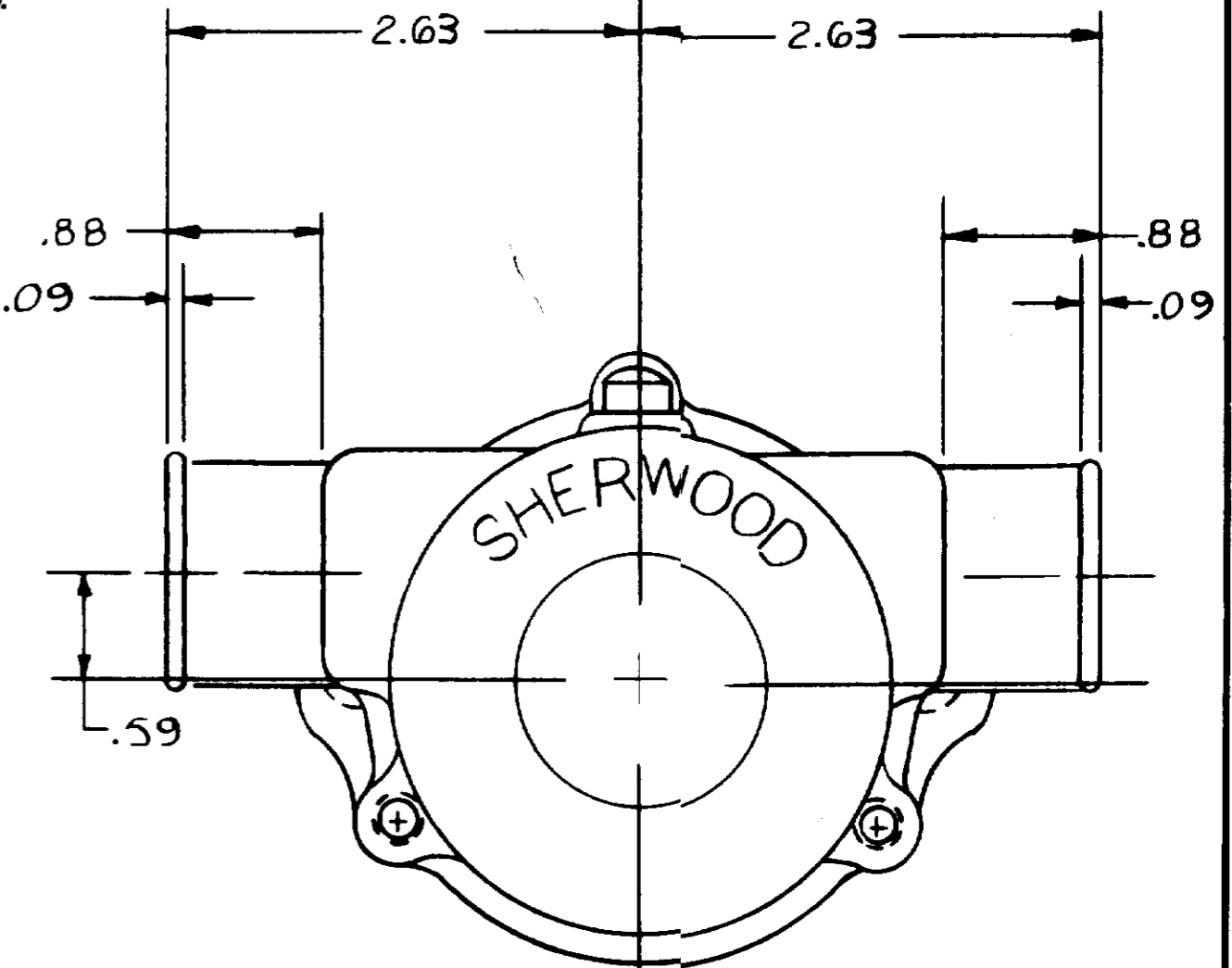
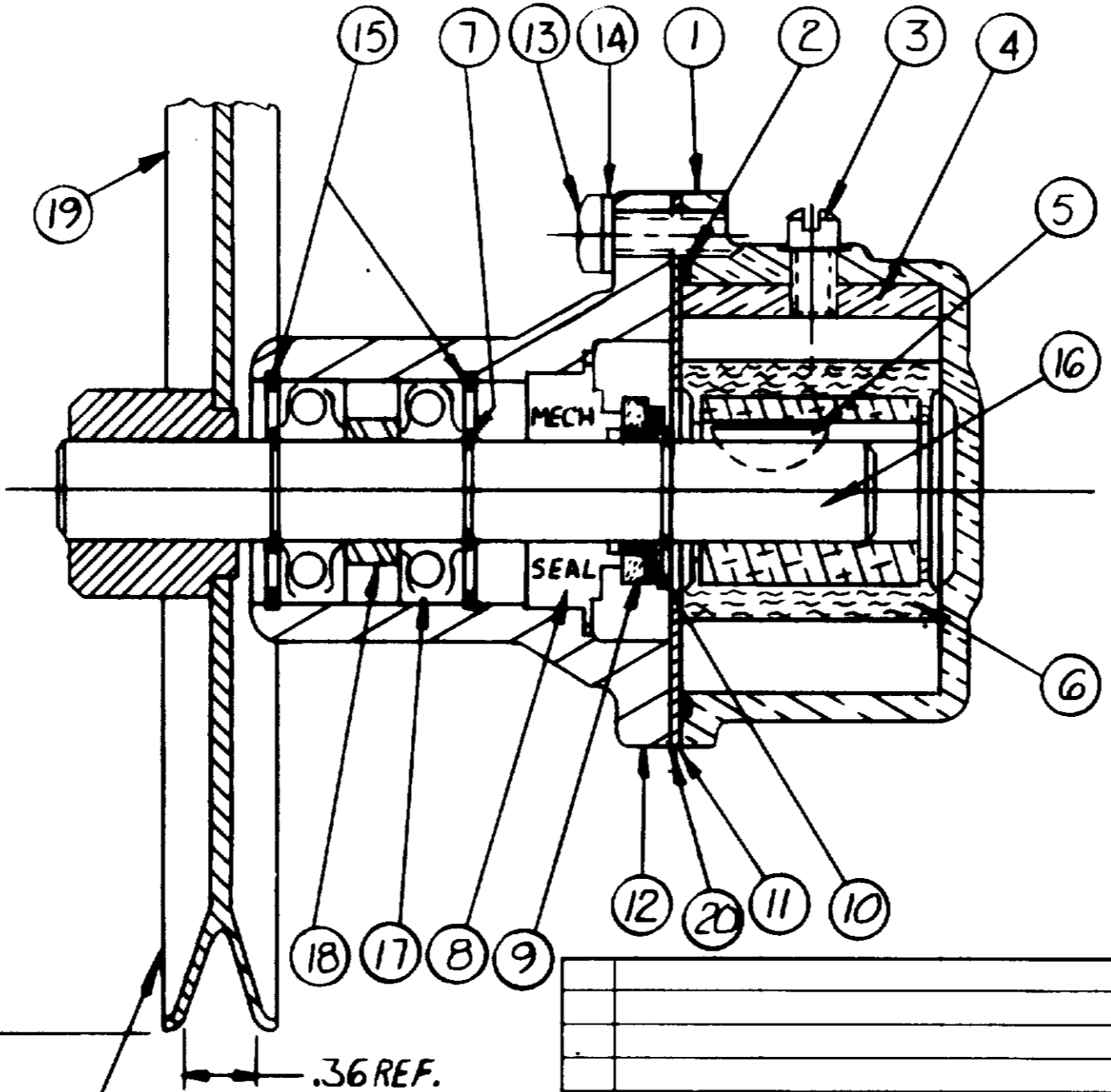
UNIT PACKAGING:

N^o 17636 CARTON W 1 REQ'D
 12209 LABEL 1 REQ'D.

25 PUMPS/LAYER x 4 LAYERS = 100 PUMPS/PALLET
 CAPACITY: 38 G.P.M. @ 3800 R.P.M.



(21) STAMP PUMP ASS'Y N^o AND DATE CODE ON TAG AND ATTACH WITH SCREW AS SHOWN



FLOW CURVE: 76004R

TO PROVIDE MAX. SHAFT TO PULLEY BREAKAWAY TORQUE, THE SHAFT MUST BE HELD SQUARE WITH THE PULLEY HUB WHEN THEY ARE PRESSED TOGETHER. SHEARING OF METAL WILL REDUCE BREAKAWAY TORQUE.

REV.	DESCRIPTION	APPR.	DATE
D	12859 WAS 1232Z	SH	7/5/90
C	REDRAWN WITHOUT CHANGE	KB	3-3-87

UNLESS OTHERWISE SPECIFIED
 CAST DIMENSIONS ± .02
 FILLETS & RADI .06
 FINISH STOCK .07
 MACHINING TOLERANCE, INCHES
 XX ± .01, XXX ± .005
 SURFACE ROUGHNESS
 ANGLES ± 0° 30'
 CORNER BREAKS .01 MAX.
 || PARALLELISM .001
 □ FLATNESS .001
 ⊕ SQUARENESS .001
 ⊙ CONCENTRICITY .001
 ○ ROUNDNESS .002
 ↗ RUNOUT .001

SHERWOOD
 A DIVISION OF HYPRO CORPORATION
 6331 E. JEFFERSON AVE. • DETROIT, MICHIGAN 48207

DRAFTSMAN	DATE	CHECKER	DATE	ASSY NO.
SH	4-24-86	AVB	4-24-86	

TITLE: **PUMP ASSEMBLY RUBBER IMPELLER**

MATERIAL: SEE DETAILS
 DWG. NO.: G-46