

PARTS LIST

ITEM	PART NO	DESCRIPTION	REQ'D
1	12052	HOUSING	1
2	12231	"O" RING GASKET	1
3	10515	SCREW	1
4	10929	CAM	1
5	4432	DRIVE KEY	1
6	10615	IMPELLER	1
7	4258	RET. RING	2
8	12314	MECH. SEAL	1
9	12256	SEAL SEAT	1
10	4264	THRUST WASHER	1
11	12856	END PLATE	1
12	12328	BODY	1
13	12857	CAP SCREW	3
14	12710	LOCKWASHER	3
15	4259	RET. RING	2
16	12233	SHAFT	1
17	12211	BALL BRG.	2
18	5133	BRG. SPACER	1
19	12326	PULLEY-ASSY	1
20	12304	SPACER	1
21	12305	RET. RING	1
22	12622	NON-ROK KEY	1
23	12855	GASKET	1
24	11541	PIN	1
25	13285	TAG	1

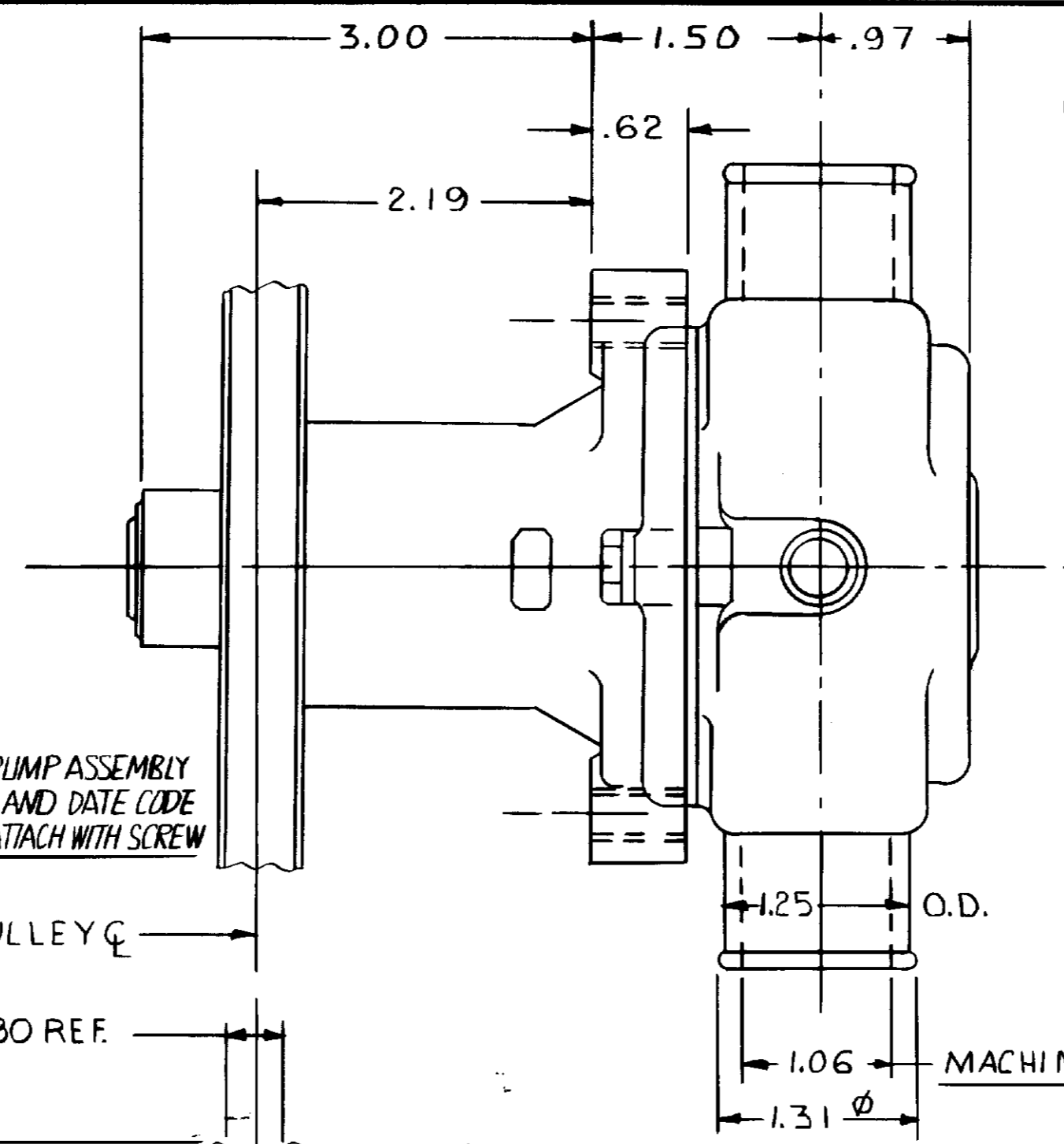
G45-2

SERVICE ASS'Y NO	COMPONENT ITEMS
SEAL & SEAT ASS'Y NO 12859	8 & 9
MINOR SERVICE KIT NO 11790	
MAJOR SERVICE KIT NO. 12946	

PACKAGING:
 NO 11516 PALLET 1 REQ'D
 14120 TUBE CONTAINER 1 REQ'D
 14122 PADS 6 REQ'D
 18025 INSERTS 4 REQ'D

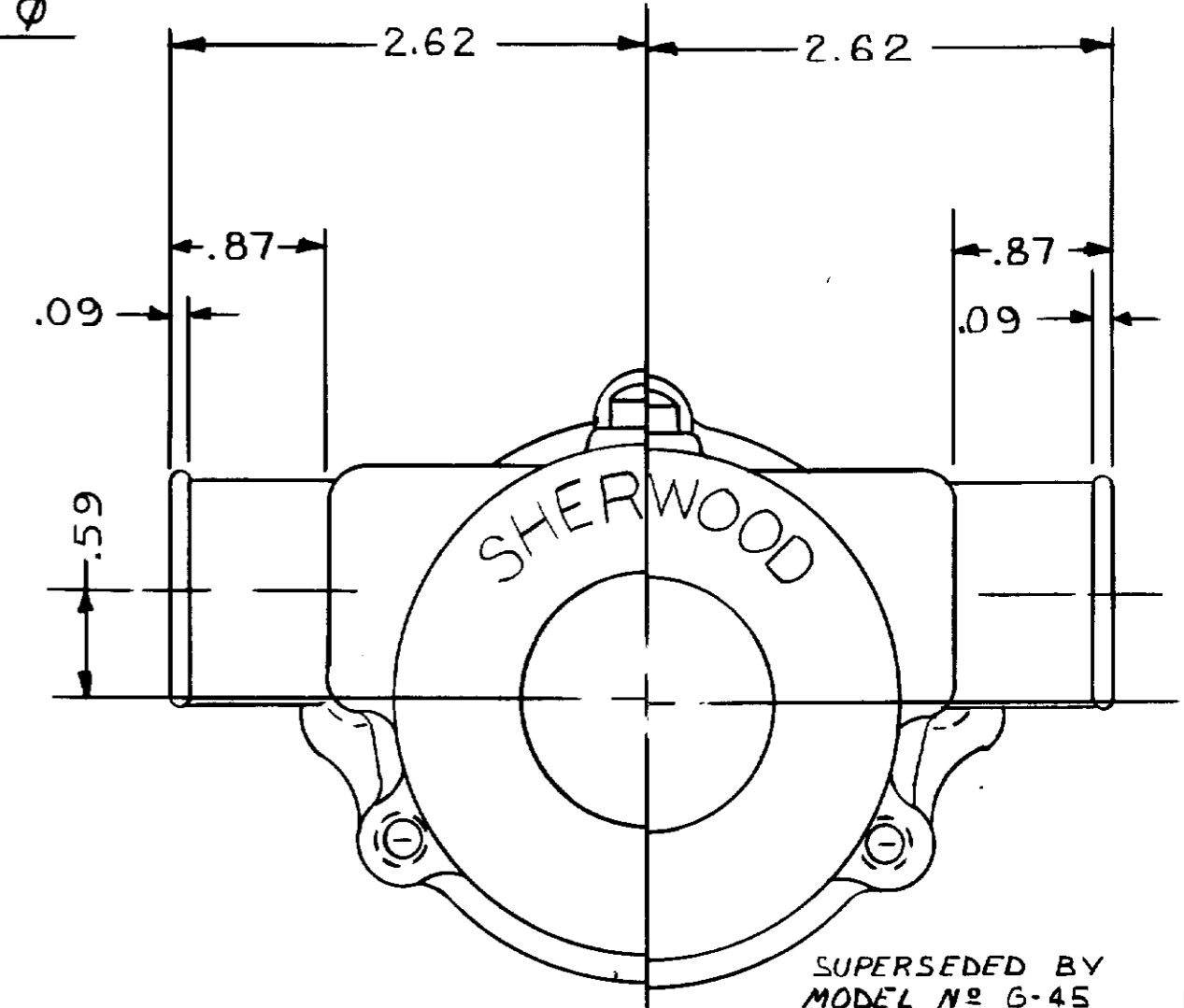
UNIT PACKAGING:
 NO 17636 CARTON W 1 REQ'D
 12209 LABEL 1 REQ'D
 25 PUMPS / LAYER X 4 LAYERS = 100 PUMPS PER PALLET

CAPACITY:
 38 GPM @ 3800 RPM

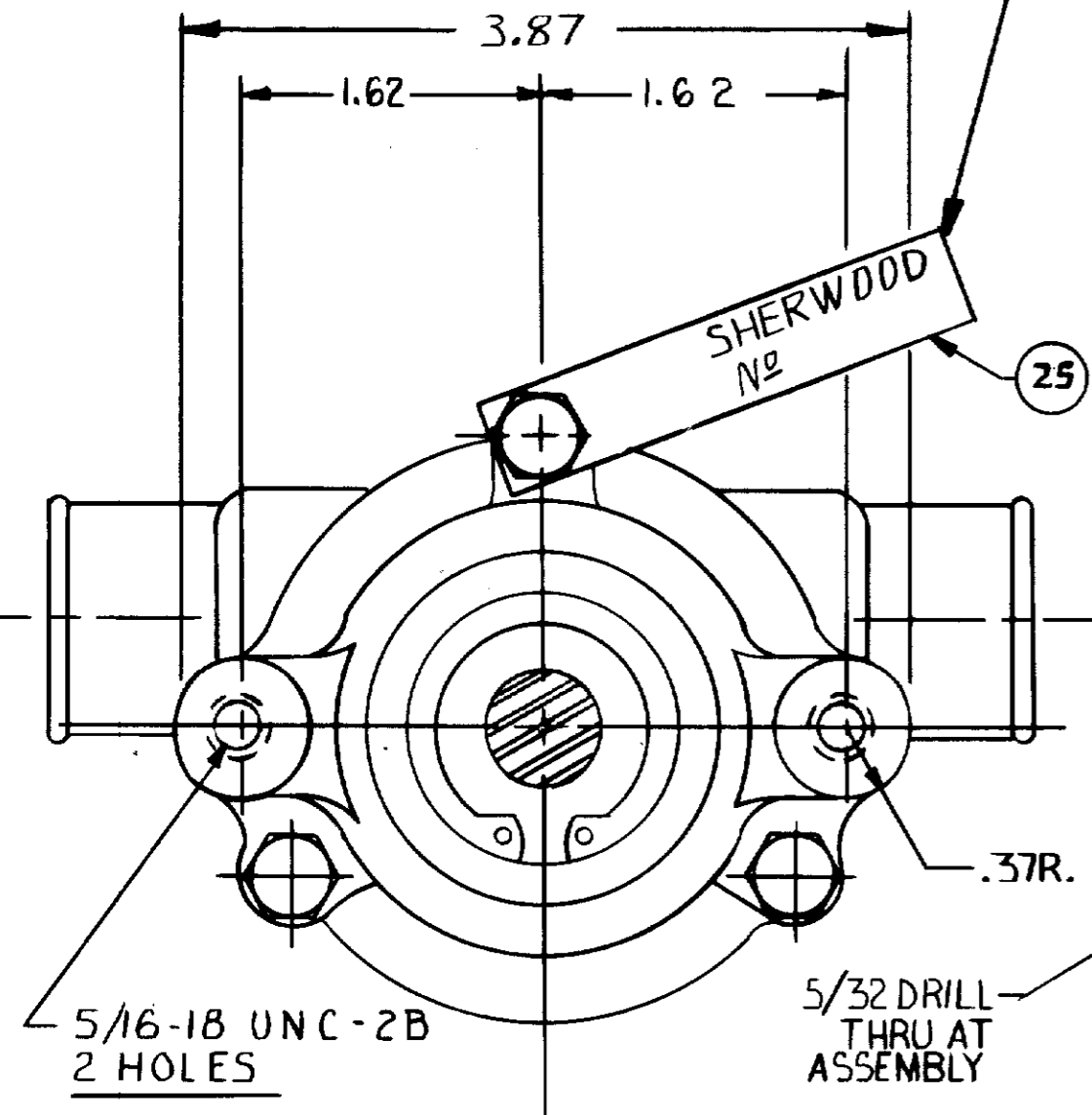


STAMP PUMP ASSEMBLY NO G45-2 AND DATE CODE ON TAG. ATTACH WITH SCREW

PULLEY Ø
 .380 REF.



SUPERSEDED BY MODEL NO G-45
 FLOW CURVE 76004 R



VIEW "A"

VIEW "A"

ASSEMBLE RETAINING RING AS SHOWN THIS SIDE TOWARD PULLEY HUB LOCATE RETAINING RING AS SHOWN IN RELATION TO THE KEYWAY

STAMP PART NO. & DATE CODE HERE

REF # 605D1011 OMC (981939)

REV.	DESCRIPTION	APPR	DATE
0	12859 WAS 12322	SH	7/5/90
N	12314 WAS 8388	SH	11/1/86
M	TAG 13285 ADDED	SH	10/27/86
L	REDRAWN WITHOUT CHANGE	KB	10/2/86

UNLESS OTHERWISE SPECIFIED
 CAST DIMENSIONS ± .02
 FILLETS & RADII .06
 FINISH STOCK .07
 MACHINING TOLERANCE, INCHES
 XX ± .01, XXX ± .005
 SURFACE ROUGHNESS
 ANGLES ± 0° 30'
 CORNER BREAKS .01 MAX.
 PARALLISM .001
 FLATNESS .001
 SQUARENESS .001
 CONCENTRICITY .001
 ROUNDNESS .0002
 RUNOUT .001

SHERWOOD
 A DIVISION OF HYPRO CORPORATION
 6331 E. JEFFERSON AVE. • DETROIT, MICHIGAN 48207

DRAFTSMAN	DATE	CHECKER	DATE	ASSY NO.
BT	1-27-77	RBM	1-27-77	

TITLE
**PUMP ASSEMBLY
 RUBBER IMPELLER**

MATERIAL
 SEE DETAILS

DWG. NO.
 G45-2