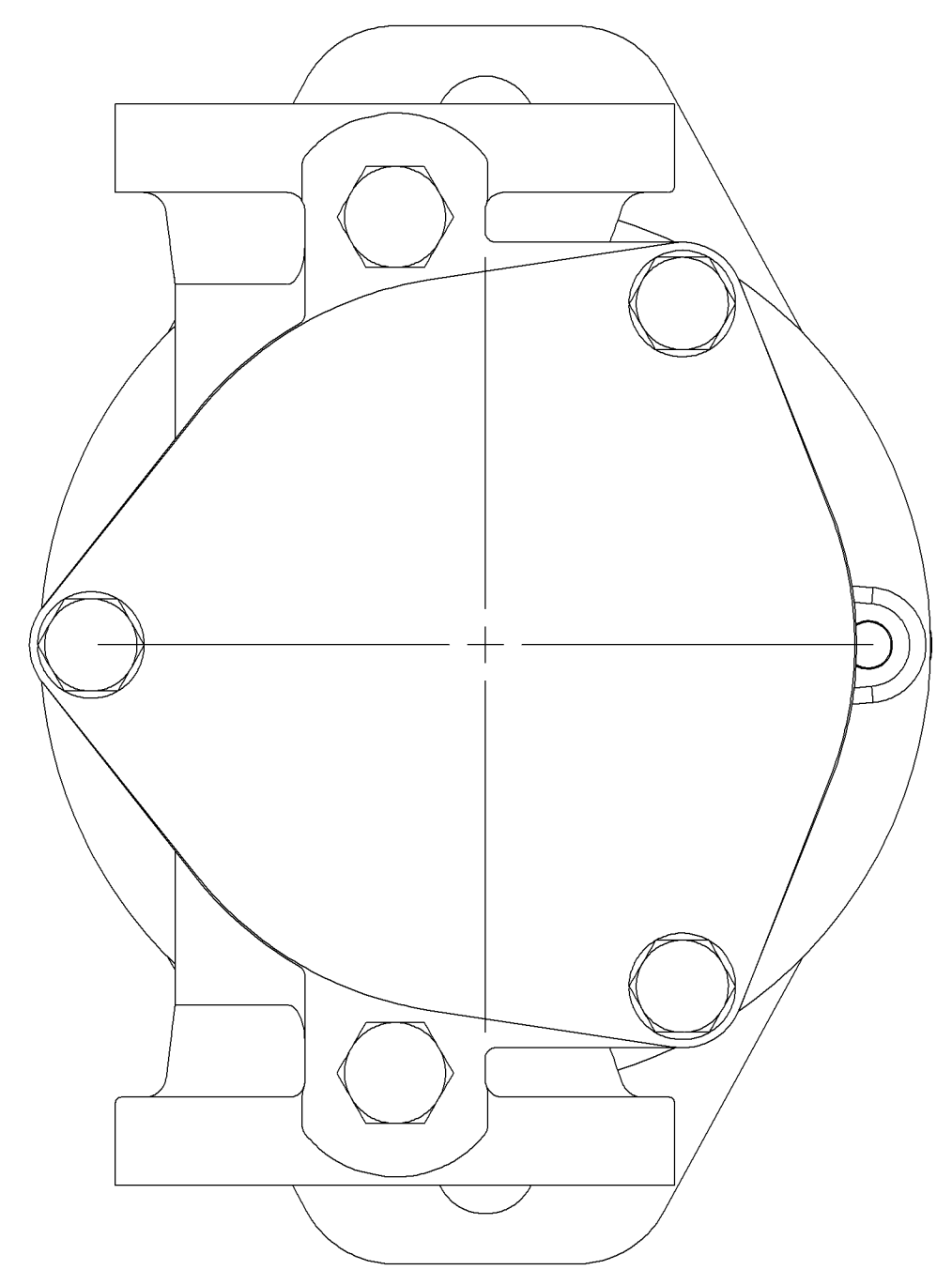
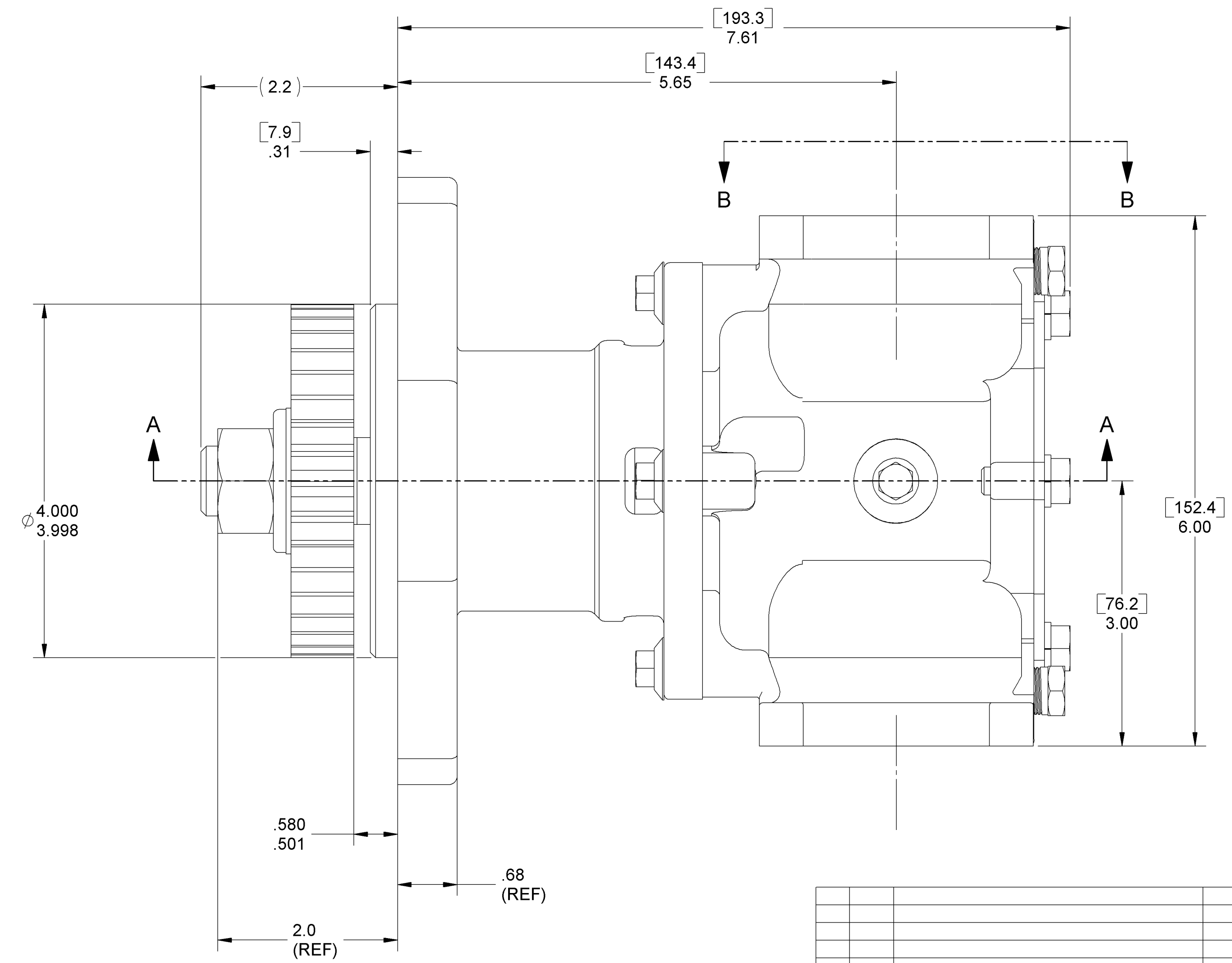
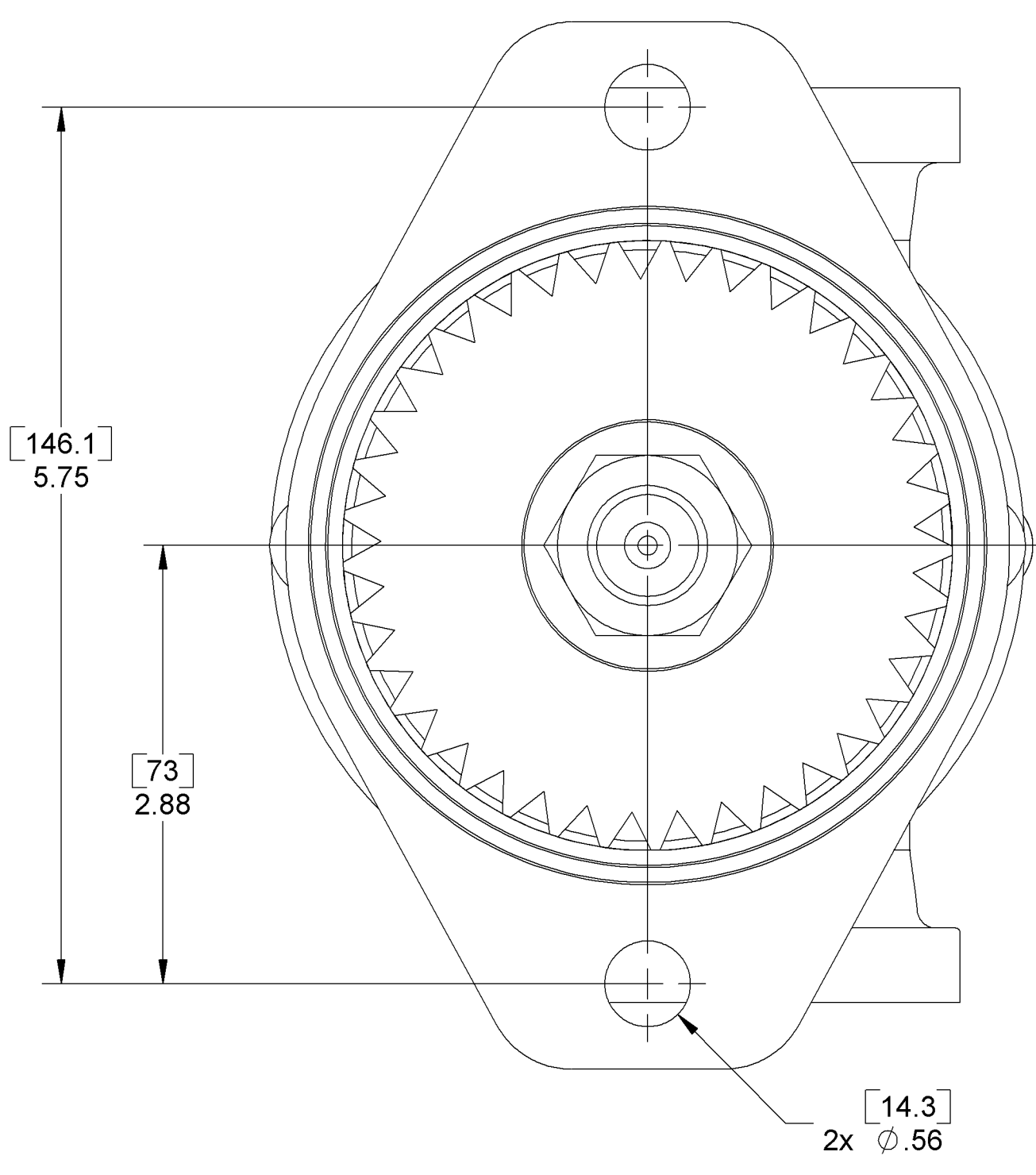
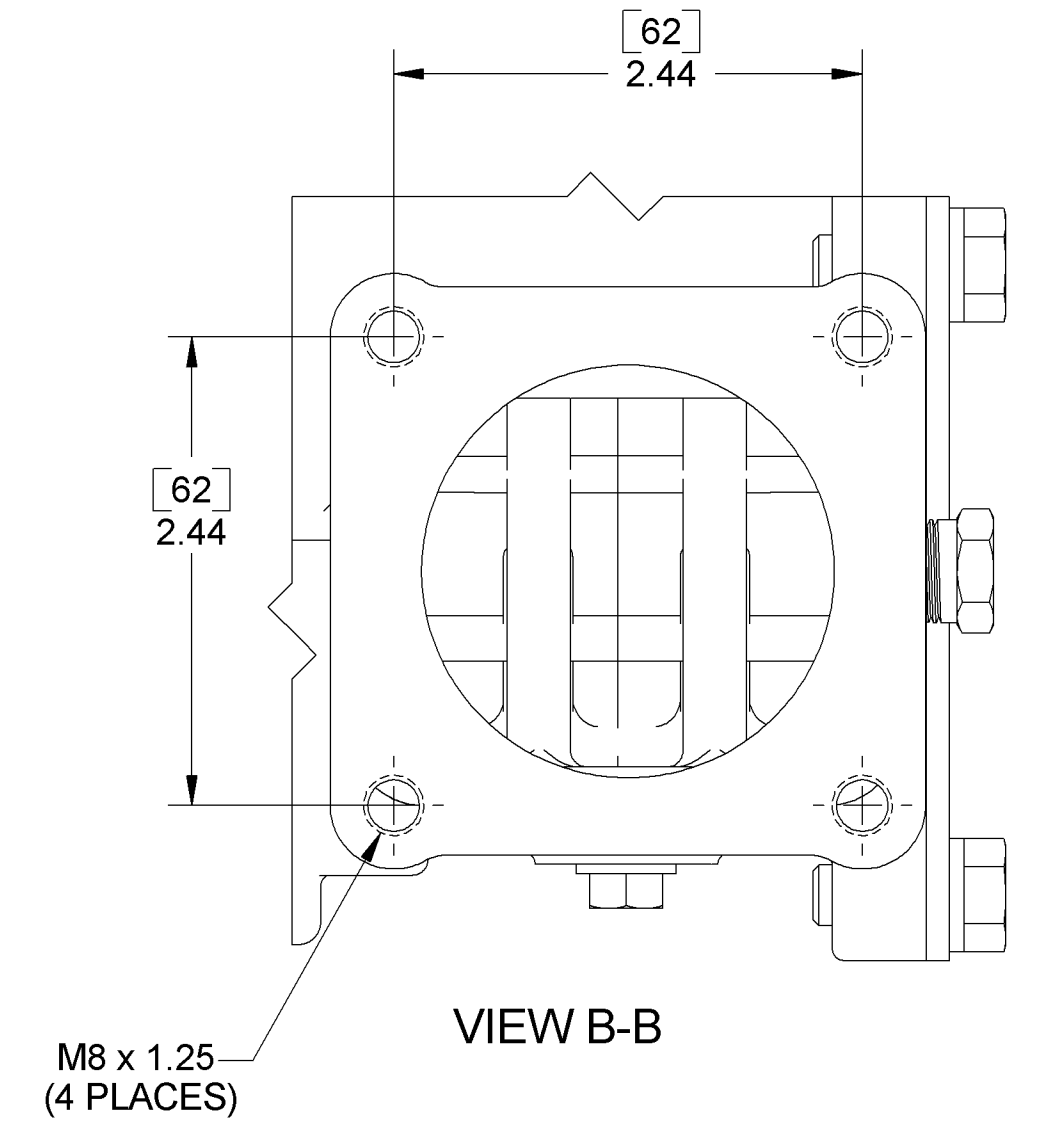
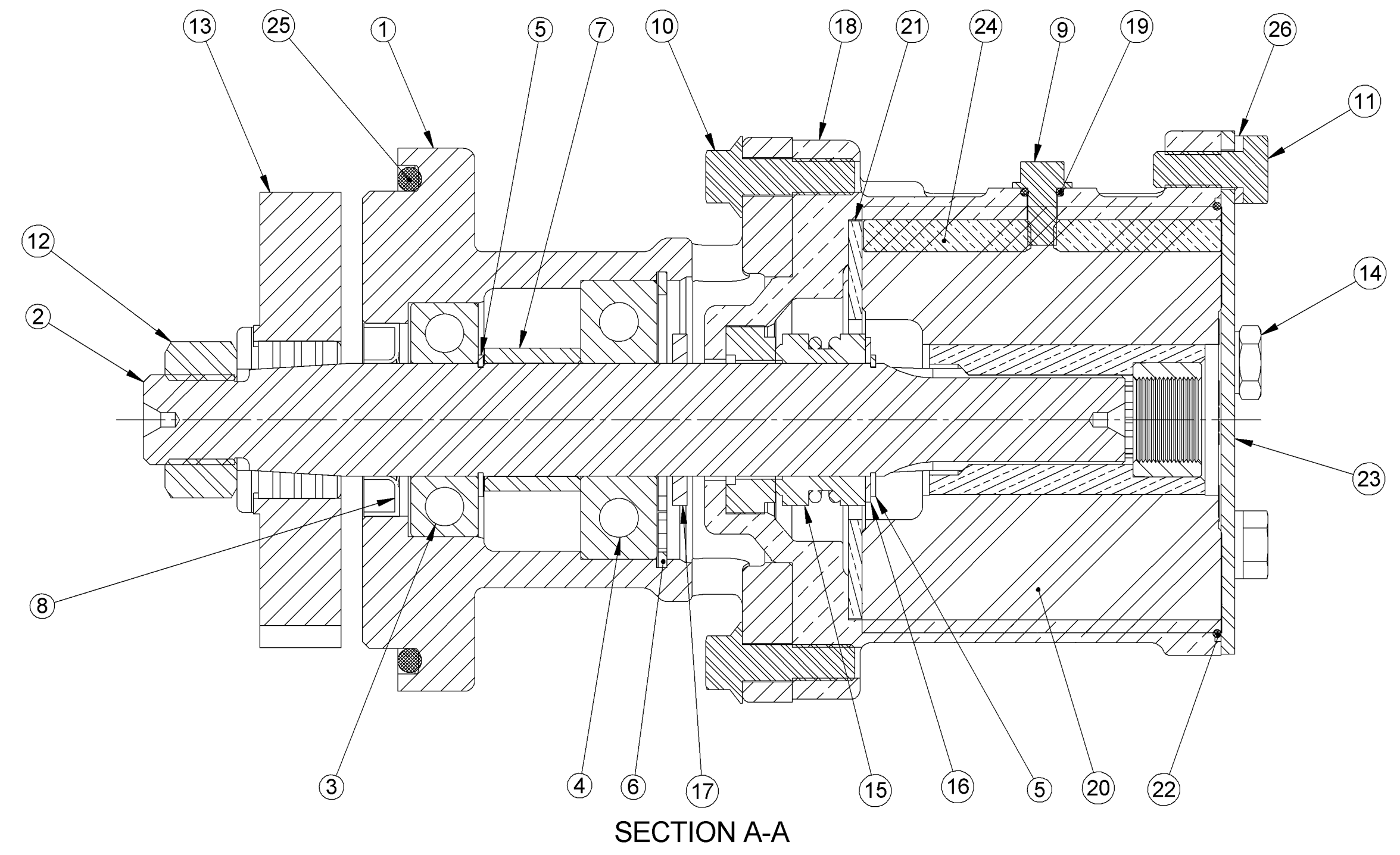


ITEM NO.	QTY.	PART NO.	DESCRIPTION
1	1	24102	BODY
2	1	24103	SHAFT
3	1	24082	BALL BEARING
4	1	23489	BALL BEARING
5	2	19762	EXTERNAL RETAINING RING
6	1	19867	INTERNAL RETAINING RING
7	1	24104	SPACER
8	1	19869	LIP SEAL
9	1	19714	CAM SCREW
10	4	19708	FLANGE HEAD BOLT
11	3	19626	BOLT
12	1	24084	HEX NUT
13	1	24083	GEAR ASSEMBLY
14	2	00339	PIPE PLUG
15	1	23837	MECH SEAL
16	1	19866	WASHER-SPACER
17	1	24079	SLINGER
18	1	24072	HOUSING
19	1	19712	O-RING
20	1	26000	IMPELLER
21	1	24073	WEAR PLATE
22	1	19879	O-RING
23	1	24074	COVER PLATE
24	1	24075	CAM
25	1	1720-0212	O-RING
26	3	21573	LOCK WASHER

- ASSEMBLY NOTES:
- USE LOCTITE PRIMER AND LOCTITE 262, OR EQUIV, ON FLANGE BOLTS (ITEM 10), AND TORQUE TO 18 FT/LBS.
  - USE SILICON LUBRICANT TO AID IN INSTALLATION OF RUBBER IMPELLER.
  - USE PAC-EASE OR EQUIV. WHEN INSTALLING MECHANICAL SEAL.
  - LIP SEAL TO BE INSTALLED DRY.
  - GEAR MUST HAVE CUMMINS #3931338
  - COAT ALL METAL SURFACES WITH A RUST INHIBITOR PRIOR TO PACKING, USE VAPOR WRAP.
  - USE LOCTITE PRIMER AND LOCTITE 262, OR EQUIV, ON HEX NUT (ITEM 12), AND TORQUE TO 130-140 FT/LBS.
  - INSTALL IMPELLER (ITEM 20) IN A COUNTER-CLOCKWISE DIRECTION, FACING THE IMPELLER.
  - STAMP G2601, DATE CODE, AND USA ON BACK COVER.



FORM FMEH-031 REV...		SHERWOOD A Div. of Hypro Corporation 375 Fifth Avenue NW, New Brighton, MN 55112, (651) 766-6300		EXPERIMENTAL PART NO.	
A 4465 RELEASE TO PRODUCTION		A WICOR COMPANY 55112, (651) 766-6300		ENGRG REL: 4465 DATE: 10-05-04	
REV. ECN REVISION DESCRIPTION		DRAWING BASED ON ASME Y14.5M-1994 DO NOT SCALE PRINT		DWG BY: FLA DATE: 10-01-04	
CHKD DATE		THIRD ANGLE PROJECTION SCALE 1:1		CHECKED BY: DV DATE: 10-05-04	
PART DESCRIPTION		PUMP ASSY		THIS DRAWING IS THE PROPERTY OF HYPRO AND WITHOUT WRITTEN AUTHORIZATION, MUST NOT BE COPIED OR COMMUNICATED.	
REV. A		PART NUMBER		G2601X	