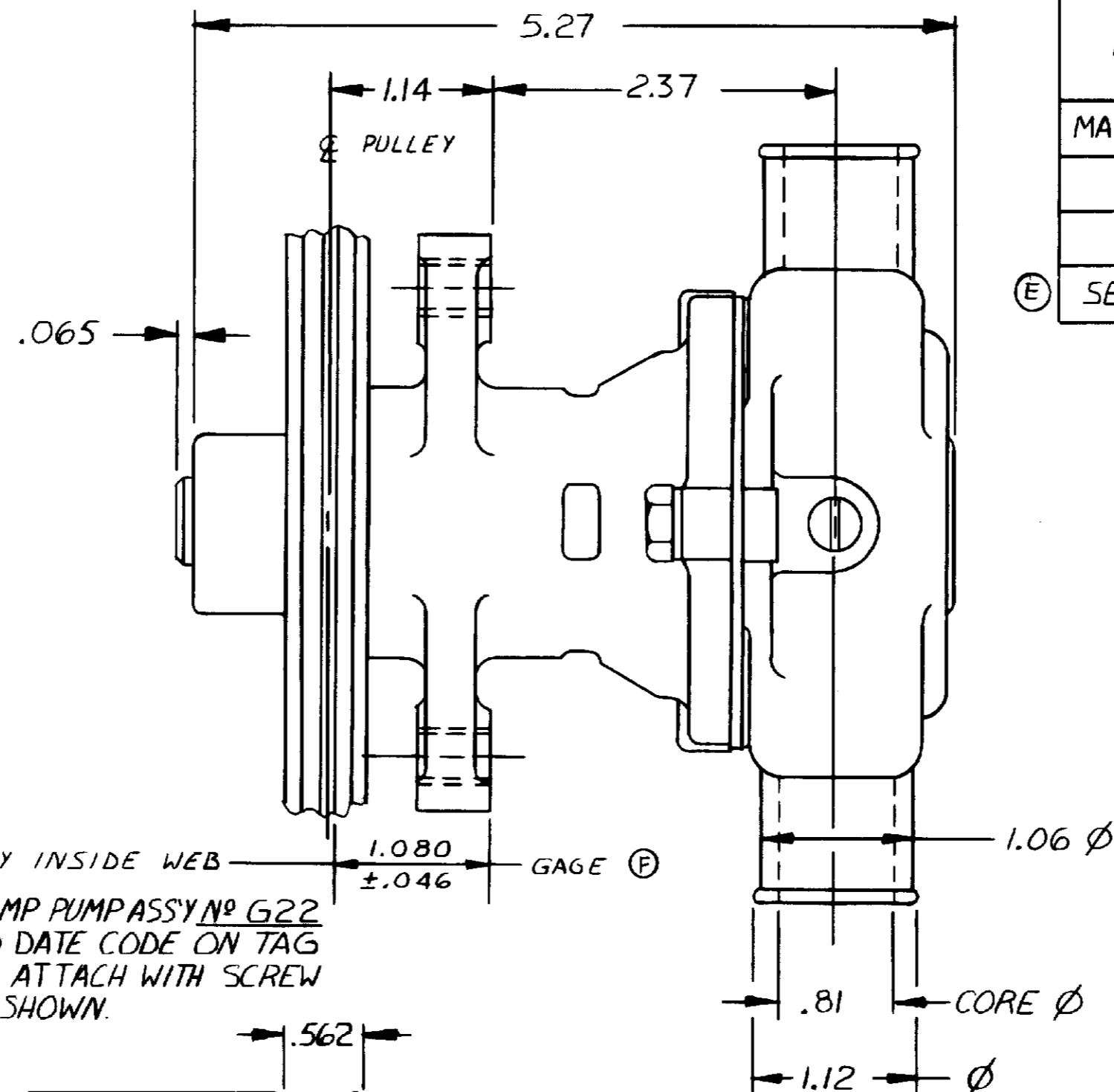


PARTS LIST			
ITEM	PART N ^o	DESCRIPTION	REQ'D
1	13362	PULLEY ASS'Y	1
2	13363	SHAFT	1
3	4259	RETAINER RING	2
4	5133	SPACER	1
5	12211	BEARING	2
6	12857	SCREW	3
7	12710	LOCK WASHER	3
8	12856	ENDPLATE	1
9	10515	SCREW	1
10	10627	CAM (.182)	1
11	9959	IMPELLER	1
12	4432	KEY DRIVE	1
13	4258	RETAINER RING	3
14	4264	THRUST WASHER	1
15	12303	HOUSING	1
16	12231	"O" RING	1
17	12855	GASKET	1
18	12256	SEAT ASS'Y	1
19	12314	SEAL ASS'Y	1
20	17501	BODY	1
21	13285	TAG-PART NUMBER	1



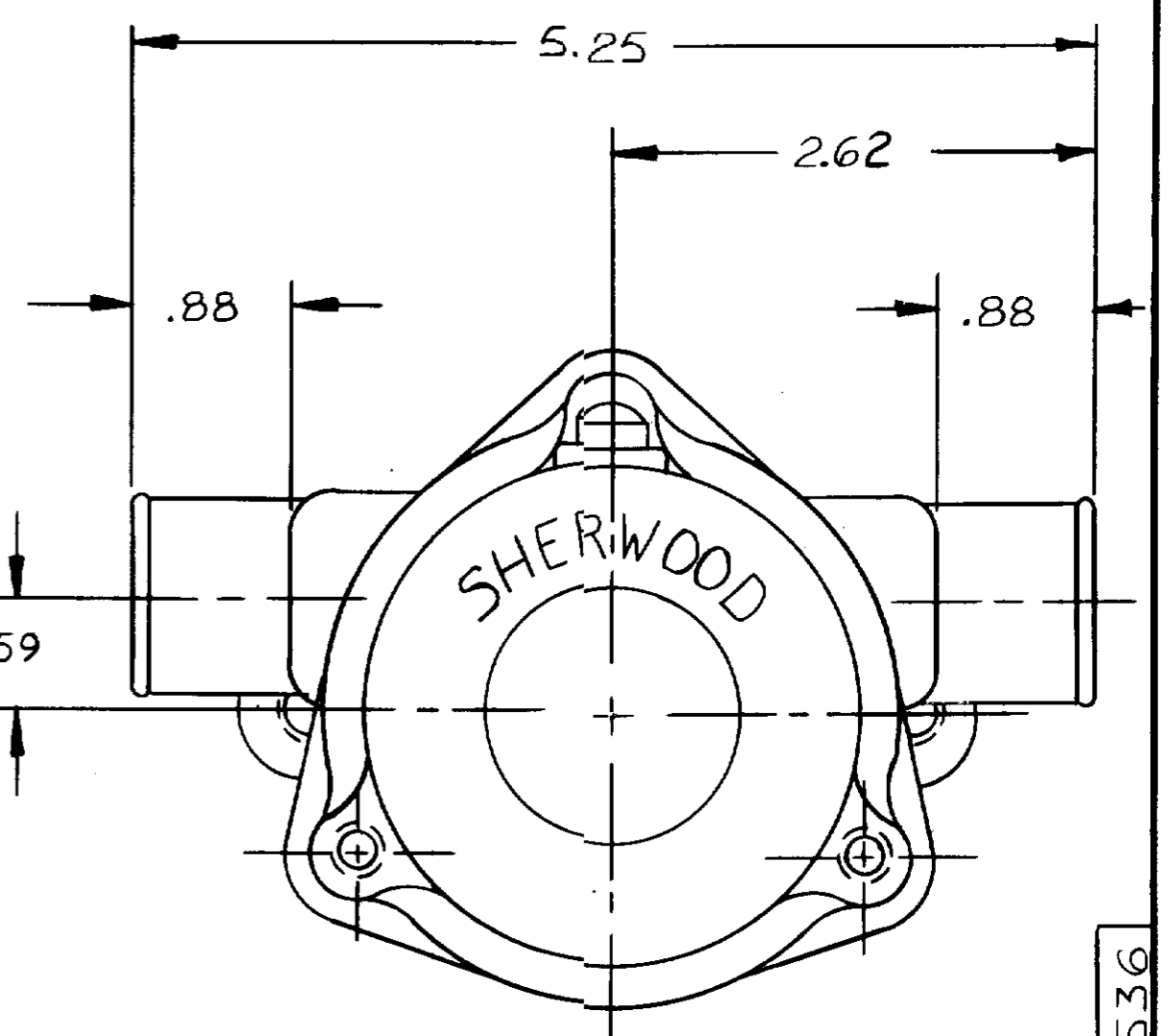
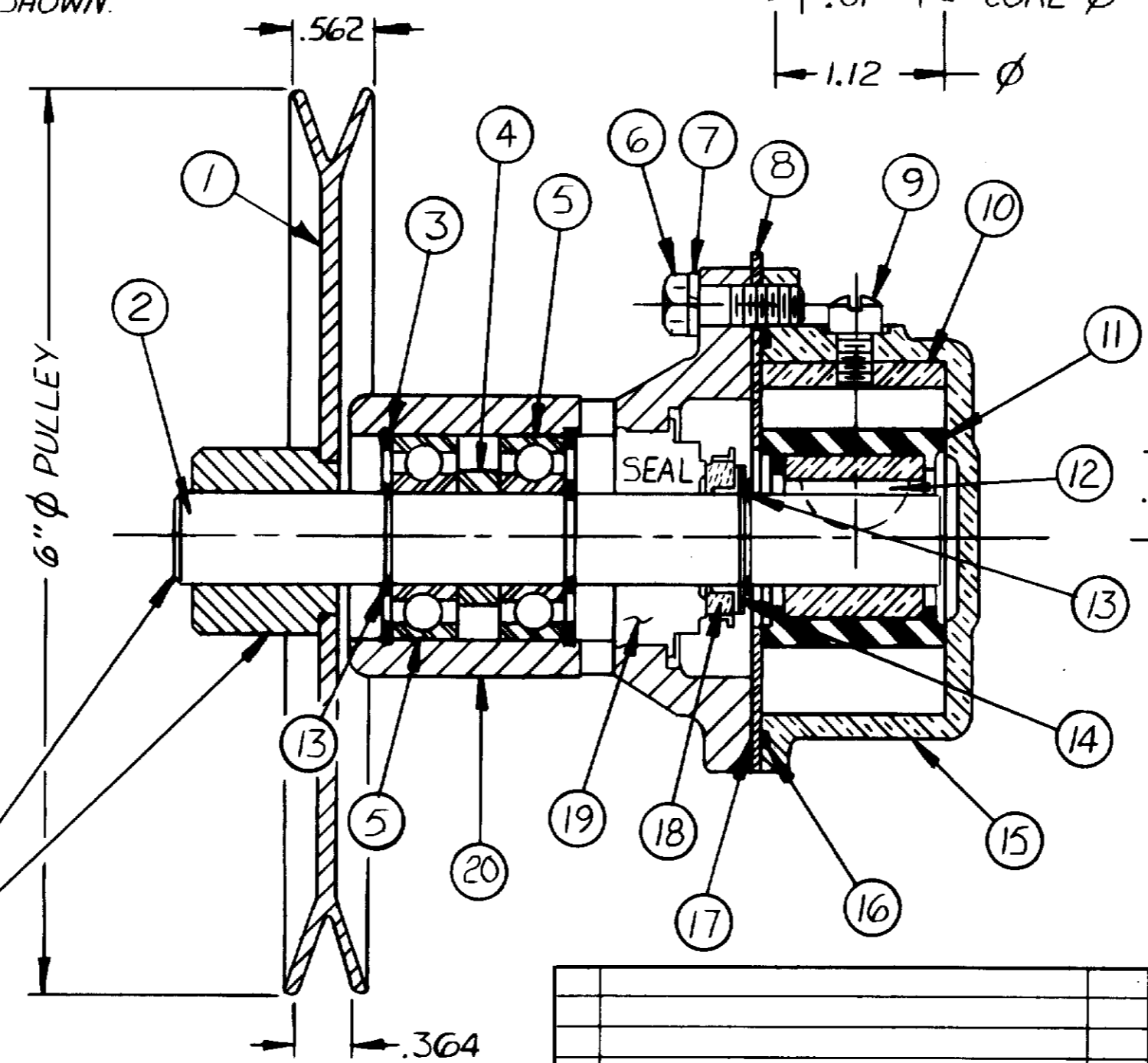
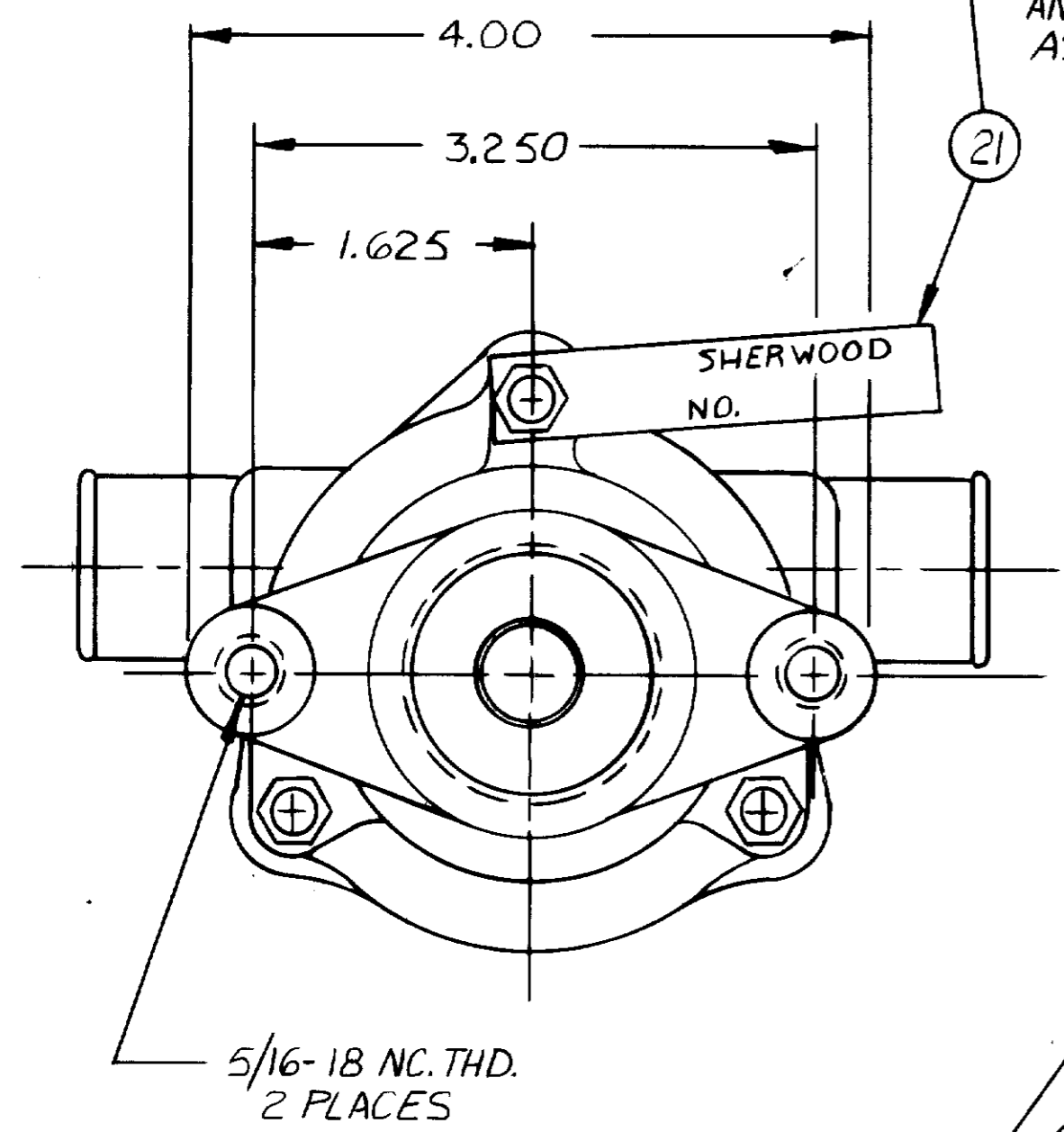
DESCRIPTION	SERVICE KIT N ^o AND ASSEMBLY N ^o	G22
MAJOR SERVICE ASS'Y	17507	
MAJOR KIT	12665	
MINOR KIT	12399	
ⓔ SEAL & SEAT ASS'Y	12859	

PACKAGING:
 N^o 11516 PALLET 1 REQ'D.
 14120 TUBE CONTAINER 1 REQ'D.
 14132 PADS 6 REQ'D.
 18025 DIVIDERS 4 REQ'D.

UNIT PACKAGING
 N^o 17636 CARTON W 1 REQ'D.
 12209 LABEL 1 REQ'D.

25 PUMPS/LAYER x 4 LAYERS = 100 PUMPS/PALLET

PULLEY INSIDE WEB
 STAMP PUMP ASS'Y N^o G22
 AND DATE CODE ON TAG
 AND ATTACH WITH SCREW
 AS SHOWN.



PLEASURE CRAFT N^o _____
 FLOW CURVE: 83015R

TO PROVIDE MAXIMUM SHAFT TO PULLEY
 BREAK-AWAY TORQUE THE SHAFT MUST
 BE HELD SQUARE WITH THE PULLEY HUB
 WHEN THEY ARE PRESSED TOGETHER
 SHEARING OF METAL WILL REDUCE
 BREAK-AWAY TORQUE.

REV.	DESCRIPTION	APPR.	DATE
F	GAGE DIMENSION ADDED	KB	7-9-91
E	12859 WAS 12322	SH	7/5/90
D	REDRAWN WITHOUT CHANGE	KB	5-28-87

UNLESS OTHERWISE SPECIFIED
 CAST DIMENSIONS ± .02
 FILLETS & RADII .06
 FINISH STOCK .07
 MACHINING TOLERANCE, INCHES
 XX ± .01, XXX ± .005
 SURFACE ROUGHNESS
 ANGLES ± 0° 30'
 CORNER BREAKS .01 MAX.
 || PARALLISM .001
 ⊥ FLATNESS .001
 ⊕ SQUARNESS .001
 ⊙ CONCENTRICITY .001
 ○ ROUNDNESS .002
 ↗ RUNOUT .001

SHERWOOD
 A DIVISION OF HYPRO CORPORATION
 8831 E. JEFFERSON AVE. • DETROIT, MICHIGAN 48227

DRAFTSMAN	DATE	CHECKER	DATE	ASSY NO.
RJW	11-3-83	RBM	1-12-84	G22

TITLE: PUMP ASS'Y - RUBBER IMPELLER
 MATERIAL: _____ DWG. NO.: G22

PROJ. N^o 536