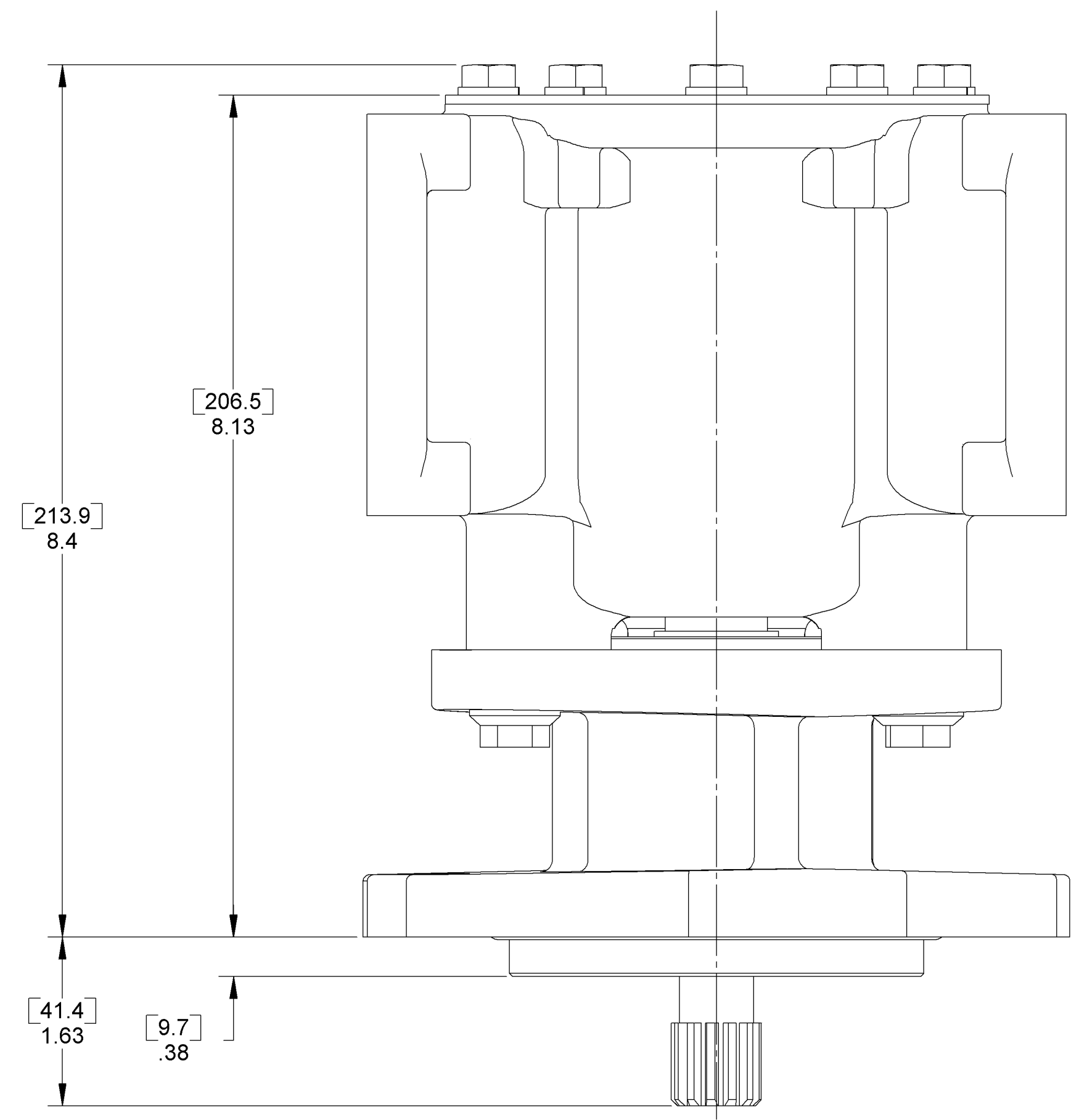


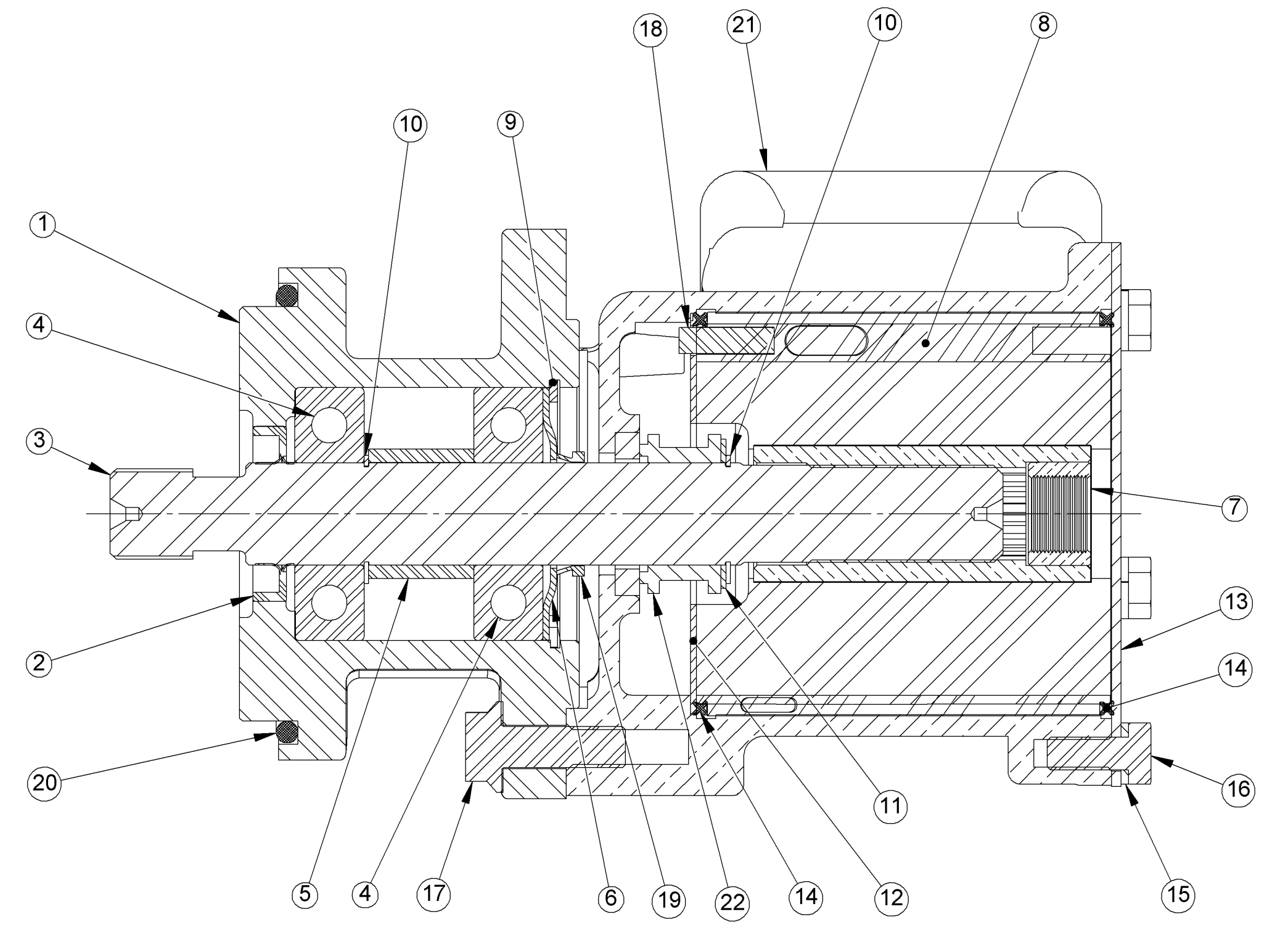
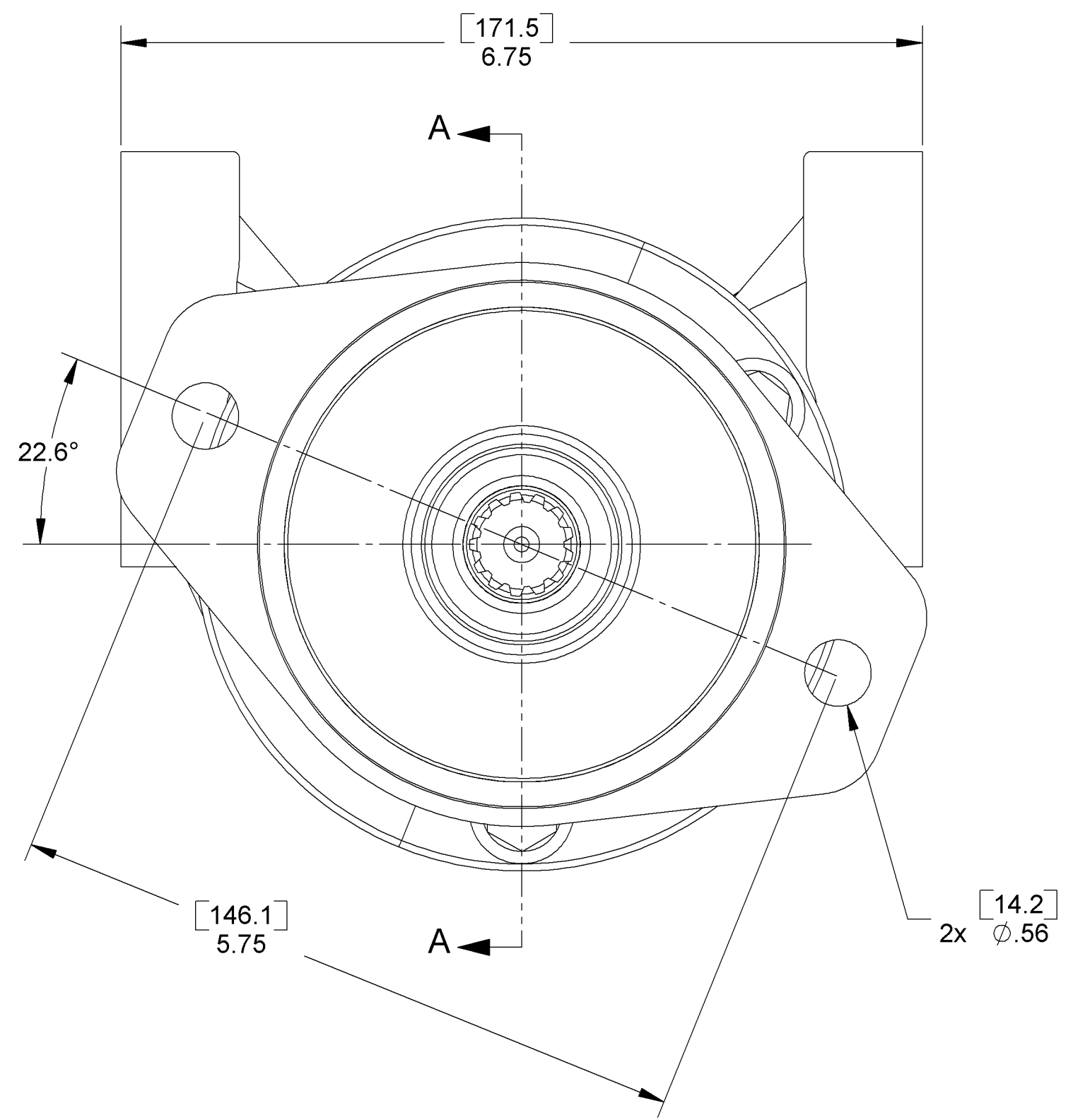
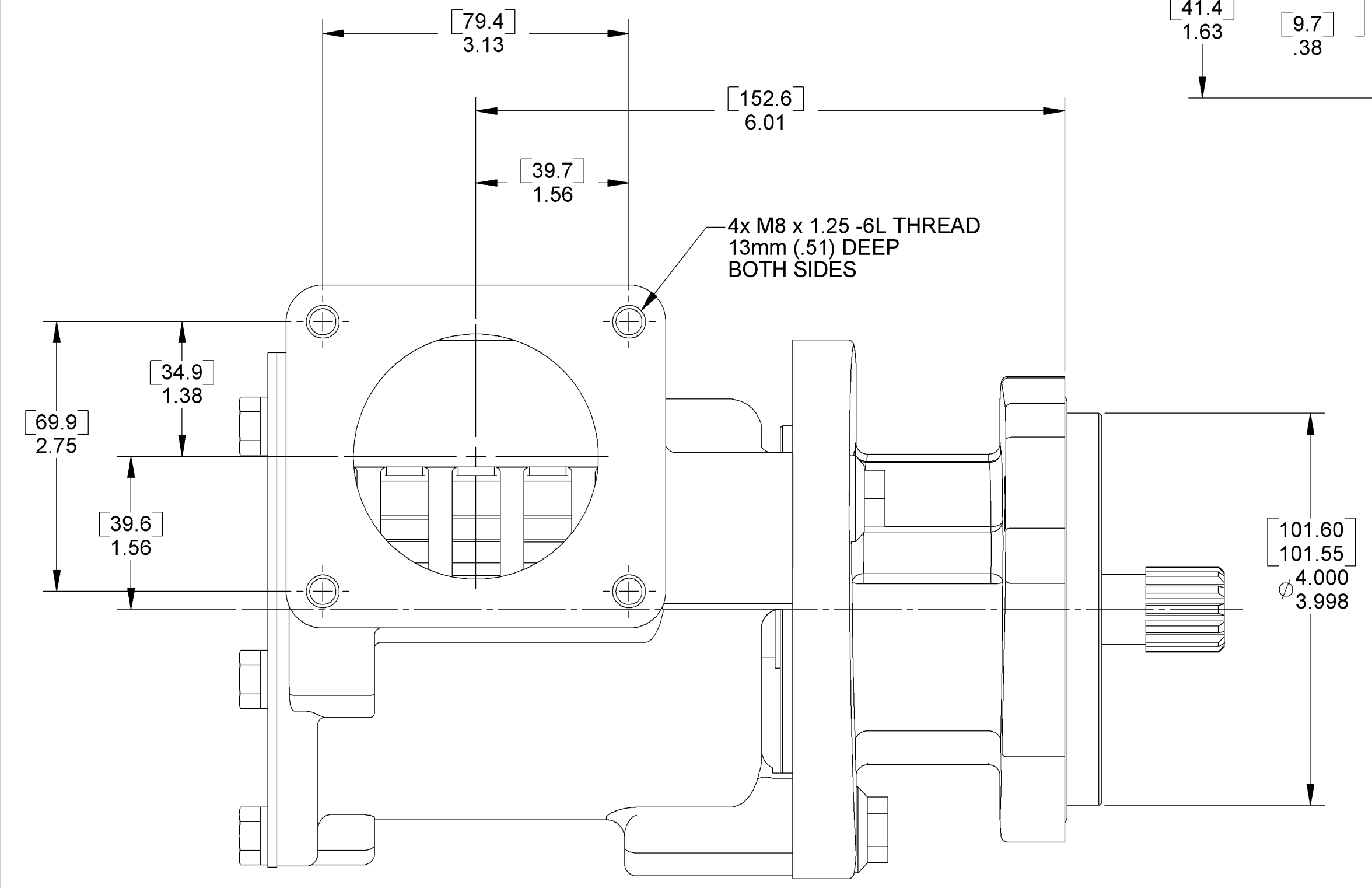
NOTE:

- 1) APPLY LOCTITE #262 (RED) OR EQUIVALENT TO FLANGE BOLT (17) AND TORQUE TO 25 FT/LBS.
- 2) INSTALL IMPELLER CLOCKWISE VIEWED FROM COVER USING SILICON LUBRICANT FOR EASE OF ASSEMBLY.
- 3) STATIC TEST MECHANICAL SEAL AND SEAT FOR LEAKS USING 15-45 PSI WATER PRESSURE.
- 4) BOLT (16) TORQUE TO 5-8 FT/LBS.
- 5) SEAT/SEAL ASSY (22) MUST BE INSTALLED USING PAC-EASE OR EQUIVALENT LUBRICANT.
- 6) LIP SEAL (2) MUST BE INSTALLED COMPLETELY DRY, NO GREASE ON SHAFT OR LIP.
- 7) COVER TO BE STAMPED:
G1810X
MONTH CODE
USA

ITEM NO	QTY	PART NO.	DESCRIPTION
1	1	23396	BODY - MACH.
2	1	23045	OIL SEAL
3	1	23272	SHAFT
4	2	23489	BALL BEARING
5	1	23387	SPACER
6	1	23425	SHIELD
7	1	18000	IMPELLER-RUBBER
8	2	21106	CAM HALF
9	1	19867	INTERNAL RETAINING RING
10	2	19762	EXTERNAL RETAINING RING
11	1	19866	WASHER-SPACER
12	1	19836	WEAR PLATE
13	1	19837	COVER PLATE
14	2	21561	QUAD-RING
15	5	15944	WASHER-LOCK
16	5	19626	BOLT
17	3	23296	FLANGE BOLT
18	1	21566	PIN
19	1	19868	V-RING
20	1	1720-0212	O-RING
21	1	23523	HOUSING
22	1	23512	SEAT/SEAL ASSEMBLY



ALL DIMENSIONS ARE REFERENCE



SECTION A-A

		SHERWOOD		EXPERIMENTAL PART NO.	REV.
		A Div. of Hypro Corporation A WICOR COMPANY 375 Fifth Avenue NW, New Brighton, MN 55112, (651) 766-6300		ENGRG REL: PCN 3631 DATE: 09-19-03	
				DWG BY: DV DATE: 09-19-03	
				CHECKED BY: FLA DATE: 09-19-03	
				THIS DRAWING IS THE PROPERTY OF HYPRO AND WITHOUT WRITTEN AUTHORIZATION, MUST NOT BE COPIED OR COMMUNICATED.	
C	4725	ITEM 17 WAS 21172	DV	02-24-05	
B	3866	ITEM 8 WAS 21533	DV	12-15-03	
A	3631	RELEASE TO PRODUCTION	DV	09-19-03	
REV.	ECN	REVISION DESCRIPTION	CHKD	DATE	
PART DESCRIPTION			PART NUMBER		
RUBBER IMPELLER PUMP ASSY			G1810X		