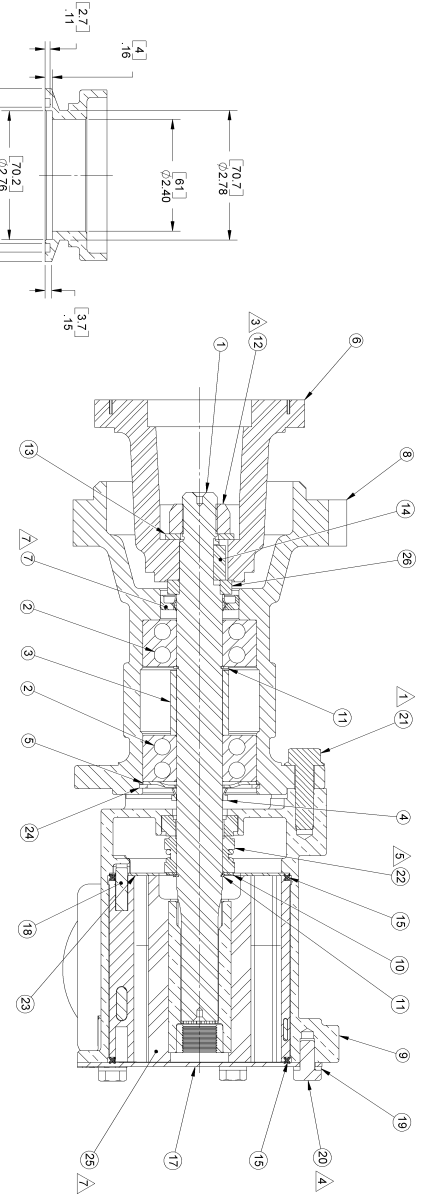


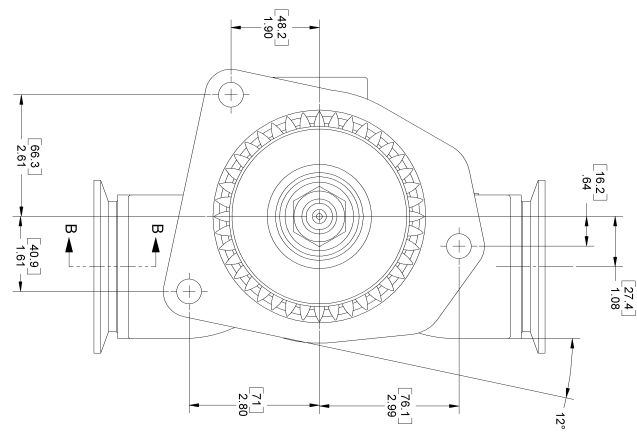
NOTES

1. APPLY LOCTITE #292 RED OR EQUIVALENT TO FLANGE BOLTS (25) AND TORQUE TO 23-28 FT-LBS
2. INSTALL IMPELLER (25) CLOCKWISE VIEWED FROM THE COVER USING SILICON LUBRICANT.
3. APPLY LOCTITE #292 RED OR EQUIVALENT TO NUT (12) AND TORQUE TO 27.5 FT-LBS.
4. TORQUE COVER BOLTS (20) TO 5-9 FT-LBS
5. MECHANICAL SEAL SEAT (22) MUST BE INSTALLED USING PAC-BASE OR EQUIVALENT LUBRICANT.
6. UHP SEAL (7) MUST BE INSTALLED COMPLETELY OLEANT AND DRY, BOTH SHAFT AND SEAL.
7. TAG (27) STAMPING INSTRUCTIONS
G18082X
DATE CODE

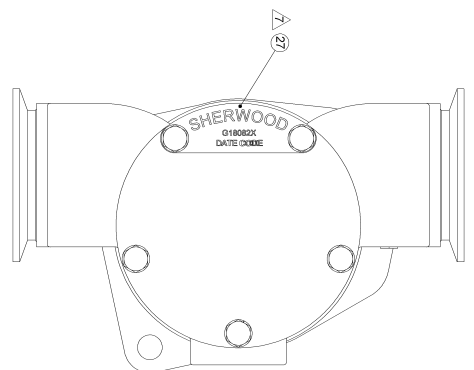
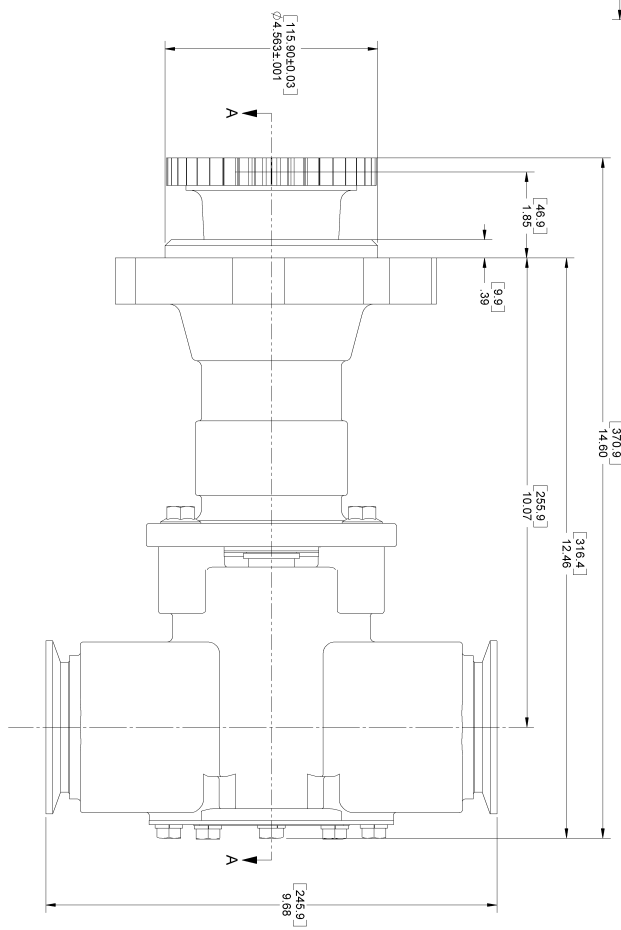


ITEM NO.	PART NUMBER	DESCRIPTION	QTY.
1	23917	SHAFT	1
2	23918	BALL BEARING	2
3	23917	SPACER	1
4	19868	V-RING	1
5	23925	SEAL	1
6	23945	SEAL	1
7	23945	SEAL	1
8	23916	BODY - MACH	1
9	24823	HOUSING - MACH	1
10	19868	WASHER-SPACER	1
11	19792	RING RETAINING EXTERNAL	2
12	23926	WASHER	1
13	22788	WASHER	1
14	22788	WASHER	1
15	22788	WASHER	1
16	21561	QUAD-RING	2
17	21533	CAM LINER	2
18	19852	COVER PLATE	1
19	15944	WASHER-LOCK	1
20	24858	HEX HD SCREW/M8X1.25 X 16MM	5
21	21172	M10 X 1.5 X 35 BOLT HEX-FLANGE	3
22	23937	SEAL MECHANICAL	1
23	19859	RING RETAINING INTERNAL	1
24	18000B	IMPELLER-RUBBER	1
25	23926	SPACER - GEAR	1
26	24854	TAG - SHERWOOD	1
27			1

SECTION B-B



SECTION AA



SHERWOOD		DRAWN BY: F.L.A. DATE: 09-12-06	
307700, American Valve Corporation, 14100 134th Avenue, Surrey, BC V2V 2A9, Canada		CHECKED BY: J.P. DATE: 09-12-06	
DESIGNED BY: J.P. DATE: 09-12-06		APPROVED BY: J.P. DATE: 09-12-06	
SCALE: 1:1		SHEET NUMBER: 34	
PART DESCRIPTION: RUBBER IMPELLER PUMP ASSY		MATERIAL: 304 STAINLESS STEEL	
TAG: G18082X		REV: A	