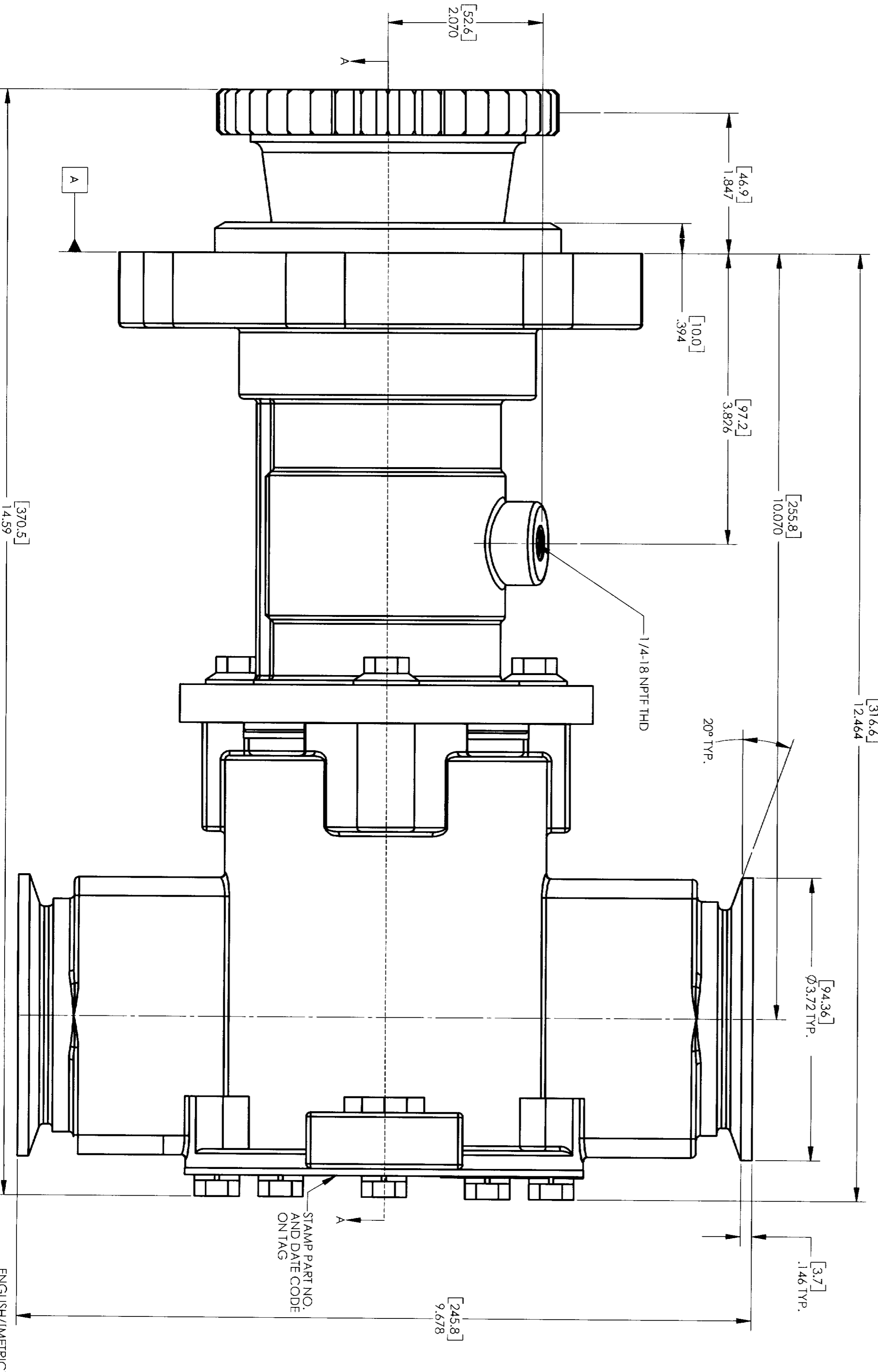
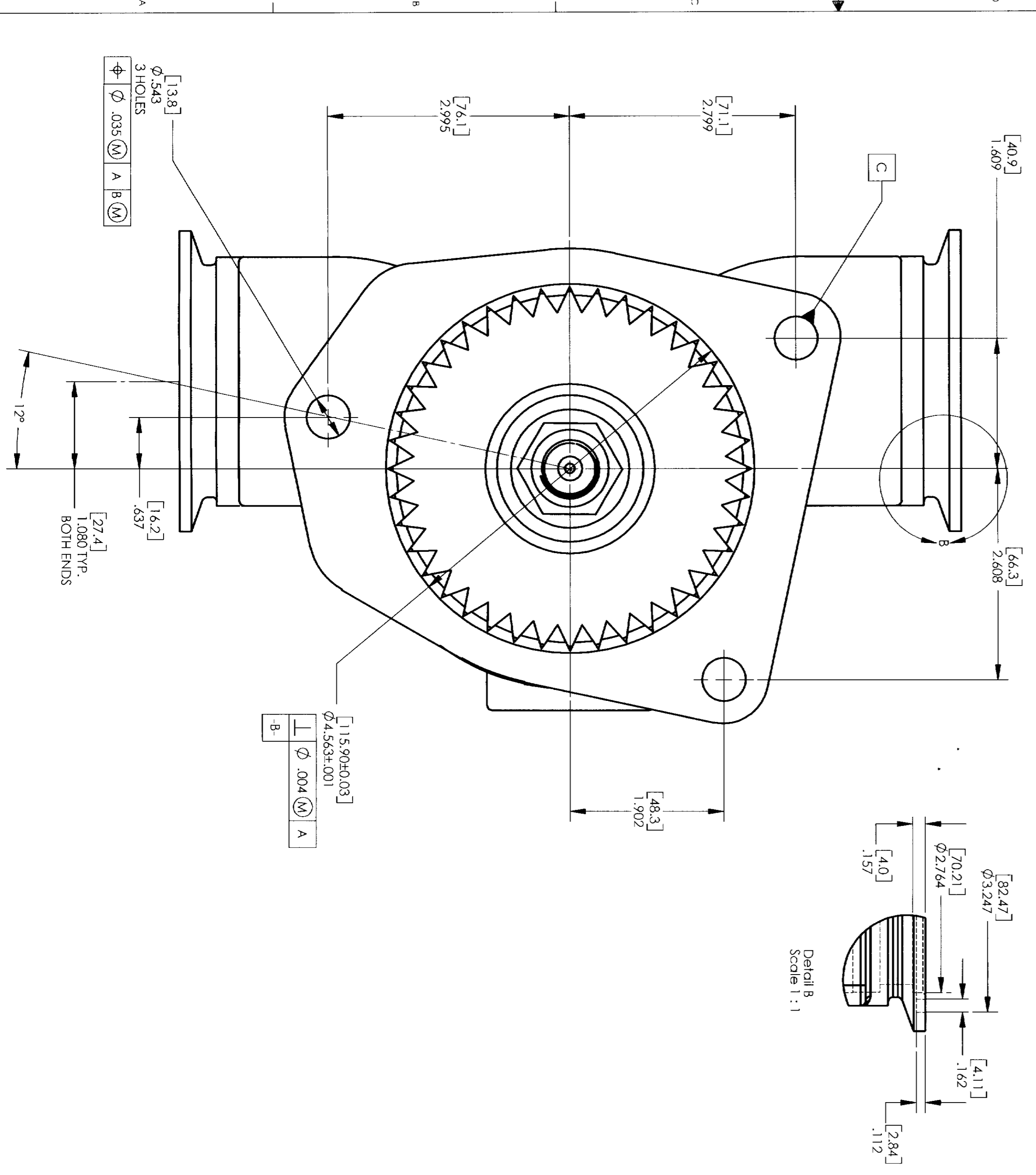
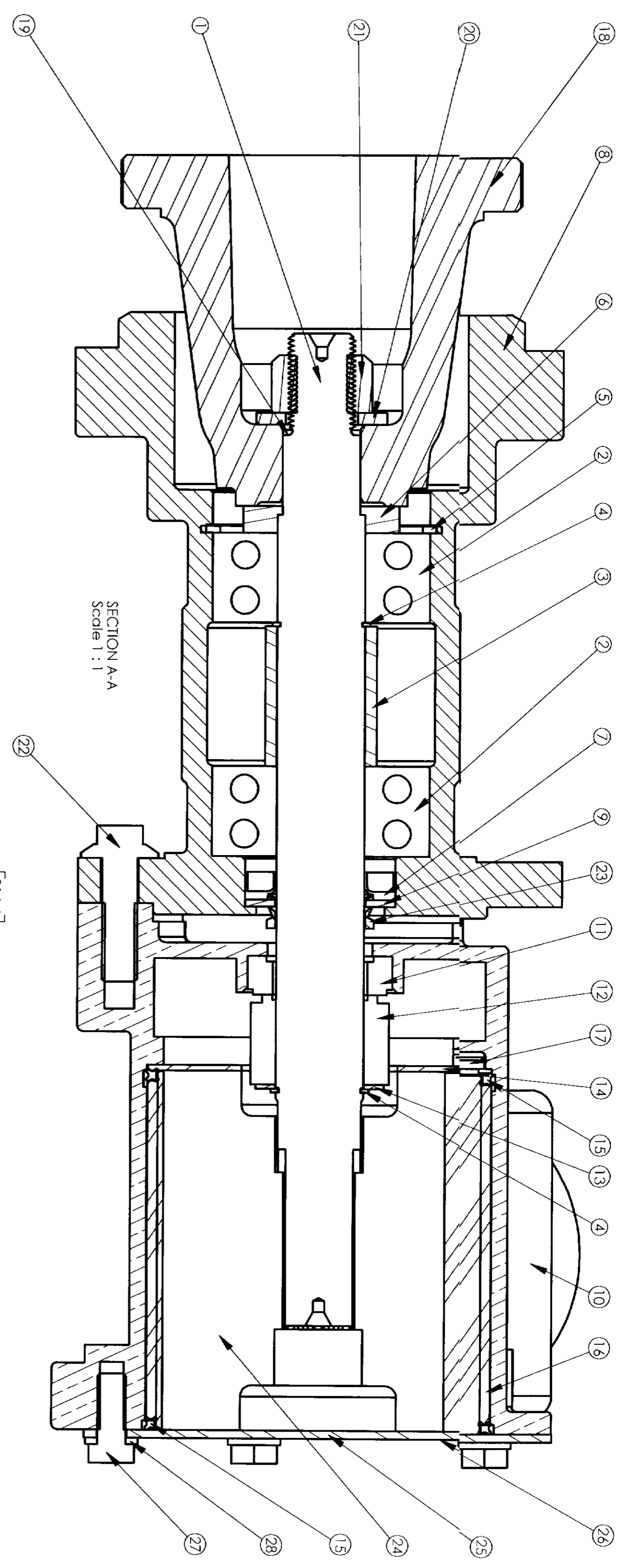


ITEM NO.	QTY.	PART NO.	DESCRIPTION
1	1	22782	SHAFT
2	2	19871	BEARING
3	1	22787	SPACER
4	2	19762	EXT. RET. RING
5	1	19867	INT. RET. RING
6	1	22779	GEAR SPACER
7	1	23045	LIP SEAL
8	1	22442	BODY
9	1	19855	WASHER
10	1	22762	HOUSING
11	1	19876	SEAT SEAT
12	1	19877	MECHANICAL SEAL
13	1	19866	WASHER
14	1	19836	WEAR PLATE
15	2	21561	QUAD. RING
16	2	21583	CAM LINER
17	1	21566	PIN
18	1	22789	GEAR
19	1	22791	KEY
20	1	22788	WASHER
21	1	22790	NUT
22	3	21172	FLANGE BOLT
23	1	19868	V-RING
24	1	18000	IMPELLER
25	1	19837	COVER PLATE
26	1	19959	TAG
27	5	19626	BOLT
28	5	15944	LOCK WASHER
29			
30	SERV	21484	MINOR SERVICE KIT
31	SERV	21495	MAJOR SERVICE KIT
32	SERV	22810	BODY ASSEMBLY KIT
33	SERV	22811	COMPLETE SERVICE KIT
34			

NOTE:  
 1) APPLY LOCTITE #262 (RED) OR EQUIVALENT TO FLANGE BOLT (22) AND TORQUE TO 25 FT-LBS.  
 2) INSTALL IMPELLER CLOCKWISE VIEWED FROM COVER USING SILICON LUBRICANT FOR IMPELLER AND IMPELLER LINER.  
 3) APPLY LOCTITE #270 (RED) OR EQUIVALENT TO NUT (21) AND TORQUE TO 273 FT-LBS.  
 4) STATIC TEST MECHANICAL SEAL AND SEAT FOR LEAKS USING 15.45 PSI WATER PRESSURE.  
 5) BOLT (22) TORQUE TO 5.8 FT-LBS.  
 6) MECHANICAL SEAL (11 & 12) MUST BE INSTALLED USING PAC-EASE OR EQUIVALENT LUBRICANT.  
 7) LIP SEAL (7) MUST BE INSTALLED COMPLETELY DRY. NO GREASE LUBRICANT ON SHAFT OR LIP.



REV	DESCRIPTION	ENGR	DATE
E	WAS 19869 LIP SEAL	2099	TIG 04-22-97
D	REBRAWN WITH NEW CAD SYSTEM	2055	TIG 03-21-97

NAME: RUBBER IMPPELLER  
 PROJECT # 1193  
 SHEPHERD  
 A DIVISION OF HYPO CORPORATION  
 RUBBER IMPPELLER PUMP  
 G1808