

PARTS LIST

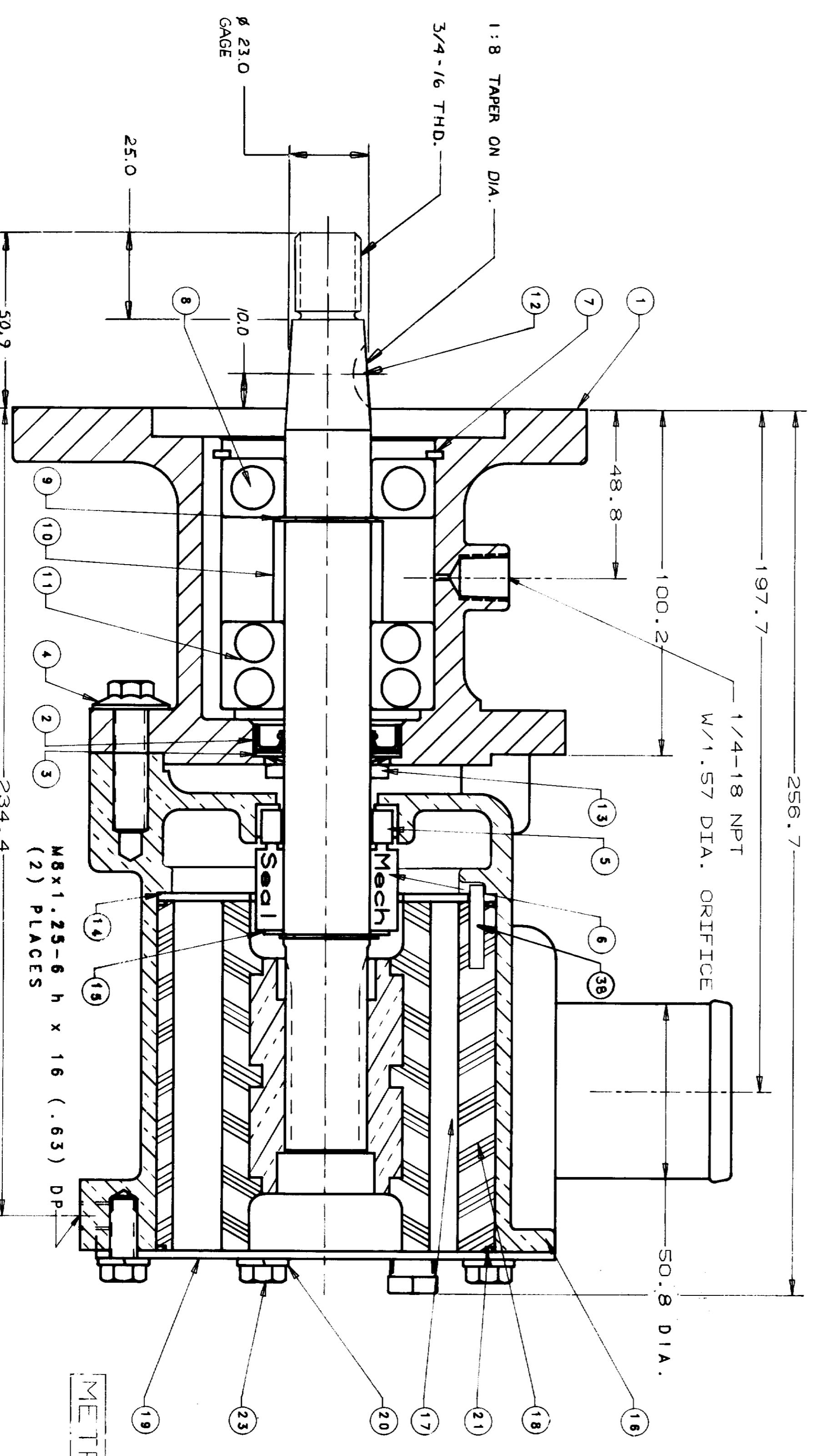
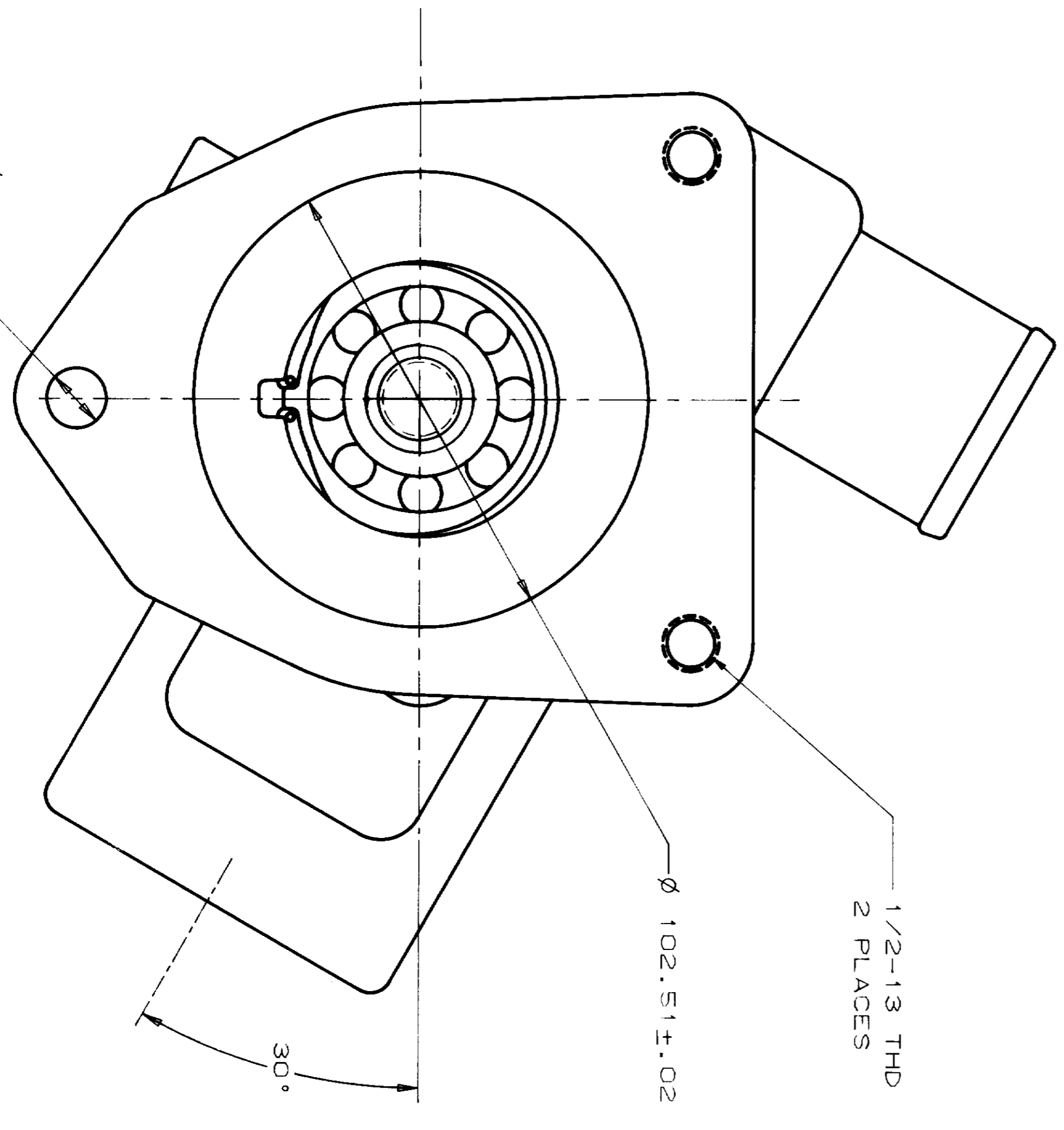
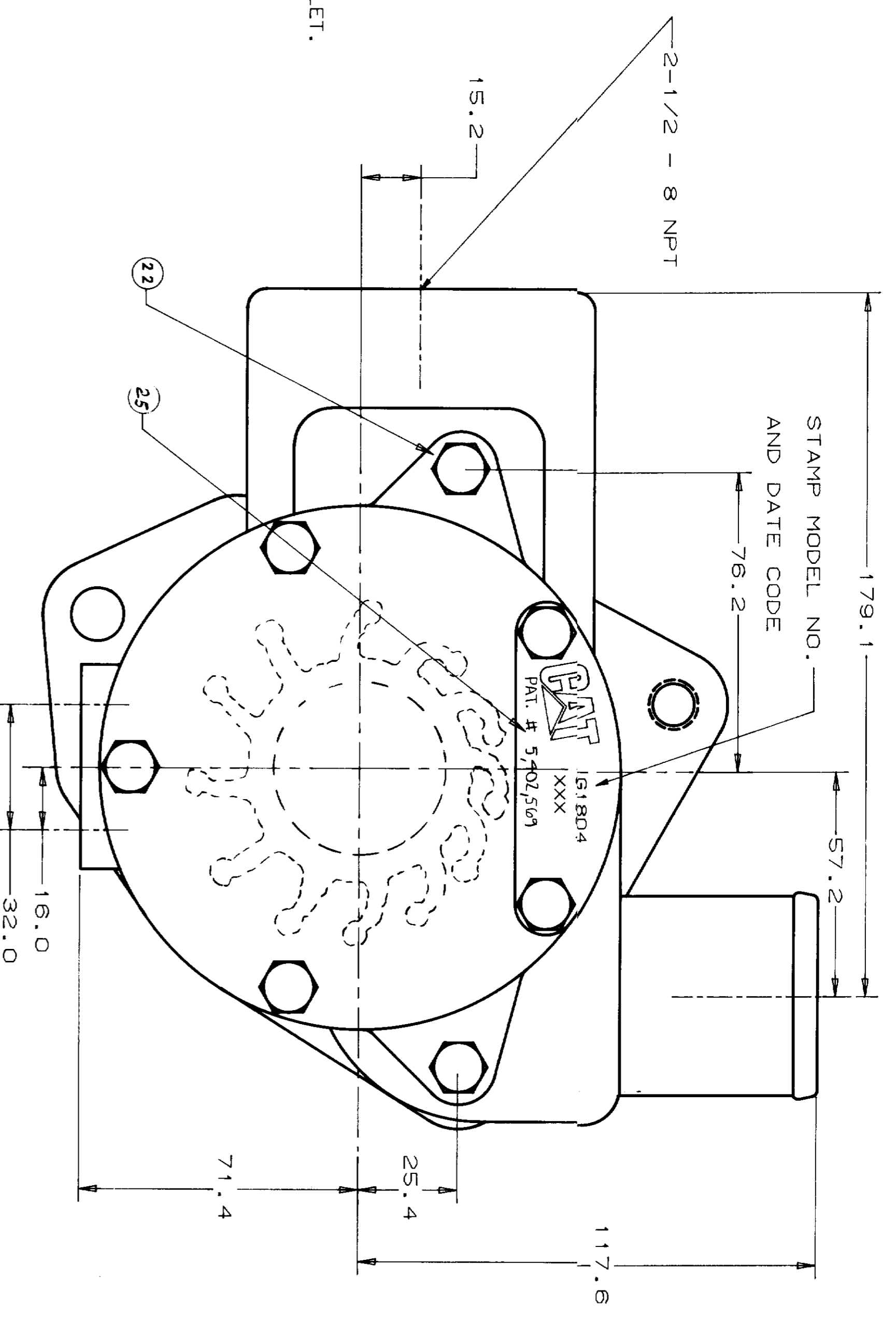
ITEM	PART NO.	DESCRIPTION	QTY.
01	21476	BODY	1
02	19869	LIP SEAL	1
03	19835	BACK-UP WASHER	1
04	21172	M10X35 LG. FLANGE BOLT	3
05	19876	SEAL SEAT	1
06	19877	MECHANICAL SEAL	1
07	19867	INT. RET. RING	1
08	19872	BEARING	1
09	19762	EXT. RET. RING	2
10	19870	SPACER	1
11	19871	BEARING, DBL ROW	1
12	21526	SHAFT	1
13	19868	V-RING	1
14	19836	WEARPLATE	1
15	19866	BACK-UP WASHER	1
16	21565	HOUSING	1
17	18000	IMPELLER	1
18	21533	CAMLINER	2
19	19837	COVERPLATE	1
20	15944	LOCKWASHER	5
21	21561	QUAD-RING	2
22	00339	HEX DRAIN PLUG	2
23	19626	M8X20 LG HEX HEAD	5
24	19878	SEAL ASS'Y	1
25	19959	TAG	1
26	19911	CAM LINER SEALENT	A/R
27	21321	TAPER CAP	1
28	21322	NPT PIPE CAP	1
29	21320	STRAIGHT CAP	1
30	18448	NPT PIPE CAP	1
31	21319	INSERT	2
32	14122	PADS	6
33	14120	TUBE CONTAINER	1

34	21493	BODY ASS'Y	S
35	21494	MIN. SERVICE KIT	S
36	21495	MAJ. SERVICE KIT	S
37	21496	COMP. SERVICE KIT	S
38	21566	PIN	1

- NOTES:
- 1) 2) DEGREASE DET. 16 AND DET. 4 PRIOR TO ASSEMBLY WITH LOCTITE PRIMER 25556. COAT THREADS OF DET. 4 WITH LOCTITE NO. 262 (RED) OR EQUIVALENT.
  - 3) INSTALL DET. 14 WITH CRESCENT MOON SLOT POSITIONED AT THE TOP OF THE INSIDE BORE OF DET. 16.
  - 4) INSTALL O-RING DET. 21 AGAINST FLANGE ON DET. 18. APPLY A 6 mm (1/4 in.) BEAD OF CAMLINER SEALENT DET. 26 ALONG THE CENTERLINE ON THE TOP AND THE BOTTOM OF DET. 18 PRIOR TO INSTALLATION IN DET. 16.
  - 5) SHIPPING-(2) INSERTS X (9) CELLS/INSERT = (18) PUMPS/PALLET.
  - 6) INSTALL IMPELLER VANES FLIPPED AS SHOWN

TORQUE VALUES

DET. 4	35 N.m (25 ft.lb)
DET. 23	11 N.m (8 ft.lb)



METRIC

**SHERWOOD**  
A DIVISION OF HYDRO CORPORATION  
3331 E. JEFFERSON AVE., DETROIT, MICHIGAN 48202

REV.	DESCRIPTION	DATE	BY	CHK
A	WAS 21380	5/23/94	T/G	
B	WAS 19689	6/15/94	T/G	
C	WAS 21758	11/28/94	T/G	

**PUMP ASS'Y**

DWG NO. G1804

PROJ. NO. 130