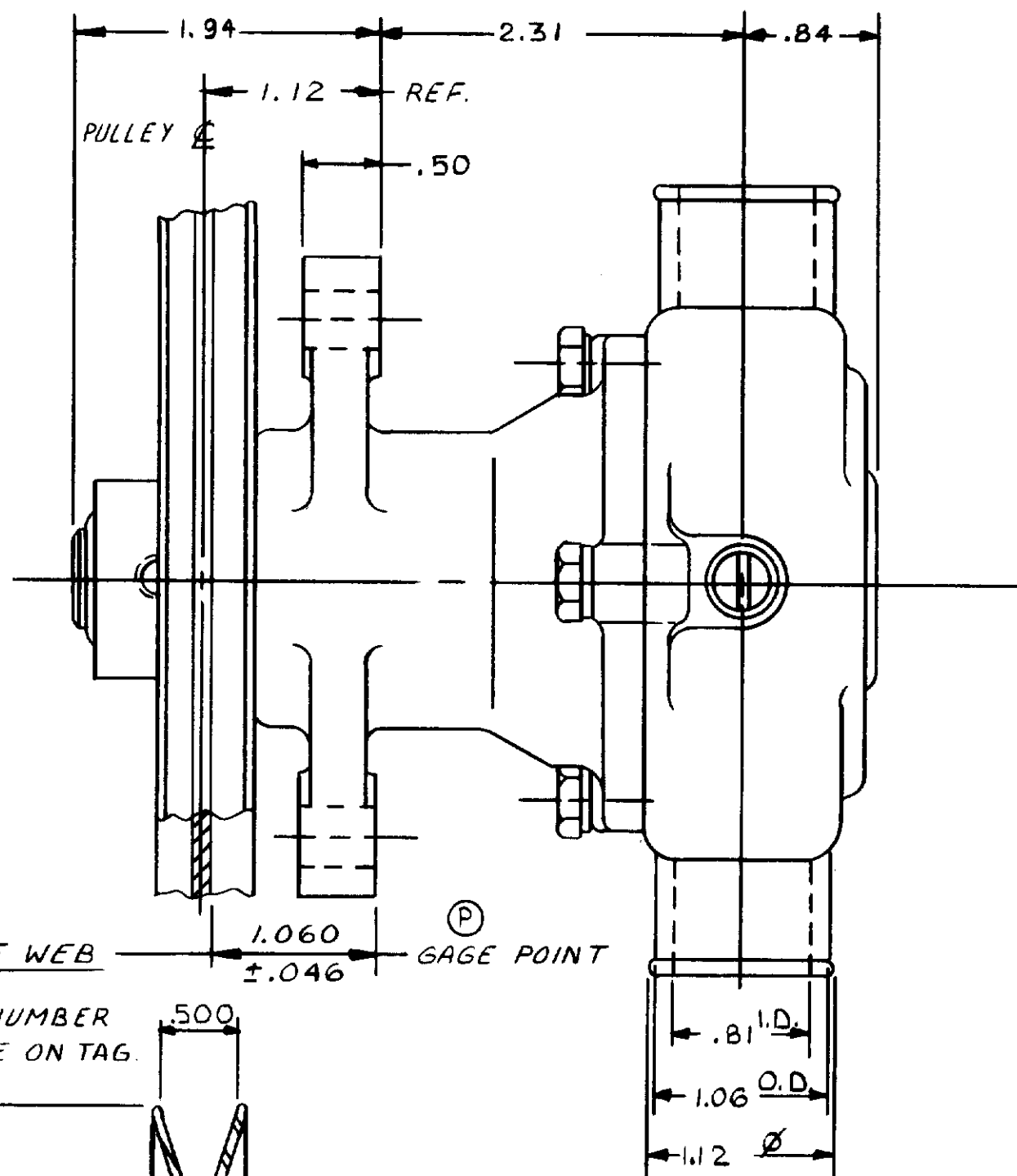


**PARTS LIST**

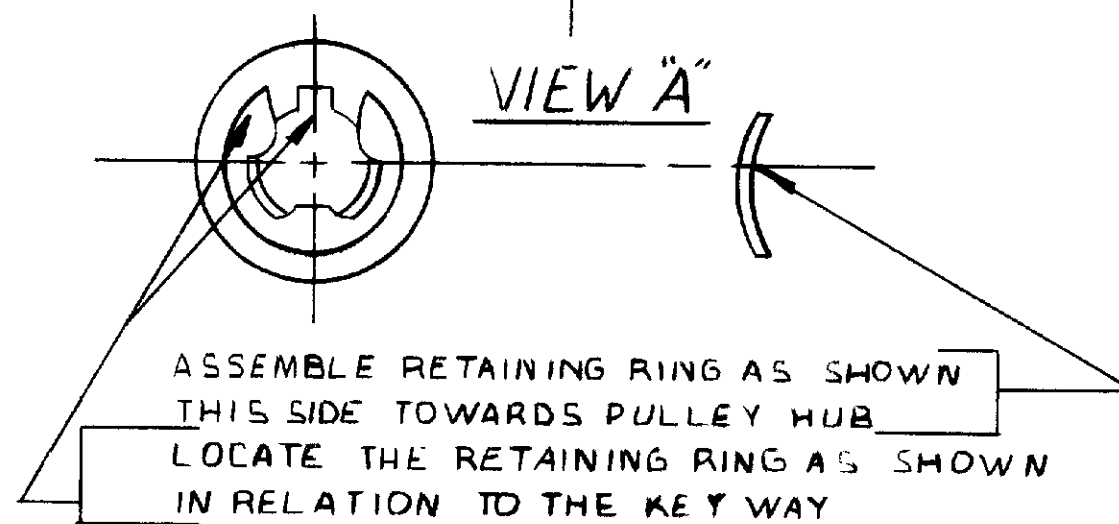
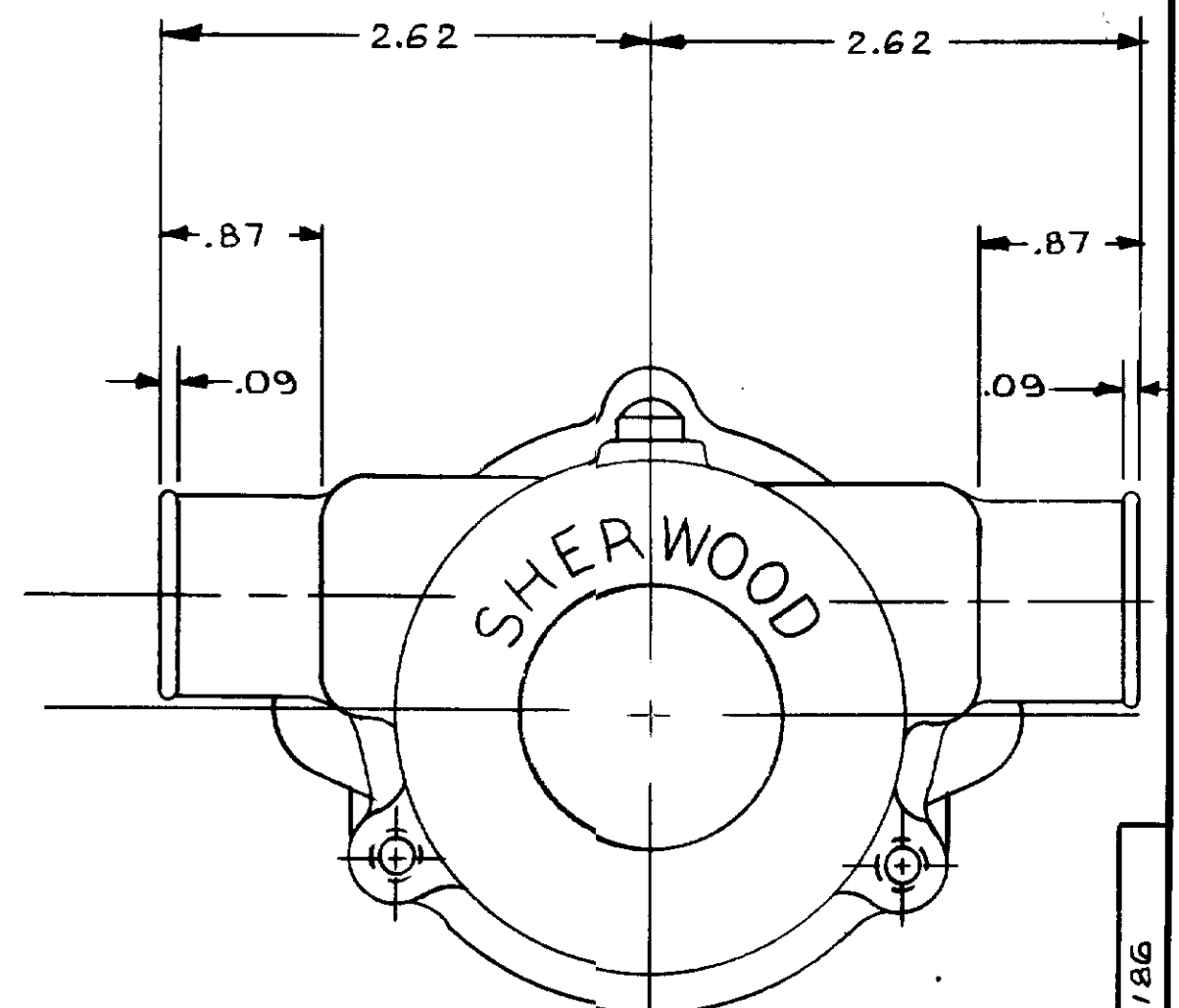
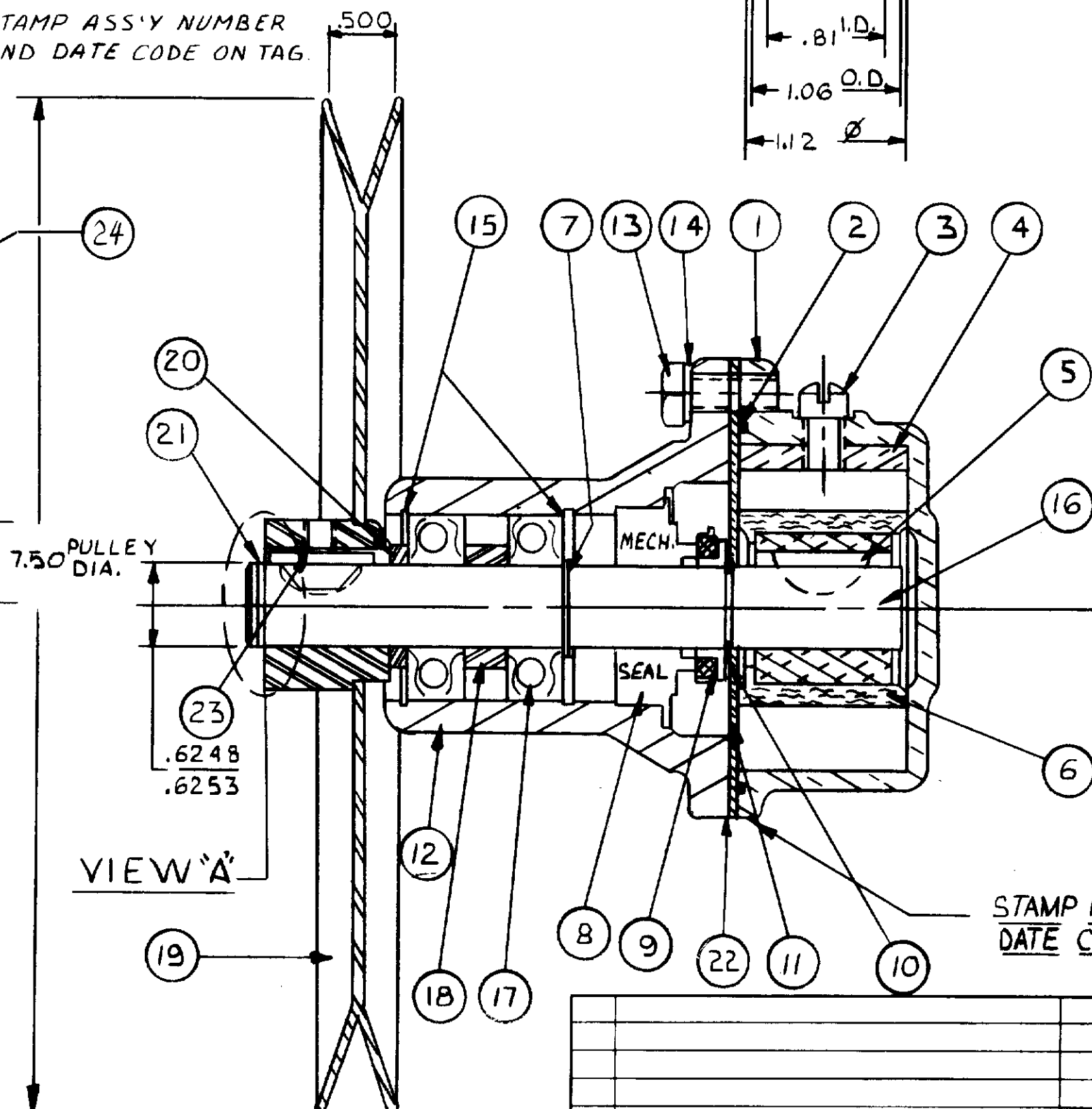
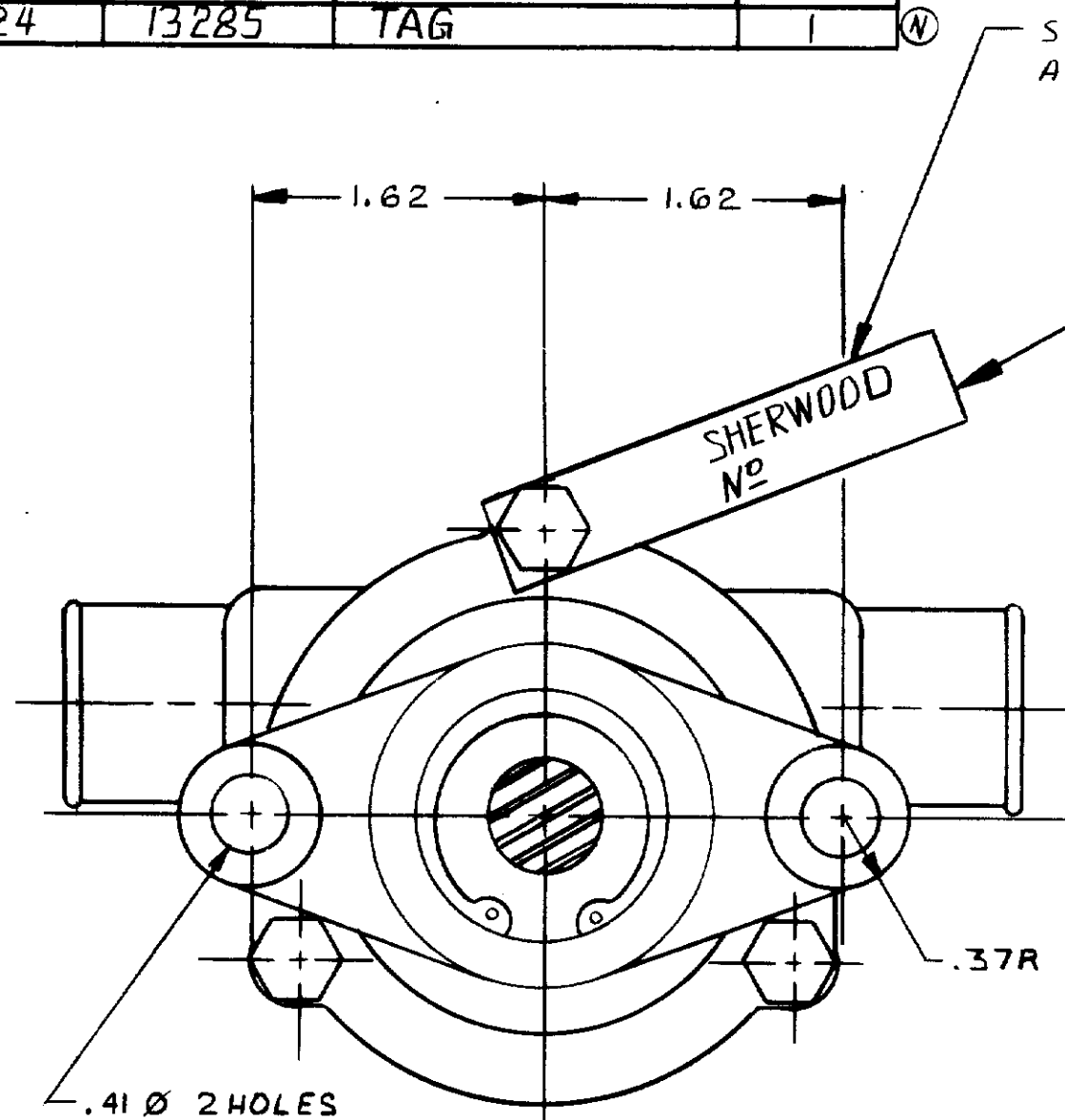
ITEM	PART NO.	DESCRIPTION	REQ'D
1	12303	HOUSING	1
2	12231	"O" RING GASKET	1
3	10515	SCREW	1
4	10627	CAM	1
5	4432	DRIVE KEY	1
6	9959	IMPELLER	1
7	4258	RET. RING	2
8	12314	MECH. SEAL	1
9	12256	SEAL SEAT	1
10	4264	THRUST WASHER	1
11	12856	END PLATE	1
12	12324	BODY	1
13	12857	CAPSCREW	3
14	12710	LOCKWASHER	3
15	4259	RET. RING	2
16	12233	SHAFT	1
17	12211	BALL BEARING	2
18	5133	SPACER BEARING	1
19	12323	PULLEY ASS'Y	1
20	12304	SPACER	1
21	12305	RET. RING	1
22	12855	GASKET	1
23	12622	NON-ROK KEY	1
24	13285	TAG	1



SERVICE ASS'Y NO.	COMPONENT ITEM NO'S	G-15
① SEAL & SEAT ASS'Y NO. 12859	8 & 9	

**PACKAGING:** ①  
 № 11516 PALLET 1 REQ'D  
 14120 TUBE CONTAINER 1 REQ'D  
 14122 PADS 6 REQ'D  
 18026 INSERT 4 REQ'D  
 16 PUMPS / LAYER X 4 LAYERS = 64 PUMPS PER PALLET

**INDIVIDUAL PUMP BOXING:**  
 № 17631 CARTON O 1 REQ'D  
 12209 LABEL 1 REQ'D



STAMP PART NO. & DATE CODE HERE

REV.	DESCRIPTION	APPR	DATE
P	GAGE DIMENSION ADDED	KB	4-16-91
O	12859 WAS 12322	SH	7/31/90
N	TAG 13285 ADDED	SH	10/27/86
M	REDRAWN WITHOUT CHANGE	KB	10-7-86

UNLESS OTHERWISE SPECIFIED  
 CAST DIMENSIONS ± .02  
 FILLETS & RADII .06  
 FINISH STOCK .07  
 MACHINING TOLERANCE, INCHES  
 XX ± .01, XXX ± .005  
 SURFACE ROUGHNESS  
 ANGLES ± 0° 30'  
 CORNER BREAKS .01 MAX.  
 || PARALLISM .001  
 □ FLATNESS .001  
 ⊥ SQUARENESS .001  
 ⊙ CONCENTRICITY .001  
 ○ ROUNDNESS .0002  
 ↗ RUNOUT .001

**SHERWOOD**  
 A DIVISION OF HYPRO CORPORATION  
 6331 E. JEFFERSON AVE. • DETROIT, MICHIGAN 48207

DRAFTSMAN	DATE	CHECKER	DATE	ASS'Y NO.
TJ	4-27-72	RBM	7-20-72	

TITLE: **PUMP ASSEMBLY RUBBER IMPELLER**

MATERIAL: SEE DETAILS  
 DWG NO.: G-15

FLOW CURVE G-15

PROJ. NO. 186