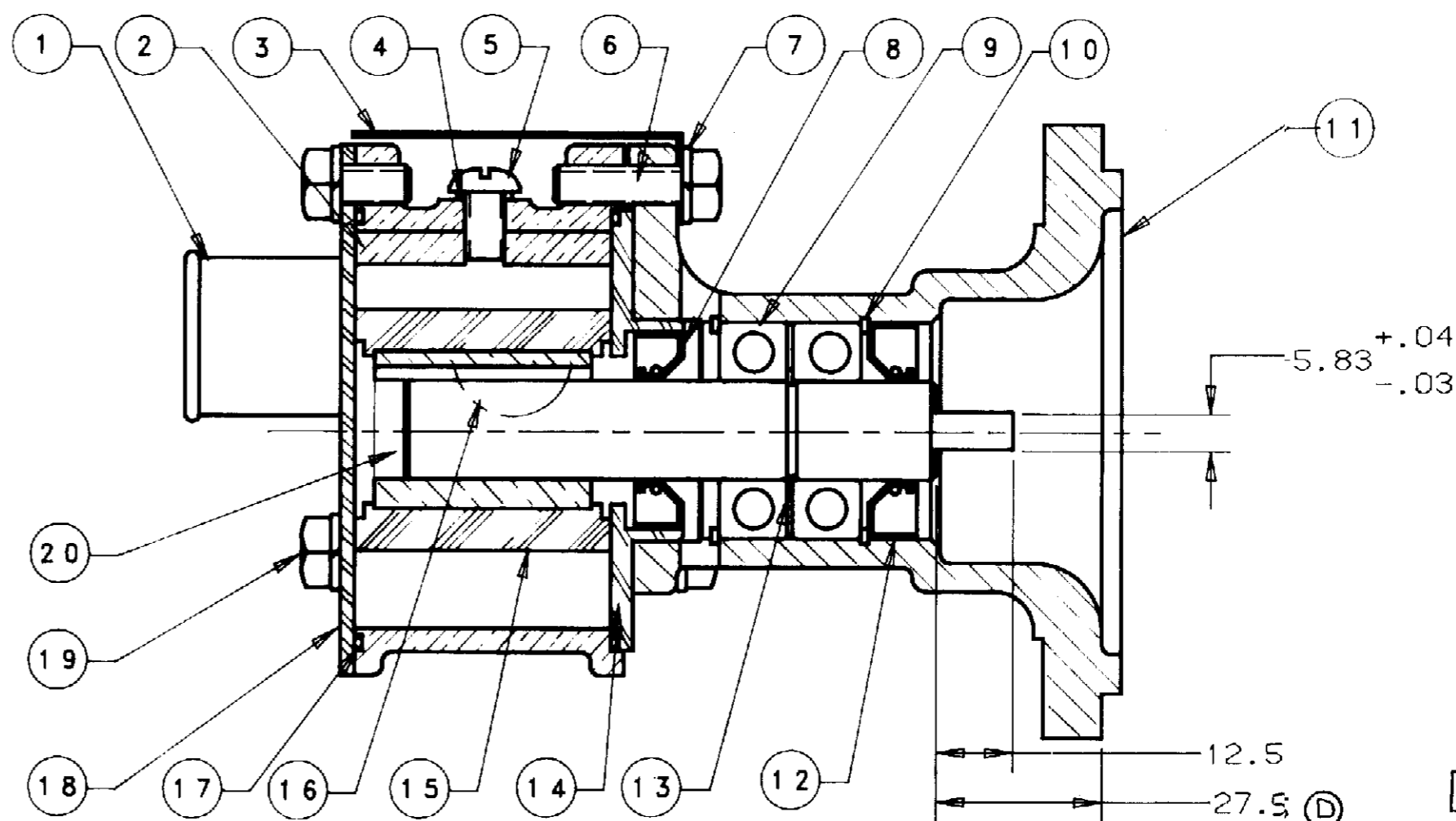
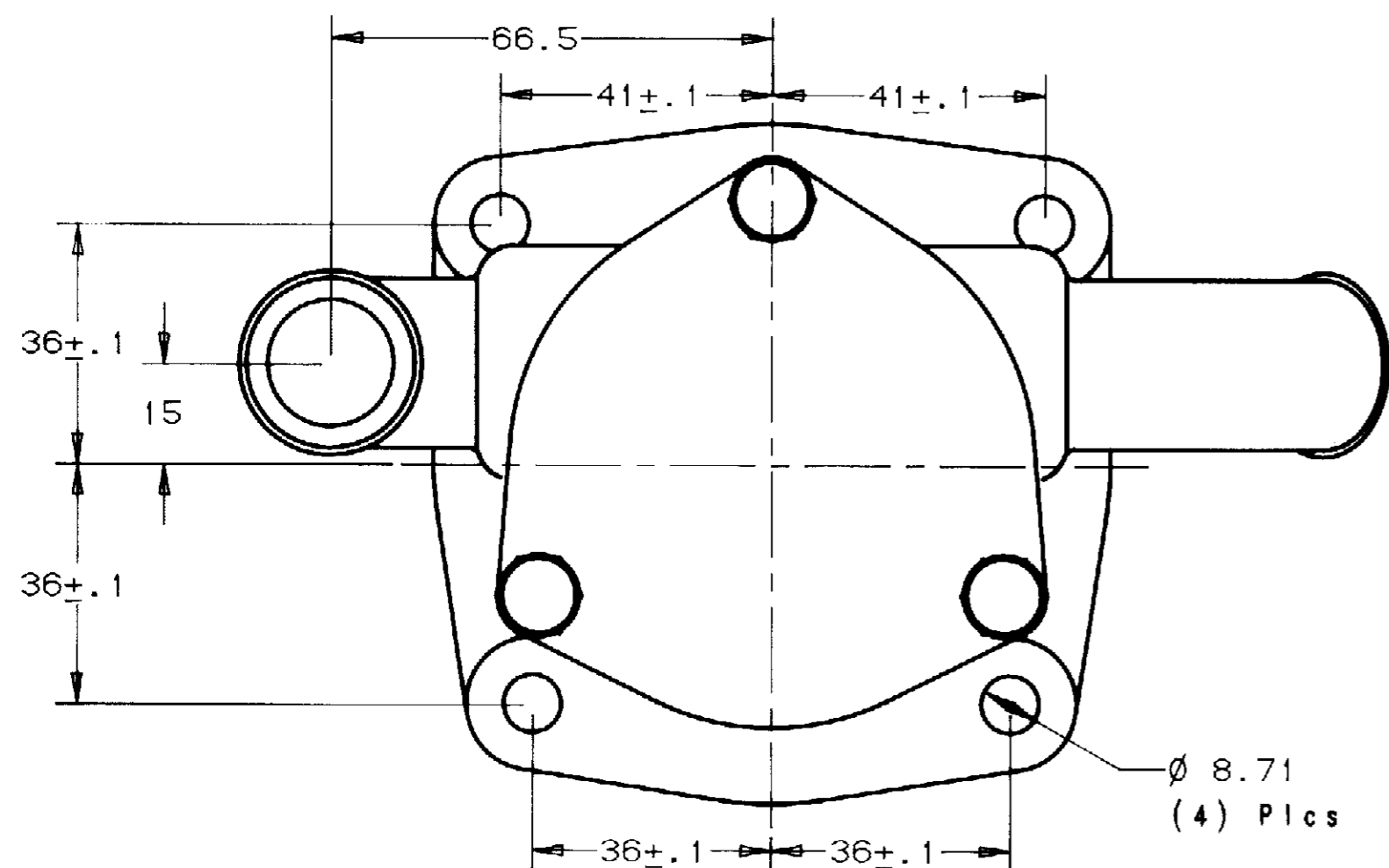
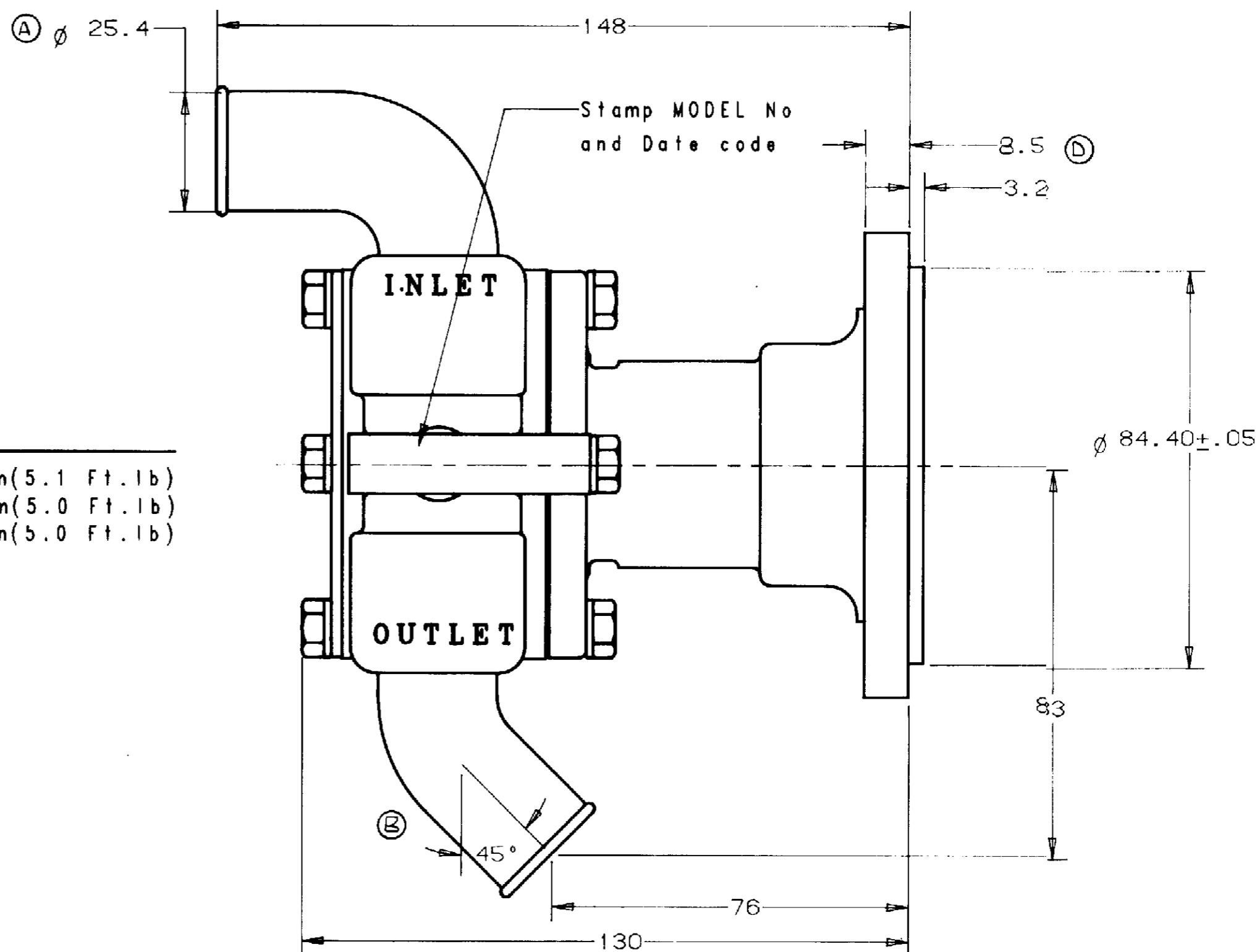


PARTS LIST

ITEM	PART No.	DESCRIPTION	QTY
01	21150	HOUSING	1
02	10929	CAM	1
03	13285	TAG	1
04	19996	SEAL WASHER	1
05	19995	CAM SCREW	1
06	12857	HEX HD. BOLT 1/4-20x7/8	3
07	12710	LOCKWASHER - 1/4	6
08	21209	LIP SEAL	1
09	12211	BEARING	2
10	4259	INT. RET. RING	2
11	21122	BODY	1
12	21208	LIP SEAL	1
13	4258	EXT. RET. RING	1
14	21163	WEAR PLATE	1
15	10615	IMPELLER (NO LUB. SLOTS)	1
16	4432	KEY	1
17	12231	O-RING	2
18	21173	COVER	1
19	19297	HEX HD. BOLT 1/4-20x1/2	3
20	21207	SHAFT	1
21			
22			
23	17653	BAG	1
24	17659	CARTON	1
25	12209	LABEL	1
26			
27	21182	MINOR SERVICE KIT	SERV.
28	21184	MAJOR SERVICE KIT	SERV.

TORQUE VALUES

DET.No 5	6.9 N.m (5.1 Ft. lb)
DET.No 6	6.8 N.m (5.0 Ft. lb)
DET.No 19	6.8 N.m (5.0 Ft. lb)



Notes:

- Details No 6 are to be tightened in an even manner, resulting in a consistent gap between Detail No 12 and Detail No 1.
- USE IMPELLER WITH NO LUBRICATION SLOTS ONLY.

REV.	DESCRIPTION	APPR	DATE
F	ADDED NOTE	TLG	3-29-98
E	WAS # 5133	KRS	6-2-98
D	WAS 9.5/27.0	KRS	5-7-98
C	FINALIZED DIMENSIONS	KRS	5-7-98
B	REVISED OUTLET PORT to 45°	KRS	5-7-98
A	WAS ϕ 31 PORT	GM	2-25-98

UNLESS OTHERWISE SPECIFIED
 CAST DIMENSIONS \pm .02
 FILLETS & RADII .08
 FINISH STOCK .07
 MACHINING TOLERANCE, INCHES
 XX \pm .01 XXX \pm .005
 SURFACE ROUGHNESS
 ANGLES \pm 0° 30'
 CORNER BREAKS .01 MAX.

FLATNESS .0015 IN/IN
 SQUARENESS .0015
 CONCENTRICITY .002
 ROUNDNESS .0005
 RUNOUT .002

SHERWOOD
 A DIVISION OF HYPRO CORPORATION
 6331 E. JEFFERSON AVE. • DETROIT, MICHIGAN 48207

DRAFTSMAN	DATE	CHECKER	DATE	ASSY NO.
GM	12-29-92	BAM	1-4-93	

TITLE: RUBBER IMPELLER PUMP ASSEMBLY

MATERIAL: SEE DETAILS

DWG NO: G1004

PROJ. NO: 1069