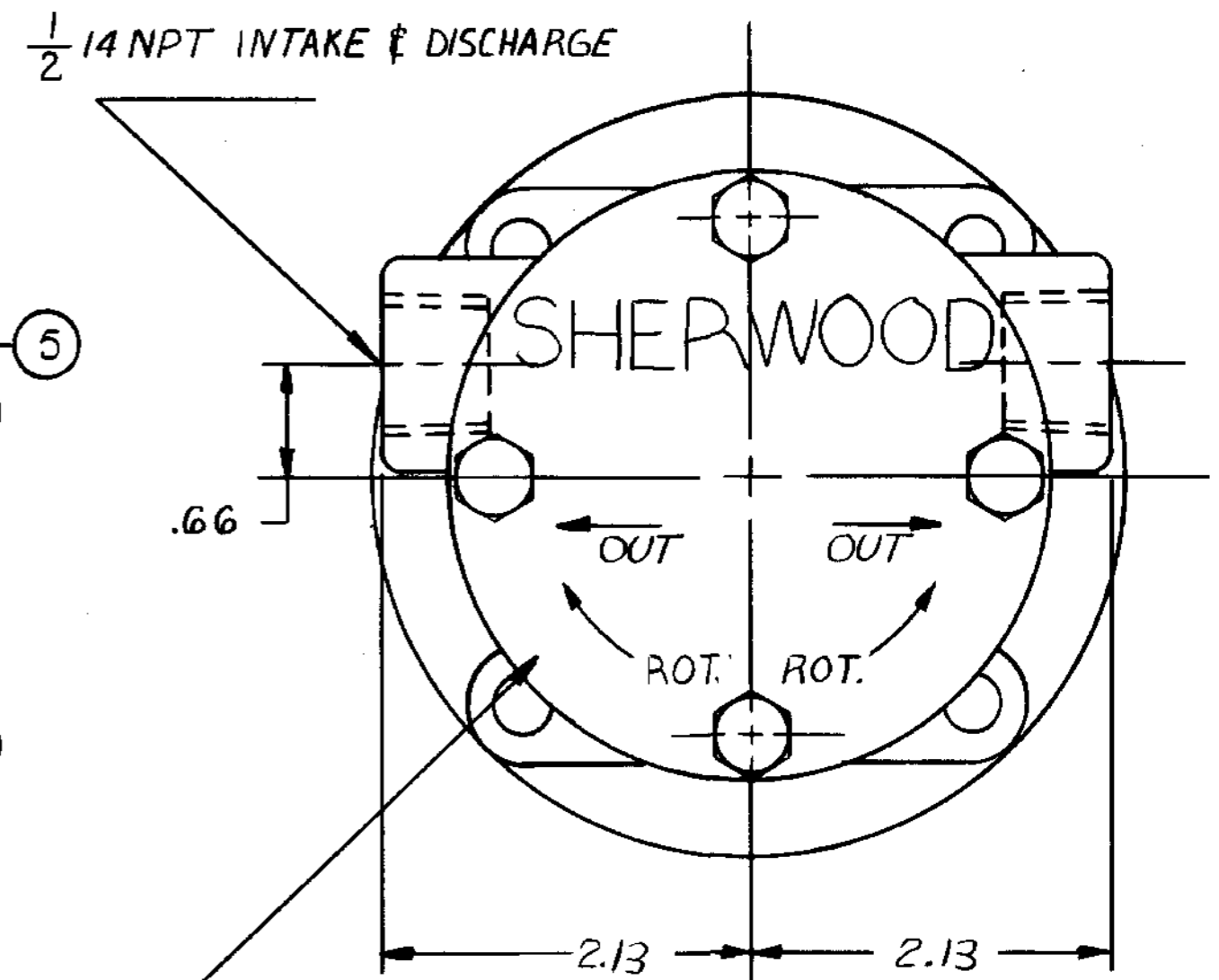
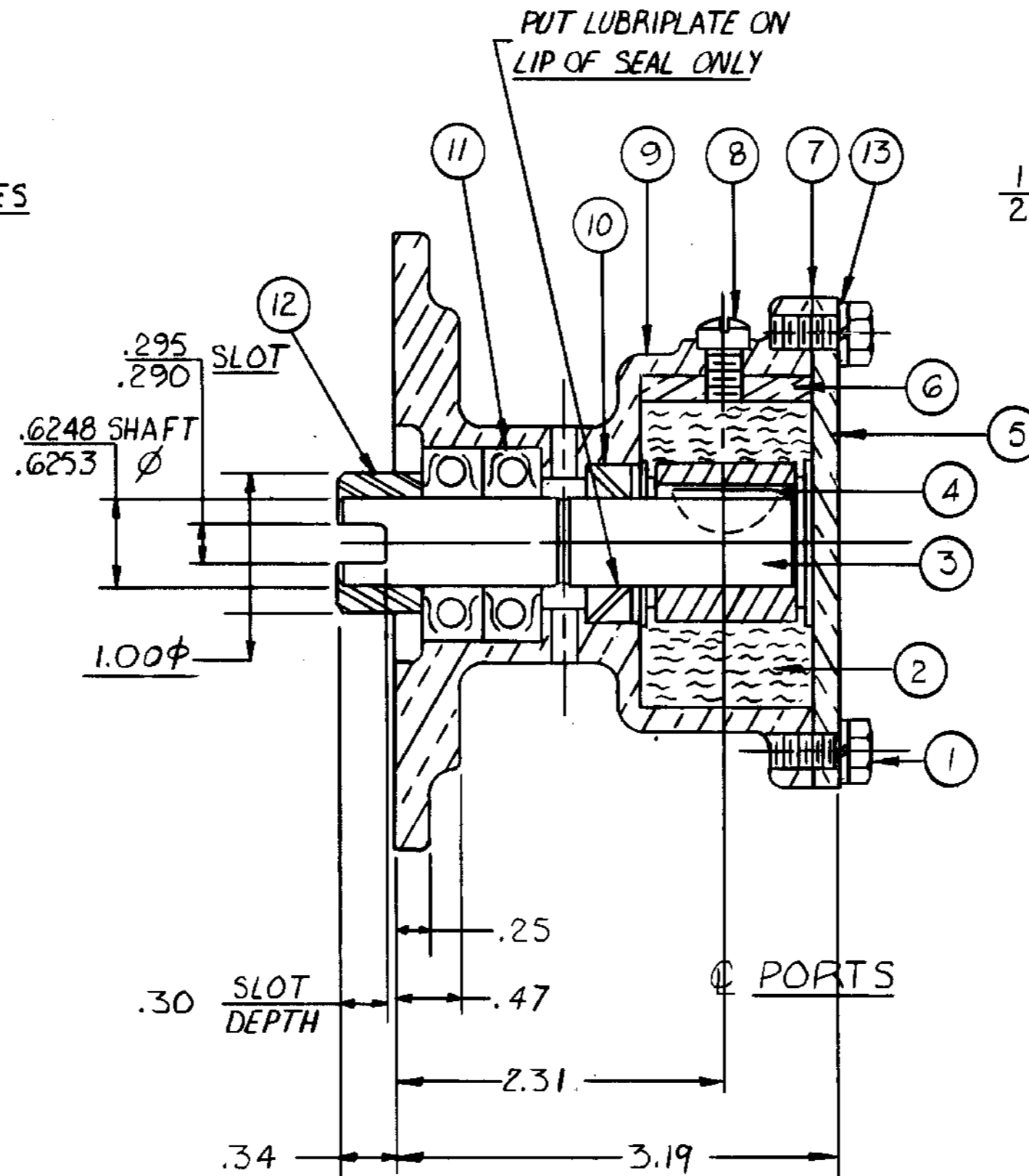
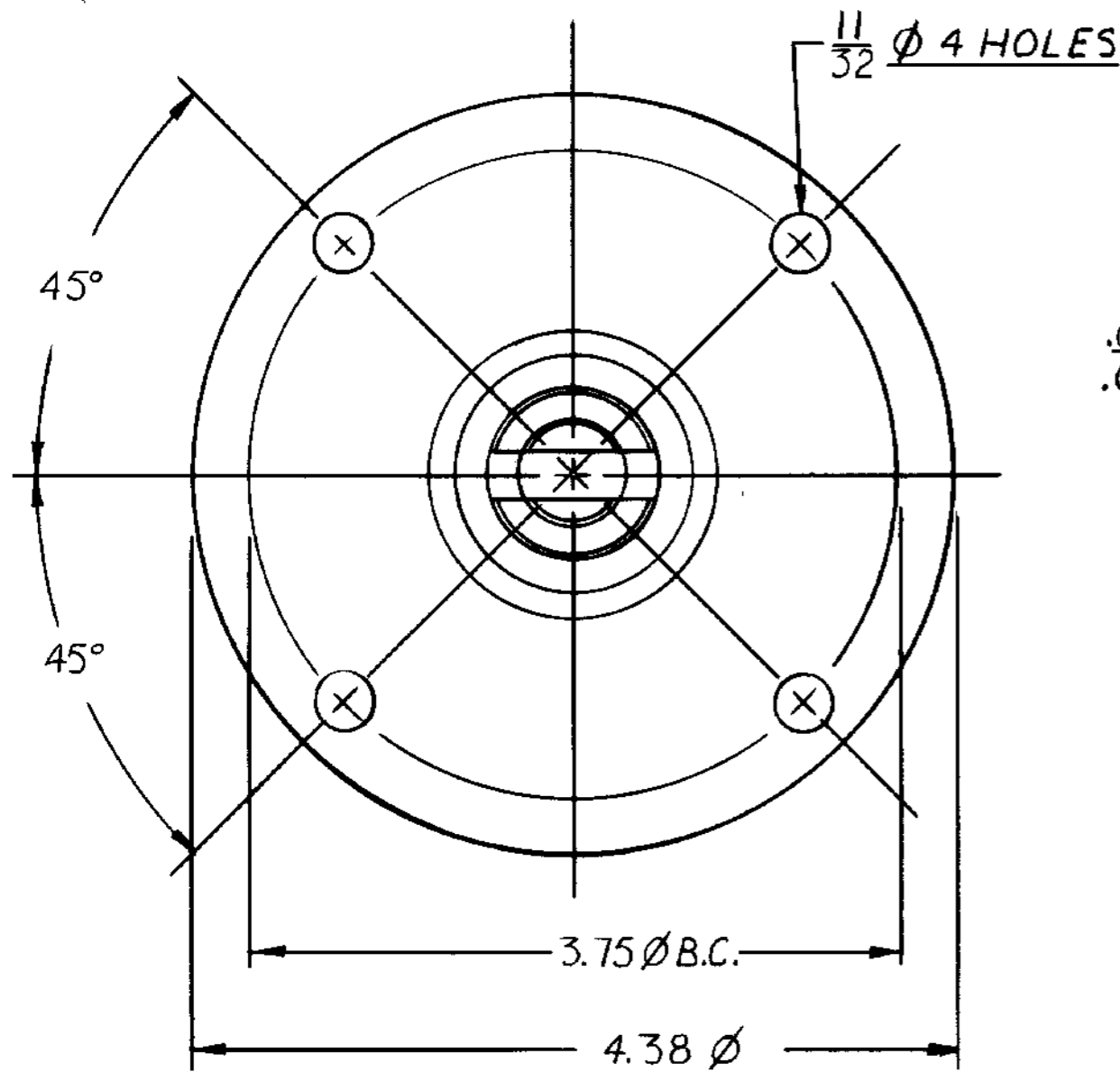


**PARTS LIST**

| ITEM | PART NO. | DESCRIPTION           | REQ'D |
|------|----------|-----------------------|-------|
| 1    | 19297    | SCREW HEX. HD. 1/4-20 | 4     |
| 2    | 9959     | IMPELLER              | 1     |
| 3    | 12441    | SHAFT                 | 1     |
| 4    | 4432     | KEY                   | 1     |
| 5    | 12220    | COVER                 | 1     |
| 6    | 10072    | CAM                   | 1     |
| 7    | 11360-A  | GASKET                | 1     |
| 8    | 10515    | SCREW FIL. HD. 1/4-20 | 1     |
| 9    | 12210    | BODY                  | 1     |
| 10   | 10514    | SEAL-LIP              | 1     |
| 11   | 12211    | BEARING-BALL          | 2     |
| 12   | 12442    | COUPLING              | 1     |
| 13   | 12710    | LOCKWASHER            | 4     |

| SERVICE PART NO.                | COMPONENT ITEM NO. |
|---------------------------------|--------------------|
| MAJOR SERVICE KIT NO. 12221     | 2.7.10, 4 11(2)    |
| SHAFT & COUPLING ASSY NO. 12444 | 3 & 12             |

NOTE:  
THE IMPELLER MUST BE LUBRICATED WITH SILICONE BEFORE ASSEMBLY



STAMP DATE CODE & PART NO. IN AREA SHOWN BEFORE COVER IS ASSEMBLED ON PUMP.

CAPACITY  
10 GPM AT 1500 R.P.M.

UNIT PACKAGING:  
 N<sup>o</sup> 17644 CARTON 1 REQ'D  
 12209 LABEL 1 REQ'D  
 14474 JIFFY BAG #3 1 REQ'D

FLOW CURVE 72001R-72002R

F-35 FLOW CURVE

| REV. | DESCRIPTION  | APPR | DATE    |
|------|--|------|---------|
| Q    | GASKET WAS 19886                                   | TLG  | 9-16-92 |
| P    | GASKET WAS 11360-A                                 | KB   | 3-20-92 |
| O    | N <sup>o</sup> 19297 SCREW WAS N <sup>o</sup> 9919 | AvB  | 5/9/90  |
| N    | REDRAWN WITHOUT CHANGE                             | KB   | 2-24-87 |

UNLESS OTHERWISE SPECIFIED  
 CAST DIMENSIONS ± .02  
 FILLETS & RADII .06  
 FINISH STOCK .07  
 MACHINING TOLERANCE, INCHES  
 XX ± .01, XXX ± .005  
 SURFACE ROUGHNESS  
 ANGLES ± 0° 30'  
 CORNER BREAKS .01 MAX.  
 PARALLISM .001  
 FLATNESS .001  
 SQUARENESS .001  
 CONCENTRICITY .001  
 ROUNDNESS .0002  
 RUNOUT .001

**SHERWOOD**  
 A DIVISION OF HYPRO CORPORATION  
 6331 E. JEFFERSON AVE. • DETROIT, MICHIGAN 48207

| DRAFTSMAN | DATE     | CHECKER | DATE    | ASS'Y NO. |
|-----------|----------|---------|---------|-----------|
| TJ        | 10-26-71 | RBM     | 11-3-71 |           |

TITLE  
**RUBBER IMPELLER PUMP ASS'Y**

MATERIAL  
 SEE DETAILS

DWG. NO.  
 F-85

PROJ. NO. 180