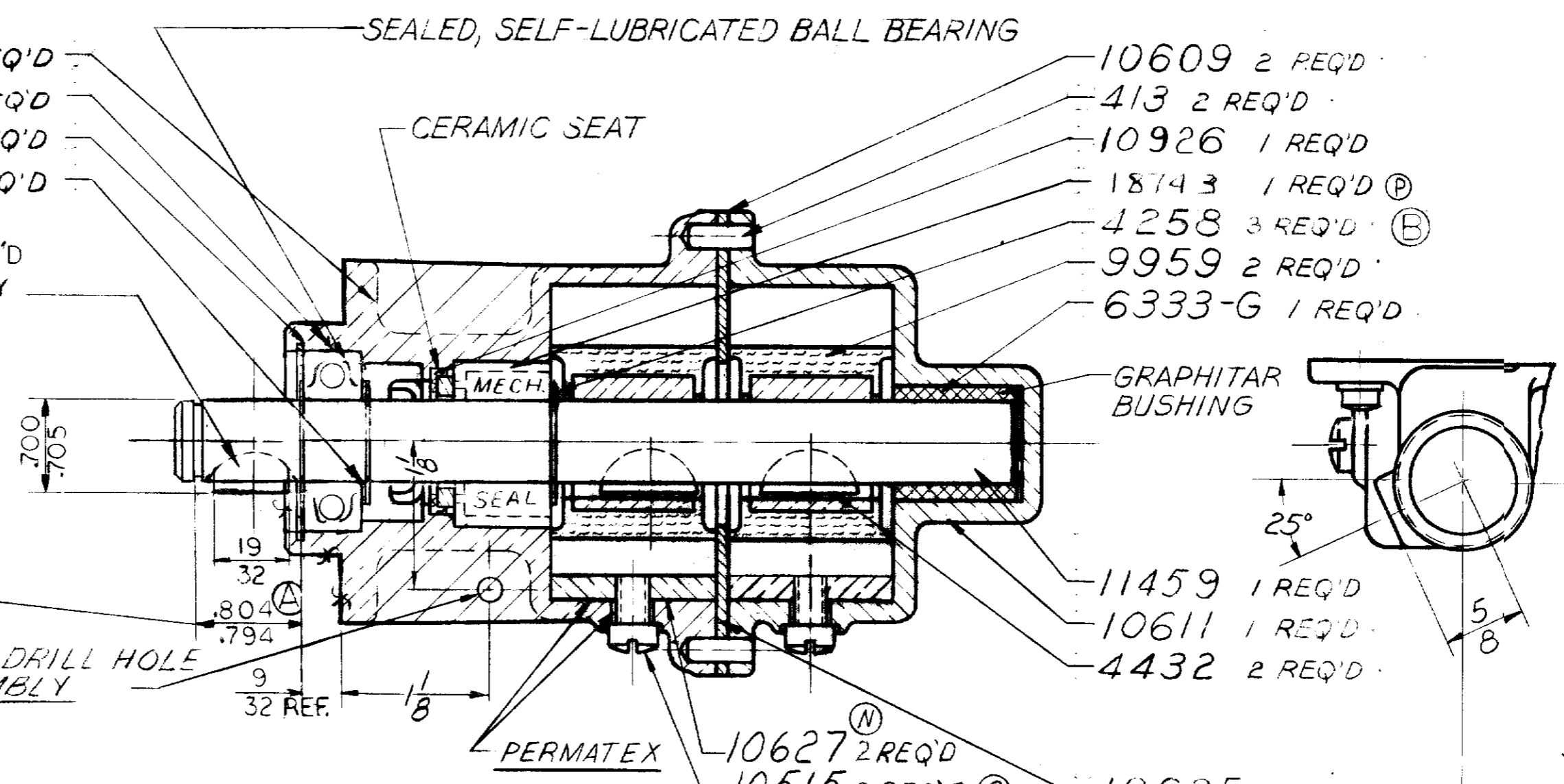


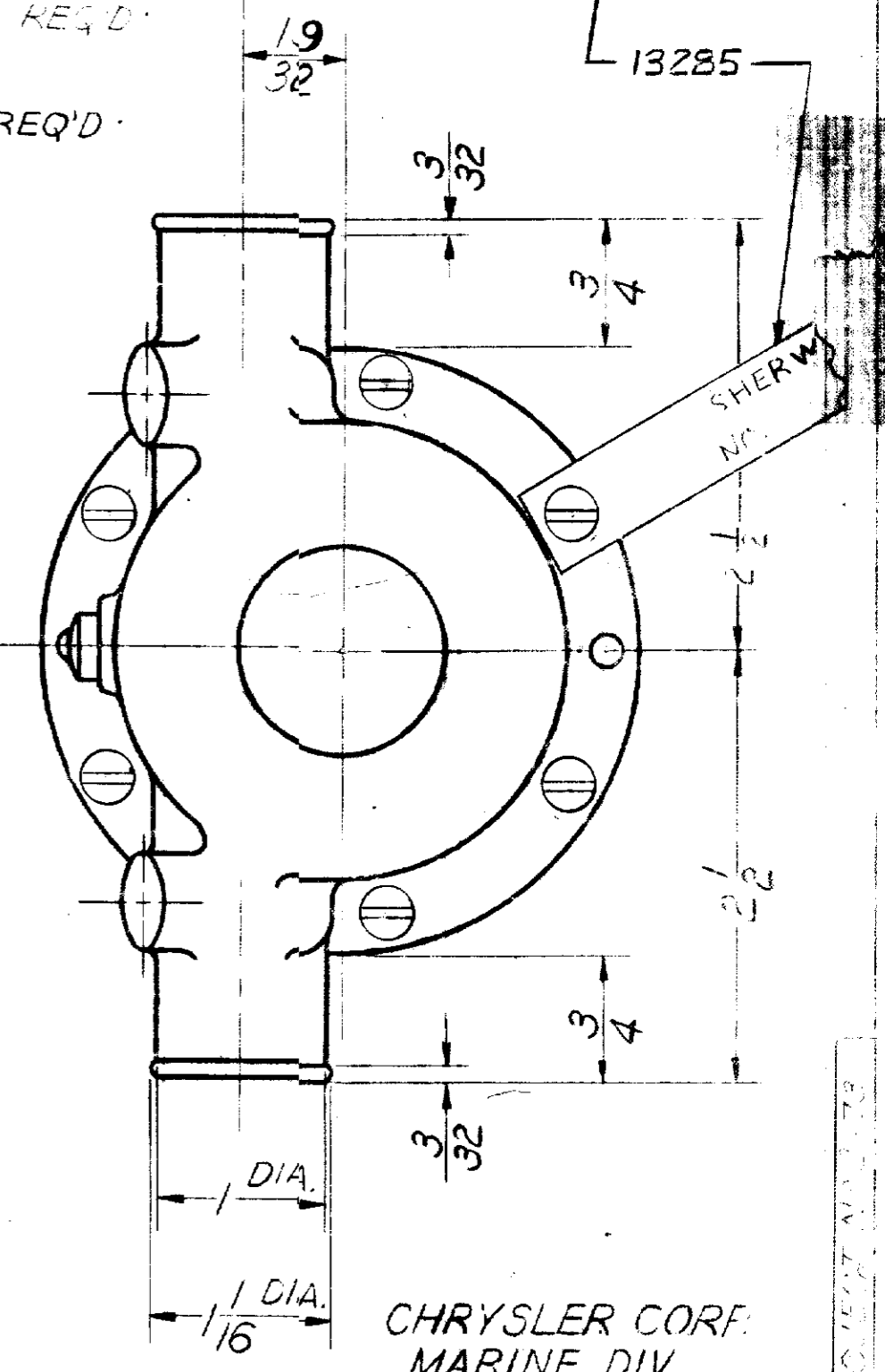
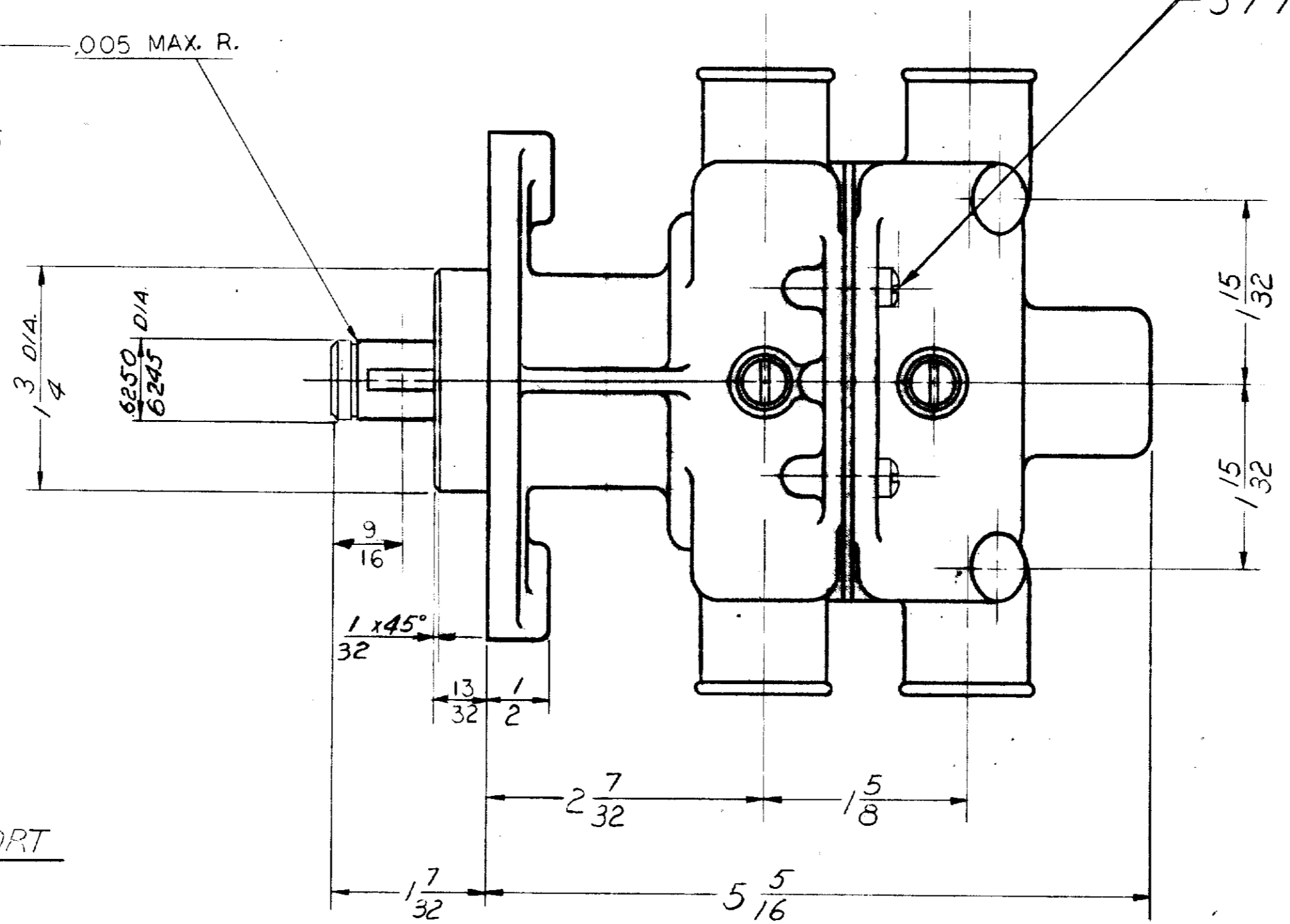
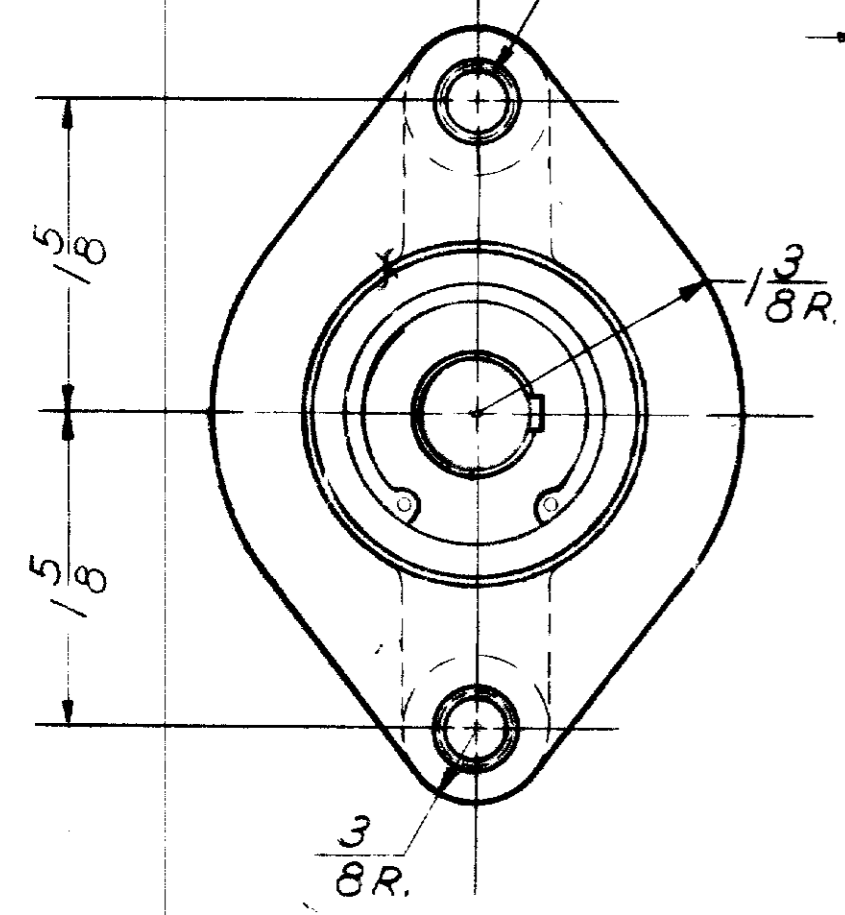
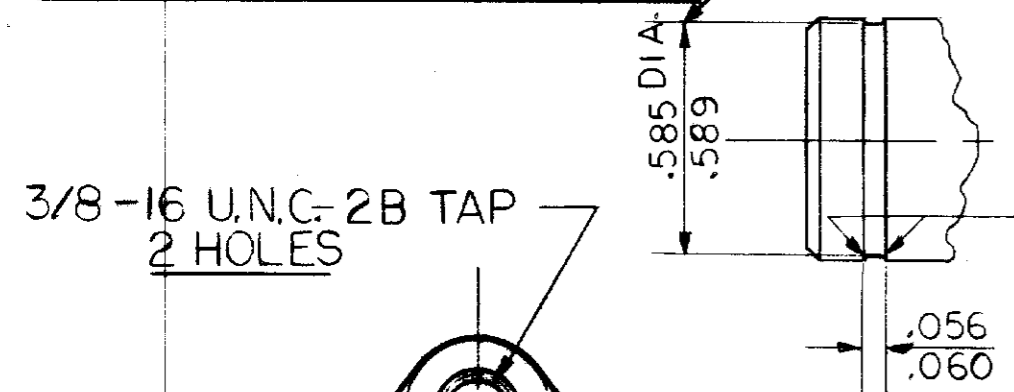
SERVICE PART NO.	COMPONENT PART NO'S	NO. REQ'D
11458	11454	1
BODY	413	2
10619	10611	1
COVER	6333-G	1
10927	10523	1
SEAL & SEAT	10926	1
MAJOR REPAIR KIT # 12793 (F)		
MINOR REPAIR KIT # 10650 (G)		

- 11454 1 REQ'D
- 4257 1 REQ'D
- 4259 1 REQ'D
- 11456 1 REQ'D
- 11515 1 REQ'D
- MODIFIED NO. 9 WOODRUFF KEY
- SEALED, SELF-LUBRICATED BALL BEARING
- CERAMIC SEAT
- MECH.
- SEAL
- PERMATEX
- 10627 2 REQ'D (N)
- 10515 2 REQ'D (O)
- 10625 1 REQ'D
- 5771 6 REQ'D
- 10609 2 REQ'D
- 413 2 REQ'D
- 10926 1 REQ'D
- 1874 3 1 REQ'D (P)
- 4258 3 REQ'D (B)
- 9959 2 REQ'D
- 6333-G 1 REQ'D
- GRAPHITAR BUSHING
- 11459 1 REQ'D
- 10611 1 REQ'D
- 4432 2 REQ'D



TO EXTERNAL RETAINING RING
 3/16 IDENTIFICATION DRILL HOLE AFTER FINAL ASSEMBLY

THIS DIA MUST BE CONCENTRIC WITH
 .6245/.6250 DIA. WITHIN .002 FIR



STAMP PUMP ASSEMBLY NO. D75 AND DATE CODE ON TAG, ATTACH WITH SCREW

CAPACITY
 20.0 G.P.M. @ 3600 R.P.M., EACH PORT

CHRYSLER CORP.
 MARINE DIV.
 NO. 2847632

- (H) FOR SERVICE:
 PACKAGE THIS PUMP ASSEMBLY IN A
 # Y BOX 1 REQ'D
 # 2 JIFFY BAG 1 REQ'D
 # 12209 LABEL 1 REQ'D
- (I) # 13472 SERVICE BULLETIN 1 REQ'D

P	SEAL WAS 10523	KB	8-16-69	RI	2-1-82
O	NO. 10515 SCREW WAS NO. 10922, 1 REQ'D	ML	7/18/68	RM	7-31-78
N	NO. 10627 CAM WAS NO. 10924, 1 REQ'D	ML	7/18/68	RM	10-21-71
M	DELETED 10822	ML	7/18/68	RM	7/26/72
L	DELETED 10824	ML	7/18/68	RM	4-24-72
K	ADDED TAG NO. 13285	RJW	5/5/80	T.J.	10/25/69
J	REMOVED LOCKWASHERS	RJW	5/5/80	P.	4/1/69
I	NO. 13472 SERVICE BULLETIN ADDED				
H	PACKAGING NOTE ADDED				
G	10650 KIT REVISED				
F	12793 KIT ADDED				
E	12300 KIT REMOVE				
D	NOTES ADDED				
C	MAJOR SERVICE KIT ADDED				
B	WAS 2 REQ'D				
A	WAS 7/8 TO INNER RACE				

CURVE NO. 73005R

MAXIMOL PUMPS
 A DIVISION OF HYPO CORPORATION
 8801 E. JEFFERSON AVE. - DETROIT, MICHIGAN 48217

IMPELLER PUMP ASSY SEE DETAILS

REV	DATE	BY
B.P.	6-18-68	
A.V.B.	6-28-68	

PART NO. D-75