

AMPS AT 27 VOLTS				
IMPELLER DIAMETER	10 GPM	15 GPM	20 GPM	25 GPM
3.44"	7.4	8.2	9.1	9.6
3.25	6.8	7.8	8.3	8.9
3.00	6.2	6.8	7.3	--
2.75	5.4	5.9	6.3	--

10 Amps Maximum at 27 volts.

AMPS AT 13.5 VOLTS DC				
IMPELLER DIAMETER	10 GPM	15 GPM	20 GPM	25 GPM
3.44"	14.0	15.0	16.5	18.5
3.25	12.5	13.5	15.0	16.0
3.00	11.5	12.5	13.0	--
2.75	10.5	11.0	12.0	--

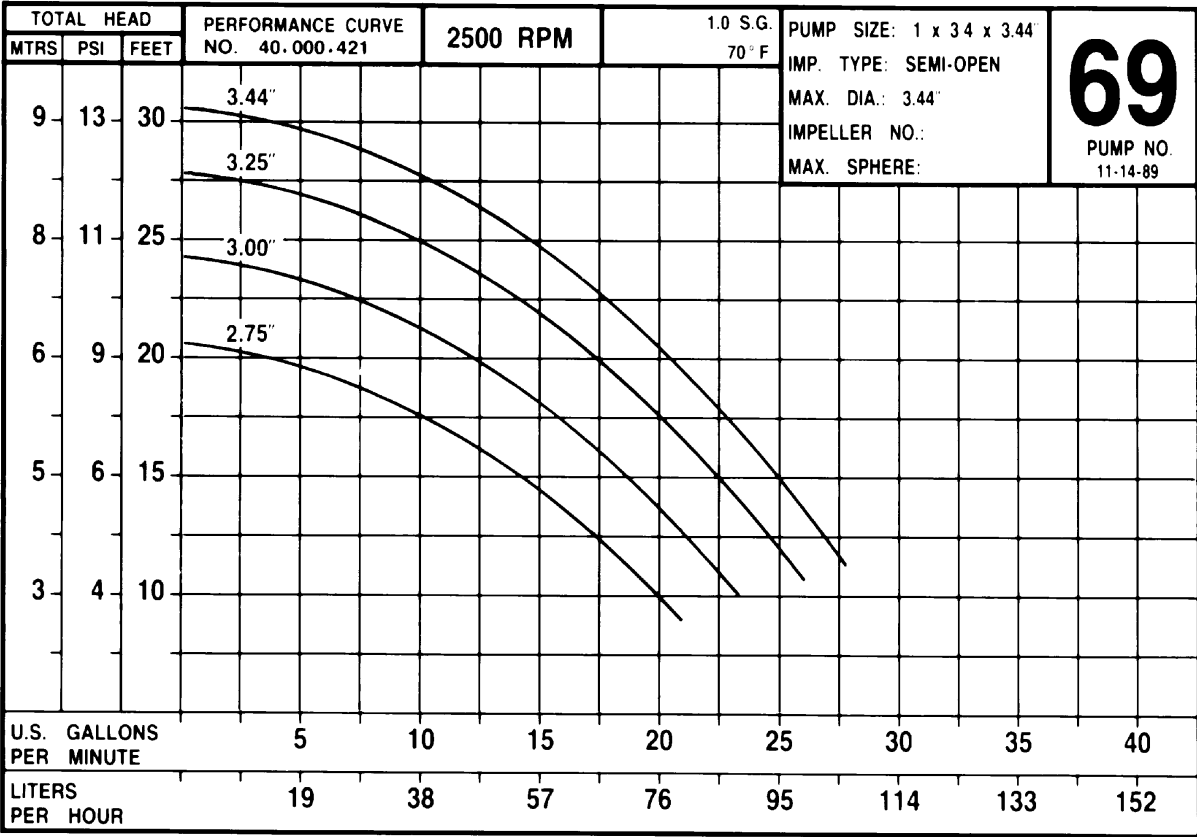
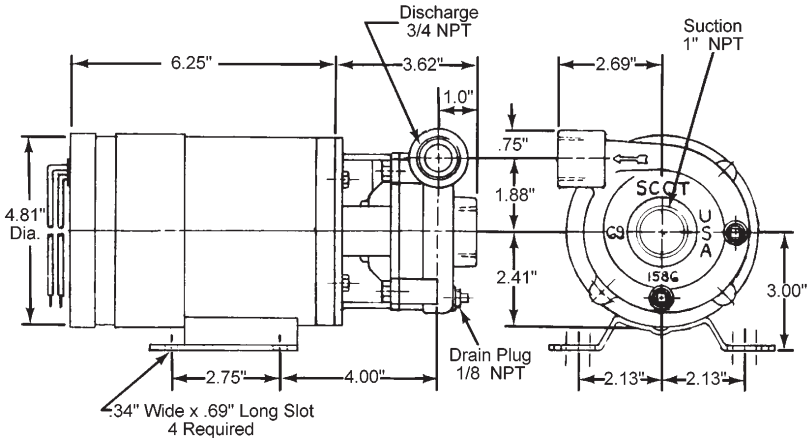
20 Amps Maximum at 13.5 volts.

**PUMP**

- Cast iron construction with semi-open bronze impeller
- 1" NPT suction, 3/4" NPT discharge
- Mechanical seal - epdm - Ceramic, Carbon - Stainless Steel
- Precision machined pump parts. Closely held tolerances. Computerized dynamic balancing of impeller ensures long seal and bearing life.
- Models for vertical mounting are available with seal vent line installed to prevent airlock at seal. Specify when ordering.

**MOTOR**

- Industrial heavy duty design
- Double sealed bearings
- High efficiency permanent magnet DC motor
- 416 stainless steel shaft
- Four oversized carbon brushes and 2500 RPM design affords extended brush life
- Removable brush inspection band. Easy brush maintenance without removing pump from vehicle.
- Totally enclosed non-ventilated (TENV)
- Class F insulation for high temperature location.
- Volts 13.5 (12) or 27 (24) available

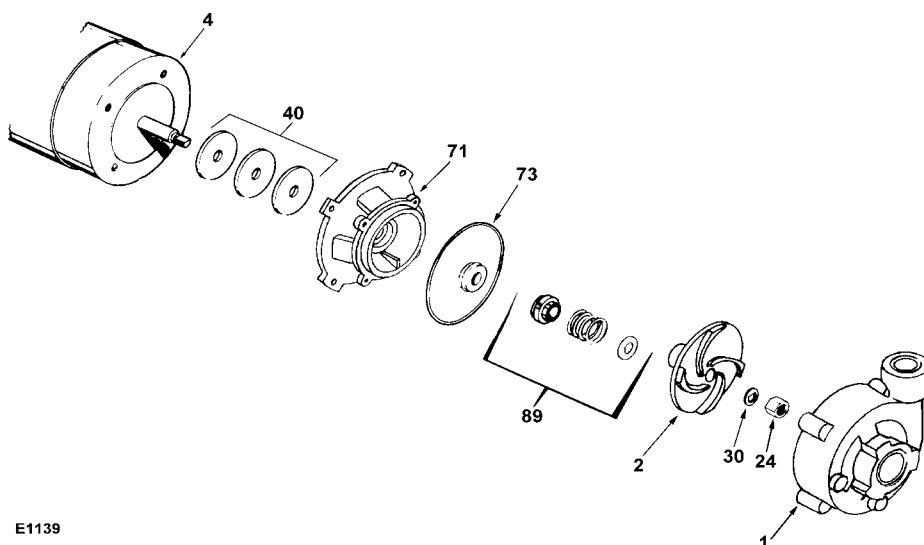


069025DC D1324  
0692500

69  
J42  
69 DC

069JDC  
81.001.323 G8

# **Pump 69 DC • Iron • J42 Frame • 2500 RPM**



E1139

KEY NO.	PART NAME	69 DC
1	CASE, IRON, 1 x .75 NPT	130.000.283AX
2	IMPELLER, 7/16" THREADED, SEMI-OPEN: BRONZE, 3.00"	131.000.680B
4	MOTOR: J42, RIGID BASE	See Chart
24*	, STAINLESS	105.000.174
30*	D WASHER, STAINLESS	104.000.168
40*	FLINGER, NEOPRENE (3 REQ'D)	104.000.171
71	ADAPTER, IRON	132.000.389
73*	GASKET, CASE	116.000.153
89*	5/8" SEAL TYPE 21, EPDM-CARB/CM	101.000.327
--	REPAIR KIT	118.000.558
* DENOTES COMPONENTS INCLUDED IN REPAIR KIT.		