

Roper Pumps



Series

With its magnetic power and leak-proof performance, the V Series will protect your operation.

## Safety Plus

### Applications

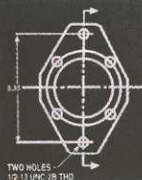
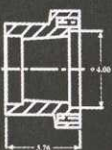
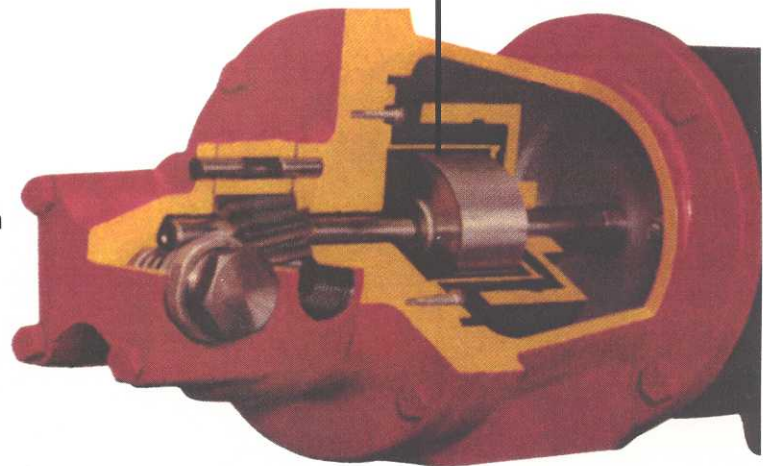
- Designed for ultra-safe transfer of hazardous or toxic liquids
- Ideal for environmental concerns or where "zero leakage" is an issue
- Excellent for the chemical and petroleum markets

### Features

- Magnetic drive, seal-less helical gear pump
- Neodymium magnets up to 5ft/lb torque
- Stainless steel containment shell
- Ductile iron housing with hardened steel shafts and gears
- Capable of running at nominal 1800 rpm motor speeds
- Up to 5.7 gpm
- Through port



The leading force behind liquids.®





**Roper Pump Company**  
 P.O. Box 269 • Commerce, GA 30529  
 Toll Free: 1-800-876-9160 • Fax: 706-335-5490  
 sales@roperpumps.com

**Visit Us On The WorldWide Web**  
[www.roperpumps.com](http://www.roperpumps.com)

## V Series

Model	Theoretical Capacity	Maximum Speed	Maximum Flow at Maximum Speed (0 Discharge Pressure)	Maximum Pressure	Port Connection
V05	.0005GPR(1.9 CC/REV)	1800 RPM	.9GPM (.204 M <sup>3</sup> /HR)	150 PSI (10 Bar)	1/2"NPT"
V10	.001GPR(3.8 CC/REV)	1800 RPM	1.8GPM (.410 M <sup>3</sup> /HR)	150 PSI (10 Bar)	1/2"NPT"
V20	.002GPR(7.8 CC/REV)	1800 RPM	3.6GPM (.820 M <sup>3</sup> /HR)	150 PSI (10 Bar)	1/2"NPT"
V30	.003GPR(11.4 CC/REV)	1800 RPM	5.4GPM (1.23 M <sup>3</sup> /HR)	150 PSI (10 Bar)	3/4"NPT"

## Materials of Construction

Housing	Gears/Shafts	Bearings	Containment Shell	O'Rings	Magnets
• Ductile Iron	• Hardened Steel	• Carbon	• 300 Stainless Steel	• Buna	• Neodymium

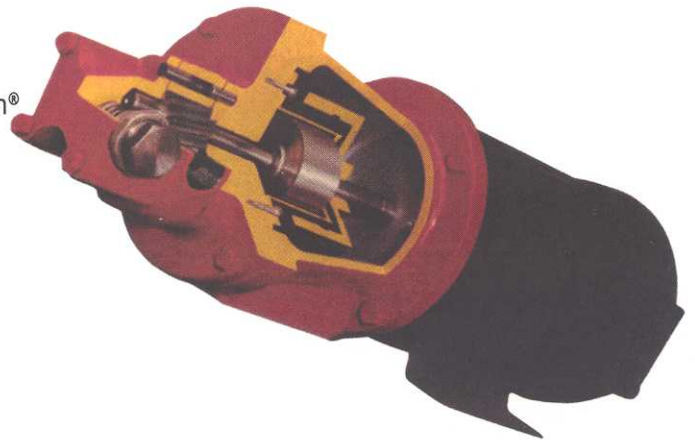
## Key Features

### Characteristics

- Helical gears for quiet operation
- Bi-directional rotation
- Designed for Close-Coupled or Foot-Mounted construction
- Sealless design
- Self priming

### Options

- Viton® or Teflon® O'Ring seals
- Relief valve
- Bronze or Iron bearings



Viton® and Teflon® are registered trademarks of E.I. duPont de Nemours Co. (Inc.)

