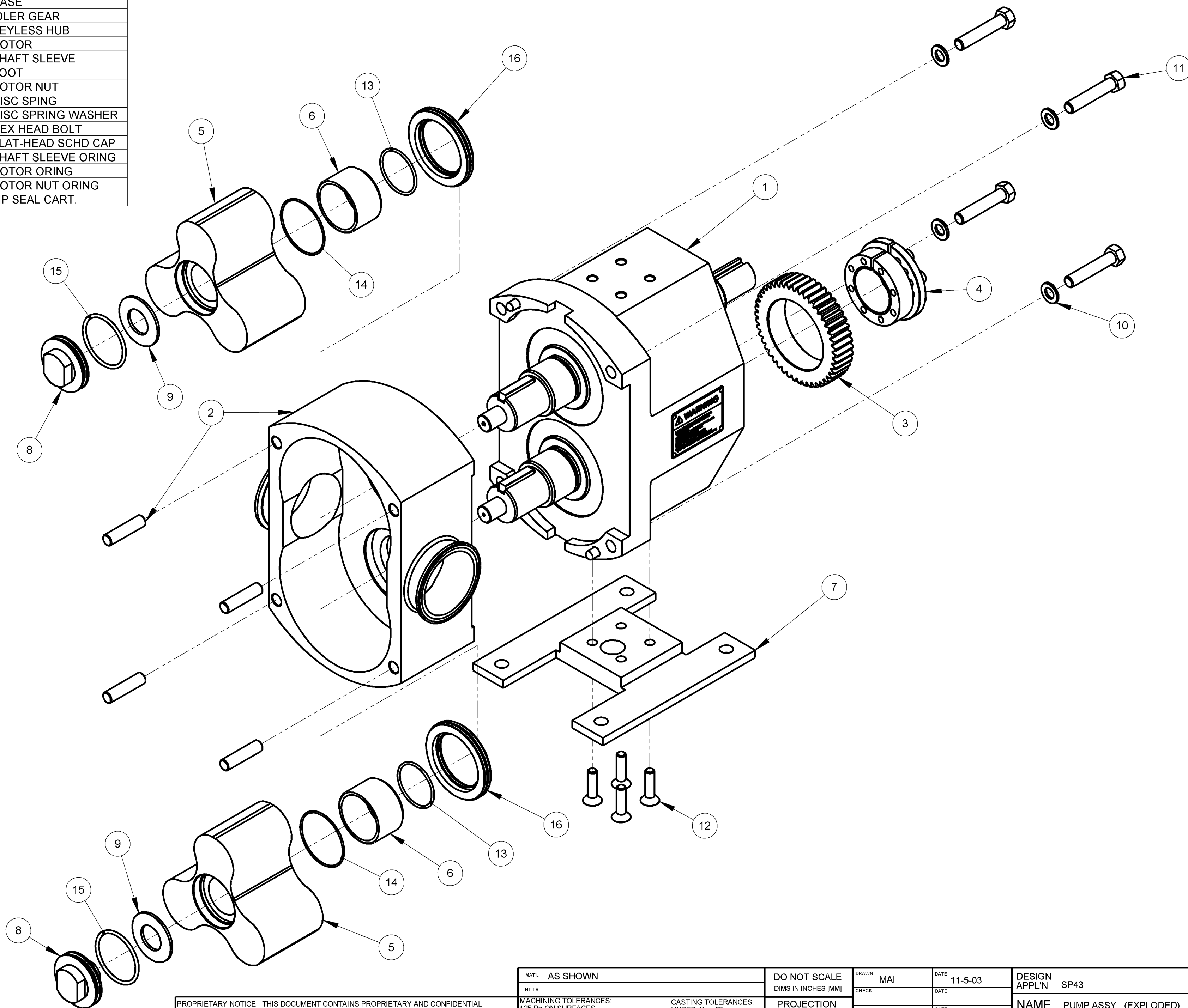


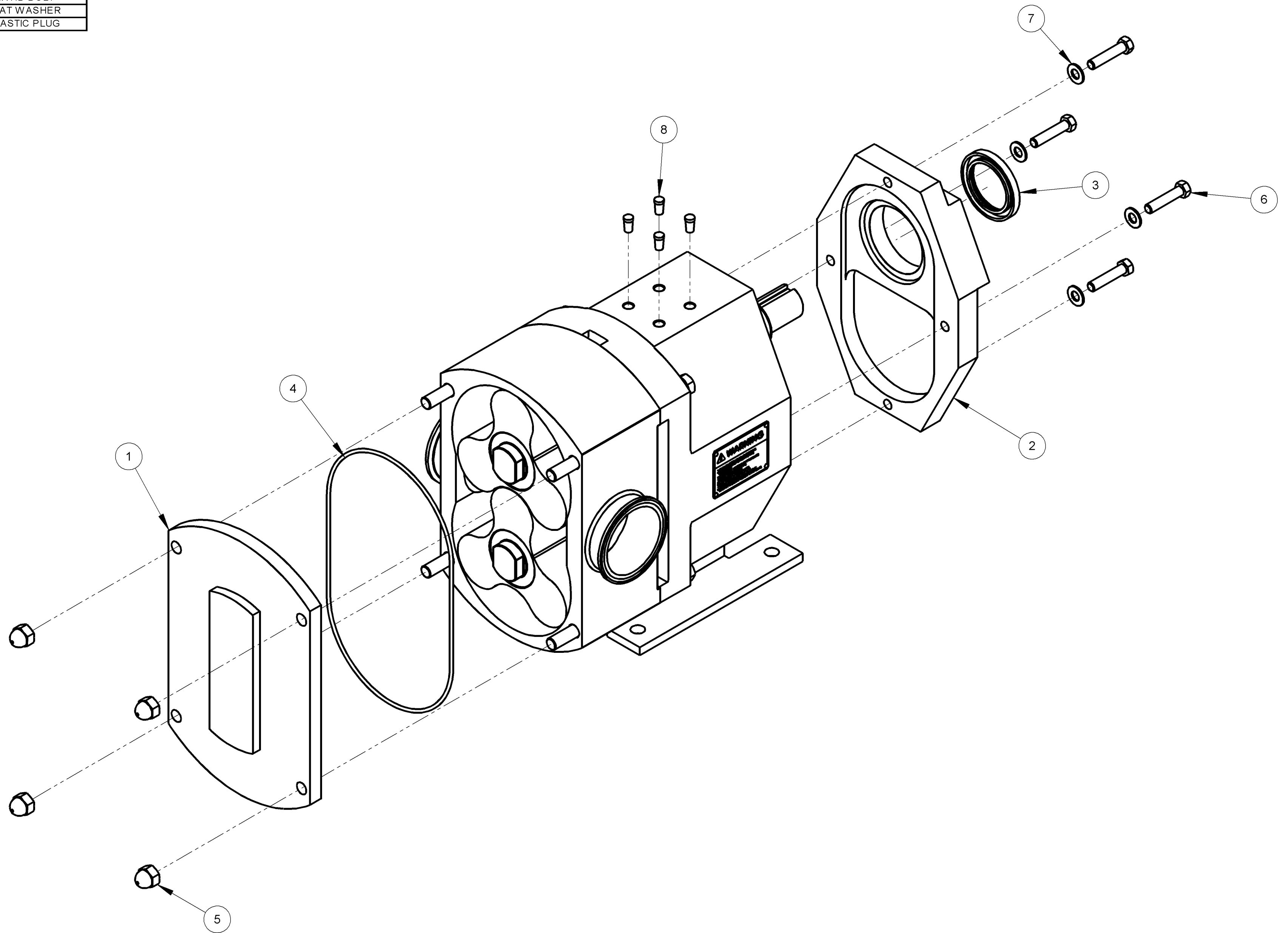
ITEM NO.	QTY.	PART NO.	DESCRIPTION
1	1	N8-201	GEAR BOX ASSY
2	1	N22-237	CASE
3	1	D37-168	IDLER GEAR
4	1	G33-42	KEYLESS HUB
5	2	D6-1249-47	ROTOR
6	2	D46-134-47	SHAFT SLEEVE
7	1	D33-838	FOOT
8	2	G62-171-47	ROTOR NUT
9	2	G8-454	DISC SPING
10	4	G8-457	DISC SPRING WASHER
11	4	G75-050250	HEX HEAD BOLT
12	4	G62-175	FLAT-HEAD SCHD CAP
13	2	G68-13	SHAFT SLEEVE ORING
14	2	G83-14	ROTOR ORING
15	2	G83-15	ROTOR NUT ORING
16	2	G17-208	LIP SEAL CART.



PROPRIETARY NOTICE: THIS DOCUMENT CONTAINS PROPRIETARY AND CONFIDENTIAL INFORMATION WHICH IS THE EXCLUSIVE PROPERTY OF ROPER PUMP COMPANY, COMMERCE, GEORGIA AND SHALL NOT BE COMMUNICATED, DISCLOSED, OR REPRODUCED WITHOUT WRITTEN CONSENT OF MANAGEMENT AND SHALL NOT BE DISCLOSED IN ANY MANNER TO OUTSIDE PARTIES WITHOUT PRIOR WRITTEN CONSENT OF MANAGEMENT.

MAT'L AS SHOWN	DO NOT SCALE DIMS IN INCHES [MM]	DRAWN MAI	DATE 11-5-03	DESIGN APPL'N SP43	SPEC TYPE 1
HT TR		CHECK	DATE	NAME PUMP ASSY. (EXPLODED)	
MACHINING TOLERANCES: 125 Ra ON SURFACES UNDER 12" ±.010, OVER 12" ±.020 BREAK EDGES .015 MAX (45° OR RAD) ANGLES ± 1°	CASTING TOLERANCES: UNDER 4" ±.03 OVER 4" ±.06 REMOVE SAND, FIN, AND BURRS	PROJECTION	APPD	DATE	NO. SP043NCLEM
			RELEASE	DATE	SHEET 1 OF 1
					REVISION -

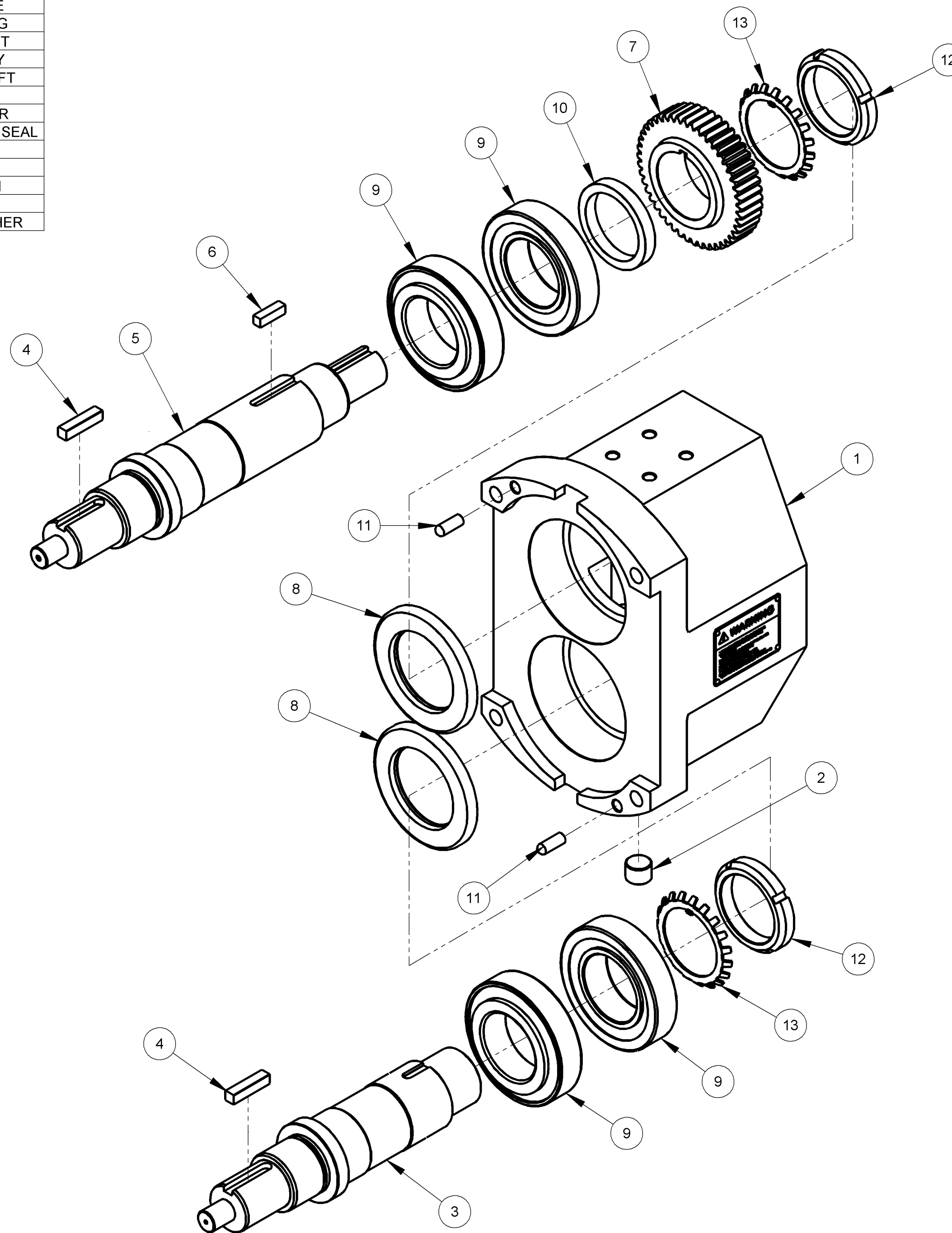
ITEM NO.	QTY.	PART NO.	DESCRIPTION
1	1	P3-865-47	FACEPLATE
2	1	AP2-1695-42	BACKPLATE
3	1	G17-214	LIP SEAL
4	1	G83-18	O-RING
5	4	G43-102	ACORN NUT
6	4	G75-037175	HEX HD BOLT
7	4	G8-392	FLAT WASHER
8	4	G56-85	PLASTIC PLUG



PROPRIETARY NOTICE: THIS DOCUMENT CONTAINS PROPRIETARY AND CONFIDENTIAL INFORMATION WHICH IS THE EXCLUSIVE PROPERTY OF ROPER PUMP COMPANY, COMMERCE, GEORGIA AND SHALL NOT BE COMMUNICATED, DISCLOSED, OR REPRODUCED WITHOUT WRITTEN CONSENT OF MANAGEMENT AND SHALL NOT BE DISCLOSED IN ANY MANNER TO OUTSIDE PARTIES WITHOUT PRIOR WRITTEN CONSENT OF MANAGEMENT.

MAT'L AS SHOWN	DO NOT SCALE DIMS IN INCHES [MM]	DRAWN MAI	DATE 11-5-03	DESIGN APPL'N SP43	SPEC TYPE 1
HT TR		CHECK	DATE	NAME PUMP ASSY. (EXPLODED)	
MACHINING TOLERANCES: 125 Ra ON SURFACES UNDER 12" ±.010, OVER 12" ±.020 BREAK EDGES .015 MAX (45° OR RAD) ANGLES ± 1°	CASTING TOLERANCES: UNDER 4" ±.03 OVER 4" ±.06 REMOVE SAND, FINIS, AND BURRS	PROJECTION	APP'D	DATE	NO. SP043NCLEM
			RELEASE	DATE	SHEET 1 OF 1
					REVISION -

ITEM NO.	QTY.	PART NO.	DESCRIPTION
1	1	N22-231	GEAR CASE
2	1	G56-83	DRAIN PLUG
3	1	D1-2674	IDLER SHAFT
4	2	D30-227	ROTOR KEY
5	1	D1-2737	DRIVESHAFT
6	1	D30-230	KEY
7	1	D37-169	DRIVE GEAR
8	2	G17-213	FRONT OIL SEAL
9	4	G40-347	BEARING
10	1	D12-152	SPACER
11	2	G48-297	DOWEL PIN
12	2	G33-27	LOCKNUT
13	2	G33-28	LOCKWASHER



PROPRIETARY NOTICE: THIS DOCUMENT CONTAINS PROPRIETARY AND CONFIDENTIAL INFORMATION WHICH IS THE EXCLUSIVE PROPERTY OF ROPER PUMP COMPANY, COMMERCE, GEORGIA AND SHALL NOT BE COMMUNICATED, DISCLOSED, OR REPRODUCED WITHOUT WRITTEN CONSENT OF MANAGEMENT AND SHALL NOT BE DISCLOSED IN ANY MANNER TO OUTSIDE PARTIES WITHOUT PRIOR WRITTEN CONSENT OF MANAGEMENT.

MATL	AS SHOWN
HT TR	
MACHINING TOLERANCES:	CASTING TOLERANCES:
125 Ra ON SURFACES	UNDER 4" ±.03
UNDER 12" ±.010, OVER 12" ±.020	OVER 4" ±.06
BREAK EDGES .015 MAX	REMOVE SAND, FINES,
(45° OR RAD)	AND BURRS
ANGLES ± 1°	

DO NOT SCALE
DIMS IN INCHES [MM]
PROJECTION

DRAWN	MAI	DATE	11-5-03
CHECK		DATE	
APP'D		DATE	
RELEASE		DATE	

DESIGN APPL'N	SP43	SPEC	TYPE	1	
NAME	GEARBOX ASSY. (EXPLODED)				
NO.	N8-201-EXPD	SHEET	1 OF 1	REVISION	-