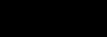
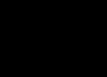
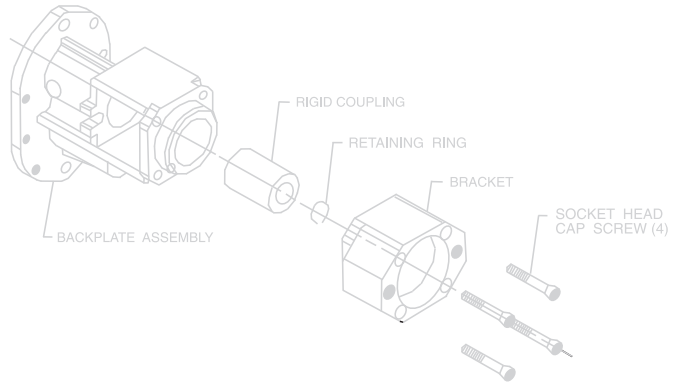
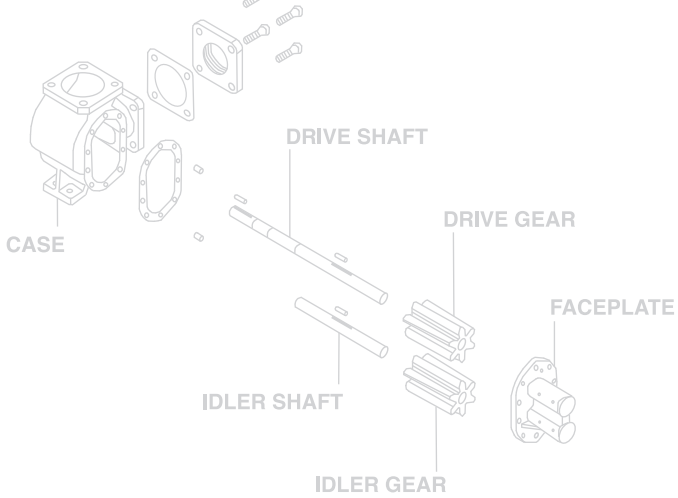
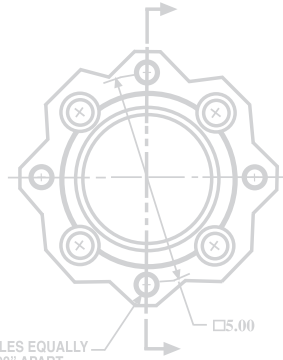
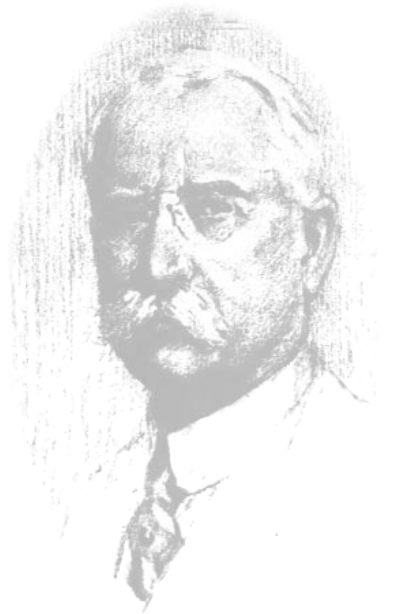




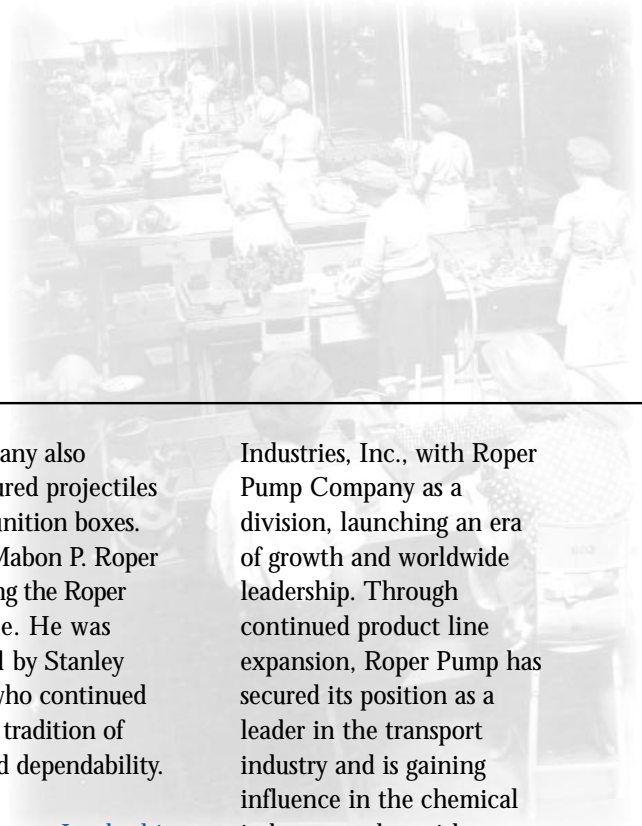
The leading force behind liquids.





[Our Origin](#)





### The Unstoppable Ropers

The early history of the Roper Company is a triumph of true American grit over adversity.

George D. Roper, challenged from childhood by the loss of his left arm in a train accident, founded the Roper business legacy in 1857 when he bought a half interest in the Van Wie Gas Stove Company in Springfield, Illinois. He became sole owner in 1894 and moved the company to Rockford. Ten days later, it was totally destroyed by fire. Salvaged and rebuilt as the Eclipse Gas Stove Company, the business grew steadily, expanding to include the

American Foundry Company in 1901 and the Trahern Pump Company in 1906. Trahern's quality hand operated water well pumps had been helping to build the American dream since 1857.

In 1925, Mabon P. Roper inherited the company from his father and built it into the first and leading manufacturer of pumps for the booming petroleum industry. The company survived the Depression and during WW II contributed its expertise to the defense of the country by developing specialized diesel engine lubricating pumps for war plants and naval vessels.

The company also manufactured projectiles and ammunition boxes. In 1942, Mabon P. Roper died, ending the Roper family line. He was succeeded by Stanley Hobson, who continued the Roper tradition of quality and dependability.

### From Legacy to Leadership

In the two decades that followed, the Roper Pump Company grew and evolved, selling the original Stove Company in 1957 and acquiring O.E. Szekely & Co., pump specialists, in Commerce, Georgia in 1959. In 1961, the company name was changed to Roper

Industries, Inc., with Roper Pump Company as a division, launching an era of growth and worldwide leadership. Through continued product line expansion, Roper Pump has secured its position as a leader in the transport industry and is gaining influence in the chemical industry market with unique and reliable stainless steel products.

Today, Roper Pump Company offers its customers innovation, state-of-the-art technology, quality and value, combined with a tradition of reliability that dates back more than 140 years.



Roper  
**F**  
 Series

Roper's "F" Series gives you eight great ways to deliver under pressure.



# Power Under Pressure

## Applications

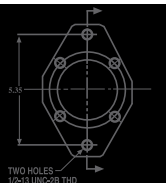
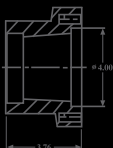
- Hydraulic power for positioning devices, lifts, machine actuation, fuel burners and blenders
- General transfer applications for oil and petroleum fluids

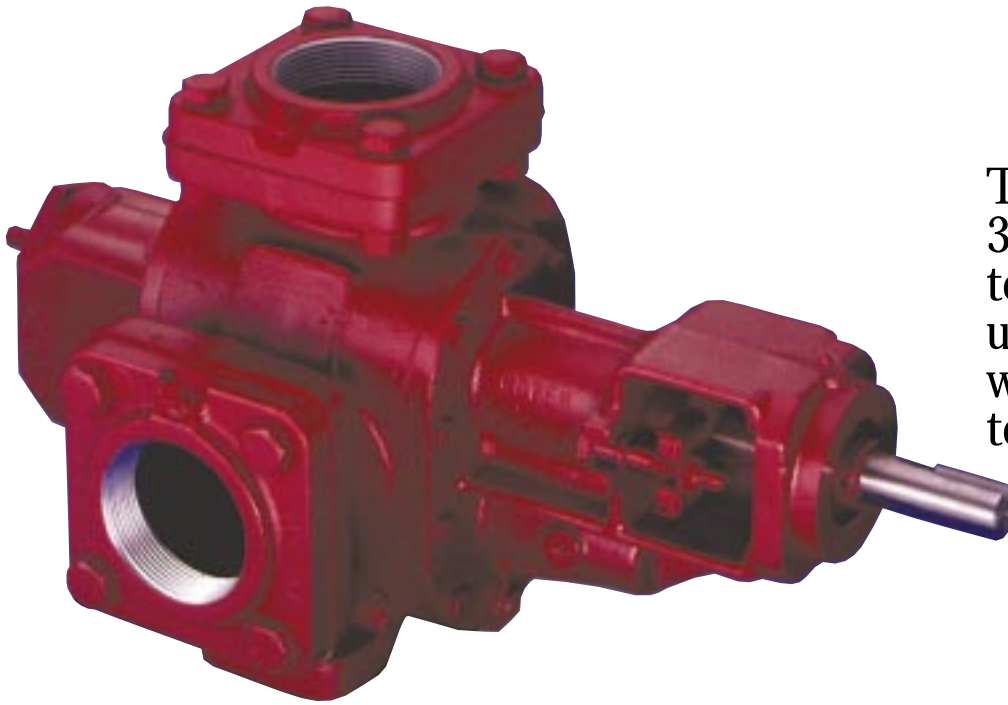
## Features

- High pressure external gear pump
- Capable of handling pressures to 300psi in standard construction
- 500psi with bearing modifications
- Front pullout design, maintenance without disturbing piping
- Flanged sleeve bushings with grooves to allow for lubrication

## Options

- Four-port design allows 8 optional piping arrangements to reduce installation time and cost
- Integral relief valve





There must be 3600 easy ways to put these ultra-reliable workhorses to use.

# Trouble-Free Versatility

## Applications

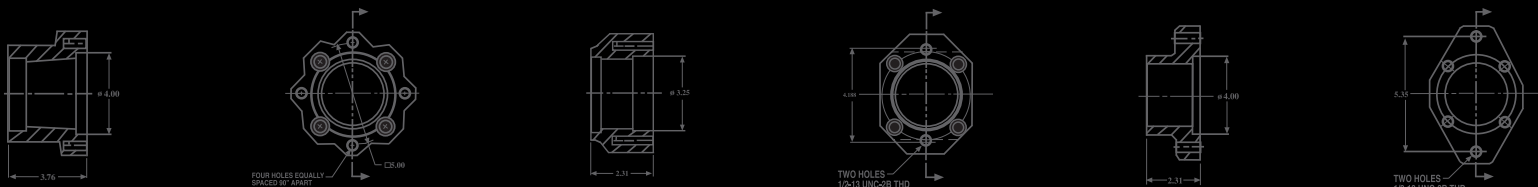
- Mixing, blending, recirculating and transferring heavy, viscous material in either a fixed or mobile transfer application
- Ideal for gasoline, asphalt, molasses, ink, roofing compound and oils

## Features

- Heavy duty cast iron helical gear pumps
- Bi-directional, self-priming
- Differential pressures to 125 psi
- Up to 340 gpm
- Standard operation up to 212 F.
- Can be built to operate up to 500 F.
- Maintenance-free durability

## Options

- Through ports or angled ports; 2-sided or top and side configuration
- Threaded ports or flanged, tapped port connections
- Integral relief valve and integral gear reducer
- Outboard bearing, depending on drive and seal arrangements



Roper  
**ROC<sup>®</sup>**  
 Series

Roper's ROC<sup>®</sup>  
 goes with the  
 flow and performs  
 spotlessly in  
 stainless steel



# ROC<sup>®</sup> Solid Service

## Applications

- Chemical processing
- Pharmaceutical industries
- Injection and transfer applications of acids and solvents
- Trademarked design

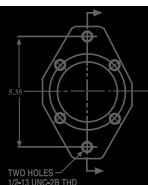
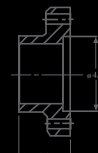
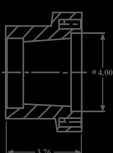
## Features

- Heavy duty stainless steel gear pumps for optimum chemical capability
- Back pull-out design for easy maintenance without disturbing piping
- One-piece "D" style bushings eliminate the need for wearplates and provide positive alignment and gear support
- Capable of operating at nominal motor speeds

- Good for up to 300psi differential pressures
- No integral relief valve available, external relief recommended

## Options

- Various drive arrangements available. Close-coupled bracket and magnetic drive arrangements available for the small series.





A reliable performer, Roper's Z Series is open to easy maintenance and wide choice of seals.

# Reliable and Versatile

## Applications

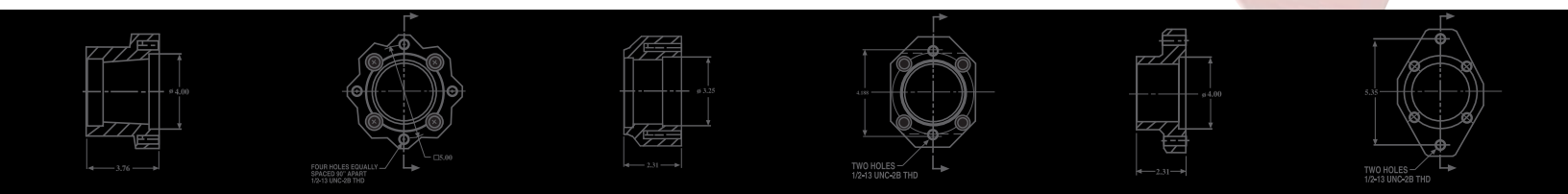
- Excellent for mixing, transferring, blending and recirculating a variety of fluids
- Ideal for the chemical and petroleum markets

## Features

- Cast iron helical gear pump
- Two-piece backplate for flexible sealing options
- Many parts interchangeable with 3600 series
- Differential pressures to 125 psi
- Up to 165 gpm

## Options

- ANSI flanges
- Single, double and cartridge sealing options
- Integral relief valve and integral gear reducer
- Outboard bearing, depending on drive and seal arrangements

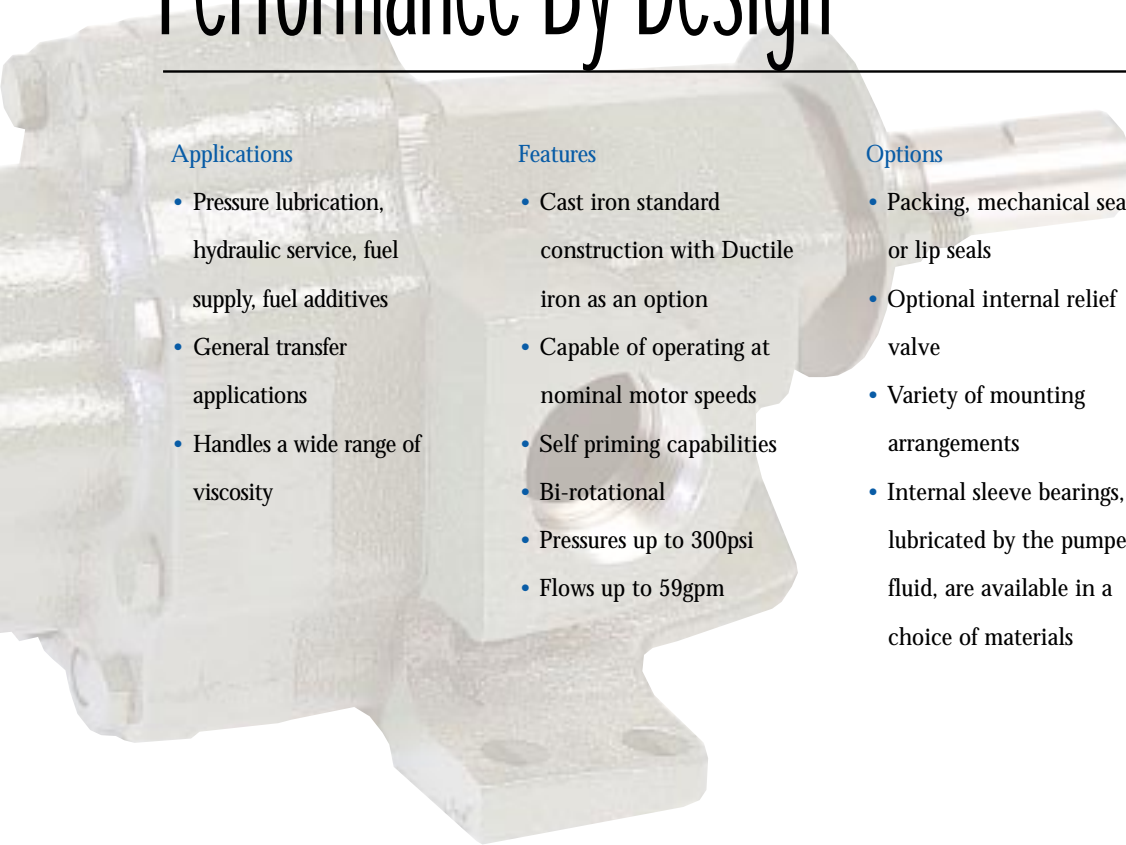


Roper  
A  
Series

Geared for top performance, Roper's "A" Series keep your operation moving through thick and thin.



# Performance By Design



### Applications

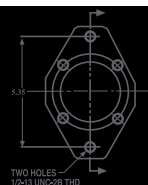
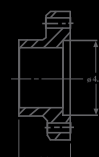
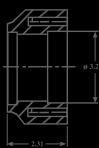
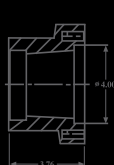
- Pressure lubrication, hydraulic service, fuel supply, fuel additives
- General transfer applications
- Handles a wide range of viscosity

### Features

- Cast iron standard construction with Ductile iron as an option
- Capable of operating at nominal motor speeds
- Self priming capabilities
- Bi-rotational
- Pressures up to 300psi
- Flows up to 59gpm

### Options

- Packing, mechanical seal, or lip seals
- Optional internal relief valve
- Variety of mounting arrangements
- Internal sleeve bearings, lubricated by the pumped fluid, are available in a choice of materials







With its magnetic power and leak-proof performance, Roper's V Series will protect your operation.

# Safety Plus

## Applications

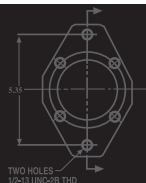
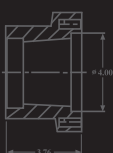
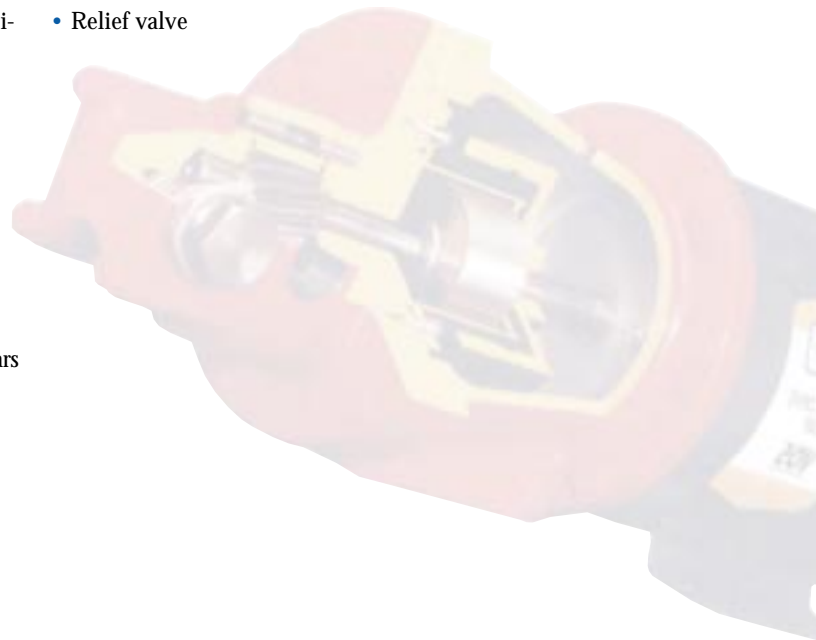
- Designed for ultra-safe transfer of hazardous or toxic liquids
- Ideal for environmental concerns or where "zero leakage" is an issue
- Excellent for the chemical and petroleum markets

## Features

- Magnetic drive, seal-less helical gear pump
- Neodymium magnets up to 5ft/lb torque
- Stainless steel containment shell
- Ductile iron housing with hardened steel shafts and gears
- Capable of running at nominal 1800rpm motor speeds
- Up to 5.7gpm
- Through port

## Options

- Relief valve





Fitting Your Needs





### The Prime Choice Worldwide

Roper Pump Company has gained worldwide leadership through the use of innovative pump technology for the Power Generation market. Our specialized Flow Dividers and Fuel System Pumps set the standard in Power Generation. Also a leader in the Downhole Process market, Roper's unique rotor and stator design combinations meet a wide range of drilling applications from oil drilling to gold mining.

### Innovative & Improvement

One of Roper Pump's strengths has always been our innovative and rapid response to emerging market demands. We

work with our customers to provide the most effective, high quality solutions. For example, our Roper 3600 Pumps, known in the industry as "The Truck Pumps", offer a wide range of options as a result of constant adaptation and customization to meet changing customer needs.

### Experience & Expertise

The scope of Roper Pump's experience and expertise covers a wide range of industry requirements, from the CPI to the food and transfer markets.

Our capability to develop and design products for specialized markets has advanced with

each new challenge. We pride ourselves on being an organization that's small enough to customize products to meet specific needs, and large enough to produce them cost effectively. Roper Pump combines broad engineering expertise, state of the art design capabilities and exceptional production and manufacturing experience with the versatility and flexibility to maintain rigorous quality standards within fast turnaround schedules.

### Service & Support

Roper Pump's commitment to offering the best in fuel system aftermarket support spans the

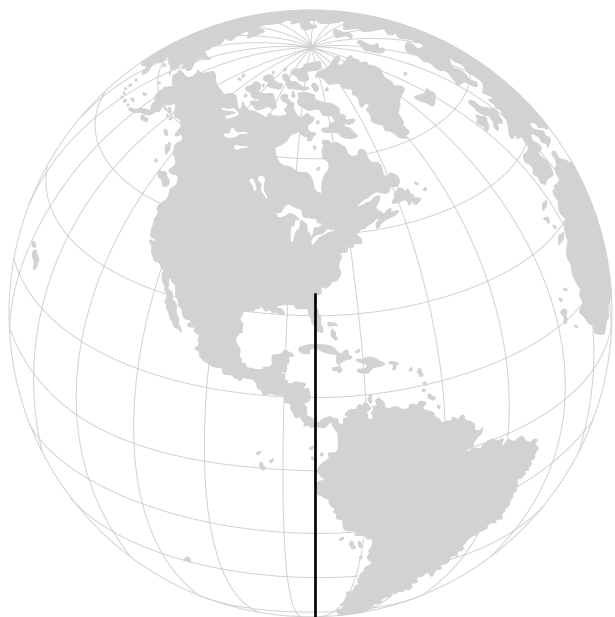
globe. Our team of experienced engineers provides design solutions tailored to specific operating fuel conditions.

Our services include:

- engineered upgrades
- failure analysis
- fuel and metallurgical evaluation
- on-site service
- repairs and performance testing

This philosophy of extensive customer service and complete satisfaction extends to all our products. Roper's vision of the future is continuing leadership and growth based on the support and satisfaction of our customers in all the markets we serve.





The leading force behind liquids.

Local Distribution, Global Impact



Roper Pump Company  
P.O. Box 269  
Commerce, GA 30529  
Toll Free: 1-800-876-9160  
Fax: 706-335-5490  
e:mail: sales@roperpumps.com

All information and recommendations appearing in this bulletin concerning the use of products described herein are based on tests believed to be reliable. However, it is the user's responsibility to determine the suitability for his own use of such products. Since the actual use by others is beyond our control, no guarantee, expressed or implied, is made by Roper Pump Company as to the effects of such use or results to be obtained. Roper Pump Company assumes no liability arising out of the use by others of such products. Nor is the information herein to be construed as absolutely complete, since additional information may be necessary or desirable when particular or exceptional conditions or circumstances exist or because of applicable laws or government regulations.

Roper and Roper Pumps is a registered trademark. ROC is a registered trademark of the Roper Pump Company.



Call Us For Information  
Visit Us On The WorldWide Web  
[www.roperpumps.com](http://www.roperpumps.com)

