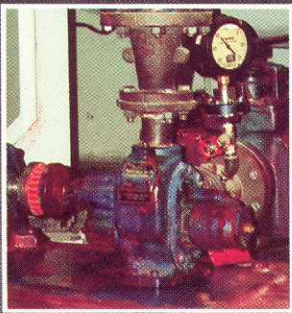
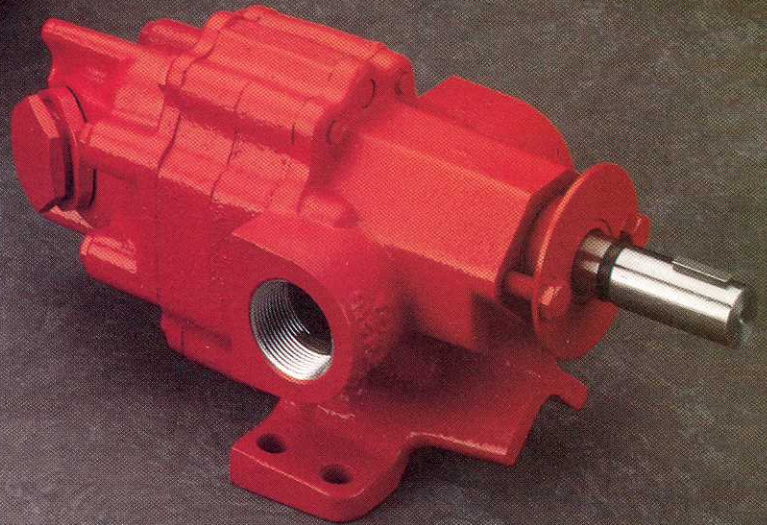
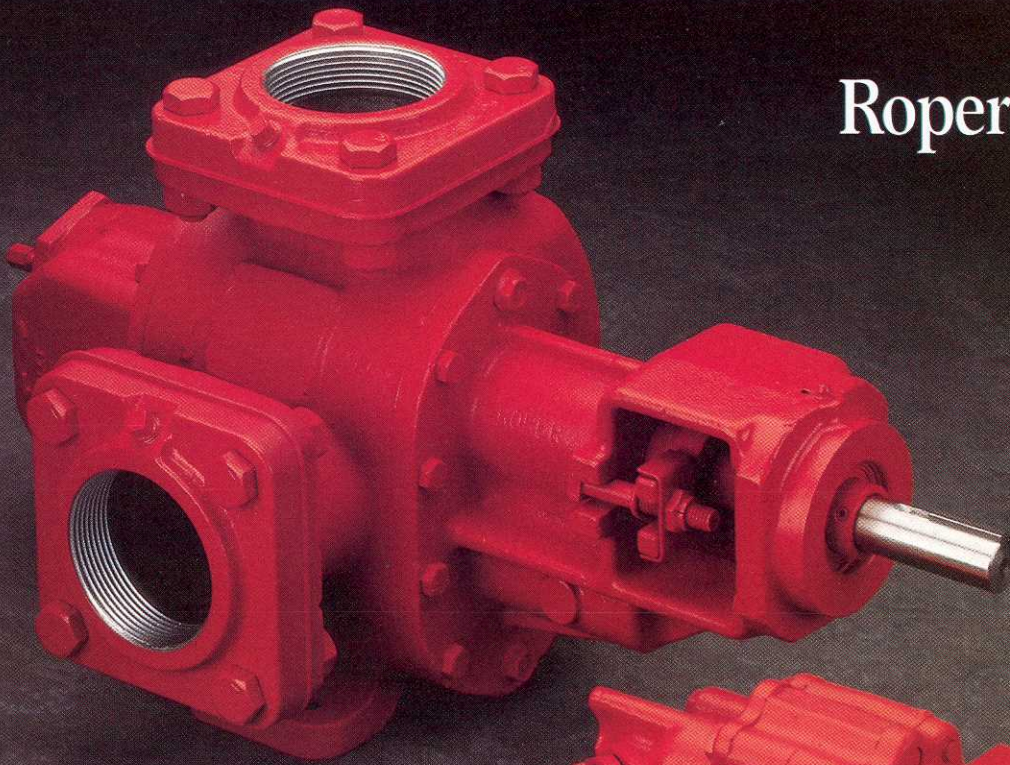


Roper Ink Pumps



Roper's quiet, smooth-running ink pumps are specially designed to suit the unique needs of the ink market. Depending on viscosities, the A series pump may operate up to standard motor speeds. The 3600 series may operate up to 700 RPM.

Each Roper ink pump is manufactured to close tolerances, then tested to ensure dependable performance. These self-priming pumps are factory assembled for clockwise rotation, but may be reassembled for equally efficient operation

in a counter-clockwise rotation.

The Roper ink pump is equipped with PTFE packing and iron bearings. The internal bearings are lubricated by the fluid being pumped. The PTFE packing, in combination with low discharge pressure and slow speed greatly reduces the tendency for the ink pigment to dry out.

To find out more about the Roper ink pump, contact Roper Pump company or your local distributor.

Advantages

- PTFE packing and iron bearings.
- Available relief valve helps to protect pump from excessive outlet pressure.
- Mechanical seal is available upon request. Consult the factory.

3600 Series

- Foot mounting.
- Capacities to 340 GPM; pressures to 100 psi.
- Jacketed pumps available.
- Integral gear reduction.

A Series

- Flange mounting.
- Capacities to 56 GPM; pressures to 100 psi.



Performance Chart Series A

SIZE	PSI	SSU	3600 RPM				1800 RPM				1200 RPM				900 RPM				720 RPM				
			30	100	1000	5000	30	100	1000	5000	30	100	1000	10,000	30	100	1000	10,000	30	100	1000	10,000	
005	50	GPM	1.62	1.78	1.83	1.83	.70	.87	.91	.91	.39	.56	.61	.61	.24	.41	.45	.45	.15	.32	.36	.36	.36
		HP	.41	.32	.53	.84	.17	.14	.21	.34	.06	.06	.13	.21	.05	.05	.09	.15	.04	.04	.06	.12	
		GPM	1.30	1.71	1.83	1.83	.38	.79	.91	.91		.48	.61	.61		.33	.45	.45		.24	.36	.36	.36
03	50	HP	.80	.47	.64	.95	.33	.21	.26	.39		.10	.15	.24		.08	.11	.18		.06	.09	.14	.14
		GPM	10.42	11.5	11.41	11.49	4.66	5.29	5.65	5.73	2.74	3.37	3.73	3.82	1.78	2.41	2.77	2.86	1.20	1.83	2.19	2.28	2.28
		HP	.70	.68	.94	1.29	.34	.33	.45	.62	.20	.20	.29	.46	.15	.15	.21	.34	.12	.12	.17	.27	.27
03	100	GPM	9.3	10.0	11.32	11.45	3.66	4.83	5.56	5.69		2.91	3.64	3.80		1.95	2.68	2.84		1.37	2.10	2.26	2.26
		HP	1.6	1.6	1.61	1.96	.85	.68	.77	.94		.41	.50	.67		.31	.37	.50		.25	.30	.40	.40
		GPM																					

SIZE	PSI	SSU	1800 RPM				1200 RPM				900 RPM				720 RPM							
			30	100	1000	5000	30	100	1000	5000	30	100	1000	10,000	30	100	1000	10,000				
06	50	GPM	10.6	10.9	11.2	11.2	6.8	7.1	7.4	7.5	4.9	5.2	5.5	5.6	3.8	4.1	4.4	4.4	5.0	4.4	4.5	4.5
		HP	.88	.88	1.33	2.08	.48	.48	.7	1.04	.34	.34	.49	.71	.25	.25	.35	.48	.25	.25	.48	.57
		GPM	9.8	10.40	11.0	11.1	6.0	6.7	7.2	7.4	4.1	4.8	5.3	5.5		3.6	4.2	4.4		3.6	4.4	4.4
16	50	HP	1.21	1.21	1.66	2.41	.7	.7	.92	1.26	.5	.5	.65	.87		.38	.48	.61		.38	.61	.7
		GPM	27.8	29.2	30.4	30.8	17.4	18.8	20.1	20.4	12.2	13.6	14.9	15.2	9.1	10.5	11.8	12.1		9.1	11.8	12.1
		HP	2.1	2.3	2.6	3.4	1.2	1.3	1.4	1.8	.8	.8	1.0	1.3	.6	.6	.7	1.0		.6	.7	1.0
32	50	GPM	25.7	28.0	30.0	30.6		17.6	19.6	20.2		12.4	14.4	15.0		9.3	11.3	11.9		9.3	11.9	12.1
		HP	3.0	3.2	3.5	4.3		1.9	2.0	2.4		1.3	1.4	1.8		1.0	1.1	1.3		1.0	1.3	1.5
		GPM	50.8	54.3	57.6	58.5	31.0	34.5	37.8	38.7		24.6	27.9	28.8	29.1	18.7	22.0	22.9		18.7	22.9	23.1
32	100	HP	3.9	3.9	4.1	5.7	2.3	2.3	2.5	3.4		1.7	1.8	2.5	2.9	1.3	1.4	1.9		1.3	1.9	2.2
		GPM	51.8	56.7	58.1		32.0	36.9	38.3		22.1	27.0	28.4	28.7		21.1	22.4	22.8		21.1	22.4	22.8
		HP	5.6	5.8	7.5		3.5	3.7	4.6		2.5	2.7	3.3	3.7		2.1	2.6	2.9		2.1	2.6	2.9

An outboard ball bearing is recommended for viscosities below 40 SSU on A06 through A40. Additional size available.

Performance Chart Series 3600

SIZE	PSI	SSU	300 RPM				400 RPM				500 RPM				600 RPM				700 RPM			
			30	100	1000	10,000	30	100	1000	10,000	30	100	1000	10,000	30	100	1000	10,000	30	100	1000	10,000
3611 4611	25	GPM	31	32	33	33	42	43	44		53	54	55		64	65	66		75	75	77	
		HP	.9	.9	1.1	1.7	1.2	1.2	1.6		1.6	1.6	2.4		2.1	2.1	2.9		2.5	2.5	3.5	
		GPM	29	31	33	33	40	42	44		51	53	55		62	64	65		73	75	77	
3617 4617	50	HP	1.3	1.3	1.5	2.1	1.9	1.9	2.3		2.4	2.4	3.2		2.9	2.9	3.7		3.5	3.5	4.5	
		GPM	29	32	33		41	43			51	54			63	65			74	76		
		HP	2.3	2.5	3.1		3.2	3.6			4.0	4.8			4.9	5.7			5.7	6.7		
3622 4622	25	GPM	46	49	50	51	63	66	67		80	83	84		95	100	101		115	117	118	
		HP	1.0	1.0	1.4	2.3	1.4	1.4	2.1		2.0	2.0	3.0		2.7	2.7	4.1		3.3	3.3	5.3	
		GPM	42	47	50	51	59	64	67		76	81	84		93	98	101		111	115	118	
3622 4622	50	HP	1.7	1.7	2.1	3.0	2.4	2.4	3.1		3.2	3.2	4.2		4.1	4.1	5.5		5.0	5.0	7.0	
		GPM	43	49	50		60	66			77	83			94	100			111	117		
		HP	3.1	3.5	4.4		4.3	5.0			5.6	6.6			7.0	8.4			8.4	10.4		
3622 4622	25	GPM	63	65	66	66	85	87	88		107	109	110		129	131	132		151	153	154	
		HP	1.4	1.4	1.8	2.6	2.4	2.4	3.2		3.0	3.0	4.1		3.5	3.5	4.8		4.5	4.5	6.4	
		GPM	61	63	65	66	83	85	87		105	107	109		127	129	131		149	151	153	
3622 4622	50	HP	2.4	2.4	2.8	3.6	3.7	3.7	4.5		4.5	4.5	5.6		5.4	5.4	6.7		6.6	6.6	8.5	
		GPM	61	65	66		83	86			105	108			127	130			149	152		
		HP	4.3	4.7	5.5		6.1	6.9			7.5	8.6			9.2	10.5			11.0	12.9		

Materials Chart Series A

	HOUSING	GEARS	BEARINGS	SHAFTS
STANDARD	Cast Iron	Hardened Steel	Bronze	Hardened Steel
AVAILABLE	Ductile Iron	—	Iron Carbon	—

*Additional sizes available

Materials Chart Series 3600

	HOUSING	GEARS	BEARINGS	SHAFTS
STANDARD	Cast Iron	Hardened Iron Alloy	Bronze	Steel
AVAILABLE	Ductile Iron*	Bronze or Stainless Steel*	Iron or Carbon	Stainless Steel

*Not available for all sizes



Roper Pump Company
 Commerce, Georgia 30529
 Dependable pumps since 1857.
 WATS 1-800-543-1709
 In GA. (404) 335-5551
 FAX (404) 335-5505