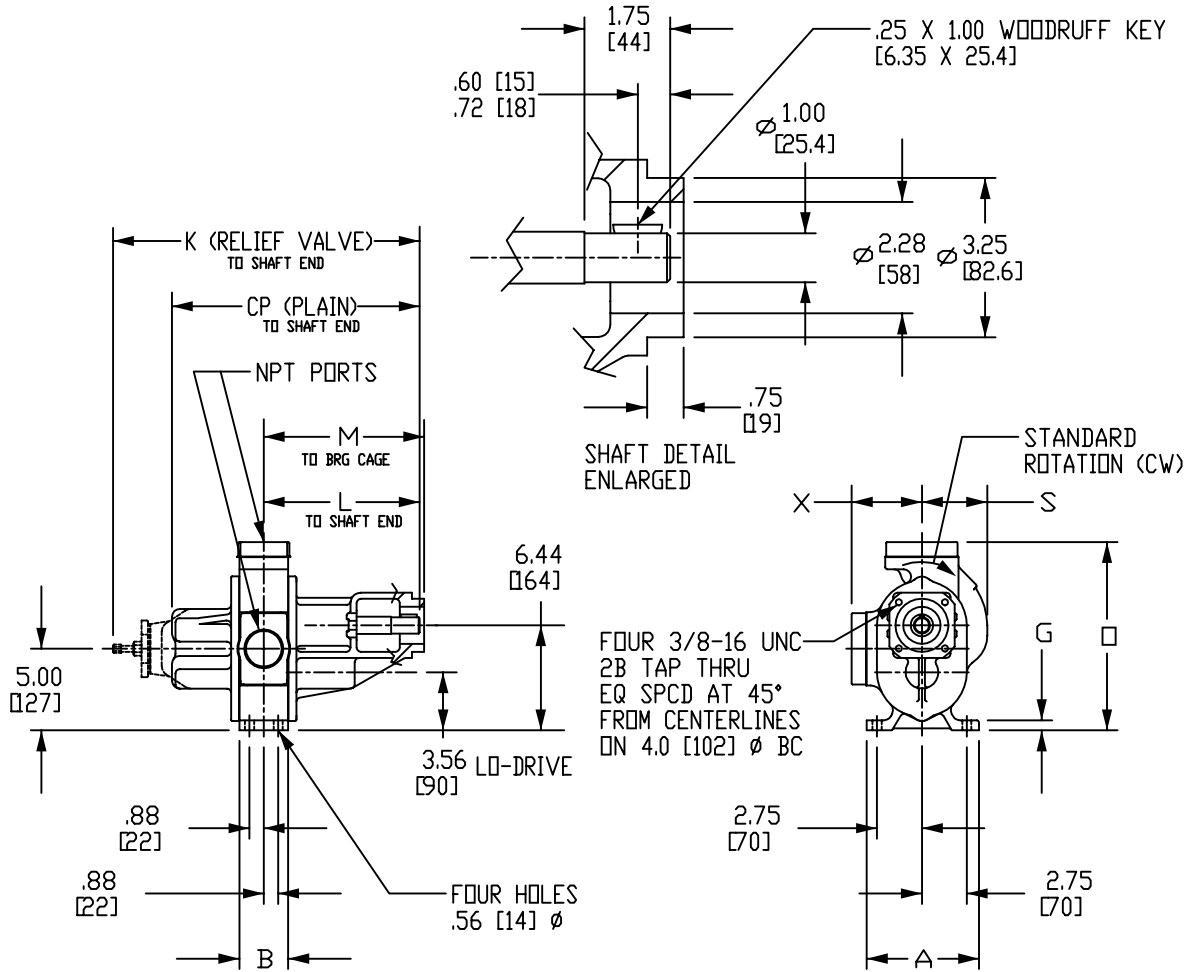
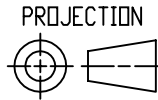


3611-3722 BH,F,RV TYPE 3

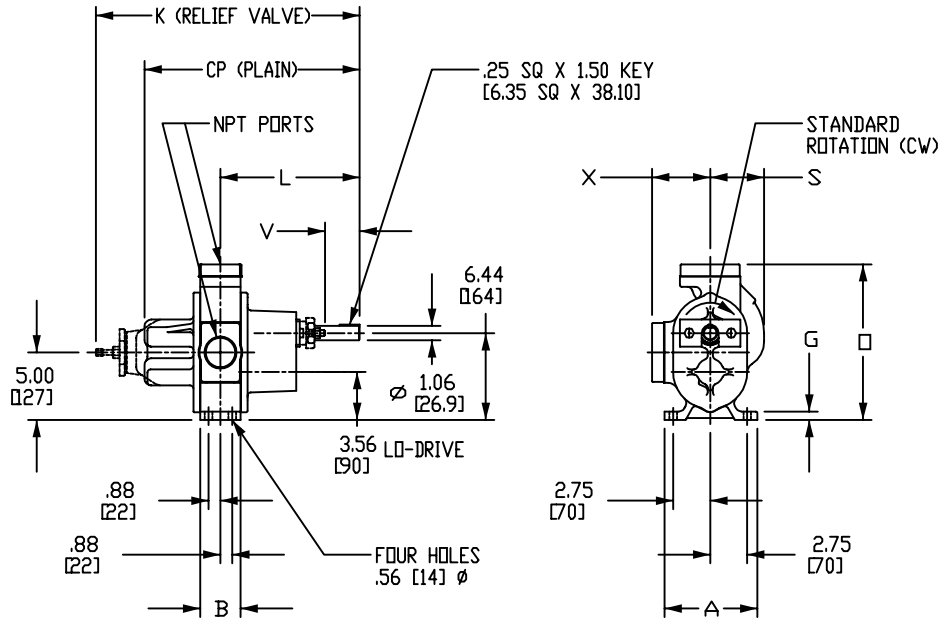


DO NOT SCALE
DIMS IN INCHES [MM]

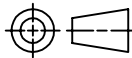


PUMP	A	B	CP	G	K	L	M	\square	PORTS	S	X	
3611 & 3711 BH	7.00 [178]	3.00 [76]	15.24 [387]	.75 [19]	18.84 [478]	9.61 [244]	9.89 [251]	10.75 [273]	2" TAPPED	4.00 [102]	3.62 [92]	
3611 & 3711 BHRV	.62 [16]			11.54 [293]				4.30 [109]				
3611 & 3711 BHF	6.88 [175]	.75 [19]	20.34 [517]	10.36 [263]	10.64 [270]	10.75 [273]	2" TAPPED	3.62 [92]				
3611 & 3711 BHFRV	11.54 [293]					4.30 [109]						
3617 & 3717 BH	7.00 [178]	3.50 [89]	16.74 [425]	.75 [19]	21.84 [555]	11.11 [282]	11.39 [289]	12.16 [309]	3" FLANGED		4.41 [112]	6.41 [163]
3617 & 3717 BHRV	7.00 [178]											
3617 & 3717 BHF	6.88 [175]	3.62 [92]	18.24 [463]	.75 [19]	21.84 [555]	11.11 [282]	11.39 [289]	12.16 [309]	3" FLANGED		4.41 [112]	6.41 [163]
3617 & 3717 BHFRV	6.88 [175]											
3622 & 3722 BHF	7.00 [178]	3.62 [92]	18.24 [463]	.75 [19]	21.84 [555]	11.11 [282]	11.39 [289]	12.16 [309]	3" FLANGED	4.41 [112]	6.41 [163]	
3622 & 3722 BHFRV	7.00 [178]											18.24 [463]

3611-3722 H,F,RV SPEC G TYPE 3



PROJECTION

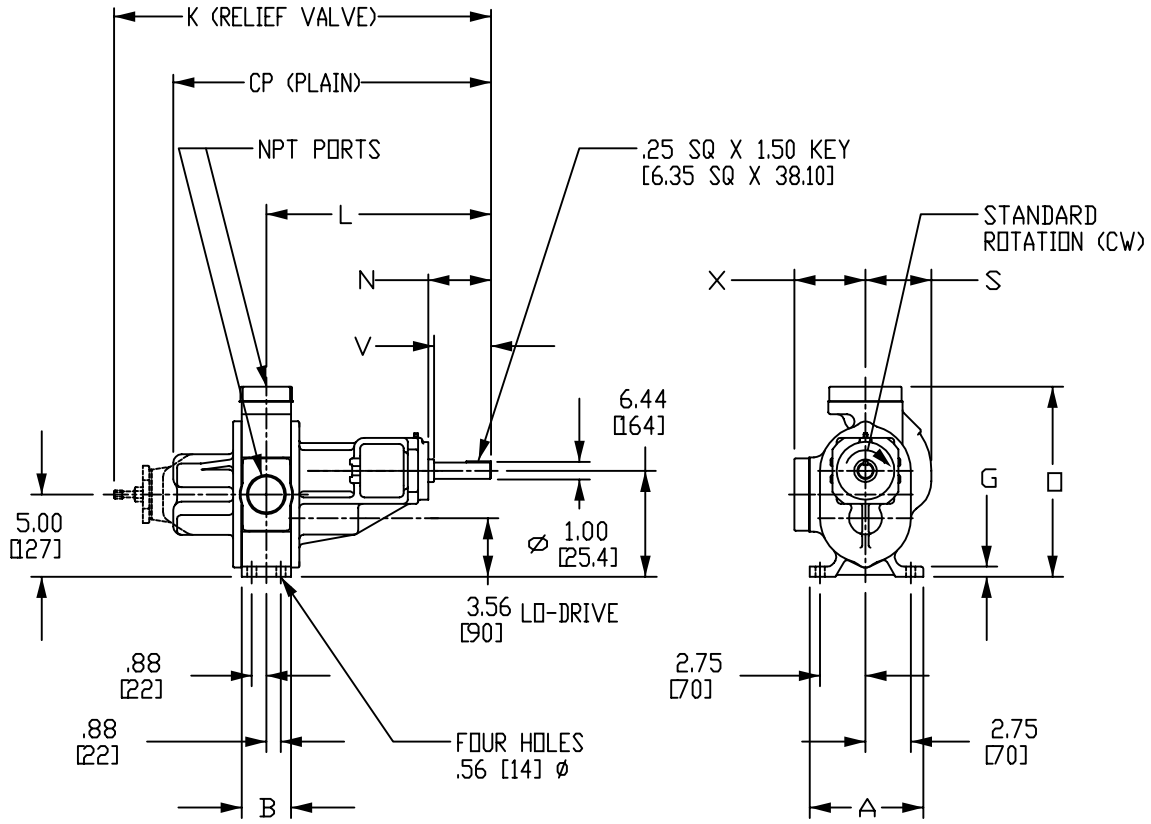


DO NOT SCALE
DIMS IN INCHES (MM)

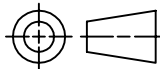
▲ PACKED BOX
★ MECH SEAL

PUMP	A	B	CP	G	K	L	□	PORTS	S	▲	V	★	X
3611 & 3711 H	7.00	3.00	15.97	.75	19.57	10.34	10.75	2" TAPPED	4.00	2.58	4.18	3.62	
3611 & 3711 HRV	[178]			[19]			[273]						[92]
3611 & 3711 HF	6.88	[76]	[406]	.62	[497]	[293]	11.54	2" FLANGED	4.00	2.58	4.18	4.30	
3611 & 3711 HFRV	[175]	[16]	[16]	[16]	[16]	[293]	[109]						
3617 & 3717 H	7.00	3.50	16.72	.75	20.33	10.34	10.75	2" TAPPED	4.00	1.83	3.43	3.62	
3617 & 3717 HRV	[178]						[516]						[273]
3617 & 3717 HF	6.88	[89]	[425]	[19]	[516]	[293]	11.54	2" FLANGED	4.00	1.83	3.43	4.30	
3617 & 3717 HFRV	[175]	[175]	[175]	[175]	[175]	[293]	[109]						
3622 & 3722 HF	7.00	3.62	18.59	.75	22.19	11.46	12.16	3" FLANGED	4.41	2.20	3.80	6.41	
3622 & 3722 HFRV	[178]	[92]	[472]		[564]	[291]	[309]						[112]

3611-3722 HB,F,RV TYPE 3



PROJECTION

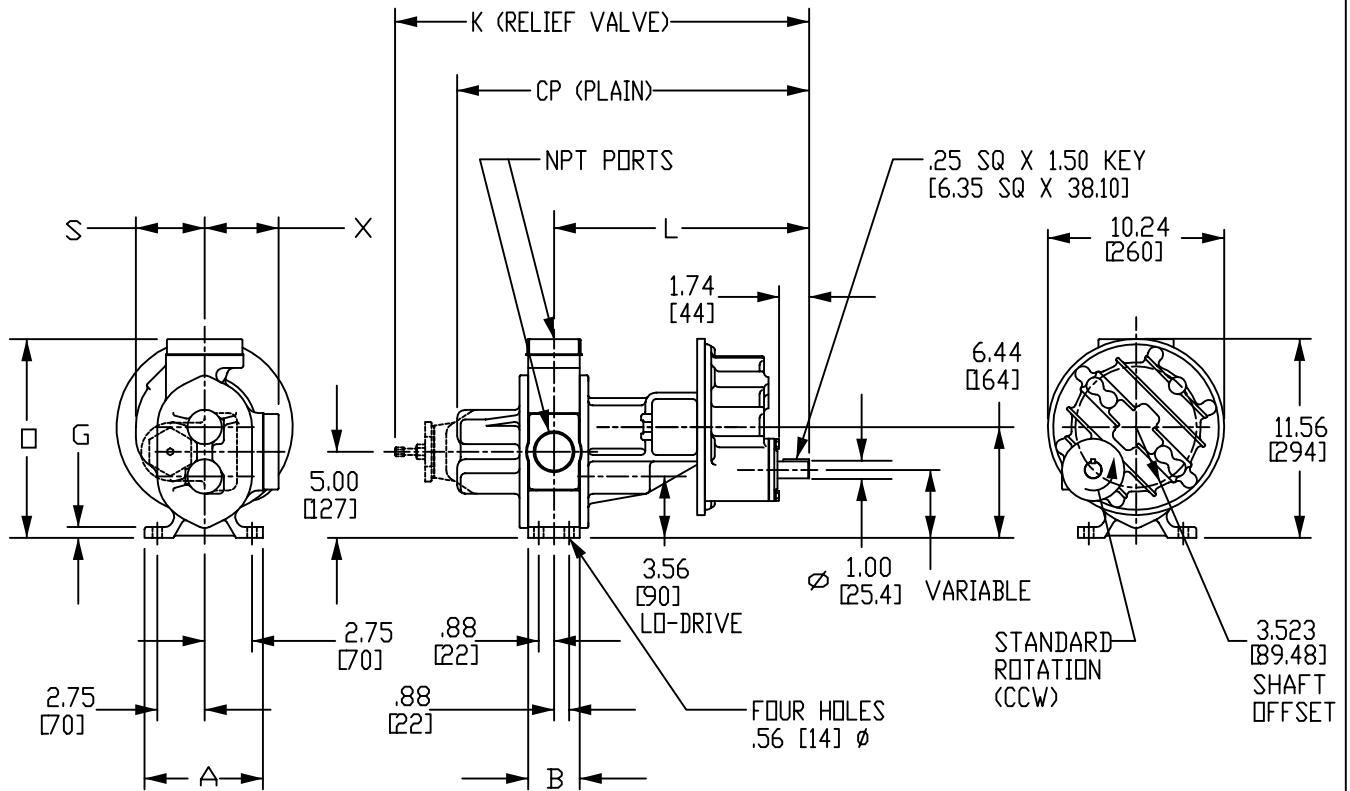


DO NOT SCALE
DIMS IN INCHES [MM]

N = SHAFT END TO BRG CAGE
V = FREE SHAFT LENGTH

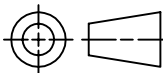
PUMP	A	B	CP	G	K	L	N	□	PORTS	S	V	X
3611 & 3711 HB	7.00	3.00	19.32	.75	22.92	13.69	3.80	10.75	2" TAPPED	4.00	3.45	3.62
3611 & 3711 HBRV	[178]			[19]				[582]				
3611 & 3711 HBF	6.88	[76]	[491]	.62	23.67	[348]	3.05	11.54	2" FLANGED	[102]	[88]	4.30
3611 & 3711 HBFV	[175]	[16]	[19]	[293]				[109]				
3617 & 3717 HB	7.00	3.50	20.07	.75	25.17	14.44	3.05	10.75	2" TAPPED	[102]	2.70	3.62
3617 & 3717 HBRV	[178]							[19]				
3617 & 3717 HBF	6.88	[89]	[510]	[19]	[367]	[309]	3.05	11.54	3" FLANGED	[102]	[69]	4.30
3617 & 3717 HBFV	[175]	[16]	[19]	[293]				[109]				
3622 & 3722 HBF	7.00	3.62	21.57	.75	25.17	14.44	3.05	12.16	3" FLANGED	4.41	[112]	6.41
3622 & 3722 HBFV	[178]	[92]	[548]					[19]				

3611-3722 GHB,F,RV TYPE 3



CAUTION:
LO-DRIVE CONFIGURATION CAUSES GEARBOX TO PROJECT BELOW MOUNTING SURFACE OF PUMP.

PROJECTION

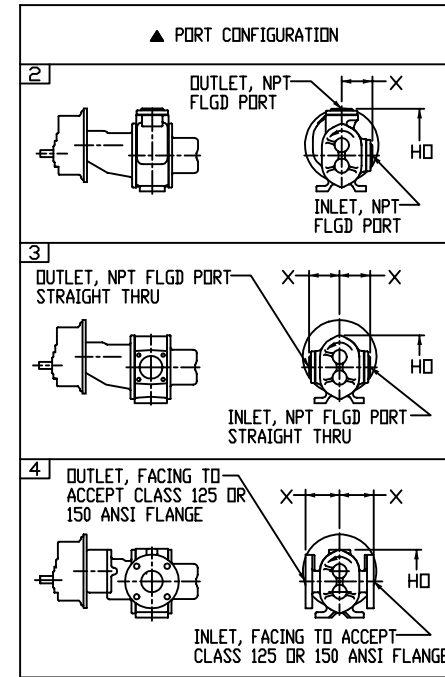
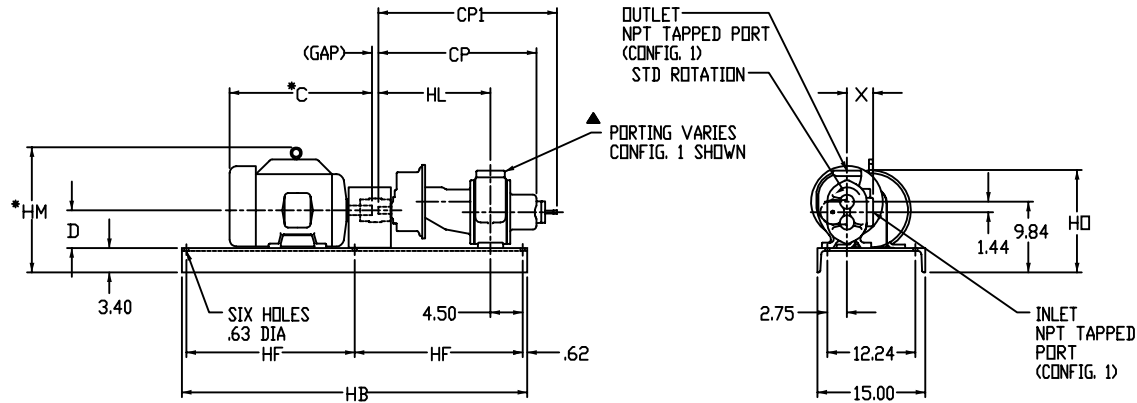


DO NOT SCALE
DIMS IN INCHES [MM]

N = SHAFT END TO BRG CAGE
V = FREE SHAFT LENGTH

PUMP	A	B	CP	G	K	L	\square	PORTS	S	X
3611 & 3711 GHB	7.00	3.00	20.47	.75	24.07	14.83	10.75	2" TAPPED	4.00	3.62
3611 & 3711 GHBRV	[178]			[19]			[611]			[273]
3611 & 3711 GHBF	6.88	[76]	[596]	.62	11.54	2" FLANGED	4.30			
3611 & 3711 GHBFV	[175]	[16]	[293]	[109]						
3617 & 3717 GHB	7.00	3.50	21.97	.75	25.57	15.58	10.75	2" TAPPED	[102]	3.62
3617 & 3717 GHBRV	[178]						[89]			[558]
3617 & 3717 GHBF	6.88	[175]	[19]	11.54	3" FLANGED	4.30				
3617 & 3717 GHBFV	[175]	[27.07]	[16.33]	[12.16]		[109]				
3622 & 3722 GHBF	7.00	3.62	23.47		27.07	16.33	12.16	4.41	6.41	
3622 & 3722 GHBFV	[178]	[92]	[596]		[688]	[415]	[309]	[112]	[163]	

3611-4722 MGHB,F,RV TYPE 3



✓	PUMP	PORT CONFIG.	PORT SIZE	X	HO	CP	CP1	HL	APPROXIMATE PUMP WEIGHT	
									PLAIN	W/RV
	3611-3711 GHBR,RV	1	2" NPT	3.62	14.15	20.47	24.07	14.83	105	109
	3611-3711 GHBF,RV	2	2" NPT FLG	4.30	14.94				105	109
	4611-4711 GHBF,RV	3	2" NPT FLG	4.17	12.84				105	109
	4611-4711 GHBA,RV	4	2" ANSI FLG	4.73	12.84	21.97	25.57	15.58	115	119
	3617-3717 GHBR,RV	1	2" NPT	3.62	14.15				123	127
	3617-3717 GHBF,RV	2	2" NPT FLG	4.30	14.94				123	127
	4617-4717 GHBF,RV	3	3" NPT FLG	4.41	12.84	23.47	27.07	16.33	123	127
	4617-4717 GHBA,RV	4	3" ANSI FLG	4.73	12.84				131	135
	3622-3722 GHBF,RV	2	3" NPT FLG	6.41	15.56				151	155
	4622-4722 GHBF,RV	3	4" NPT FLG	4.85	12.84	23.47	27.07	16.33	151	155
	4622-4722 GHBA,RV	4	4" ANSI FLG	5.53	12.90				157	161

✓	MOTOR FRAME	MOTOR WEIGHT	BASE/COUPLING/HARDWARE WEIGHT			*C	D	*HM	HB	HF	(GAP)
			11	17	22						
	143T	54	118	118	118	12.56	3.50	10.88	40	19.38	.50
	145T	65				12.82					
	182T	97	119	119	119	16.56	4.50	14.65	48	23.38	.88
	184T	110				18.06					
	213T	162	144	144	144	18.56	5.25	16.40	48	23.38	.88
	215T	189				21.09					
	254T	283	N/A	145	145	23.19	6.25	17.59	48	23.38	1.0
	256T	290				23.19					

✓ = UNIT SELECTED
DIMENSIONS IN INCHES
WEIGHTS IN POUNDS

* DIMENSIONS AND MOTOR WEIGHTS WILL VARY BASED ON MOTOR MANUFACTURER AND TYPE. CHART DIMENSIONS AND MOTOR WEIGHTS BASED ON TEFC 3 PHASE MOTORS.

RV = RELIEF VALVE
LOVEJOY COUPLINGS STANDARD

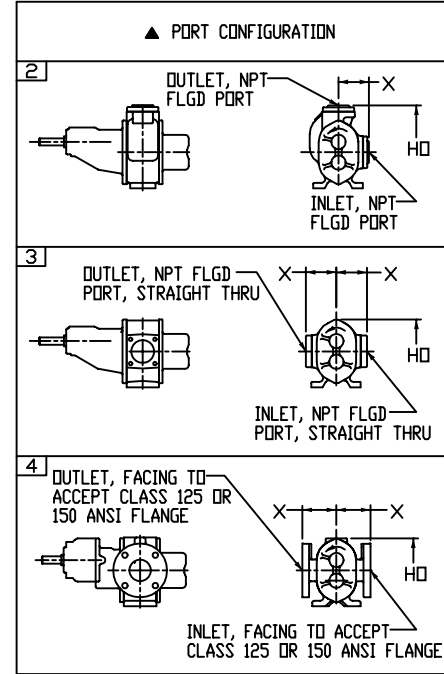
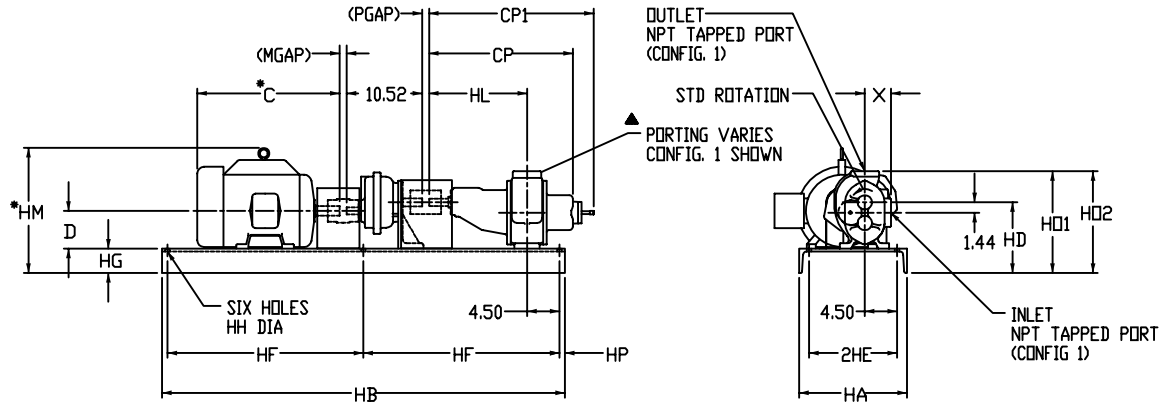


ROPER PUMP COMPANY
P.O. BOX 269
3475 OLD MAYSVILLE RD
COMMERCE, GEORGIA 30529 U.S.A.

TELEPHONE: (706) 335-5551
TELEFAX: (706) 335-5505

DATE: _____
PUMP NO.: _____
ROPER NO.: _____
CUSTOMER: _____
CUSTOMER NO.: _____
SERVICE: _____

3611-4722 MHB,F,RV TYPE 3
(WITH ROPER FIGURE 4125 GEAR REDUCER)



✓	PUMP	PORT CONFIG.	PORT SIZE	X	CP	CP1	HL	APPROXIMATE PUMP WEIGHT		143T-184T	213T-256T
								PLAIN	W/RV	HD1	HD2
	3611-3711 HB,RV	1	2" NPT	3.62	19.32	22.92	13.69	65	69	14.15	14.70
	3611-3711 HBF,RV	2	2" NPT FLG	4.30				65	69	14.94	15.49
	4611-4711 HBF,RV	3	2" NPT FLG	4.17				65	69	12.84	13.39
	4611-4711 HBA,RV	4	2" ANSI FLG	4.73	20.07	23.67	13.69	75	79	12.84	13.39
	3617-3717 HB,RV	1	2" NPT	3.62				83	87	14.15	14.70
	3617-3717 HBF,RV	2	2" NPT FLG	4.30				83	87	14.94	15.49
	4617-4717 HBF,RV	3	3" NPT FLG	4.41				83	87	12.84	13.39
	4617-4717 HBA,RV	4	3" ANSI FLG	4.73	21.57	25.17	14.44	91	95	12.84	13.39
	3622-3722 HBF,RV	2	3" NPT FLG	6.41				111	115	15.56	16.11
	4622-4722 HBF,RV	3	4" NPT FLG	4.85				111	115	12.84	13.39
	4622-4722 HBA,RV	4	4" ANSI FLG	5.53	117	121	12.90	117	121	12.90	13.45

✓	MOTOR FRAME	MOTOR WEIGHT	BASE/COUPLING/HARDWARE WEIGHT			*C	D	*HM	HA	HB	HD	2HE	HF	HG	HH	HP	(PGAP)	(MGAP)
			11	17	22													
	143T	54	150	150	150	12.56	3.50	10.88	15	48	9.84	12.24	23.38	3.4	.63	.62	.50	.50
	145T	65				12.82											.75	
	182T	97	154	154	154	16.56	4.50	14.65	18	56	10.39	15	27.25	3.95	.88	.75	.88	.88
	184T	110				18.06											.88	
	213T	162	219	219	219	18.56	5.25	16.94	18	56	10.39	15	27.25	3.95	.88	.75	.88	.88
	215T	189				21.09											.88	
	254T	283	223	223	223	23.19	6.25	18.13	18	56	10.39	15	27.25	3.95	.88	.75	1.0	1.0
	256T	290				23.19											1.0	

✓ = UNIT SELECTED

DIMENSIONS IN INCHES
WEIGHTS IN POUNDS

*DIMENSIONS AND MOTOR WEIGHTS WILL VARY BASED ON MOTOR MANUFACTURER AND TYPE. CHART DIMENSIONS AND MOTOR WEIGHTS BASED ON TEFC 3 PHASE MOTORS.

RV = RELIEF VALVE

FIGURE 4125 GEAR REDUCER WEIGHT - 55

LOVEJOY COUPLINGS STANDARD

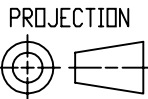
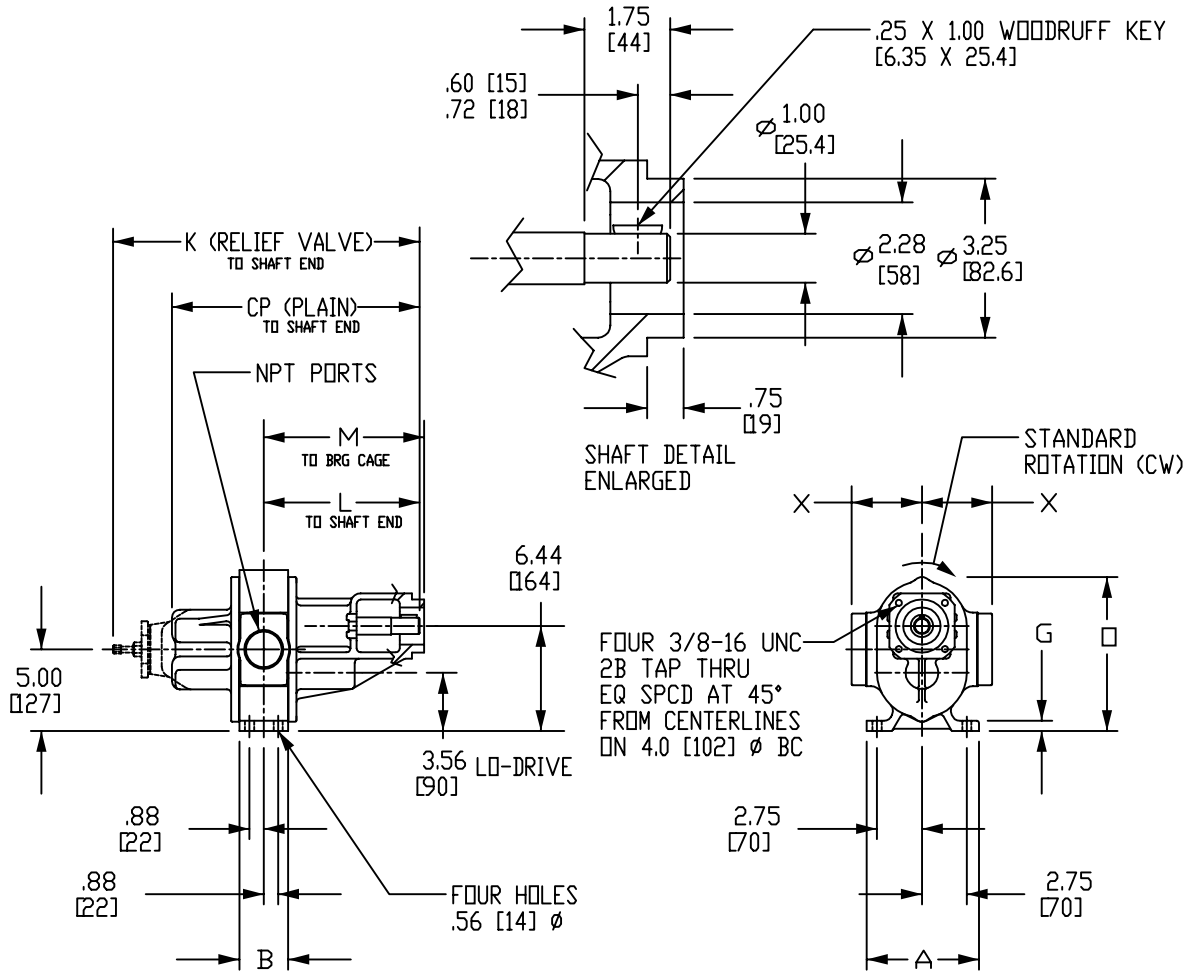


ROPER PUMP COMPANY
P.O. BOX 269
3475 OLD MAYSVILLE RD
COMMERCE, GEORGIA 30529 U.S.A.

TELEPHONE: (706) 335-5551
TELEFAX: (706) 335-5505

DATE: _____
PUMP NO.: _____
ROPER NO.: _____
CUSTOMER: _____
CUSTOMER NO.: _____
SERVICE: _____

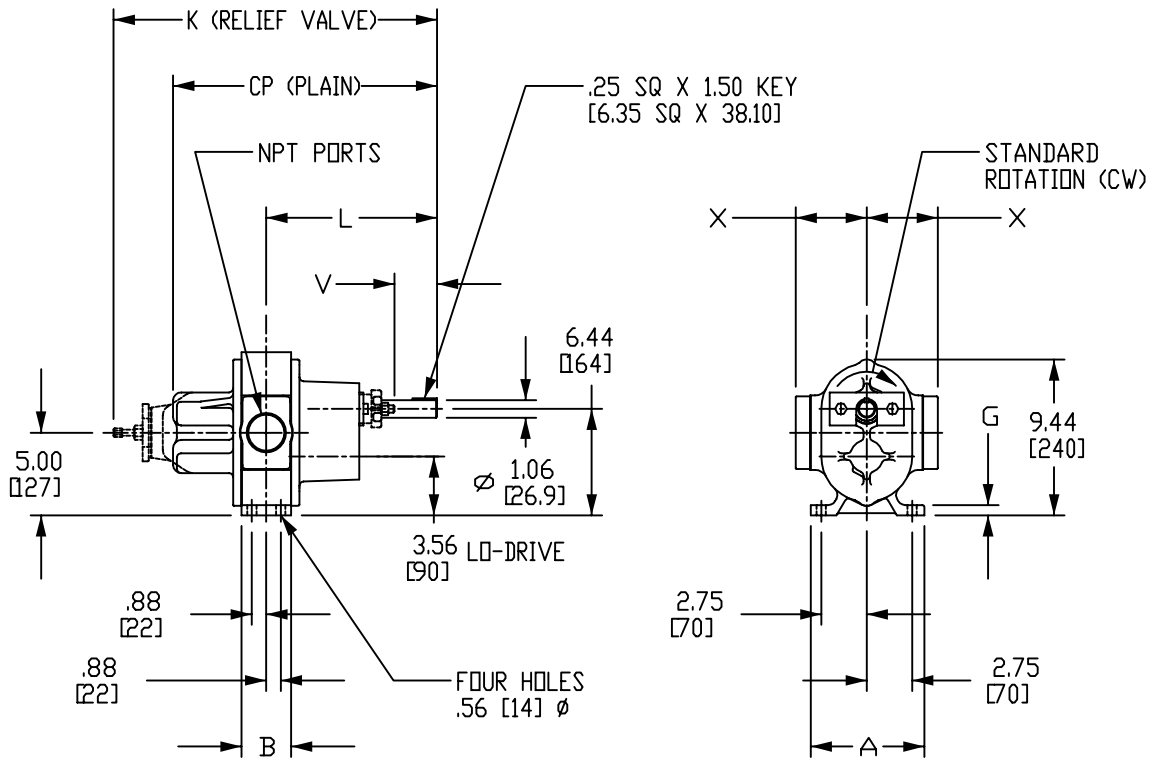
4611-4722 BHF,RV TYPE 3



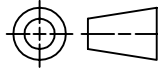
DO NOT SCALE
DIMS IN INCHES [MM]

PUMP	A	B	CP	G	K	L	M	PORTS	X
4611 & 4711 BHF	6.50 [165]	3.00	15.24	.62	18.84	9.61	9.89	2" FLANGED	4.17 [106]
4611 & 4711 BHFRV		[76]	[387]	[16]	[478]	[244]	[251]		
4617 & 4717 BHF	6.50 [165]	4.50	16.74	.75 [19]	20.34	10.36	10.64	3" FLANGED	4.41 [112]
4617 & 4717 BHFRV		[114]	[425]		[517]	[263]	[270]		
4622 & 4722 BHF	7.00	3.62	18.24	.75 [19]	21.84	11.11	11.39	4" FLANGED	4.85 [123]
4622 & 4722 BHFRV	[178]	[92]	[463]		[555]	[282]	[289]		

4611-4722 HF,RV SPEC G TYPE 3



PROJECTION

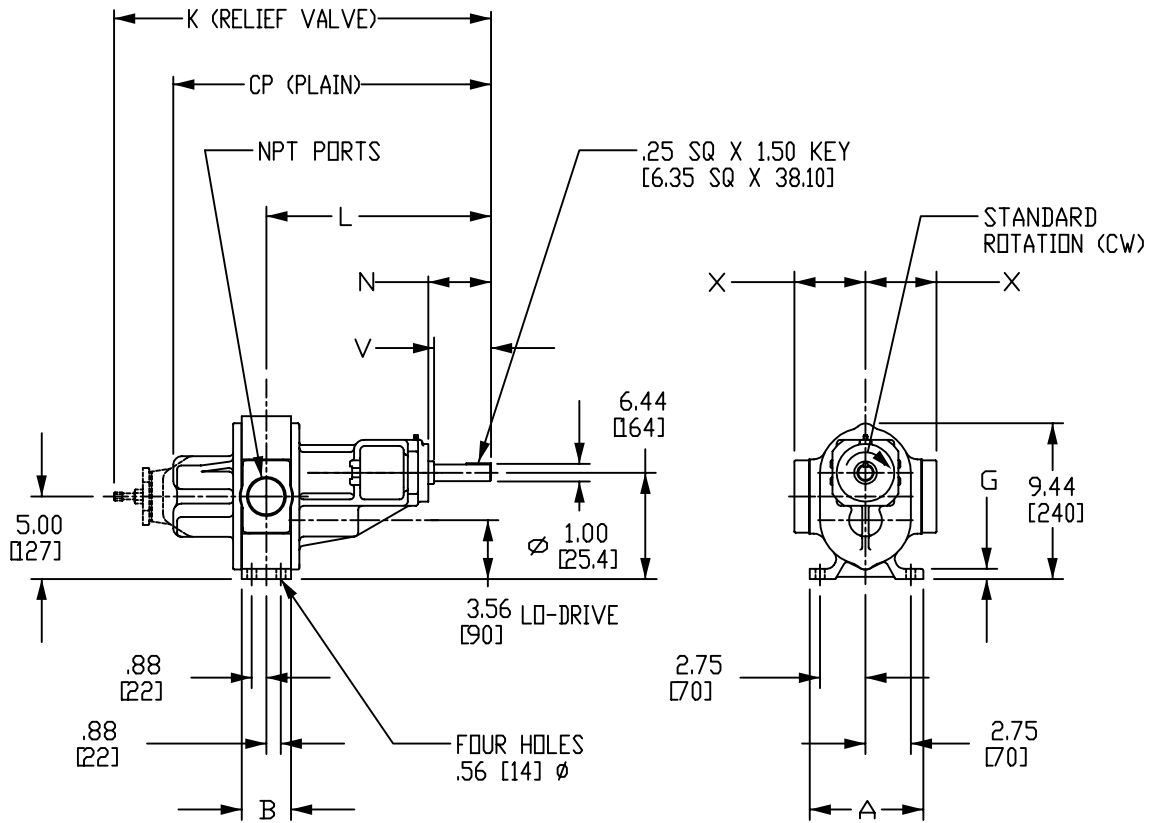


DO NOT SCALE
DIMS IN INCHES [MM]

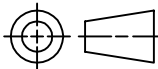
▲ PACKED BOX
★ MECH SEAL

PUMP	A	B	CP	G	K	L	PORTS	▲ V ★	X	
4611 & 4711 HF	6.50 [165]	3.00 [76]	15.97 [406]	.62 [16]	19.57 [497]	10.34 [263]	2" FLANGED	2.58 [66]	4.18 [106]	4.17 [106]
4611 & 4711 HFRV		4.50 [114]	16.72 [425]	.75 [19]	20.33 [516]		3" FLANGED	1.83 [47]	3.43 [87]	4.41 [112]
4617 & 4717 HF	7.00 [178]	3.62 [92]	18.59 [472]	.75 [19]	22.19 [564]	11.46 [291]	4" FLANGED	2.20 [56]	3.80 [96]	4.85 [123]
4617 & 4717 HFRV		3.62 [92]	18.59 [472]	.75 [19]	22.19 [564]		4" FLANGED	2.20 [56]	3.80 [96]	4.85 [123]

4611-4722 HBF,RV TYPE 3



PROJECTION



DO NOT SCALE
DIMS IN INCHES [MM]

N = SHAFT END TO BRG CAGE
V = FREE SHAFT LENGTH

PUMP	A	B	CP	G	K	L	N	PORTS	V	X
4611 & 4711 HBF	6.50 [165]	3.00 [76]	19.32 [491]	.62 [16]	22.92 [582]	13.69 [348]	3.80 [97]	2" FLANGED	3.45 [88]	4.17 [106]
4611 & 4711 HBFRV		4.50 [114]	20.07 [510]	.75 [19]	23.67 [610]			3" FLANGED	2.70 [69]	4.41 [112]
4617 & 4717 HBF	7.00 [178]	3.62 [92]	21.57 [548]	.75 [19]	25.17 [639]	14.44 [367]	3.05 [77]	4" FLANGED	2.70 [69]	4.85 [123]
4617 & 4717 HBFRV										4.85 [123]

