

# EXAMPLES OF FLEXIBLE PUMP INSTALLATIONS

**Industrial/Marine application:** The 30540-0013 pump with Nitrile high pressure impeller powered by a Gast air motor was chosen to deliver 40-80 gallons per minute of deionized water at 40 psi. The customer, Electric Boat in Groton, CT, needed an explosion proof (fuel vapors present), air driven, variable speed pump to hydro test their ultra-pure water system on a research vessel.



**Industrial application:** The 30510- close-coupled series mounted with an inline 2 to 1 gear reducer and 1800 rpm single phase motor was chosen to transfer GE super abrasive. The abrasion resistant epoxy plastic head combined with the inexpensive gear reducer provided a cost effect solution to the customer's required transfer rate of 3-4 gpm of this extremely abrasive liquid.



**Sanitary food application:** A manufacturer of corn chips required a portable pump to use throughout their plant to quickly transfer corn batter into chip forming machines. Our solution was the sanitary 30570 series mounted on a stainless cart with washdown duty motor and a Nema 4 starter.

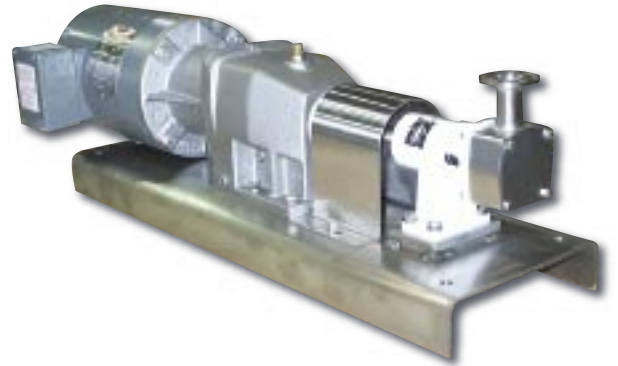


**Water/Waste water application:** We choose the 30530-0001 pump mounted with a 3 horsepower, three phase, 1200 rpm explosion proof motor to move effluent water with small fines (<1%, <100 mesh) and small soft particles (<5%, <.5"). The installation required 10-15 foot suction lift and a flow of 25 gallons per minute at 20 psi.



# EXAMPLES OF FLEXIBLE PUMP INSTALLATIONS

**Biomedical:** A biomedical research group in California required a sanitary pump to deliver a variable flow of water like liquid with a flooded suction. The flow range was from .4 - 4 gallons per minute with a discharge pressure of 10 psi. We selected the 30560-1015 pedestal pump with high-pressure neoprene impeller mounted with a gear reducer, three phase motor and powered by a variable speed inverter.



**Industrial:** A small budget minded industrial customer required an economical single-phase pump assembly to transfer an extremely viscous liquid. Variable or precise flow was not required. They just wanted to move it from here to there electrically. We chose the 30520-0013 pump with high pressure Nitrile impeller belt driven with a 3 hp, 1800 rpm motor and mounted on an inexpensive aluminum base with guard.



**Nuclear Power Plant:** A nuclear power plant required a portable utility pump to move a wide varied of liquids within their facility. We selected the 30520-2004 with Viton seal and impeller driven by a 1200 rpm motor (for higher viscosities) and mounted on a "dolly" cart wired with motor contactor, cord and plug.



**Sanitary:** A food plant required a sanitary transfer pump to move large quantities of product into a filling machine. They also wanted the ability to vary rpm to allow various flow rates. We selected the 30580-0005 mounted on a stainless base with a 3 horsepower washdown duty, inverter motor.



# EXAMPLES OF FLEXIBLE PUMP INSTALLATIONS

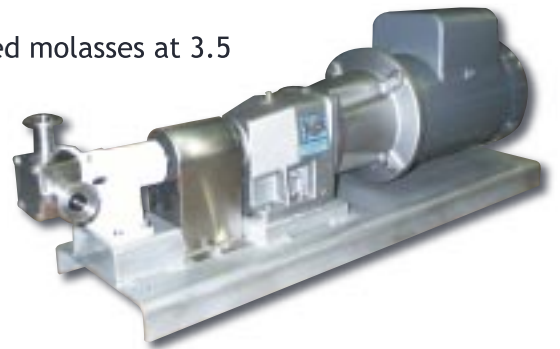
**Sanitary:** Minute Maid required 6 pump and motor units to transfer orange juice pulp from pasteurizers into the orange juice stream. The pulp was at 36 degrees Fahrenheit and relatively viscous. They also required three different flow ranges. We recommended and sold (2) 30550-1015, (3) 30580-1015, and (1) 30570-1015 pumps mounted with gear reducers and washdown duty inverter motors.



**Beverage:** A small eastern US winery requested an inexpensive stainless steel portable variable flow transfer pump for use in his vineyard. We provided the 30520-2001 with 90vdc motor and 115vac input SCR variable speed drive mounted on an inexpensive "dolly" cart. The customer was thrilled and referred several of his friends that resulted in additional sales.



**Food:** A food plant in northern Florida required a pump to feed molasses at 3.5 gallons per minute at 20 psi into his process. The viscosity was so high it required the use of a hopper feed into the suction of the pump and a gear reduced motor. We selected the 30560-1015 with high-pressure neoprene impeller base mounted with the required inline gear reducer and three horsepower gear reduced motor.

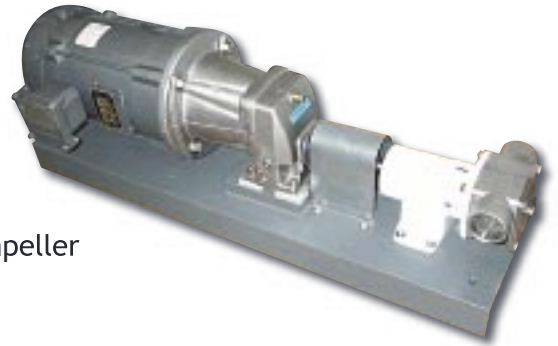


**Sanitary:** A food plant in New Jersey required the transfer of ground corn, lime, and water slurry (100 centipoises) at ambient temperature, with flooded suction. It was to be installed in an area with fine meal dust (explosive) and required the variable flow of 0-4 gallons per minute at 30 feet of head. We selected the 30550-1115 pump with tungsten carbide seal, high-pressure neoprene impeller with a 2 to 1 gear reduced explosion proof motor.



# EXAMPLES OF FLEXIBLE PUMP INSTALLATIONS

**Environmental:** A remediation company required a pump to remove liquid out of the bottom of their “knock-out” tank. This tank is kept under vacuum to draw liquid in from contaminated areas. The pump needed to be explosion proof (fuel vapors present), able to pull against the vacuum created by the tank and pass a limited amount of hard and soft solids. We selected the 30530-0014 with high-pressure Viton impeller mounted with a gear reduced explosion proof motor.



**Industrial:** A company needed a cost effective self-priming pump to transfer 80 gallons per minute of water with some soft solids from a settling pond. The pump was to be mounted outside and only operated occasionally. We selected the 18370-0000 driven by a 3 horsepower, three phase wash-down duty motor and mounted on a painted channel.

