



PRICE PUMP CO.

RC-V Parts List
New (June 1996) Keyed Shaft Style
Effective: March 25, 1998

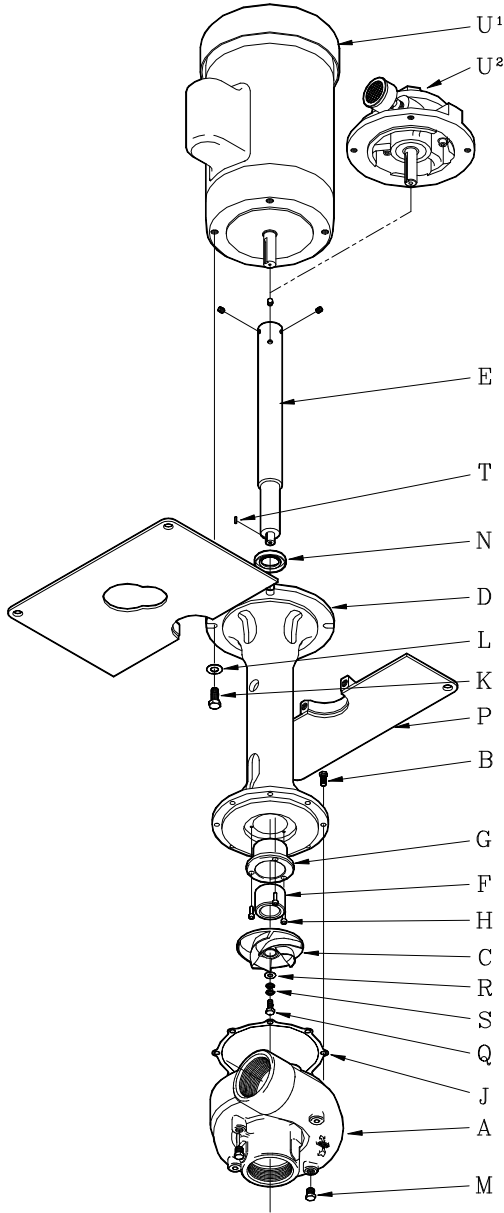


Table with 4 columns: Part Name, RC200V, RC200/300V, RC300V. Rows include Volute, Volute Bolts, Impeller, Column Assembly, Shafts, Bushing Plate, and various gaskets and bolts.

* Note: These part numbers are the new keyed style parts. For the old threaded style part numbers review the RC-V Parts List dated January 1993.

** Note: If using an optional silicon carbide bushing, the shaft must be tungsten coated - Contact Factory

Price® Pump Company

21775 8th Street East ♦ P.O. Box Q ♦ Sonoma, CA 95476-0329 ♦ (707) 938-8441 ♦ Fax (707) 938-0764

(RCVpart6.doc Parts 98)

SS = Stainless Steel
CI = Cast Iron

Price® Pump Company

21775 8th Street East ♦ P.O. Box Q ♦ Sonoma, CA 95476-0329 ♦ (707) 938-8441 ♦ Fax (707) 938-0764