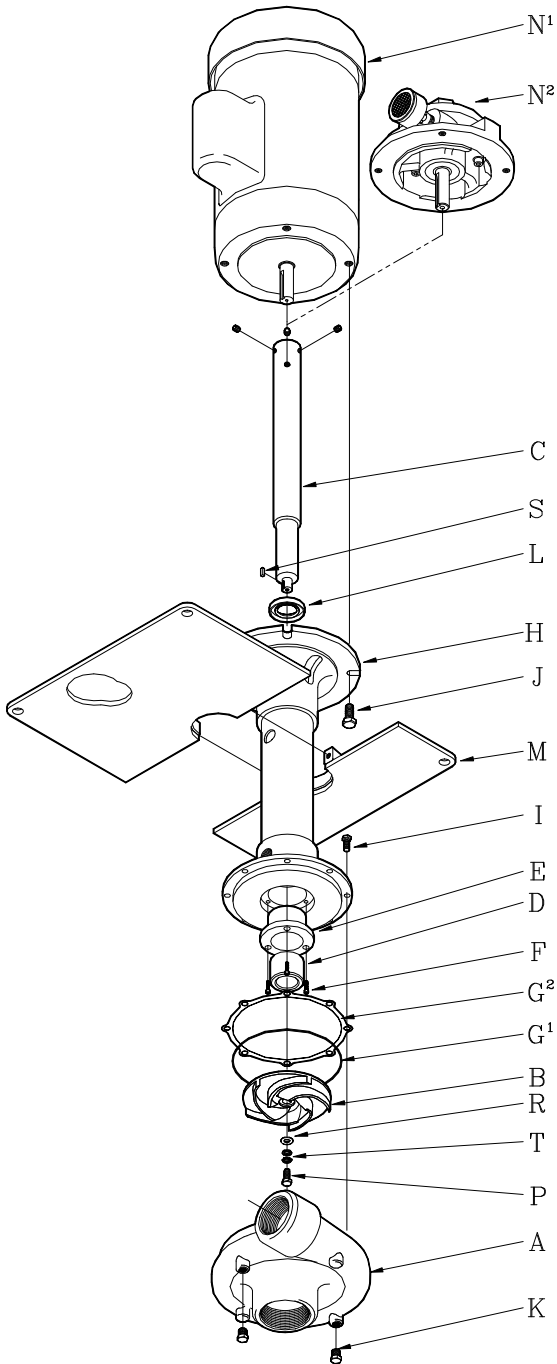




PRICE PUMP CO.

CD SS VERTICAL PARTS LIST

Effective: June 17, 1997



(CDVSSPr6. parts 97)

* Note: If using an optional silicon carbide bushing the shaft must be tungsten coated - Contact factory
SS = Stainless Steel

Table with 3 columns: Part Name, CD100VSS, CD150VSS. Includes parts A through T and N1, N2 with their respective part numbers and diameters.

Price® Pump Company