

2CP

two stage centrifugal pumps

Two stage pumps recognised for their high efficiency, versatility and quiet running.



RANGE OF PERFORMANCE

Flow rate up to 400 l/min (24 m³/h)
Head up to 112 m

LIMITS OF USE

Manometric suction lift up to 7 m
Liquid temperature up to + 90°C
Liquid temperature up to + 40°C in the 2CPX version
(with technopolymer impeller)
Environment temperature up to + 40°C

CONSTRUCTION AND SAFETY STANDARDS

EN 60034-1
IEC 34-1
CEI 2-3



INSTALLATION AND USE

They are recommended for pumping clean water and liquids that are chemically non aggressive to the materials from which the pump is made. **THEIR HIGH EFFICIENCY AND ADAPTABILITY TO THE MOST VARIED, EVEN UNUSUAL APPLICATIONS, MAKE THEM THE IDEAL CHOICE IN THE DOMESTIC, CIVIL AND INDUSTRIAL FIELD; IN PARTICULAR FOR DISTRIBUTING WATER IN COMBINATION WITH PRESSURE SETS, FOR INCREASING PRESSURE IN THE MAINS, FOR FIRE-FIGHTING SETS.**

The pumps must be installed in enclosed places, or at least protected against inclement weather.

GUARANTEE 2 YEARS subject to our general terms of sale.

CONSTRUCTION CHARACTERISTICS

- **MOTOR SHAFT:** stainless steel EN 10088-3 - 1.4104.
- **MECHANICAL SEAL:** ceramic - graphite - NBR.
- **ELECTRIC MOTOR:** the pumps are close-coupled to a carefully matched PEDROLLO electric motor, **with high efficiency (class EFF1 for powers from 4 to 7.5 kW)**, quiet running, totally enclosed fan cooled (TEFC), suitable for continuous duty.
2CPm: single-phase 230 V - 50 Hz with capacitor and thermal overload protector (up to 1.5 kW).
2CP: three-phase 230/400 V - 50 Hz up to 4 kW.
400/690 V - 50 Hz from 5.5 to 7.5 kW.
- **INSULATION:** class F. ● **PROTECTION:** IP 44.

2CP 25/130N

- **PUMP BODY:** cast iron, with threaded ports ISO 228/1.
- **BODY BACK-PLATE:** stainless steel AISI 304.
- **IMPELLER:** stainless steel AISI 304 of the type with centrifugal radial flow.

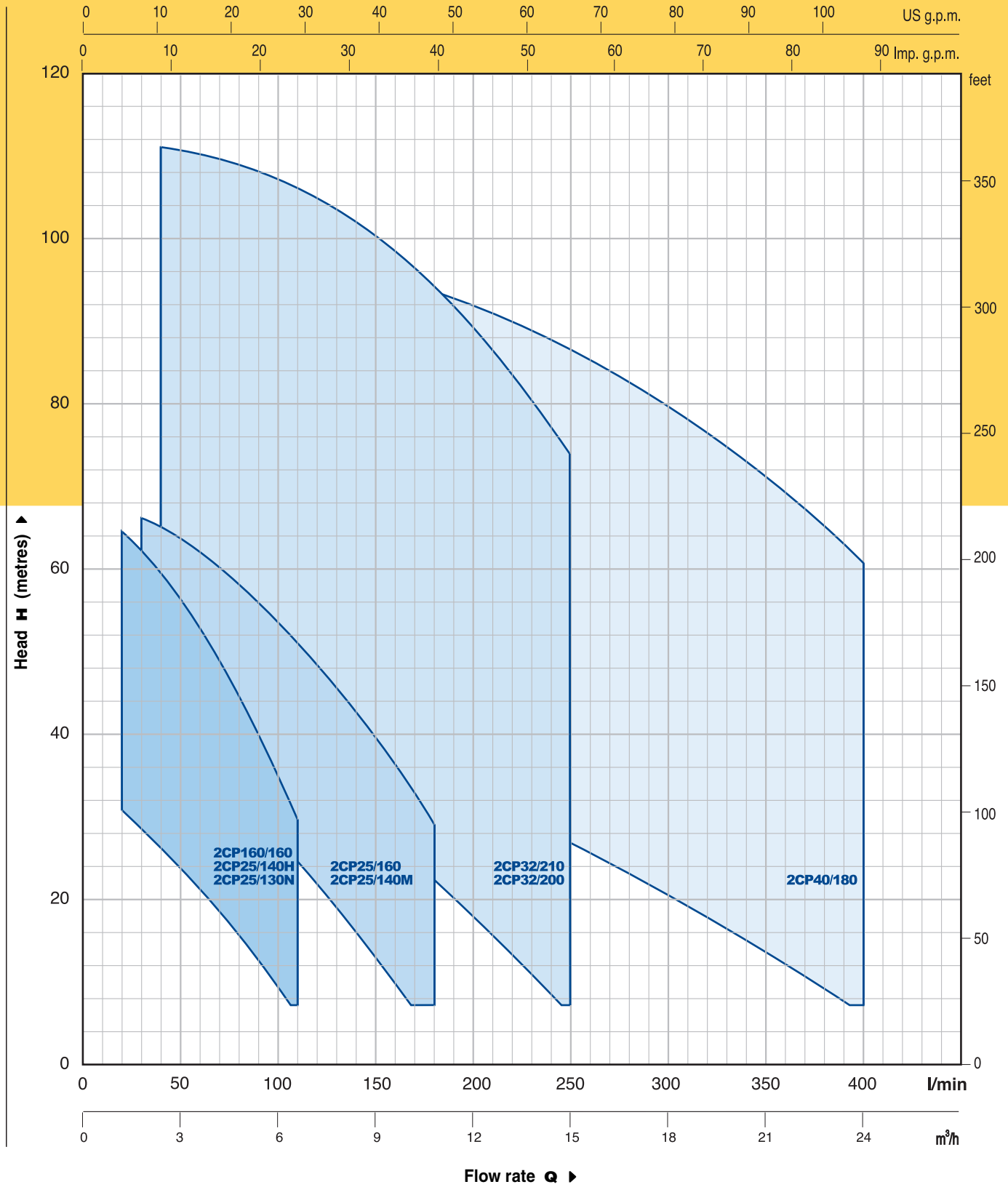
Other 2CP

- **PUMP BODY:** cast iron, with threaded ports ISO 228/1.
- **IMPELLERS:** brass, of the type with centrifugal radial flow.

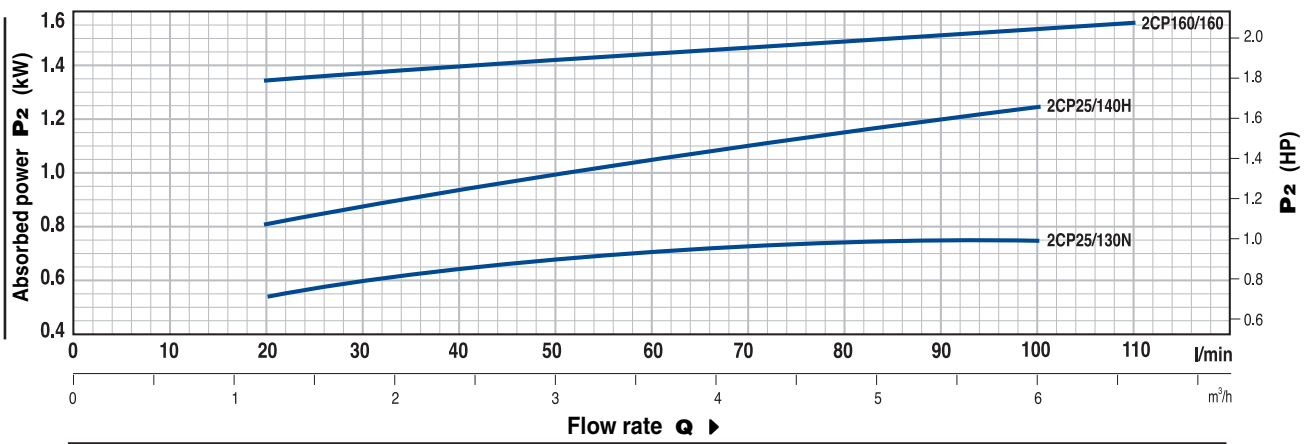
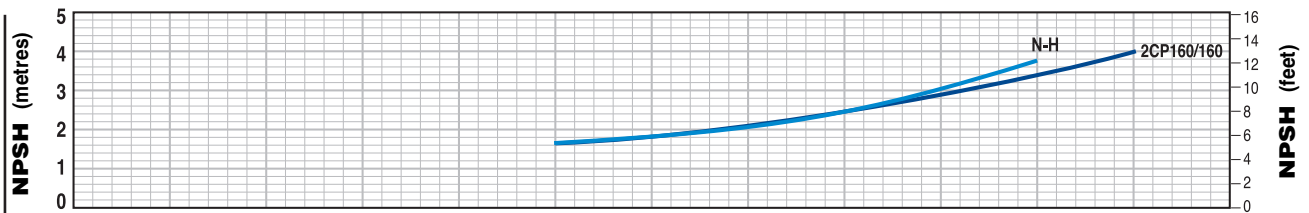
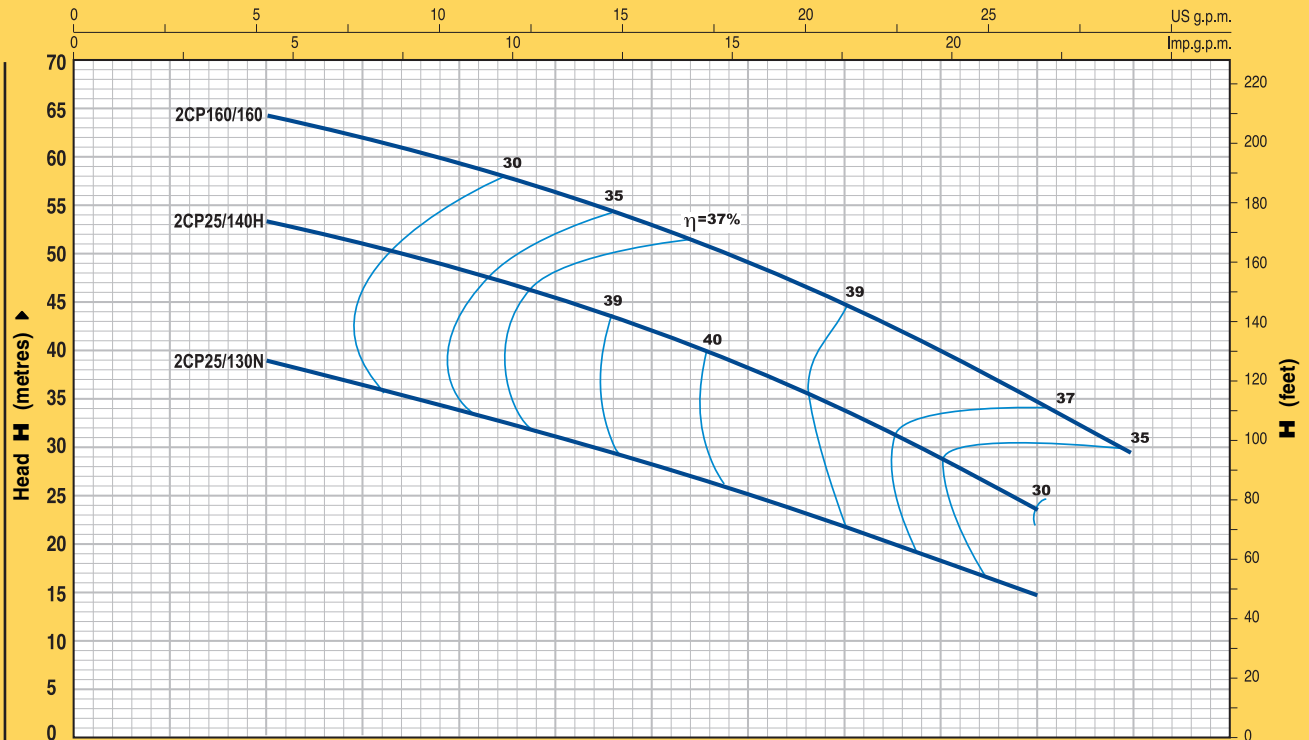
OPTIONS ON REQUEST

- ⇒ impeller in **technopolymer** (2CPm...X - 2CP...X)
- ⇒ special mechanical seal
- ⇒ other voltages or frequency 60 Hz

RANGE OF PERFORMANCE AT n= 2900 1/min



CURVES AND PERFORMANCE DATA AT n= 2900 1/min

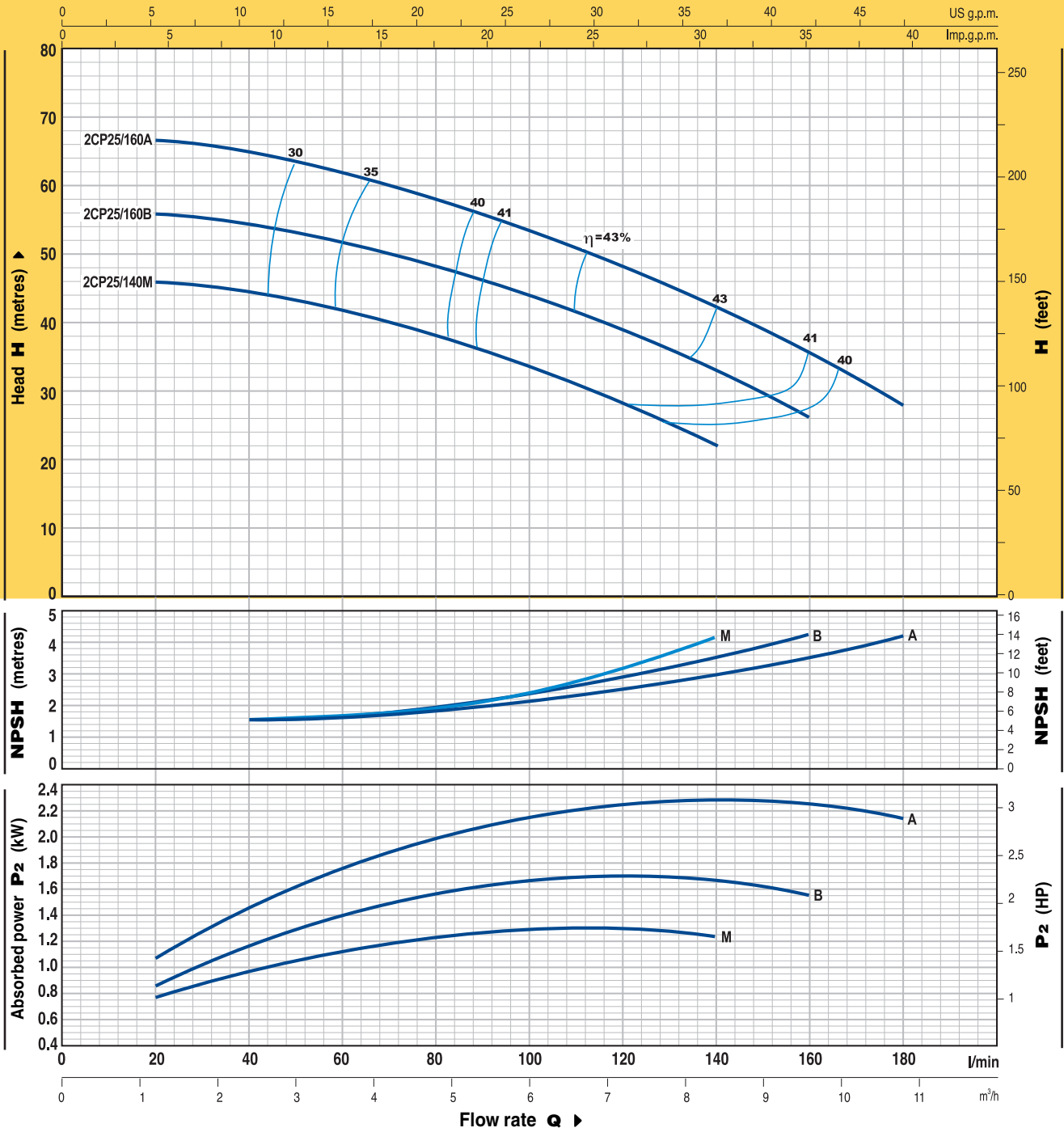


TYPE		POWER		Flow rate Q													
Single-phase	Three-phase	kW	HP	0	1.2	1.8	2.4	3.0	3.6	4.2	4.8	5.4	6.0	6.6			
				Q	m³/h												
				l/min	0	20	30	40	50	60	70	80	90	100	110		
2CPm 25/130N	2CP 25/130N	0.75	1	H metres	42	39	37	34	31	28.5	25.5	22	18	15			
2CPm 25/140H	2CP 25/140H	1.1	1.5		54	53	51	49	46	42	38	34	29	24			
2CPm 160/160	2CP 160/160	1.5	2		66	64	62	60	57	53	49	44	39.5	35	30		

Q = Flow rate H = Total manometric head

Tolerance of the performance curves according to EN ISO 9906 App. A.

CURVES AND PERFORMANCE DATA AT n= 2900 1/min

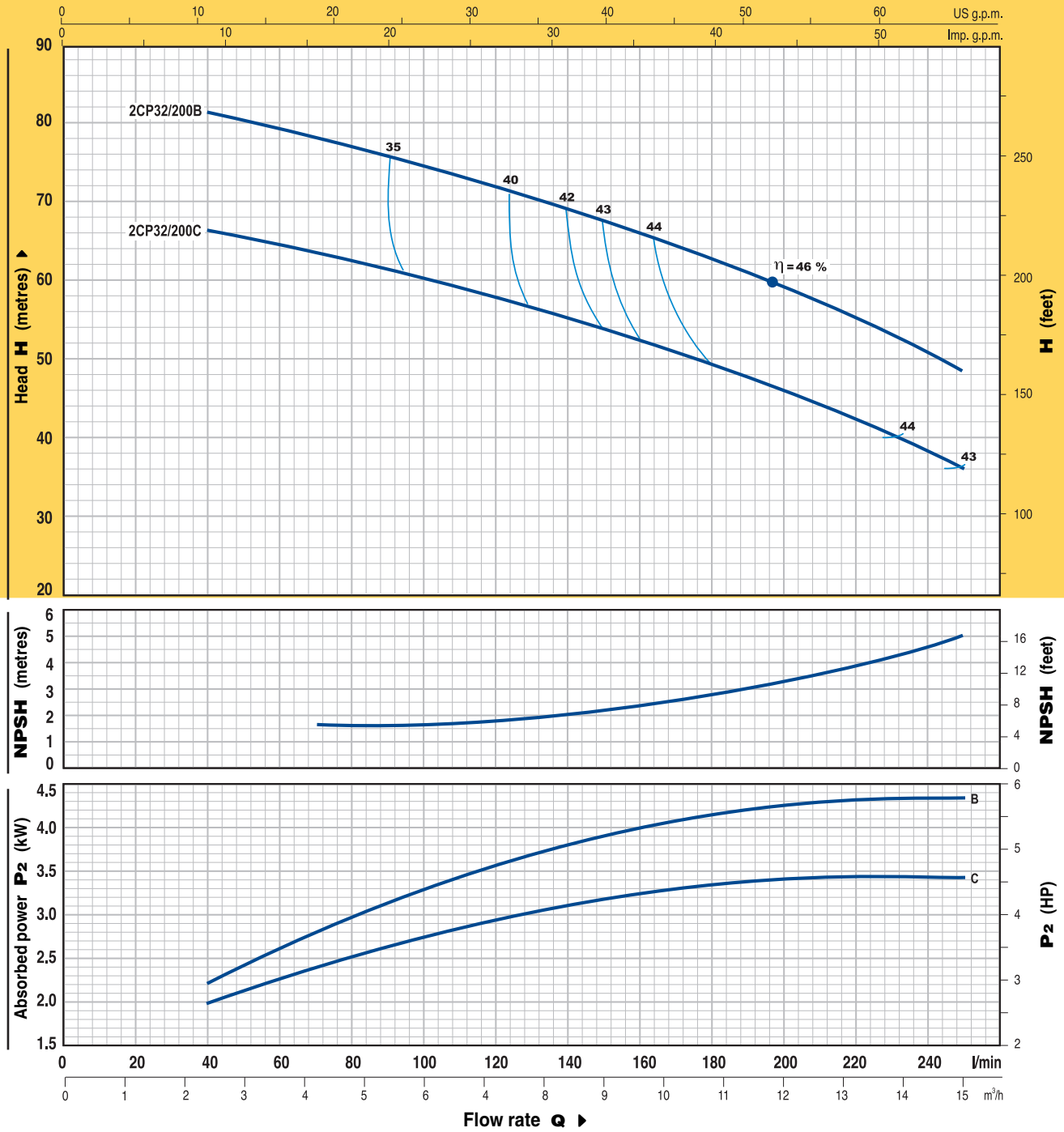


TYPE		POWER		Q	Flow rate															
Single-phase	Three-phase	kW	HP		0	1.2	1.8	2.4	3.0	3.6	4.2	4.8	5.4	6.0	6.6	7.5	8.4	9.6	10.8	
2CPm 25/140M	2CP 25/140M	1.1	1.5	l/min	0	20	30	40	50	60	70	80	90	100	110	125	140	160	180	
				H metres	47	46	45.5	44	43	42	41	38	36	34	31	27	22			
					58	56	55	54	53	52	50	48	46	44	41	37	33	26		
					68	66.5	65.5	65	63	62	60	58	56	54	51	47	42	35	28	

Q = Flow rate H = Total manometric head

Tolerance of the performance curves according to EN ISO 9906 App. A.

CURVES AND PERFORMANCE DATA AT n= 2900 1/min

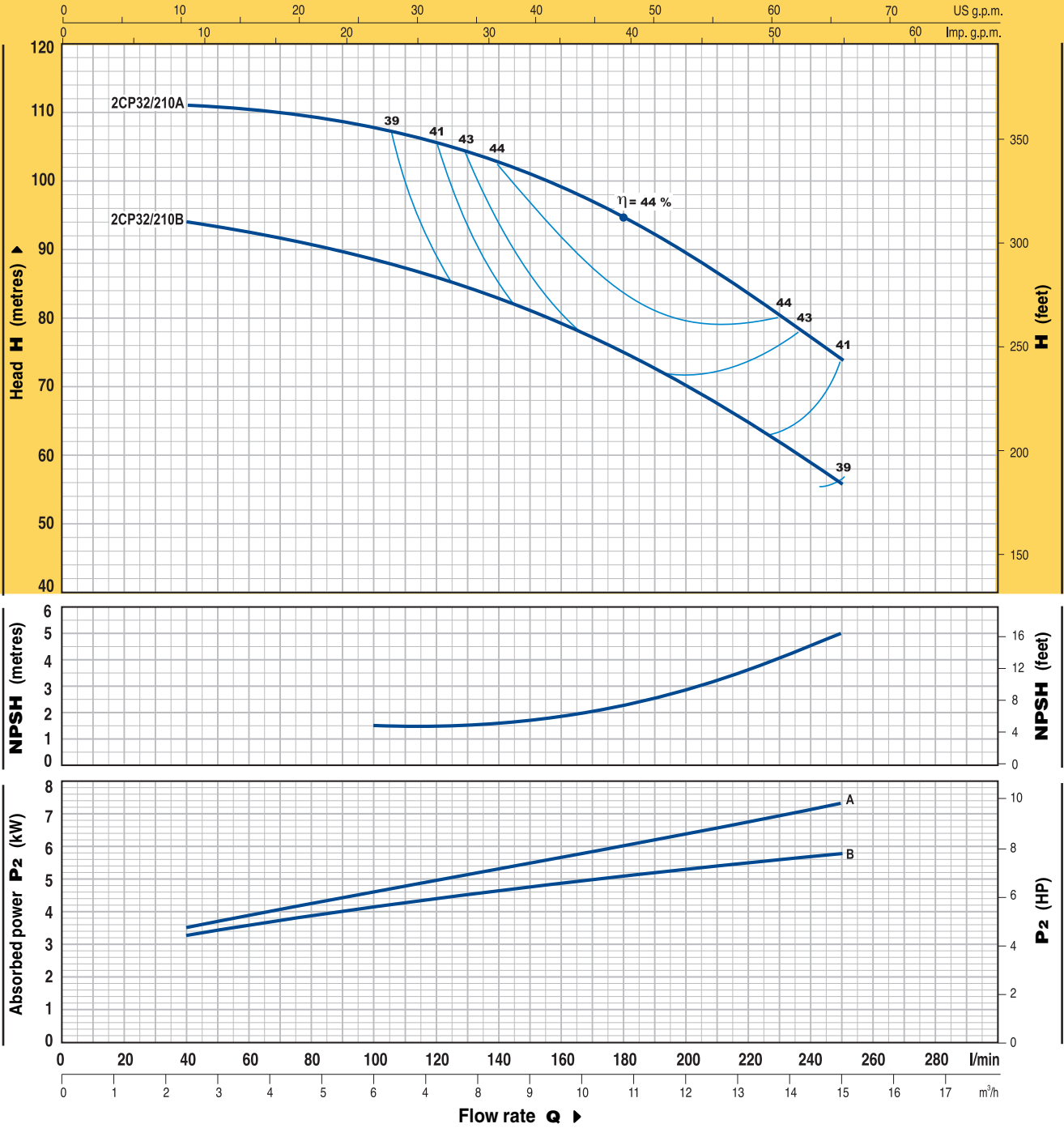


TYPE		POWER		Q	Flow rate														
Single-phase	Three-phase	kW	HP		m³/h	0	2.4	3.0	3.6	4.2	4.8	5.4	6.0	6.6	7.5	8.4	9.6	10.8	12.0
				l/min	0	40	50	60	70	80	90	100	110	125	140	160	180	200	250
—	2CP 32/200C	3	4	H metres	70	66.5	65.5	65	64	63	62	60.5	59	57	55	52	49.5	46.5	36
—	2CP 32/200B	4	5.5	H metres	85	81	80	79	78	77	76	75	74	72	69	66	62	58	49

Q = Flow rate H = Total manometric head

Tolerance of the performance curves according to EN ISO 9906 App. A.

CURVES AND PERFORMANCE DATA AT n= 2900 1/min

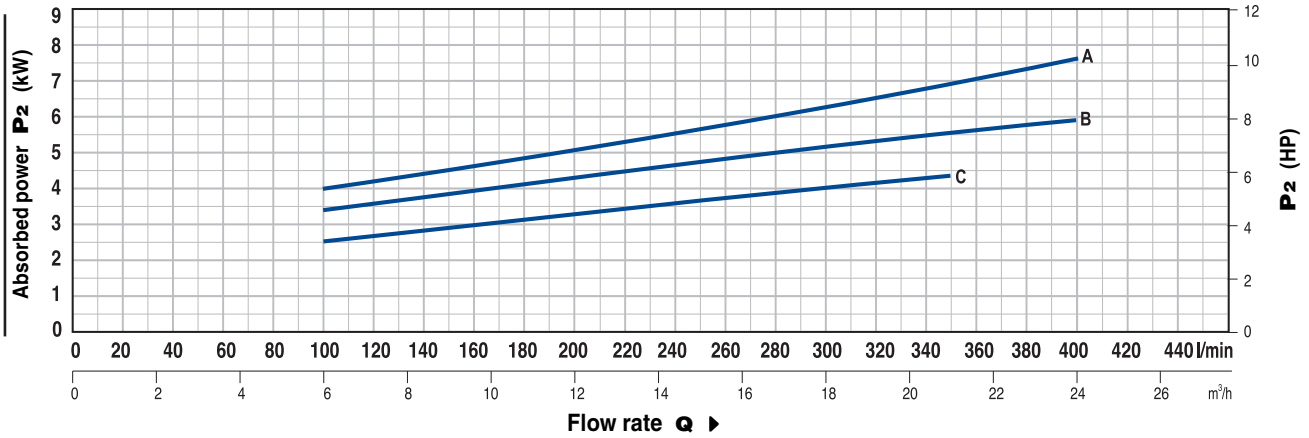
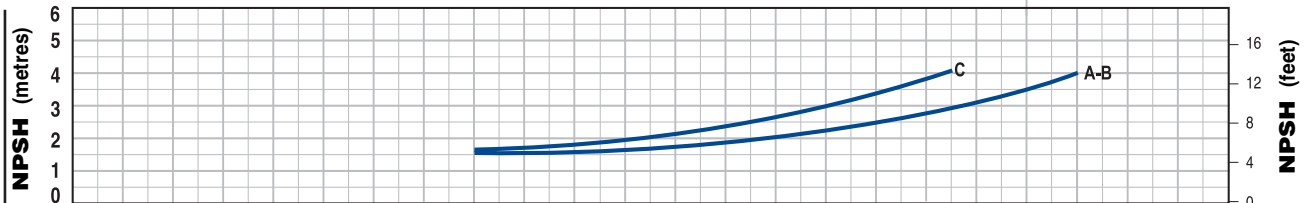
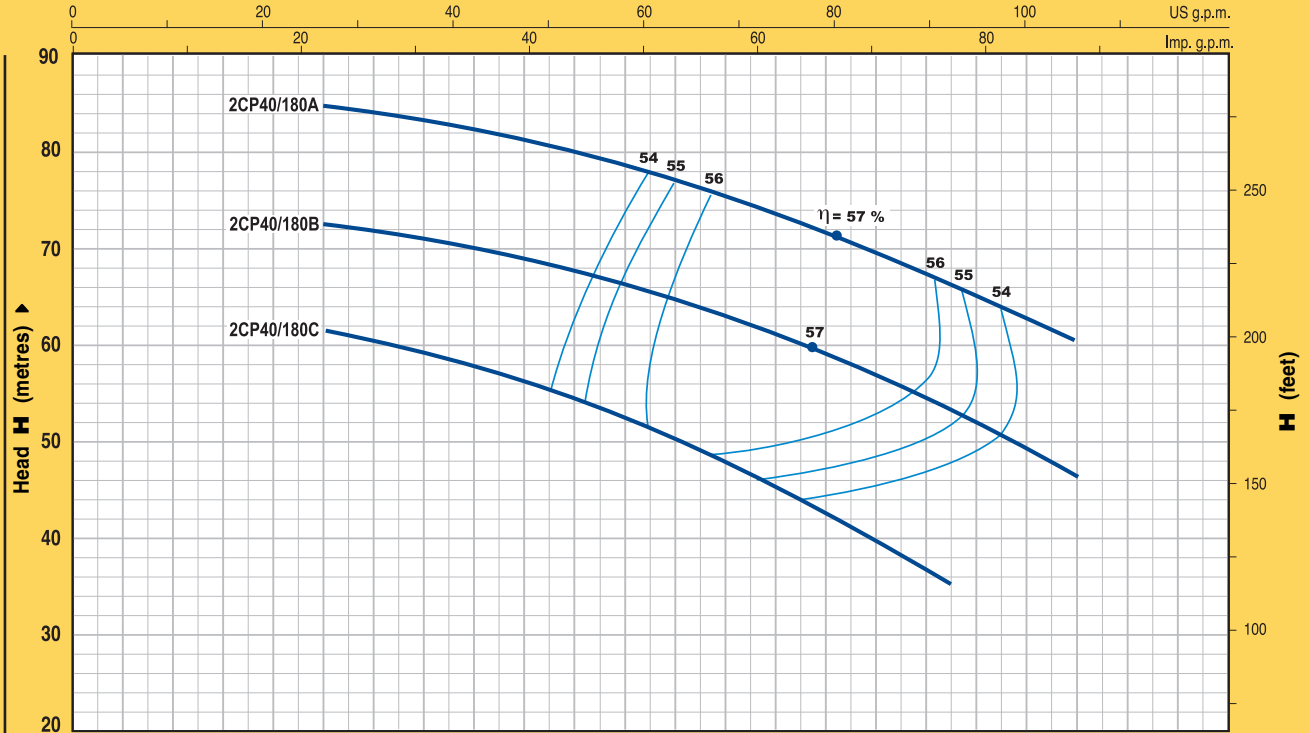


TYPE	POWER		Q	Flow rate														
	kW	HP		m ³ /h	0	2.4	3.0	3.6	4.2	4.8	5.4	6.0	6.6	7.5	8.4	9.6	10.8	12.0
Three-phase			l/min	0	40	50	60	70	80	90	100	110	125	140	160	180	200	250
2CP 32/210B	5.5	7.5	H metres	94	94	93.5	93	92	91	90	89	87	85	83	79	75	70	56
2CP 32/210A	7.5	10		112	111	110.8	110.5	110.3	110	109	108	107	105	102	99	94	89	74

Q = Flow rate H = Total manometric head

Tolerance of the performance curves according to EN ISO 9906 App. A.

CURVES AND PERFORMANCE DATA AT n= 2900 1/min

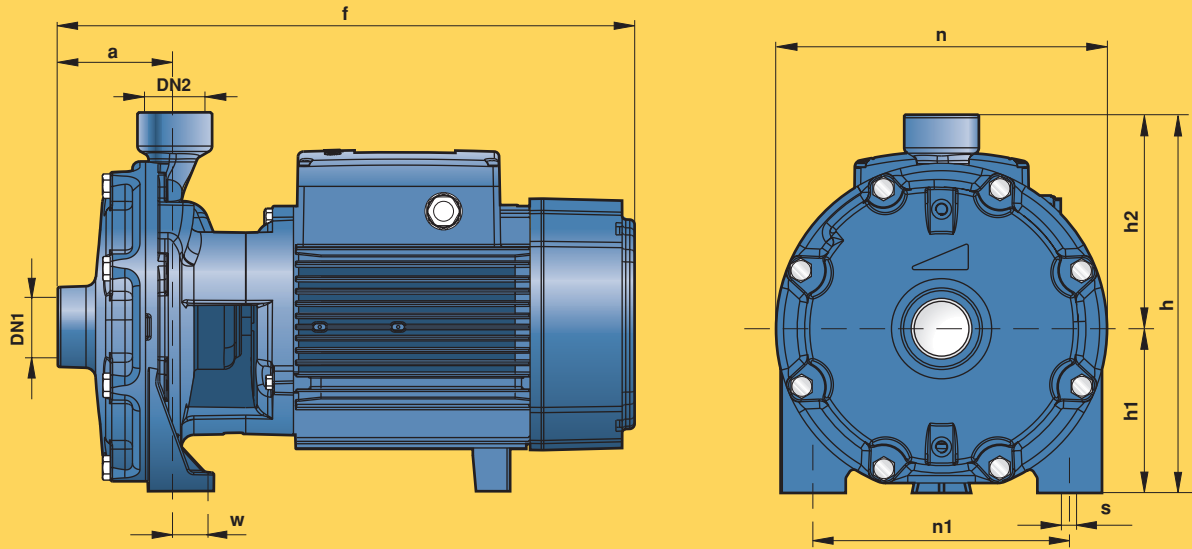


TYPE	POWER		Q	Flow rate												
	kW	HP		m ³ /h	0	6.0	6.6	7.5	8.4	9.6	10.8	12.0	15.0	18.0	21.0	24.0
Three-phase			l/min	0	100	110	125	140	160	180	200	250	300	350	400	
2CP 40/180C	4	5.5	H metres	64	62	61	60	59	58	56	54.5	49	43	35		
2CP 40/180B	5.5	7.5		76	73	72.5	72	71	70	69	67.5	64	59.5	54	46	
2CP 40/180A	7.5	10		88	85	84.5	84	83	82	81	79.5	76	72	67	60	

Q = Flow rate H = Total manometric head

Tolerance of the performance curves according to EN ISO 9906 App. A.

DIMENSIONS AND WEIGHTS



TYPE		PORTS		DIMENSIONS mm									kg	
Single-phase	Three-phase	DN1	DN2	a	f	h	h1	h2	n	n1	w	s	1~	3~
2CPm 25/130N	2CP 25/130N	1 1/4"	1"	73	330	201	92	109	180	142	1	10	14.5	14.0
2CPm 25/140H	2CP 25/140H			74	382	225	93	132	200	162	23		20.1	19.4
2CPm 160/160	2CP 160/160			84	405	263	110	153	225	185	26	11	24.8	24.1
2CPm 25/140M	2CP 25/140M			74	382	225	93	132	200	162	23	10	20.1	19.2
2CPm 25/160B	2CP 25/160B	1 1/2"	1"	86	407	263	110	153	225	185	26	11	24.6	25.2
—	2CP 25/160A			-	-	26.1								
2CPm 32/200C	2CP 32/200C	1 1/4"	1"	95	464	304	132	172	266	206	19	14	42.9	39.1
—	2CP 32/200B			-	-	42.9								
—	2CP 32/210B	-	-	56.0										
—	2CP 32/210A	-	-	61.7										
—	2CP 40/180C	2"	1 1/2"	108	542	334	139	195	292	232	21	14	-	61.7
—	2CP 40/180B				496								-	49.8
—	2CP 40/180A				542								-	55.1
—	2CP 40/180A	-	-	-	-	-	-	-	-	-	-	-	60.8	