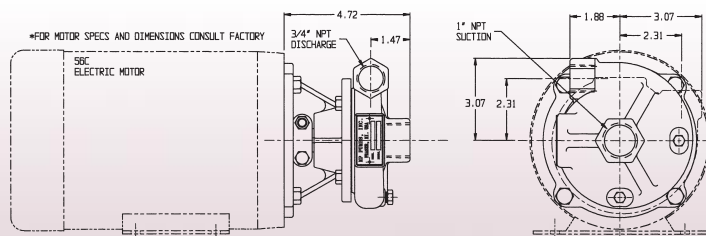


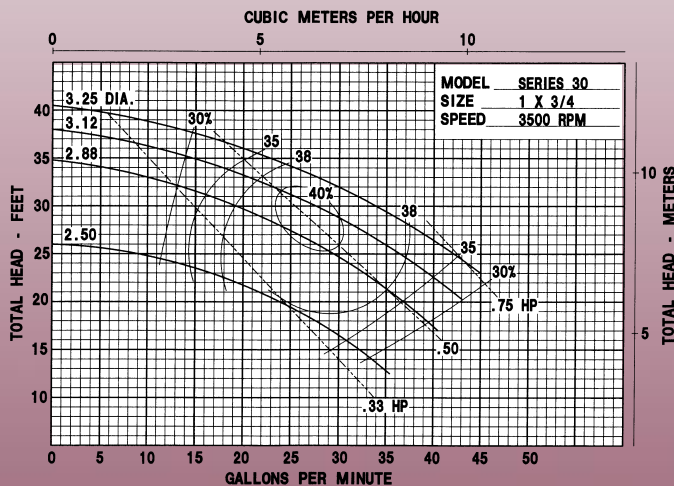
Features & Options

- 1" X 3/4" CENTRIFUGAL PUMP
- CLOSE COUPLED TO ELECTRIC MOTOR
- OR PUMPAK ONLY TO MOUNT TO STANDARD NEMA "C" FACE MOTOR .3HP, .5HP, .75HP, 1HP
- FLOWS TO 40 GPM
- PRESSURES TO 40 FEET HEAD
- AVAILABLE IN: CAST IRON, BRONZE OR ALUMINUM CONSTRUCTION
- VERTICAL OR HORIZONTAL DISCHARGE
- WITH OR WITHOUT ELECTRIC MOTOR
- IMPELLER—CAST IRON, BRONZE OR ALUMINUM—SEMI-OPEN
- SHAFT SLEEVE—STAINLESS STEEL WITH 5/8" SHAFT
- FASTENERS—STAINLESS STEEL
- SEALS—STANDARD VITON, OPTIONAL SEALS AVAILABLE (CONSULT FACTORY)
- OPTIONS: —ENGINE DRIVES
—PEDESTAL MODELS
—HYDRAULIC DRIVES
—CLUTCHPAKS

DIMENSIONS



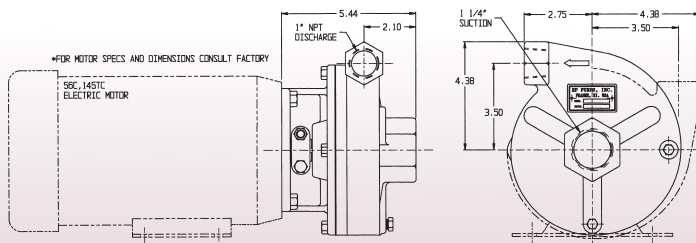
Pump Performance Curves



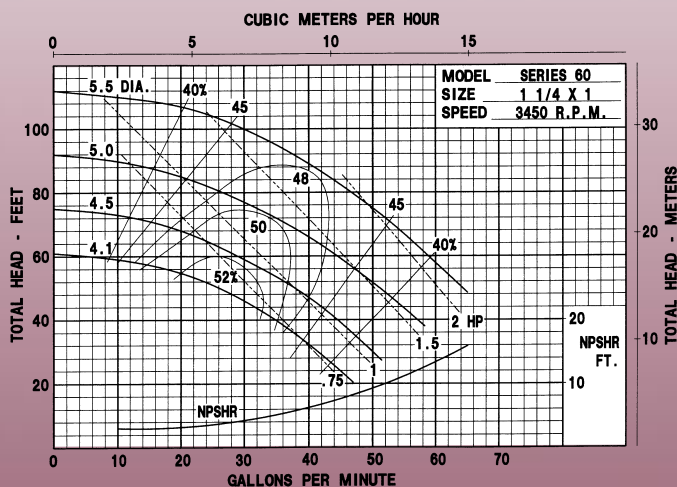
Features & Options

- 1 1/4" X 1" CENTRIFUGAL PUMP
- CLOSE COUPLED TO ELECTRIC MOTOR
- OR PUMPAK ONLY TO MOUNT TO STANDARD NEMA "C" FACE MOTOR 1HP, 1.5HP, 2HP
- FLOWS TO 60 GPM
- PRESSURES TO 110 FEET HEAD
- AVAILABLE IN CAST IRON
- VERTICAL OR HORIZONTAL DISCHARGE
- WITH OR WITHOUT ELECTRIC MOTOR
- IMPELLER—CAST IRON OR BRONZE ENCLOSED
- SHAFT SLEEVE—STAINLESS STEEL TO FIT 5/8" SHAFT
- FASTENERS—STAINLESS STEEL
- SEALS—STANDARD VITON, OPTIONAL SEALS AVAILABLE (CONSULT FACTORY)
- OPTIONS: —HYDRAULIC DRIVES

DIMENSIONS



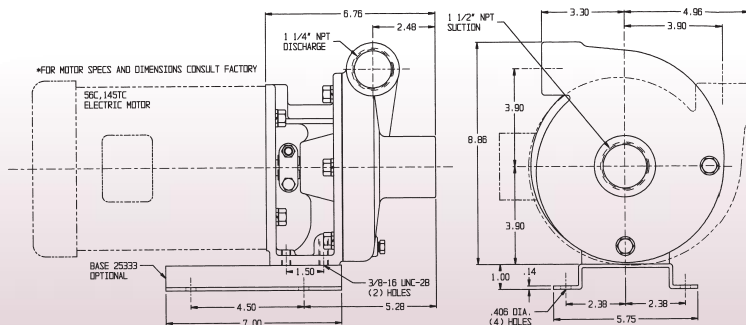
Pump Performance Curves



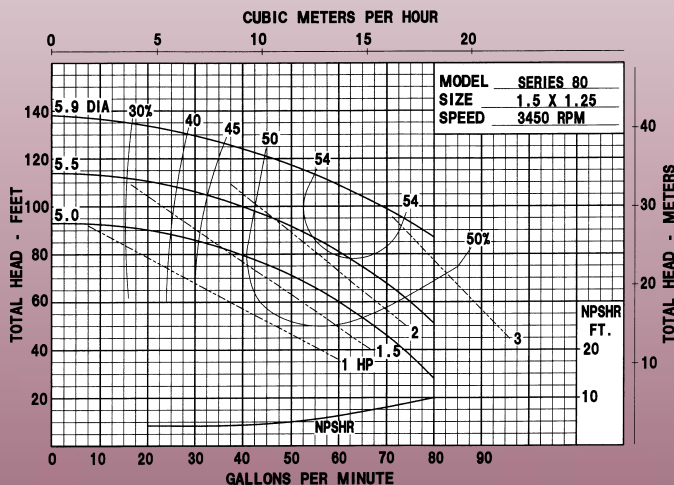
Features & Options

- 1½" X 1¼" CENTRIFUGAL PUMP
- CLOSE COUPLED TO ELECTRIC MOTOR
- OR PUMPAK ONLY TO MOUNT TO STANDARD NEMA "C" FACE MOTOR
1.5HP, 2HP, 3HP
- FLOWS TO 80 GPM
- PRESSURES TO 140 FEET HEAD
- AVAILABLE IN: CAST IRON OR BRONZE CONSTRUCTION
- VERTICAL OR HORIZONTAL DISCHARGE
- WITH OR WITHOUT ELECTRIC MOTOR
- IMPELLER—BRONZE ENCLOSED (CAST IRON—OPTIONAL)
- SHAFT SLEEVE—STAINLESS STEEL TO FIT EITHER 5/8" OR 7/8" SHAFTS
- FASTENERS—STAINLESS STEEL
- SEALS—STANDARD VITON, OPTIONAL SEALS AVAILABLE (CONSULT FACTORY)
- OPTIONS: —ENGINE DRIVES
—PEDESTAL MODELS
—HYDRAULIC DRIVES
—CLUTCHPAKS

DIMENSIONS



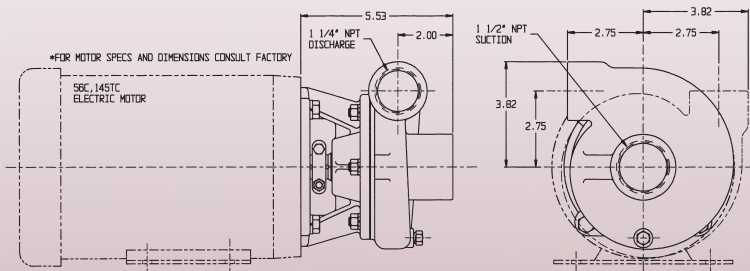
Pump Performance Curves



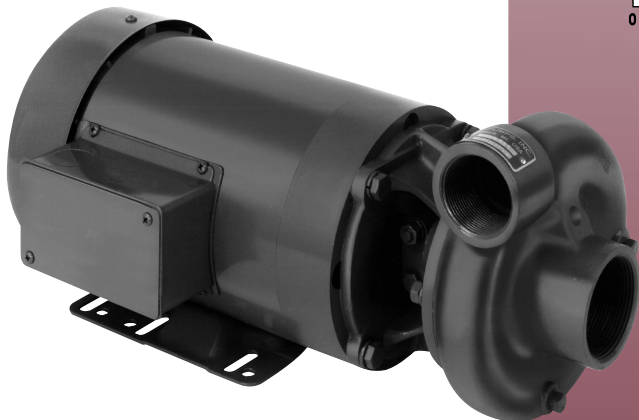
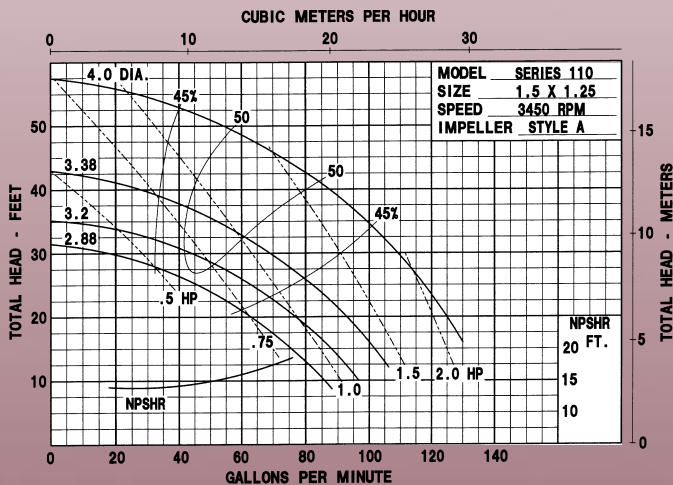
Features & Options

- 1 1/2" X 1 1/4" CENTRIFUGAL PUMP
- CLOSE COUPLED TO ELECTRIC MOTOR
- OR PUMPAK ONLY TO MOUNT TO STANDARD NEMA "C" FACE MOTOR
.75HP, 1HP, 1.5HP, 2HP
- FLOWS TO 130 GPM
- PRESSURES TO 60 FEET HEAD
- AVAILABLE IN: CAST IRON OR BRONZE CONSTRUCTION
- VERTICAL OR HORIZONTAL DISCHARGE
- WITH OR WITHOUT ELECTRIC MOTOR
- IMPELLER—CAST IRON OR BRONZE SEMI-OPEN
- SHAFT SLEEVE—STAINLESS STEEL TO FIT EITHER 5/8" OR 7/8" SHAFTS
- FASTENERS—STAINLESS STEEL
- SEALS—STANDARD VITON, OPTIONAL SEALS AVAILABLE (CONSULT FACTORY)
- OPTIONS: —PEDESTAL MODELS
—HYDRAULIC DRIVES
—CLUTCHPAKS

DIMENSIONS



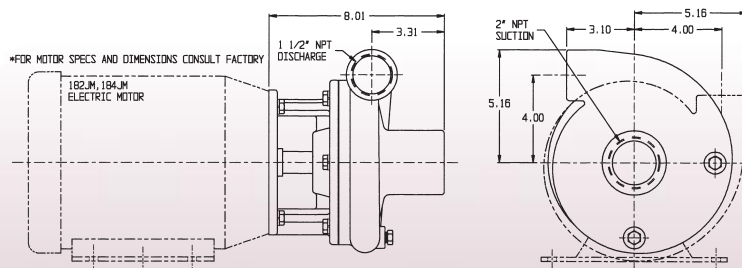
Pump Performance Curves



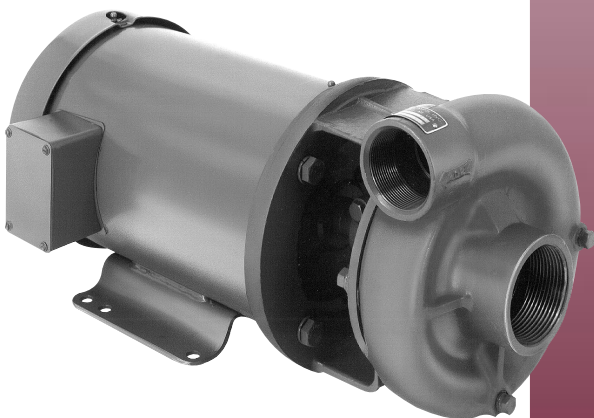
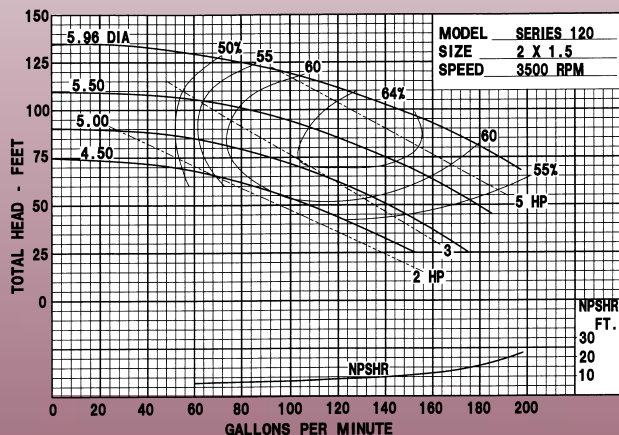
Features & Options

- 2" X 1½" CENTRIFUGAL PUMP
- CLOSE-COUPLED TO ELECTRIC MOTOR
- OR PUMPAK ONLY TO MOUNT TO STANDARD NEMA "C" PUMP MOTOR
3HP, 5HP, 7.5HP
- FLOWS TO 200 GPM
- PRESSURES TO 140 FEET HEAD
- AVAILABLE IN: CAST IRON OR BRONZE CONSTRUCTION
- VERTICAL OR HORIZONTAL DISCHARGE
- WITH OR WITHOUT ELECTRIC MOTOR
- IMPELLER—BRONZE—ENCLOSED—(CAST IRON OPTIONAL)
- FASTENERS—STAINLESS STEEL
- SEALS—STANDARD VITON, OPTIONAL SEALS AVAILABLE (CONSULT FACTORY)
- OPTIONS: —HYDRAULIC DRIVES
—CLUTCHPAKS

DIMENSIONS



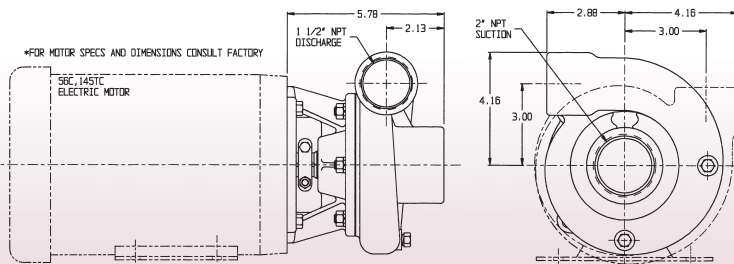
Pump Performance Curves



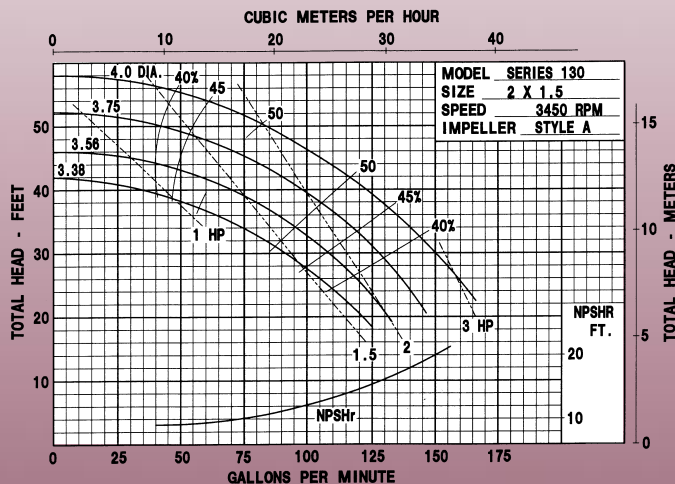
Features & Options

- 2" X 1 1/2" CENTRIFUGAL PUMP
- CLOSE COUPLED TO ELECTRIC MOTOR
- OR PUMPAK ONLY TO MOUNT TO STANDARD NEMA "C" FACE MOTOR
1.5HP, 2HP, 3HP
- FLOWS TO 160 GPM
- PRESSURES TO 60 FEET HEAD
- AVAILABLE IN: CAST IRON OR BRONZE CONSTRUCTION
- VERTICAL OR HORIZONTAL DISCHARGE
- WITH OR WITHOUT ELECTRIC MOTOR
- IMPELLER—CAST IRON OR BRONZE SEMI-OPEN
- SHAFT SLEEVE—STAINLESS STEEL TO FIT EITHER 5/8" OR 7/8" SHAFTS
- FASTENERS—ALL STAINLESS STEEL
- SEALS—STANDARD VITON, OPTIONAL SEALS AVAILABLE (CONSULT FACTORY)
- OPTIONS: —ENGINE DRIVES
—PEDESTAL MODELS
—HYDRAULIC DRIVES
—CLUTCHPAKS

DIMENSIONS



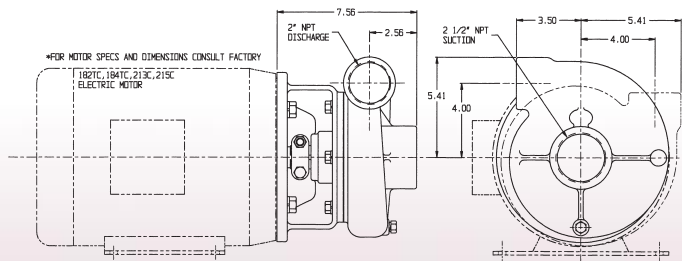
Pump Performance Curves



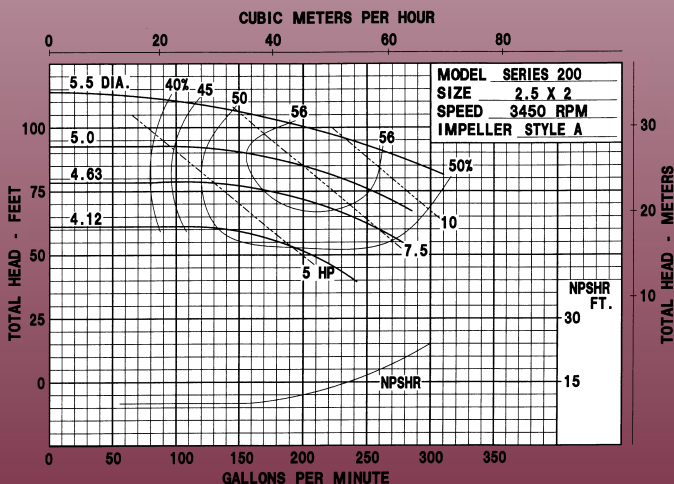
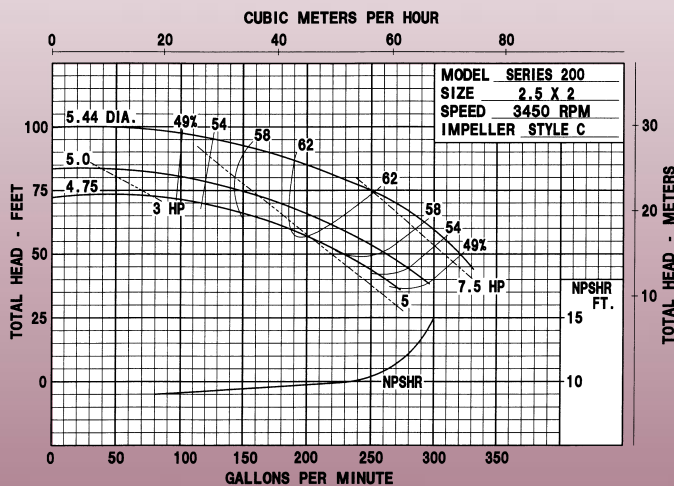
Features & Options

- 2 1/2" X 2" CENTRIFUGAL PUMP
- CLOSE COUPLED TO ELECTRIC MOTOR
- OR PUMPAK ONLY TO MOUNT TO STANDARD NEMA "C" FACE MOTOR 5HP, 7.5HP
- FLOWS TO 320 GPM
- PRESSURES TO 110 FEET HEAD
- AVAILABLE IN: CAST IRON OR BRONZE CONSTRUCTION
- VERTICAL OR HORIZONTAL DISCHARGE
- WITH OR WITHOUT ELECTRIC MOTOR
- IMPELLER—CAST IRON OR BRONZE SEMI-OPEN
- SHAFT SLEEVE—STAINLESS STEEL TO FIT 1 1/8" SHAFT
- SEALS—STANDARD VITON, OPTIONAL SEALS AVAILABLE (CONSULT FACTORY)
- OPTIONS: —PEDESTAL MODELS
—HYDRAULIC DRIVES
—CLUTCHPAKS

DIMENSIONS



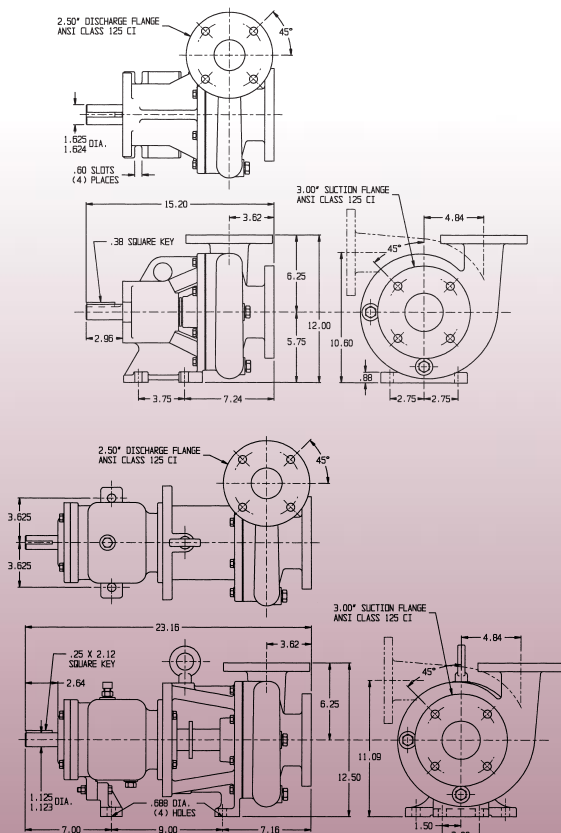
Pump Performance Curves



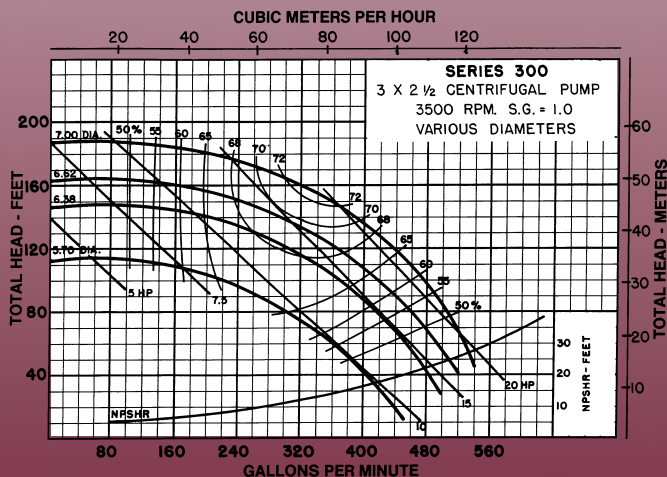
Features & Options

- 3" X 2 1/2" CENTRIFUGAL PUMP
- CLOSE COUPLED TO ELECTRIC MOTOR, PEDESTAL PUMP, OR FOOT MOUNTED FOR BELT OR DIRECT DRIVE
- NEMA JP PUMP MOTOR UP TO 25HP
- FLOWS TO 500 GPM
- PRESSURES TO 190 FEET HEAD
- AVAILABLE IN: CAST IRON AND CAST IRON STAINLESS STEEL FITTED
- IMPELLER—DUCTILE IRON—ENCLOSED
- FASTENERS—STAINLESS STEEL
- SEALS—STANDARD VITON, OPTIONAL SEALS AVAILABLE (CONSULT FACTORY)
- BEARINGS—HEAVY DUTY—OIL OR GREASE LUBRICATED
- SHAFT—STEEL
- SHAFT SLEEVE—316 STAINLESS STEEL
- OPTIONS: —HYDRAULIC DRIVES

DIMENSIONS



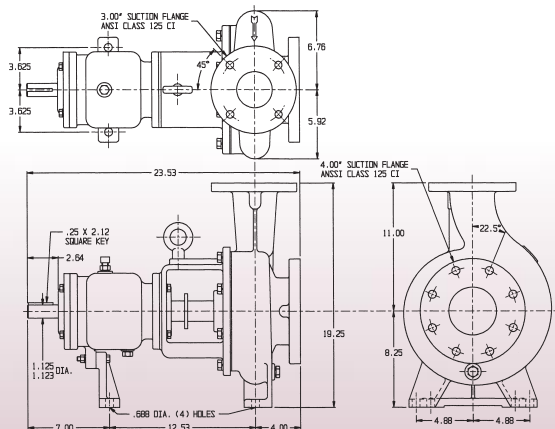
Pump Performance Curves



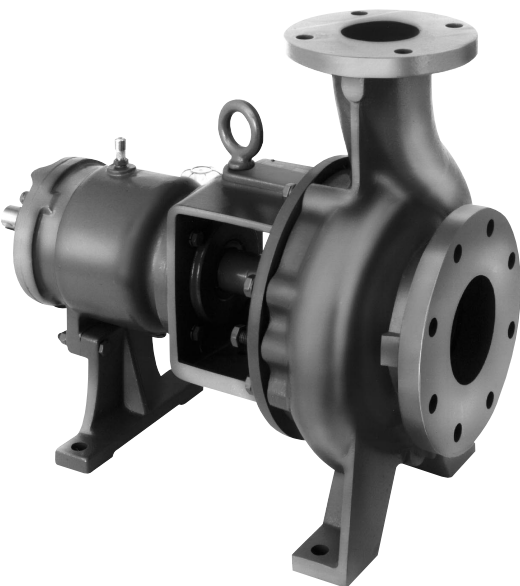
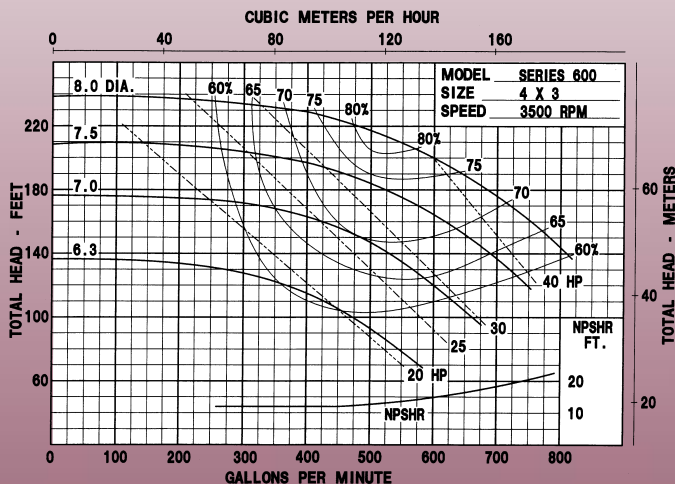
Features & Options

- 4" X 3" X 8" CENTRIFUGAL PUMP
- PEDESTAL ANSI A-70 PUMP FOR BELT OR DIRECT DRIVE
- FLOWS TO 800 GPM
- PRESSURES TO 240 FEET HEAD
- AVAILABLE IN: CAST IRON AND 316 STAINLESS STEEL
- STAINLESS STEEL FITTED (OPTIONAL)
- IMPELLER—C.I. 316 S.S.—ENCLOSED
- FASTENERS—STAINLESS STEEL
- SEALS—STANDARD VITON, OPTIONAL SEALS AVAILABLE (CONSULT FACTORY)
- BEARINGS—DOUBLE ROW—OIL LUBRICATED
- SHAFT—STEEL OR 316 STAINLESS STEEL

DIMENSIONS



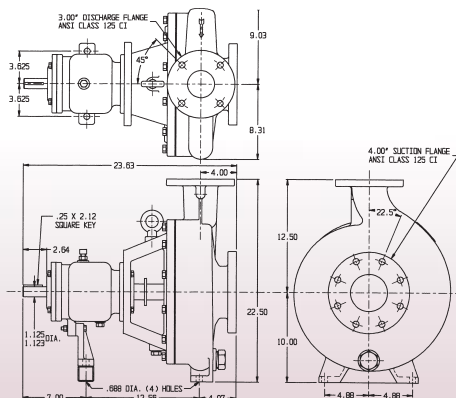
Pump Performance Curves



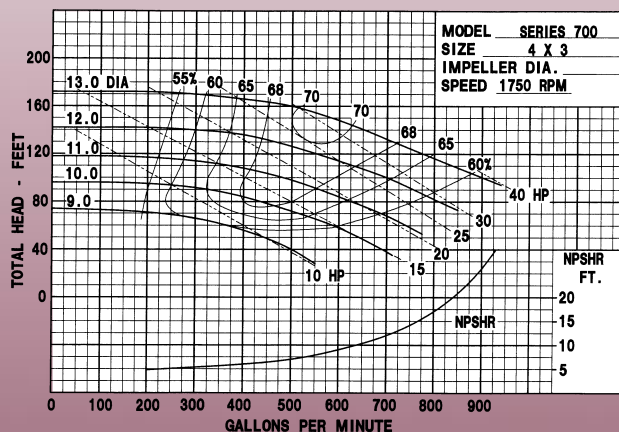
Features & Options

- 4" X 3" X 13" CENTRIFUGAL PUMP
- PEDESTAL ANSI A-40 PUMP FOR BELT OR DIRECT DRIVE
- FLOWS TO 800 GPM
- PRESSURES TO 170 FEET HEAD
- AVAILABLE IN: DUCTILE IRON CONSTRUCTION
- STAINLESS STEEL FITTED
- IMPELLER—DUCTILE IRON— ENCLOSED
- FASTENERS—STAINLESS STEEL
- SEALS—STANDARD VITON, OPTIONAL SEALS AVAILABLE (CONSULT FACTORY)
- BEARINGS—DOUBLE ROW—OIL LUBRICATED
- SHAFT—STEEL OR 316 STAINLESS STEEL
- SHAFT SLEEVE—STAINLESS STEEL

DIMENSIONS



Pump Performance Curves



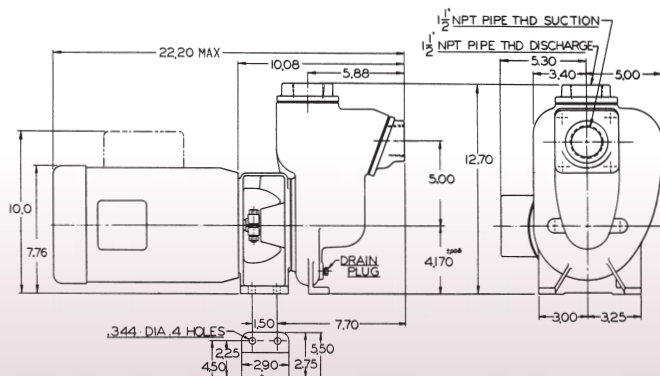
FLOMAX 5

SELF PRIMING CENTRIFUGAL PUMPS

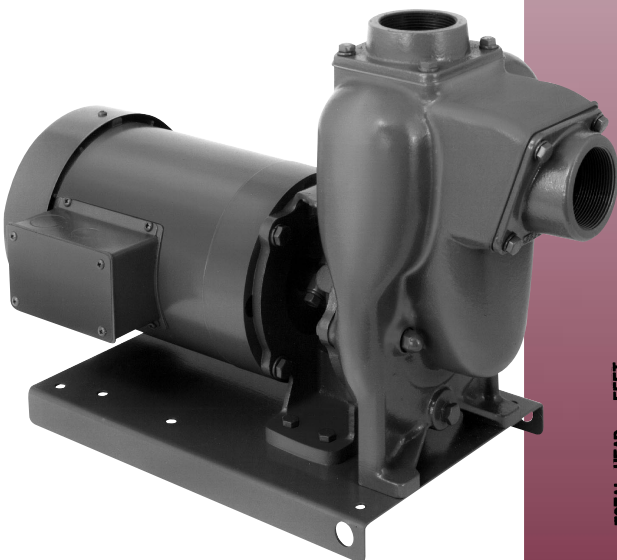
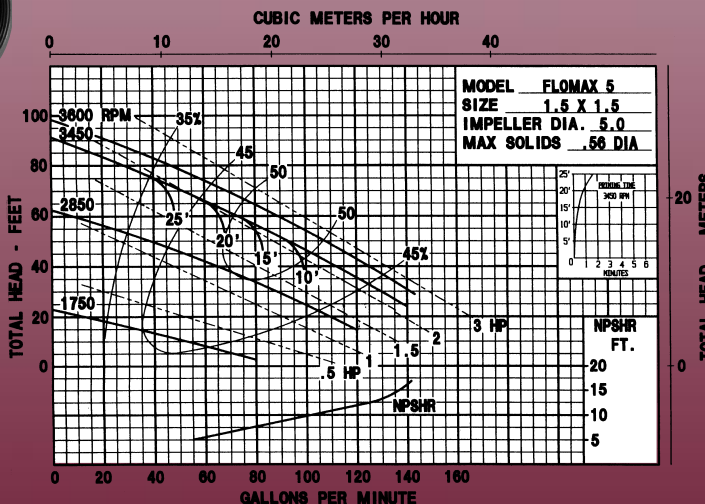
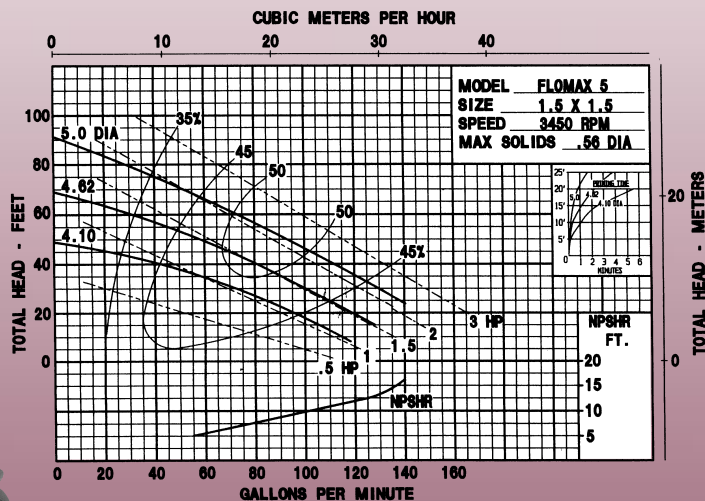
Features & Options

- 1½" X 1½" SELF PRIMING CENTRIFUGAL PUMP
- CLOSE COUPLED TO ELECTRIC MOTOR
- OR PUMPAK ONLY TO MOUNT TO STANDARD NEMA "C" FACE MOTOR 1.5HP, 2HP, 3HP
- FLOWS TO 100 GPM
- PRESSURES TO 100 FEET HEAD
- AVAILABLE IN: CAST IRON, BRONZE OR ALUMINUM CONSTRUCTION
- WITH OR WITHOUT ELECTRIC MOTOR
- IMPELLER—CAST IRON, BRONZE, ALUMINUM OR STAINLESS STEEL
- SHAFT SLEEVE—STAINLESS STEEL TO FIT EITHER 5/8" OR 7/8" SHAFTS
- FASTENERS—STAINLESS STEEL
- SEALS—STANDARD VITON, OPTIONAL SEALS AVAILABLE (CONSULT FACTORY)
- OPTIONS:—ENGINE DRIVES
—PEDESTAL MODELS
—HYDRAULIC DRIVES
—CLUTCHPAKS

DIMENSIONS



Pump Performance Curves



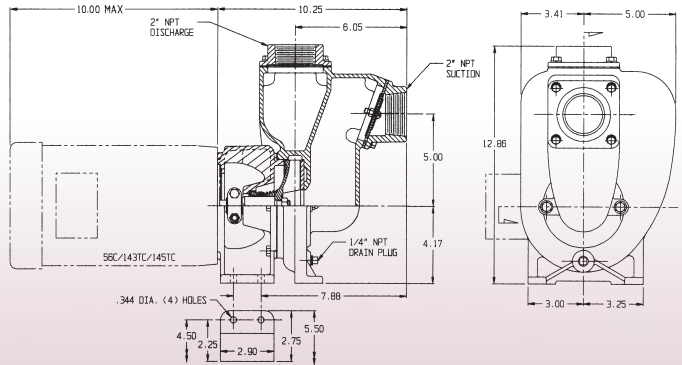
FLOMAX 8

SELF PRIMING CENTRIFUGAL PUMPS

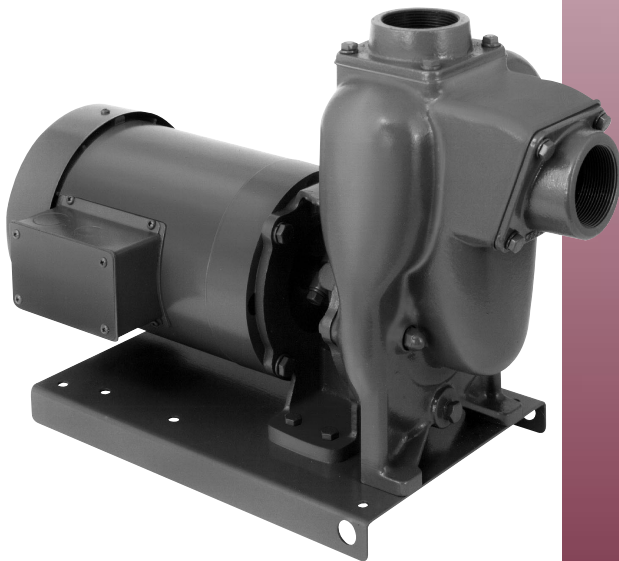
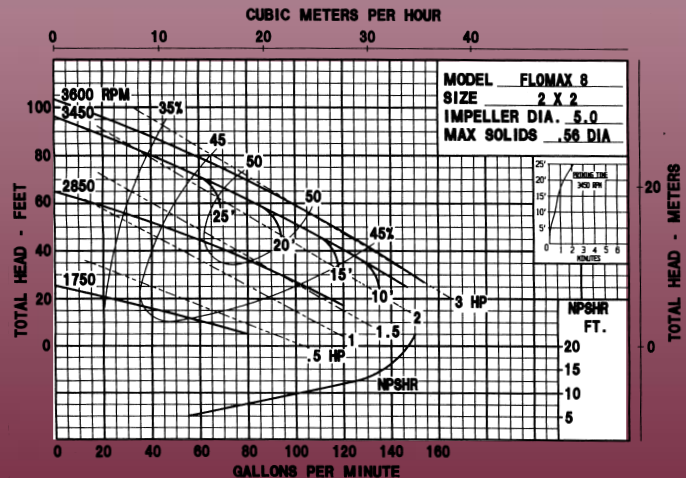
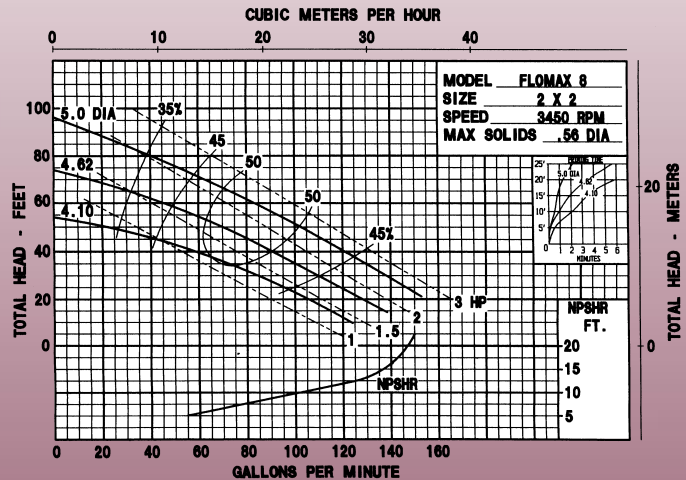
Features & Options

- 2" X 2" SELF PRIMING CENTRIFUGAL PUMP
- CLOSE COUPLED TO ELECTRIC MOTOR
- OR PUMPAK ONLY TO MOUNT TO STANDARD NEMA "C" FACE MOTOR 1.5HP, 2HP, 3HP
- FLOWS TO 140 GPM
- PRESSURES TO 100 FEET HEAD
- AVAILABLE IN: CAST IRON, BRONZE OR ALUMINUM CONSTRUCTION
- WITH OR WITHOUT ELECTRIC MOTOR
- IMPELLER—CAST IRON, BRONZE, ALUMINUM OR STAINLESS STEEL
- SHAFT SLEEVE—STAINLESS STEEL TO FIT EITHER $\frac{5}{8}$ " OR $\frac{7}{8}$ " SHAFTS
- FASTENERS—STAINLESS STEEL
- SEALS—STANDARD VITON, OPTIONAL SEALS AVAILABLE (CONSULT FACTORY)
- OPTIONS: —ENGINE DRIVES
—PEDESTAL MODELS
—HYDRAULIC DRIVES
—CLUTCHPAKS

DIMENSIONS



Pump Performance Curves



MP PUMPS, INC.
TECUMSEH PRODUCTS COMPANY
(800) 563-8006

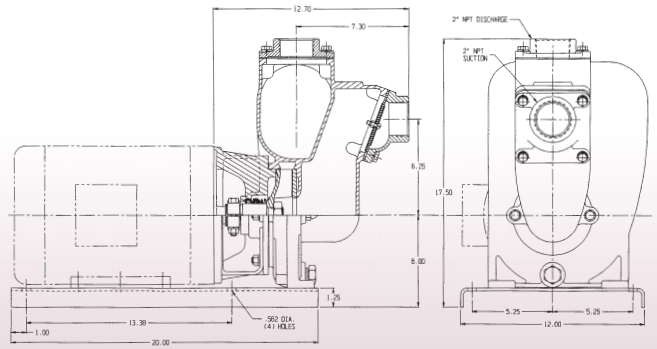
FLOMAX 10

SELF PRIMING CENTRIFUGAL PUMPS

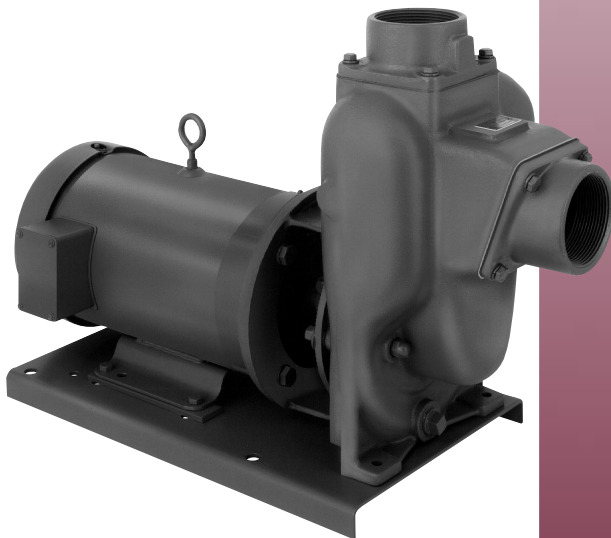
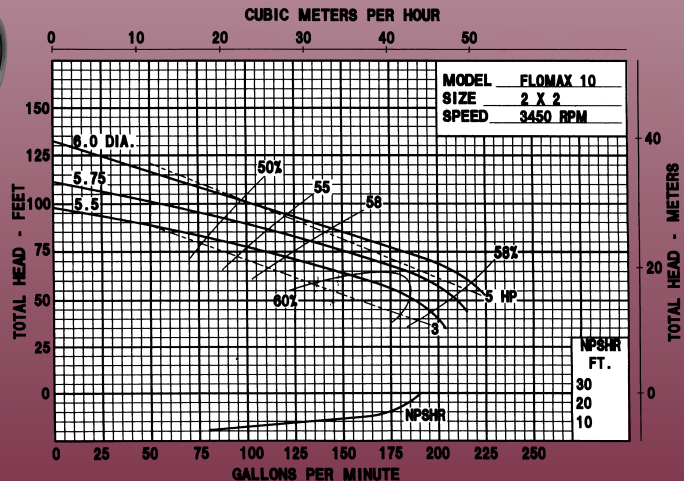
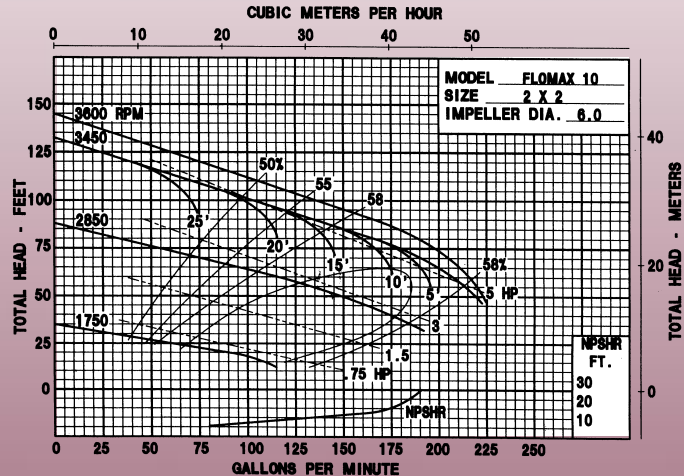
Features & Options

- 2" X 2" SELF PRIMING CENTRIFUGAL PUMP
- CLOSE COUPLED TO ELECTRIC MOTOR
- PUMPAK ONLY TO MOUNT TO STANDARD NEMA "C" FACE MOTOR 5HP, 7.5HP
- FLOWS TO 210 GPM
- PRESSURES TO 130 FEET HEAD
- AVAILABLE IN: CAST IRON, BRONZE OR ALUMINUM CONSTRUCTION
- WITH OR WITHOUT ELECTRIC MOTOR
- IMPELLER—CAST IRON, BRONZE, ALUMINUM OR STAINLESS STEEL
- SHAFT SLEEVE—STAINLESS STEEL
- FASTENERS—STAINLESS STEEL
- SEALS—STANDARD VITON, OPTIONAL SEALS AVAILABLE (CONSULT FACTORY)
- OPTIONS: —ENGINE DRIVES
—PEDESTAL MODELS
—HYDRAULIC DRIVES
—CLUTCHPAKS

DIMENSIONS



Pump Performance Curves



MP PUMPS, INC.
TECUMSEH PRODUCTS COMPANY

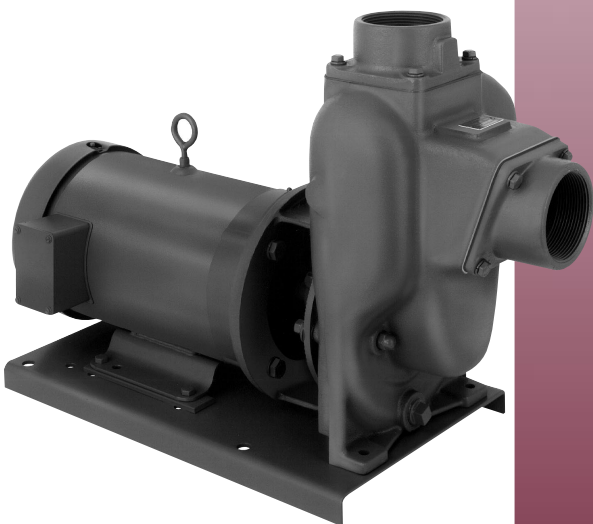
(800) 563-8006

FLOMAX 15

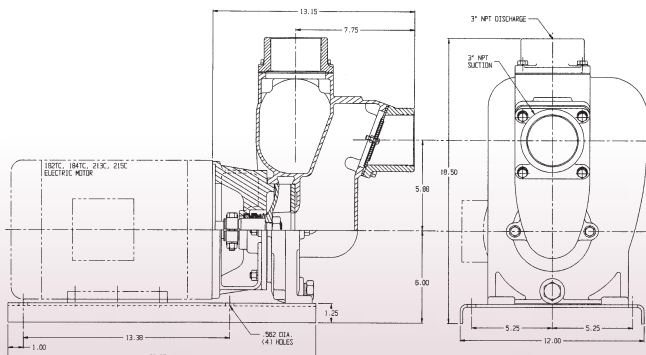
SELF PRIMING CENTRIFUGAL PUMPS

Features & Options

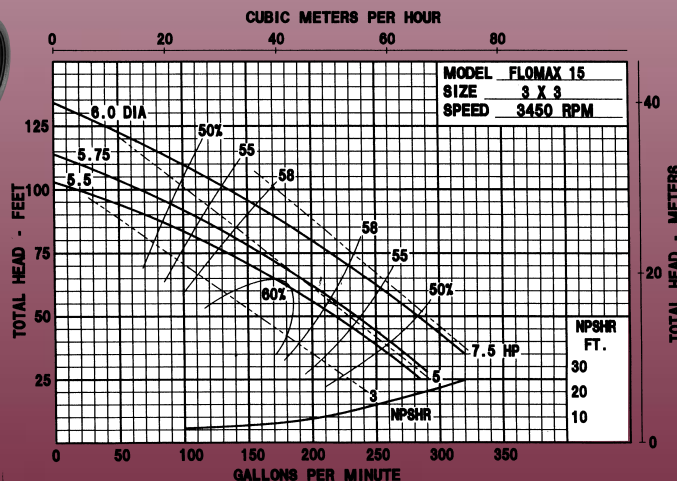
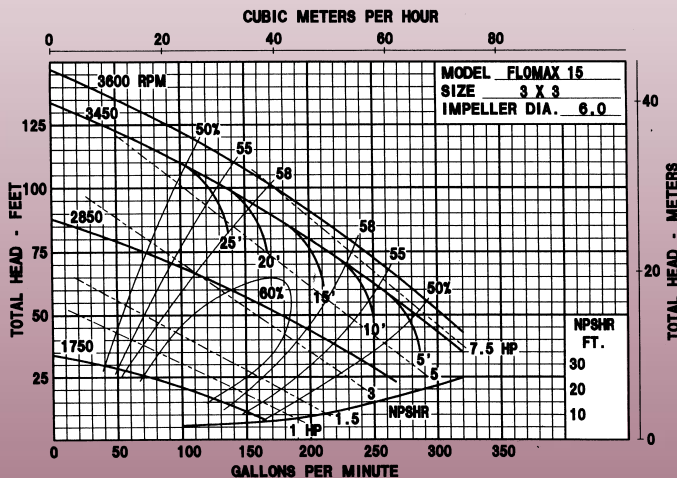
- 3" X 3" SELF PRIMING CENTRIFUGAL PUMP
- CLOSE-COUPLED TO ELECTRIC MOTOR
- OR PUMPAK ONLY TO MOUNT TO STANDARD NEMA "C" FACE MOTOR 5HP, 7.5HP
- FLOWS TO 300 GPM
- PRESSURES TO 125 FEET HEAD
- AVAILABLE IN: CAST IRON, BRONZE OR ALUMINUM CONSTRUCTION
- WITH OR WITHOUT ELECTRIC MOTOR
- IMPELLER—CAST IRON, BRONZE, ALUMINUM OR STAINLESS STEEL
- SHAFT SLEEVE—STAINLESS STEEL
- FASTENERS—ALL STAINLESS STEEL
- SEALS—STANDARD VITON, OPTIONAL SEALS AVAILABLE (CONSULT FACTORY)
- OPTIONS: —ENGINE DRIVES
—PEDESTAL MODELS
—HYDRAULIC DRIVES
—CLUTCHPAKS



DIMENSIONS



Pump Performance Curves



MP PUMPS, INC.
TECUMSEH PRODUCTS COMPANY
(800) 563-8006

3C1

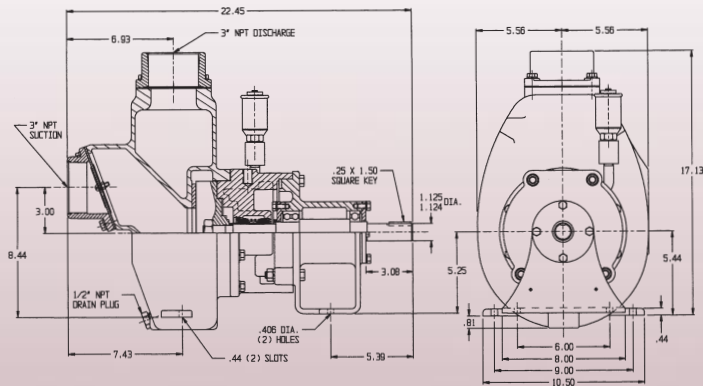
Features & Options

- 3" x 3" SELF PRIMING CENTRIFUGAL PUMP
- ELECTRIC MOTOR DRIVE
- CAST IRON CONSTRUCTION
- IMPELLER—CAST IRON 4 VANE SEMI OPEN NON-CLOG DESIGN
- SHAFT SLEEVE—304 STAINLESS STEEL
- SEALS—CARBON/CERAMIC DOUBLE MECHANICAL SEAL, GREASE LUBRICATED
- REPLACEABLE, STEEL WEAR PLATE
- STAINLESS STEEL CUTWATER
- REPLACEABLE FLANGES
- FLOWS TO 400 GPM
- PRESSURES TO 160 FEET HEAD
- BEARING PEDESTAL—CAST IRON WITH REGREASABLE BEARINGS
- OPTIONS: —ENGINE DRIVES
—PUMPAKS

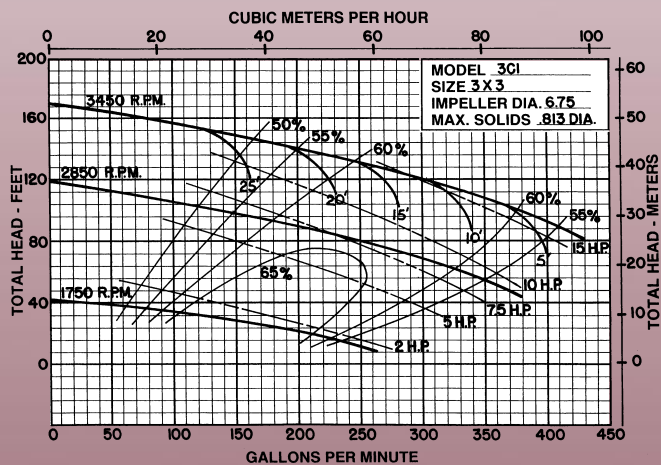


SELF PRIMING CENTRIFUGAL PUMPS

DIMENSIONS



Pump Performance Curves



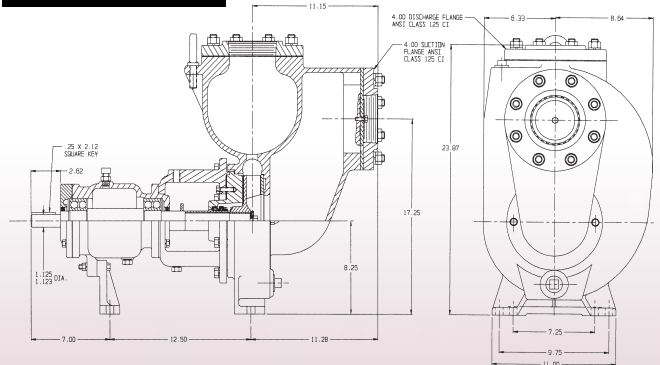
FLOMAX 40

SELF PRIMING CENTRIFUGAL PUMPS

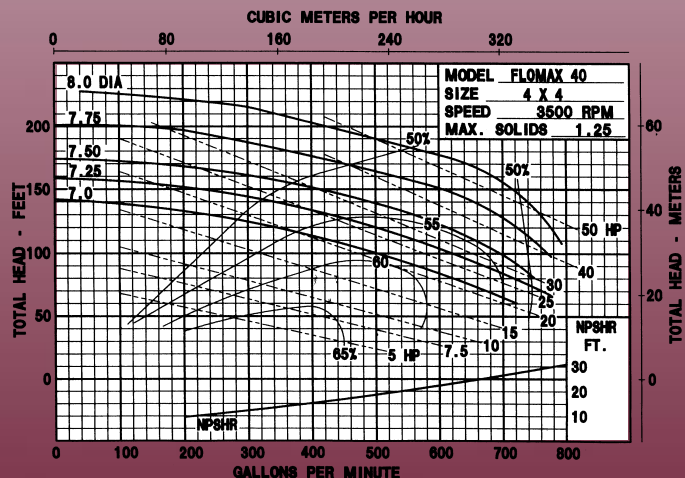
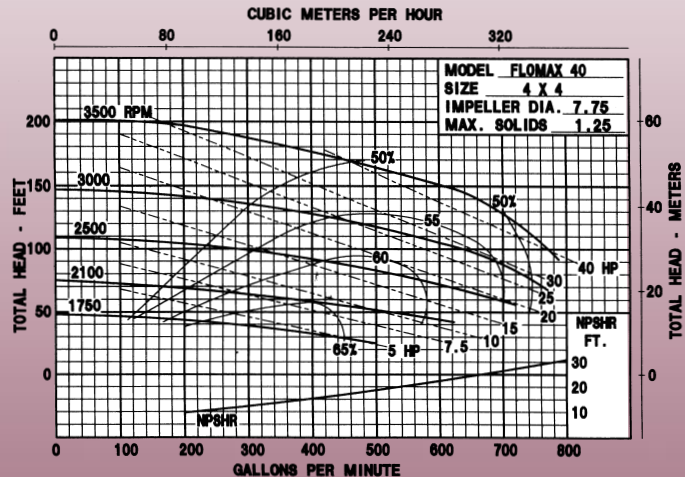
Features & Options

- 4" X 4" SELF PRIMING CENTRIFUGAL PUMP
- PEDESTAL PUMP FOR BELT OR DIRECT DRIVE
- CAST IRON CONSTRUCTION
- SEALED BEARINGS
- MECHANICAL SEAL
- 125 PSI FLANGES
- FLOWS TO 750 GPM
- PRESSURES TO 230 FEET HEAD
- WITH OR WITHOUT ELECTRIC MOTOR
- IMPELLER—CAST IRON (SEMI-OPEN)
- SHAFT SLEEVE—304 STAINLESS STEEL
- FASTENERS—STAINLESS STEEL
- SEALS—STANDARD VITON, OPTIONAL SEALS AVAILABLE (CONSULT FACTORY)
- OPTIONS: —STAINLESS STEEL IMPELLER
—STAINLESS STEEL WEARPLATE

DIMENSIONS



Pump Performance Curves



MP PUMPS, INC.
TECUMSEH PRODUCTS COMPANY
(800) 563-8006

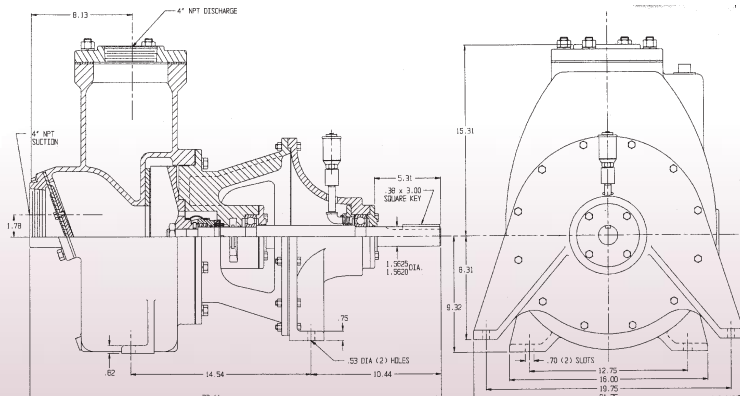
4L

SELF PRIMING CENTRIFUGAL PUMPS

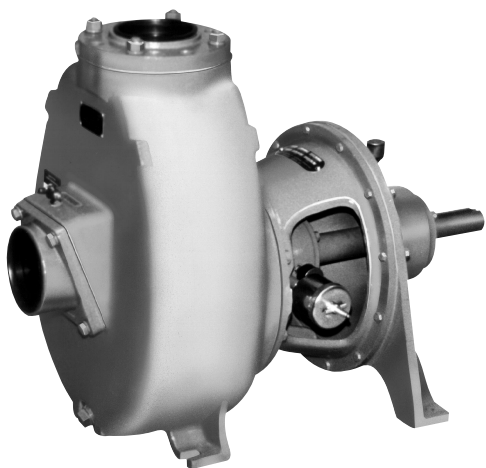
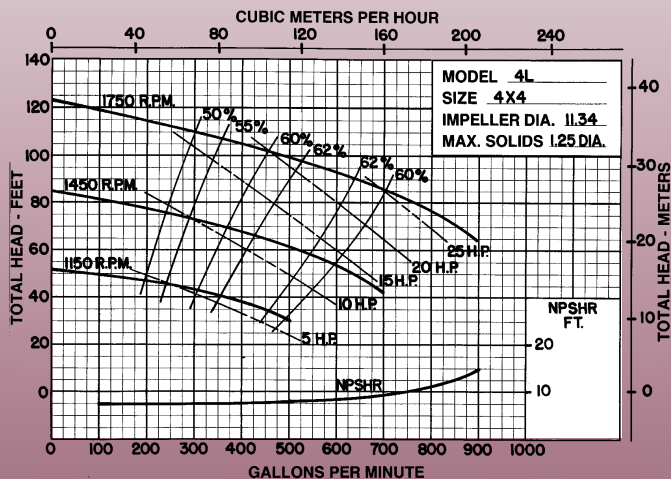
Features & Options

- 4" X 4" SELF PRIMING CENTRIFUGAL PUMP
- ELECTRIC MOTOR DRIVE
- STAINLESS STEEL CUTWATER
- FLOWS TO 800 GPM
- PRESSURES TO 120 FEET HEAD
- CAST IRON CONSTRUCTION
- REPLACEABLE FLANGES
- IMPELLER—DUCTILE IRON, 3 VANE SEMI-OPEN, NON-CLOG DESIGN. MAXIMUM 1 1/4" DIAMETER SOLIDS
- BEARING PEDESTAL—WITH REGREASABLE BALL BEARINGS
- PUMP SHAFT—HIGH STRENGTH PRECISION GROUND ALLOY STEEL
- SEALS—JAEGER "LUBRI-SEAL" MECHANICAL SEAL WITH HARDENED STAINLESS STEEL SEAT AGAINST BRONZE FACE (GREASE LUBRICATED)
- OPTIONS: —CARBON/CERAMIC SEALS
—TUNGSTEN CARBIDE SEALS
—ENGINE DRIVES

DIMENSIONS



Pump Performance Curves



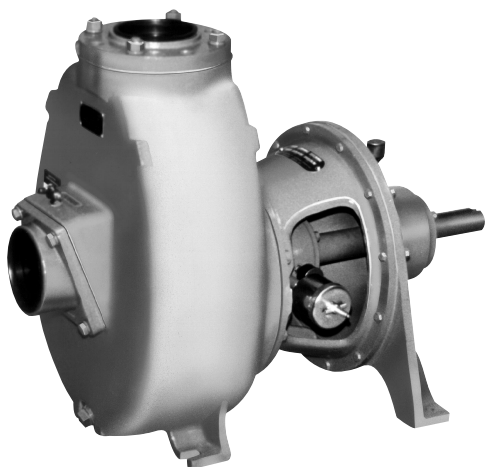
MP PUMPS, INC.
TECUMSEH PRODUCTS COMPANY
(800) 563-8006

6L

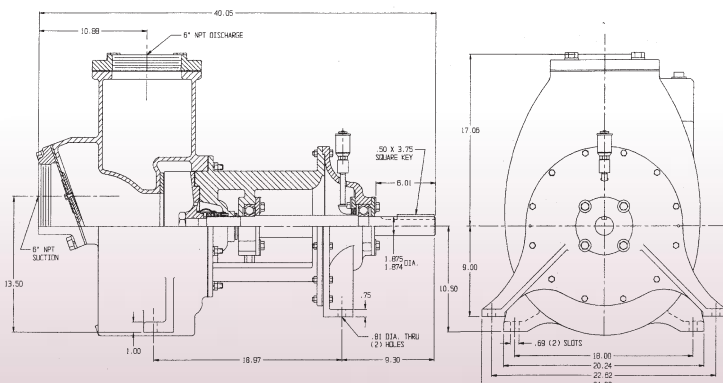
SELF PRIMING CENTRIFUGAL PUMPS

Features & Options

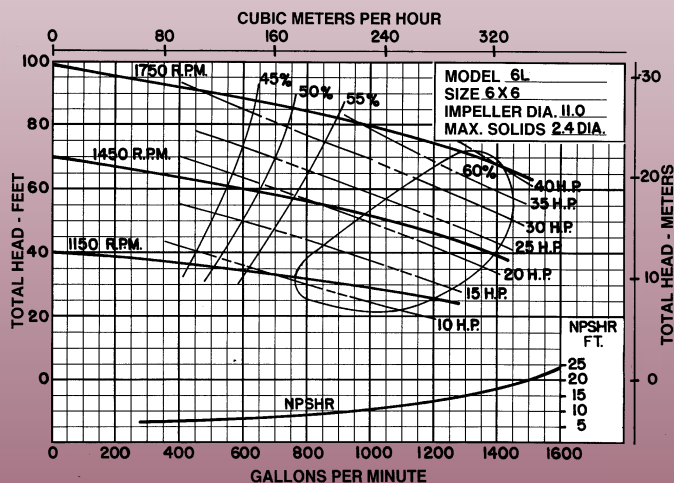
- 6" X 6" SELF PRIMING CENTRIFUGAL PUMP
- ELECTRIC MOTOR DRIVE
- STAINLESS STEEL CUTWATER
- FLOWS TO 1400 GPM
- PRESSURES TO 100 FEET HEAD
- CAST IRON CONSTRUCTION
- REPLACEABLE FLANGES
- IMPELLER—DUCTILE IRON, 3 VANE SEMI-OPEN NON-CLOG DESIGN MAXIMUM $2\frac{7}{16}$ " DIAMETER SOLIDS
- BEARING PEDESTAL—CAST IRON WITH REGREASABLE BALL BEARINGS
- PUMP SHAFT—HIGH STRENGTH PRECISION GROUND ALLOY STEEL
- SEALS—JAEGER "LUBRI-SEAL" MECHANICAL SEAL WITH HARDENED STAINLESS SEAT AGAINST BRONZE FACE (GREASE LUBRICATED)
- OPTIONS: —CARBON/CERAMIC SEALS
—TUNGSTEN CARBIDE SEALS
—ENGINE DRIVES



DIMENSIONS



Pump Performance Curves



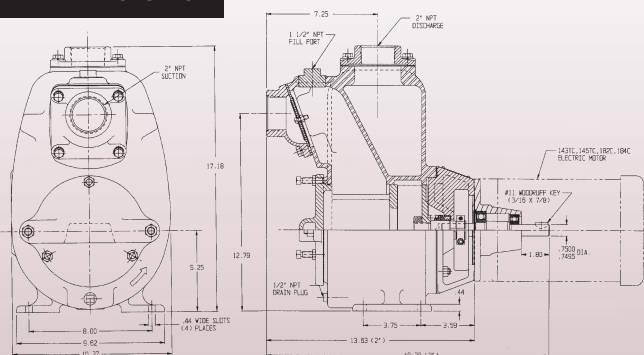
MP PUMPS, INC.
TECUMSEH PRODUCTS COMPANY
(800) 563-8006

SELF PRIMING TRASH PUMPS

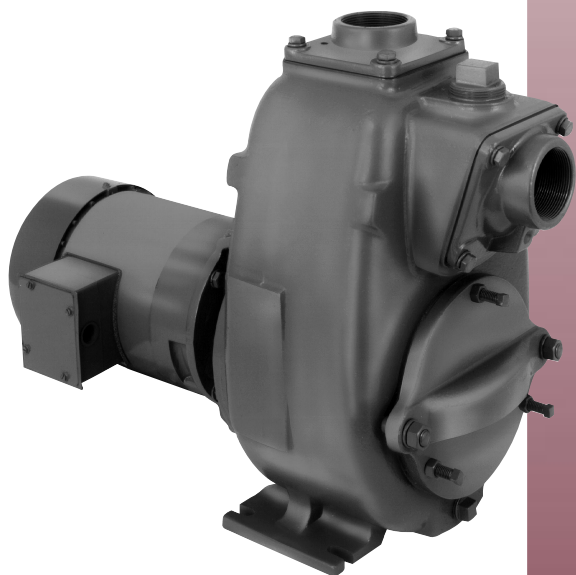
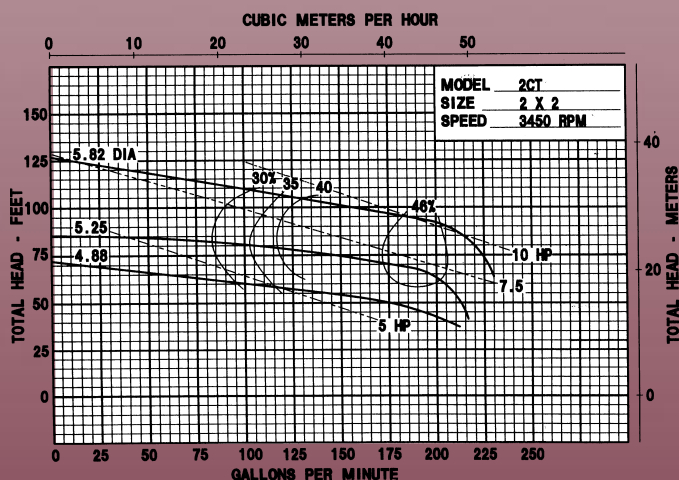
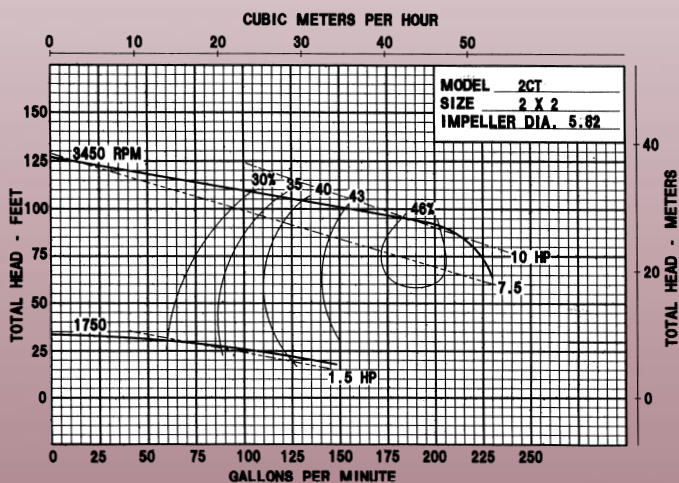
Features & Options

- 2" X 2" SELF PRIMING TRASH PUMP
- CLOSE COUPLED TO ELECTRIC MOTOR OR PEDESTAL FOR STANDARD MOTOR
- FLOWS TO 210 GPM
- PRESSURES TO 125 FEET HEAD
- CAST IRON CONSTRUCTION
- ELECTRIC MOTOR DRIVE
- IMPELLER—DUCTILE IRON
- SHAFT SLEEVE—304 STAINLESS STEEL
- FASTENERS—STAINLESS STEEL
- SEALS—CARBON/CERAMIC VITON MECHANICAL SEAL
- OPTIONS: —ENGINE DRIVES
—HYDRAULIC DRIVES

DIMENSIONS



Pump Performance Curves

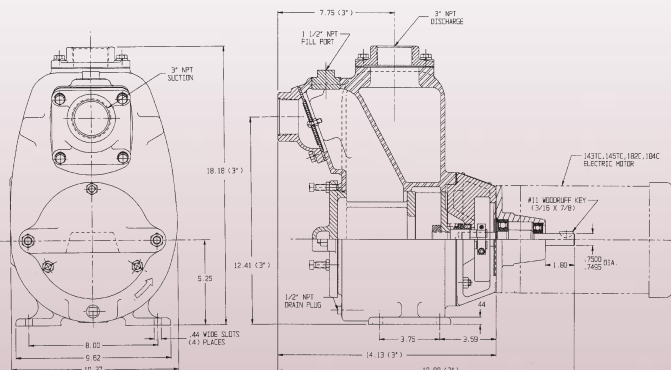


SELF PRIMING TRASH PUMPS

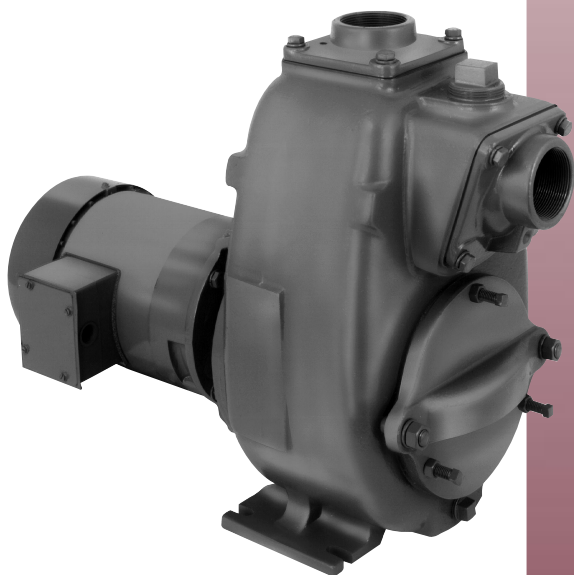
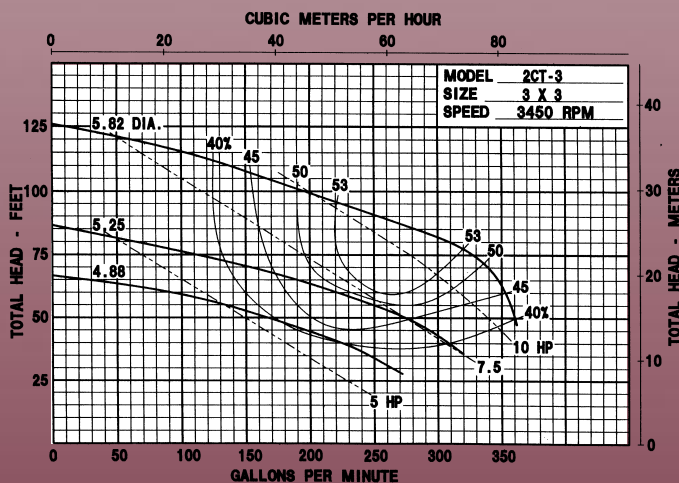
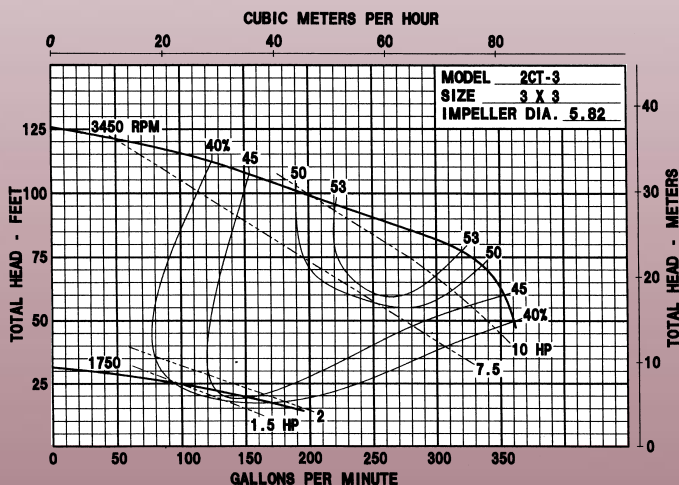
Features & Options

- 3" X 3" SELF PRIMING TRASH PUMP
- CLOSE COUPLED TO ELECTRIC MOTOR OR PEDESTAL FOR STANDARD MOTOR
- FLOWS TO 350 GPM
- PRESSURES TO 125 FEET HEAD
- CAST IRON CONSTRUCTION
- ELECTRIC MOTOR DRIVE
- IMPELLER—DUCTILE IRON
- SHAFT SLEEVE—304 STAINLESS STEEL
- FASTENERS—STAINLESS STEEL
- SEALS—CARBON/CERAMIC MECHANICAL SEAL, VITON
- OPTIONS: —ENGINE DRIVES
—HYDRAULIC DRIVES

DIMENSIONS



Pump Performance Curves



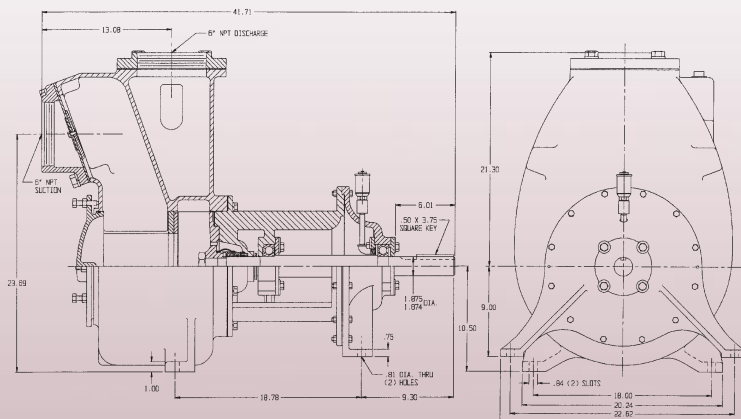
6LT

SELF PRIMING TRASH PUMPS

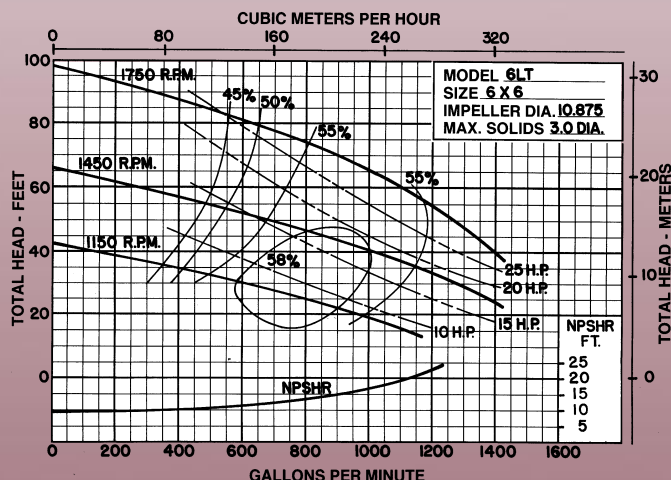
Features & Options

- 6" X 6" SELF PRIMING TRASH PUMP
- ELECTRIC MOTOR DRIVE
- STAINLESS STEEL CUTWATER
- FLOWS TO 1300 GPM
- PRESSURES TO 90 FEET HEAD
- CAST IRON CONSTRUCTION
- REPLACEABLE FLANGES
- IMPELLER—DUCTILE IRON, 2 VANE SEMI-OPEN NON-CLOG DESIGN
MAXIMUM 3" DIAMETER SOLIDS
- BEARING PEDESTAL—CAST IRON WITH REGREASABLE BEARINGS
- PUMP SHAFT—HIGH STRENGTH PRECISION GROUND ALLOY STEEL
- SEALS—JAEGER "LUBRI-SEAL" MECHANICAL SEAL WITH HARDENED STAINLESS STEEL SEAT AGAINST BRONZE FACE (GREASE LUBRICATED)
- OPTIONS: —CARBON/CERAMIC SEALS
—TUNGSTEN CARBIDE SEALS
—ENGINE DRIVES

DIMENSIONS



Pump Performance Curves



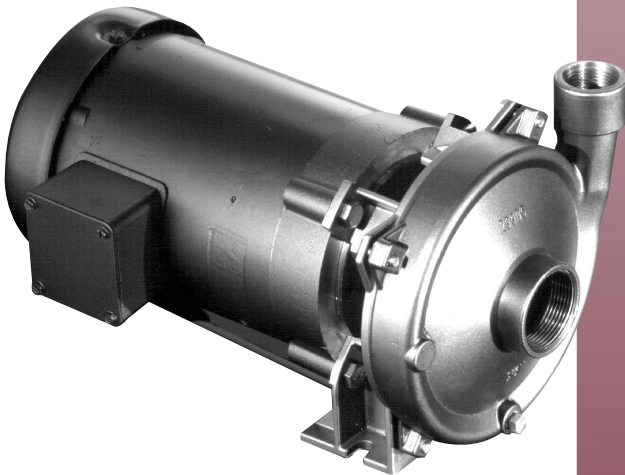
MP PUMPS, INC.
TECUMSEH PRODUCTS COMPANY
(800) 563-8006

CHEM FLO 1 & 2

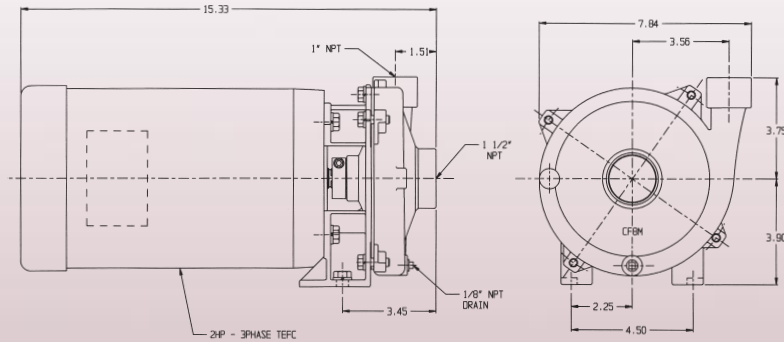
CENTRIFUGAL PUMPS

Features & Options

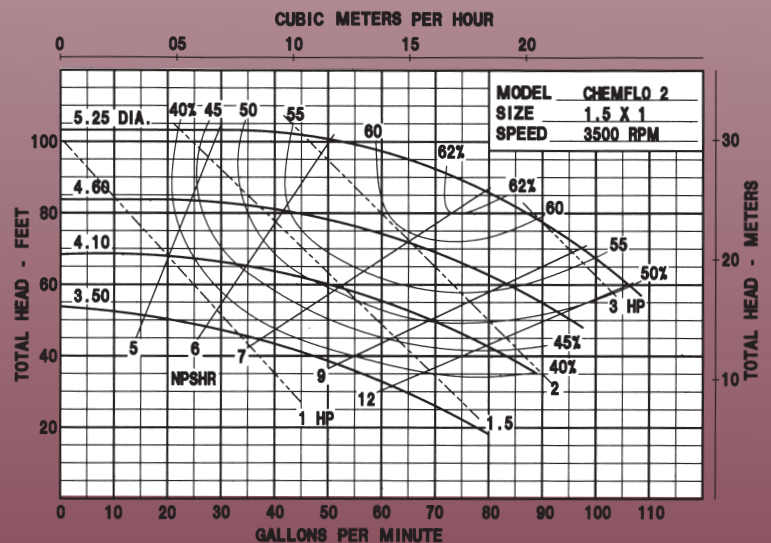
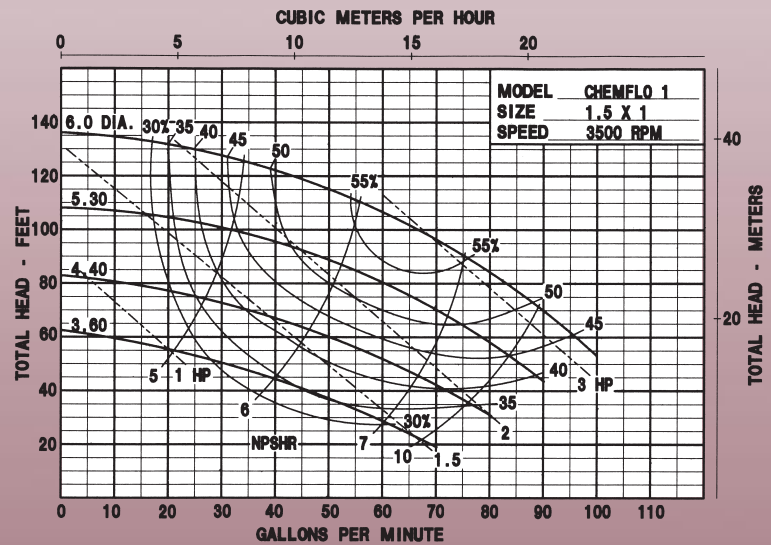
- INVESTMENT-CAST, 316 STAINLESS IS STRONGER THAN STAMPED/FORMED 304
Chem Flo withstands water hammer and pressure spikes, which can fracture conventional stainless pumps!
- 316 STAINLESS OFFERS MORE CORROSION RESISTANCE THAN 304, INCREASING SERVICE LIFE AND APPLICATION FLEXIBILITY, PLUS –
Chem Flo protects against extreme pH and temperature
- SIZE: 1 1/2" x 1"
- 1HP, 1.5HP, 2HP, 3HP
- FLOWS TO 100 GPM
- PRESSURES TO 140 FEET HEAD
- SEALS—VITON
- EXOTIC ELASTOMERS AVAILABLE
- PUMPAKS FOR 56C-FACE ELECTRIC MOTORS
- IMPELLER—316 STAINLESS STEEL SEMI-OPEN
- PEDESTAL VERSIONS AVAILABLE



DIMENSIONS



Pump Performance Curves



Features & Options

- INVESTMENT-CAST, 316 STAINLESS IS STRONGER THAN STAMPED/FORMED 304

Chem Flo withstands water hammer and pressure spikes, which can fracture conventional stainless pumps!

- 316 STAINLESS OFFERS MORE CORROSION RESISTANCE THAN 304, INCREASING SERVICE LIFE AND APPLICATION FLEXIBILITY, PLUS -

Chem Flo protects against extreme pH and temperature

- SIZE: 2" x 1 1/2"
- 1HP, 1.5HP, 2HP, 3HP
- FLOWS TO 180 GPM

- PRESSURES TO 105 FEET HEAD

- SEALS—VITON

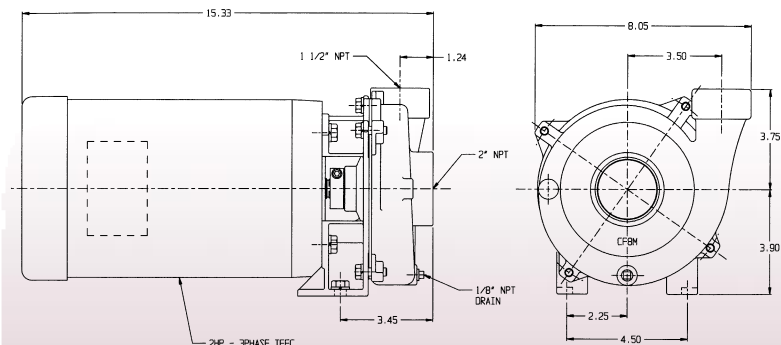
- EXOTIC ELASTOMERS AVAILABLE

- PUMPAKS FOR 56C-FACE ELECTRIC MOTORS

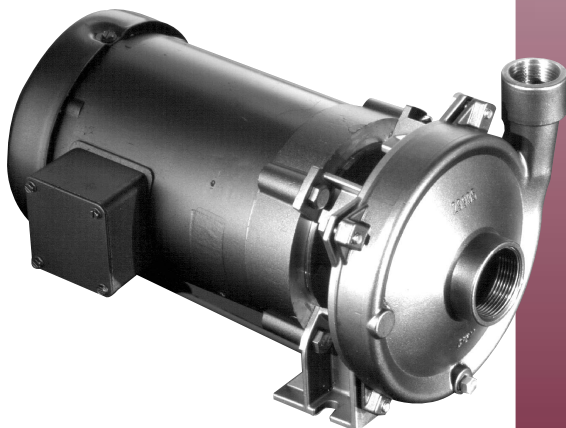
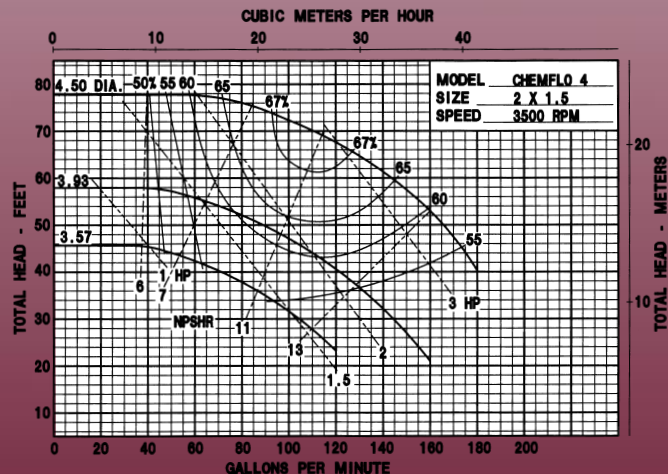
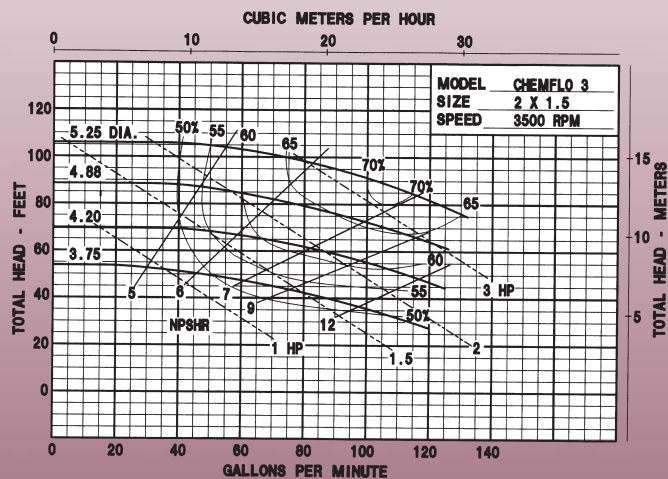
- IMPELLER—316 STAINLESS STEEL SEMI-OPEN

- PEDESTAL VERSIONS AVAILABLE

DIMENSIONS



Pump Performance Curves



Features & Options

FOR APPLICATIONS IN THE PLASTICS, CHEMICAL, FOOD, AND PROCESSING INDUSTRIES WHICH REQUIRE PUMPING OF HIGH TEMPERATURE FLUIDS.

THE HTO 80 UTILIZES AN ISOLATED SEAL CHAMBER, EFFECTIVELY COOLED BY A FAN CLAMP, WHICH COUPLES THE UNIT TO THE SHAFT OF A STANDARD 56C FRAME MOTOR.

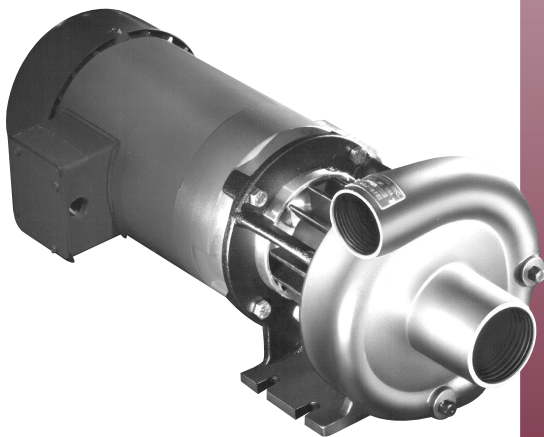
- STANDARD CARBON/CERAMIC MECHANICAL SEAL WITH VITON ELASTOMERS, STAINLESS STEEL FITTED
- CARBON GRAPHITE ISOLATOR BUSHING SEPARATES MECHANICAL SEAL FROM HIGH TEMPERATURE FLUIDS
- STAINLESS STEEL DRIVE SLEEVE AND ALUMINUM DRIVE CLAMP COUPLES PUMP UNIT TO MOTOR

- VERTICAL OR HORIZONTAL DISCHARGE

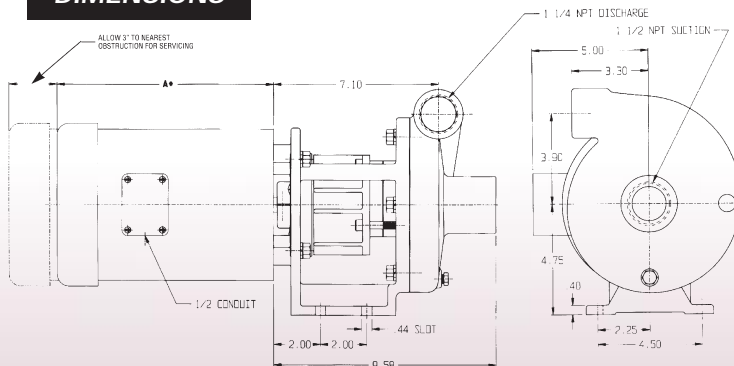
- WITH OR WITHOUT ELECTRIC MOTOR

THE HTO 80 IS A UNIQUE CENTRIFUGAL PUMP (PATENTED) DESIGNED FOR HIGH TEMPERATURE APPLICATIONS WITHOUT REQUIRING EXTERNAL FLUSHES OR JACKET COOLING.

- CAPACITIES TO 85 GPM
- HEADS TO 140 FT. TDH.
- TEMPERATURES TO 650°F



DIMENSIONS

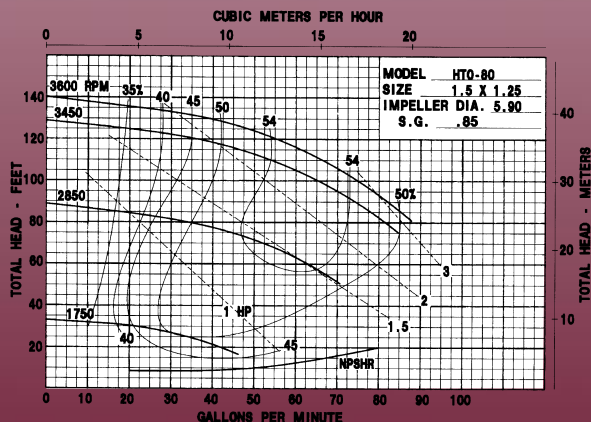
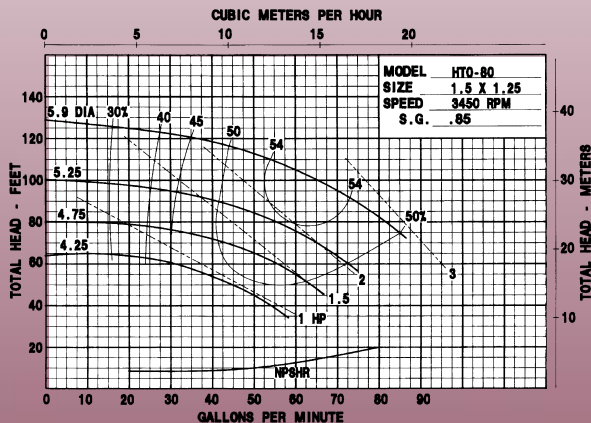


3 PHASE TYPICAL TEFC ROUND BODY MOTOR

| FRAME | HP | PH | "A" DIM TEFC |
|-------|-----|----|--------------|
| 56C | 1 | 3 | 9.31 |
| 56C | 1.5 | 3 | 9.94 |
| 56C | 2 | 3 | 11.25 |
| 56C | 3 | 3 | 12.12 |

Pump dimensions certifiable for construction purposes. Motor dimensions dependent upon motor manufacturer.

Pump Performance Curves



Horsepower requirements based upon 0.85 specific gravity. Calculations can be applied for fluids of other specific gravities.

Maximum operating temperature is 650°F.
Maximum working pressure is 150 PSI.



MP PUMPS, INC.
TECUMSEH PRODUCTS COMPANY
(800) 563-8006

Features & Options

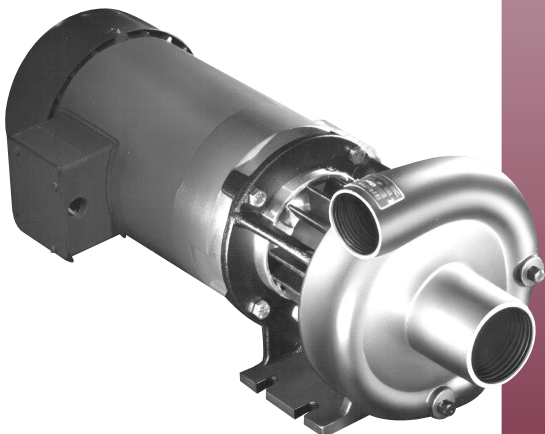
**FOR APPLICATIONS IN THE PLASTICS,
CHEMICAL, FOOD, AND PROCESSING
INDUSTRIES WHICH REQUIRE PUMPING OF
HIGH TEMPERATURE FLUIDS.**

THE HTO 120 UTILIZES AN ISOLATED SEAL CHAMBER EFFECTIVELY COOLED BY A FAN CLAMP, WHICH COUPLES THE UNIT TO THE SHAFT OF A STANDARD 145TC AND 184C FRAME MOTOR.

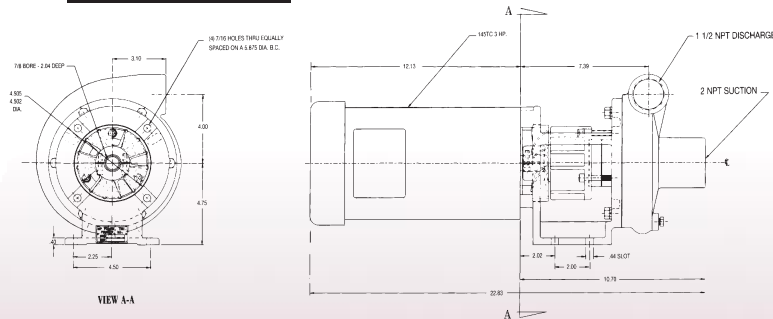
- STANDARD CARBON/CERAMIC MECHANICAL SEAL WITH VITON ELASTOMERS, STAINLESS STEEL FITTED
- CARBON GRAPHITE ISOLATOR BUSHING SEPARATES MECHANICAL SEAL FROM HIGH TEMPERATURE FLUIDS
- STAINLESS STEEL DRIVE SLEEVE AND ALUMINUM DRIVE CLAMP COUPLES PUMP UNIT TO MOTOR
- VERTICAL OR HORIZONTAL DISCHARGE
- WITH OR WITHOUT ELECTRIC MOTOR

THE HTO 120 IS A UNIQUE CENTRIFUGAL PUMP (PATENTED) DESIGNED FOR HIGH TEMPERATURE APPLICATIONS WITHOUT REQUIRING EXTERNAL FLUSHES OR JACKET COOLING.

- CAPACITIES TO 200 GPM
- HEADS TO 135 FT. TDHT.
- TEMPERATURES TO 650°F

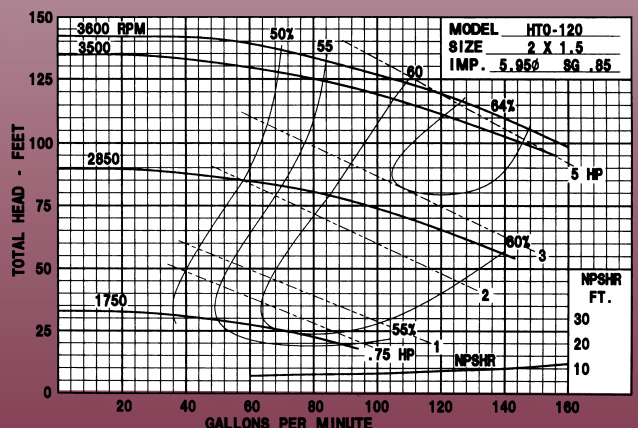
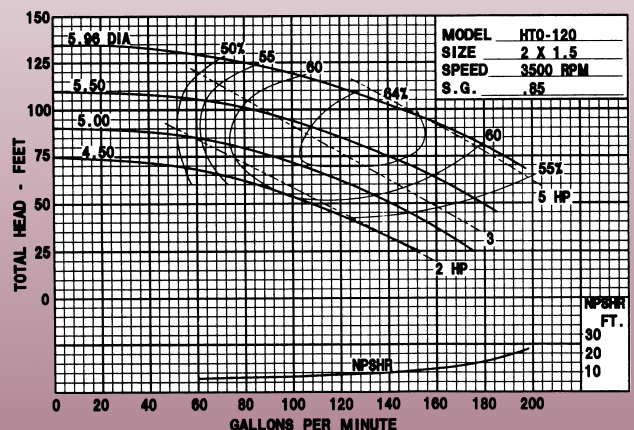


DIMENSIONS



Pump dimensions certifiable for construction purposes.
Motor dimensions dependent upon motor manufacturer.

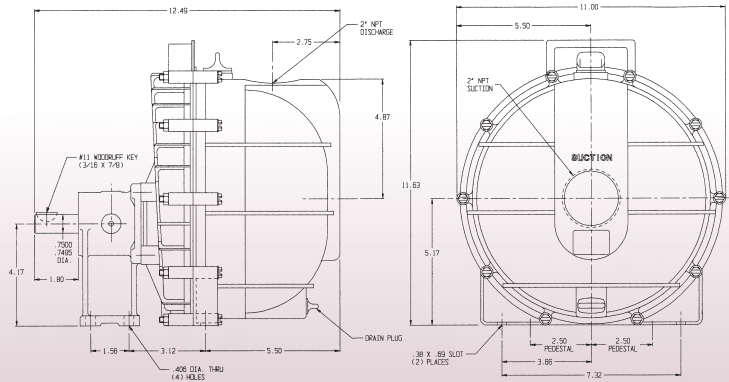
Pump Performance Curves



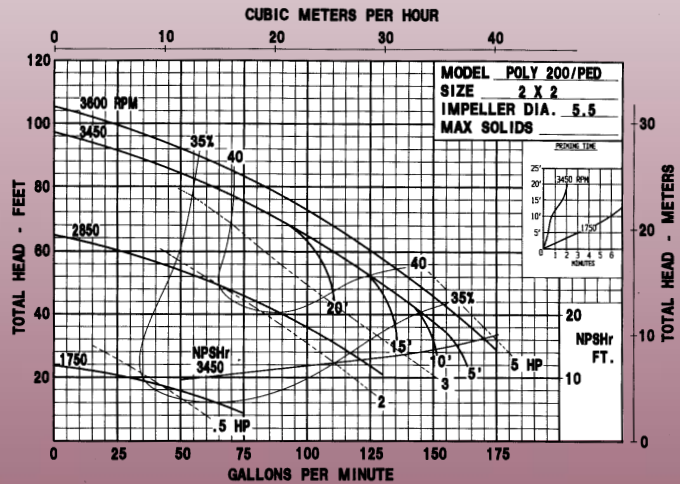
Features & Options

- 2" X 2" SELF PRIMING CENTRIFUGAL PUMP
- PEDESTAL FOR STANDARD MOTOR
- FLOWS TO 150 GPM
- PRESSURES TO 100 FEET HEAD
- ALL POLYPROPYLENE CONSTRUCTION
- SELF PRIMING TO 20 FT.
- SEALS & ELASTOMERS—EPDM
- OPTIONS: —ENGINE DRIVES
—HYDRAULIC DRIVES

DIMENSIONS



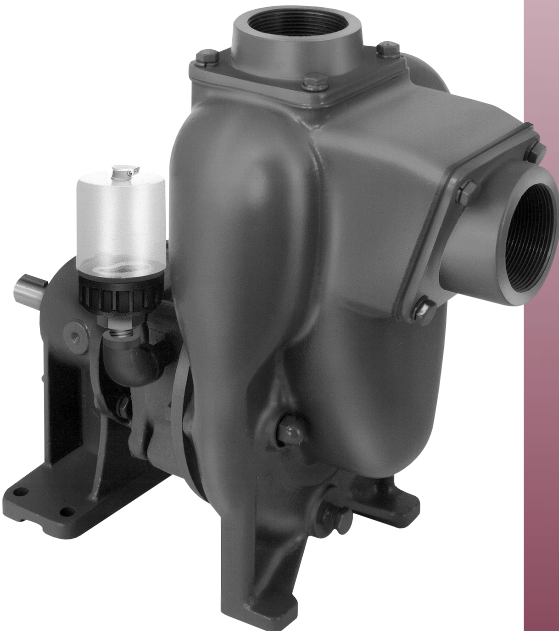
Pump Performance Curves



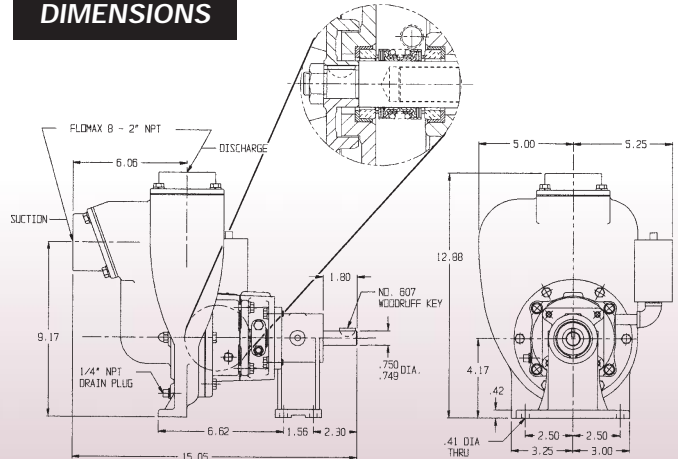
SELF PRIMING CENTRIFUGAL PUMPS

Features & Options

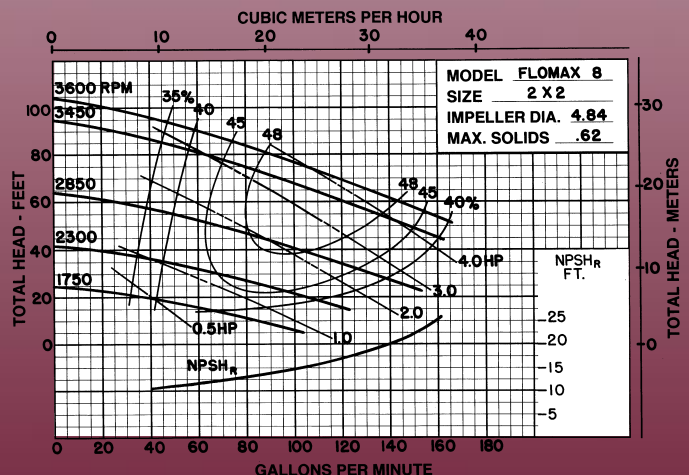
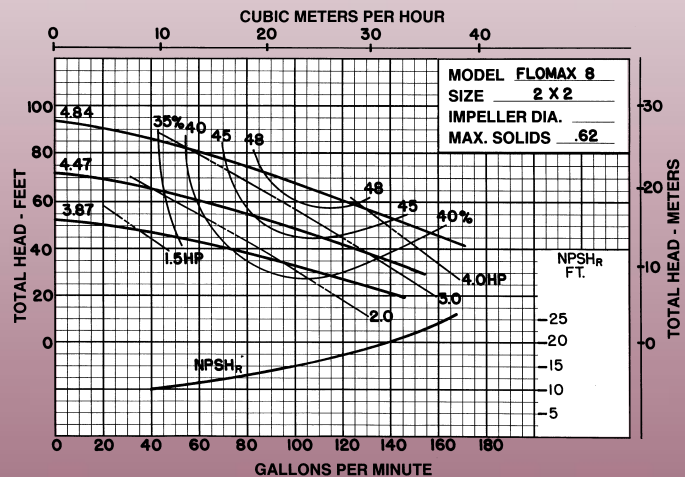
- 1 1/2" OR 2" DOUBLE SEAL
SELF PRIMING CENTRIFUGAL PUMPS
- "C" FACE ELECTRIC MOTOR DRIVE
- PUMPAKS
- FLOWS TO 160 GPM
- PRESSURES TO 95 FEET HEAD
- RUNS DRY WITHOUT DAMAGE
- CAST IRON CONSTRUCTION FOR "C"
FACE MOTOR
- SHAFT SLEEVE—316 STAINLESS STEEL
- FASTENERS—STAINLESS STEEL
- SEALS—DOUBLE MECHANICAL WITH
BARRIER FLUID CHAMBER
- OPTIONS: —ENGINE DRIVES
—PEDESTAL MODELS
—HYDRAULIC DRIVES
—CLUTCHPAKS



DIMENSIONS



Pump Performance Curves

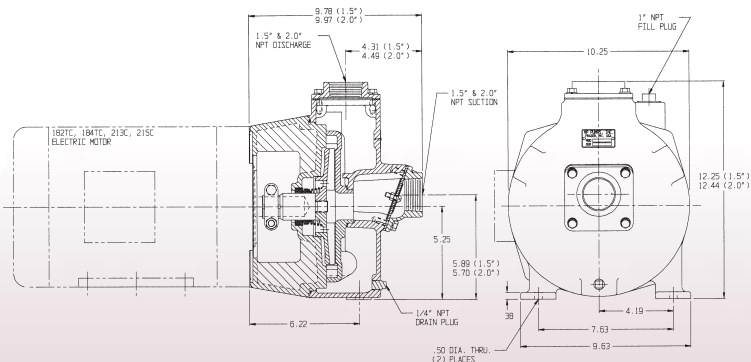


Features & Options

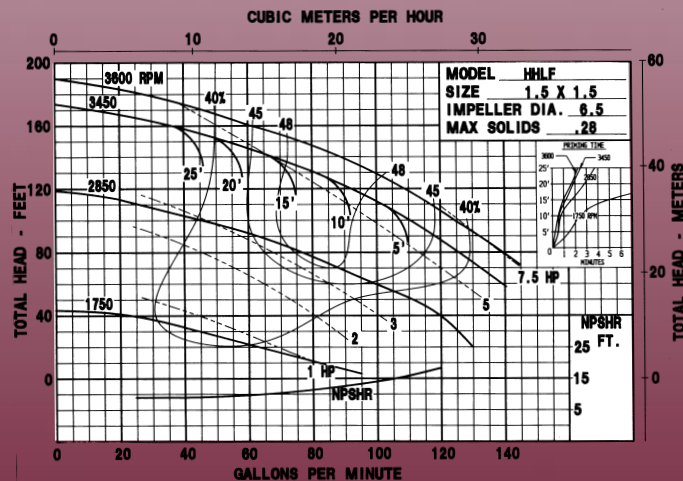
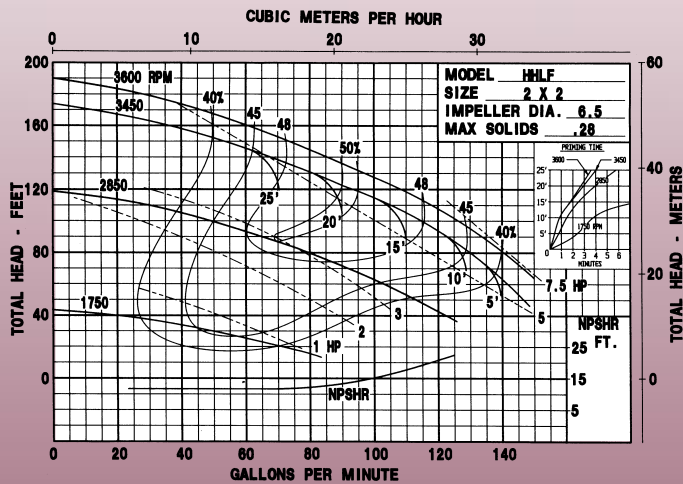
- 1½" X 1½" OR 2" X 2" HIGH HEAD SELF PRIMING CENTRIFUGAL PUMPS
- PUMPAK
- "C" FACE ELECTRIC MOTOR DRIVE 5HP, 7.5HP
- PEDESTAL DRIVE
- FLOWS TO 140 GPM
- PRESSURES TO 190 TDH
- CAST IRON OR BRONZE CONSTRUCTION
- DRIVE SLEEVE—304 STAINLESS STEEL
- FASTENERS—STAINLESS STEEL
- SEALS—STANDARD CARBON, CERAMIC, STAINLESS STEEL AND VITON WITH OTHER OPTIONS AVAILABLE (CONSULT FACTORY)



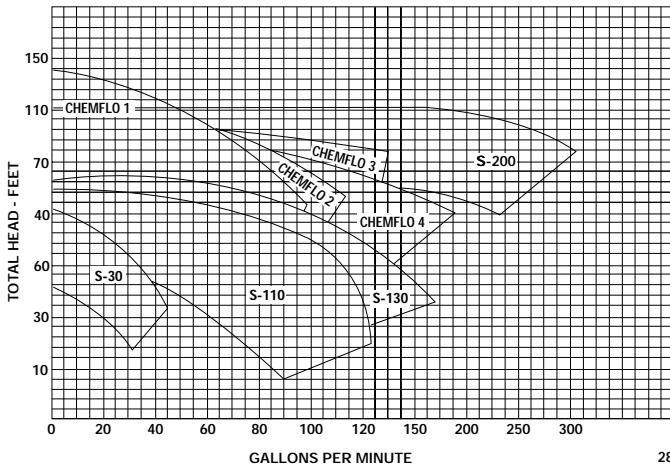
DIMENSIONS



Pump Performance Curves



PUMP SELECTION GUIDE

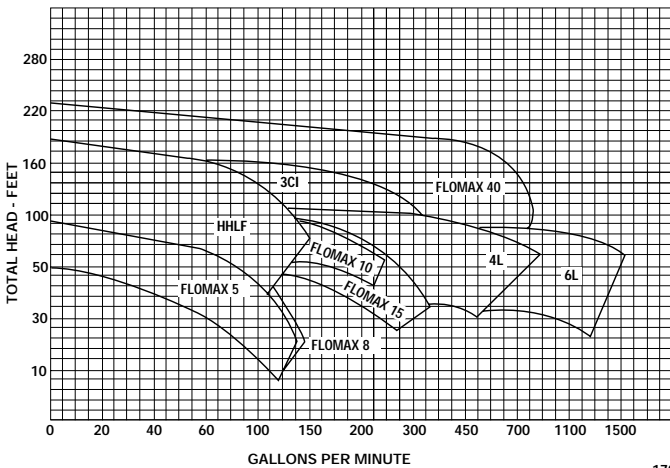
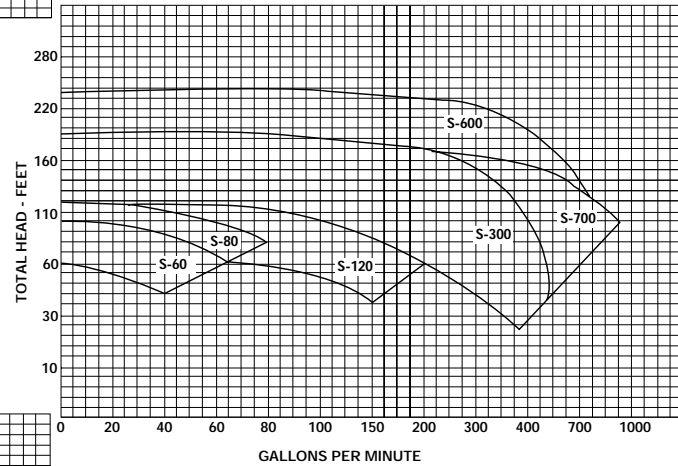


OPEN IMPELLER

CHEMFLO 1
CHEMFLO 2
CHEMFLO 3
CHEMFLO 4
S-30
S-110
S-130
S-200

ENCLOSED IMPELLER

S-60
S-600
S-700
S-300
S-80
S-120

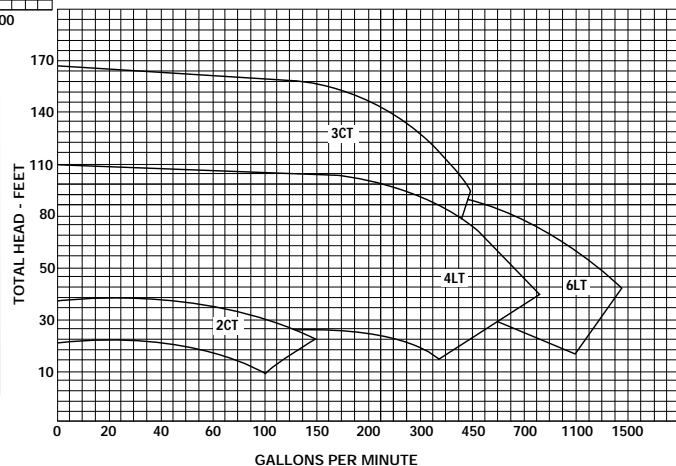


SELF PRIMING

FLOMAX 5
FLOMAX 8
FLOMAX 10
FLOMAX 15
FLOMAX 40
4L
6L
3CI
HHLF

TRASH

2CT
3CT
4LT
6LT



MP PUMPS, INC. LIMITED WARRANTY FOR NEW PUMPS MANUFACTURED BY MP PUMPS

A. PRODUCTS WARRANTED

MP PUMPS, Inc., a Michigan Company ("MP PUMPS") subject to the limitations contained below, will at its option, repair or replace, without charge for parts or labor only, any part of a new pump manufactured by MP PUMPS (an "MP Pump") which is found, upon examination by MP PUMPS' factory in Fraser, Michigan, to be DEFECTIVE IN MATERIAL AND/OR WORKMANSHIP if received by such factory for such examination within six months from the date of sale to the original consumer purchaser.

B. PRODUCTS AND ITEMS NOT WARRANTED

1. Alterations or Modifications of MP Pump
All obligations under this warranty shall be terminated if the new MP Pump is altered or modified in any way.
2. Accidents, Normal Maintenance, Failure To Follow MP PUMPS' Instruction Bulletin.
3. Any MP Pump which is not completely and properly decontaminated prior to return to MP PUMPS.
4. Any MP Pump returned without an identification of the material pumped by your MP Pump on the "Return Goods Authorization Form."

This warranty covers only parts of a new MP Pump which are found upon examination to be defective in material or workmanship as delivered to the original consumer purchaser. This warranty does not cover defects caused by depreciation or damage caused by normal wear, accidents, improper maintenance, improper use or abuse of the product, failure to follow the instructions contained in an Instruction Bulletin for the operation of the pump and parts. The cost of normal maintenance and replacement of service items which are not defective, shall be paid for by the original consumer purchaser. This warranty is VOID if an MP Pump is not decontaminated prior to return to MP PUMPS or if the material pumped is not identified as provided below.

C. SECURING WARRANTY SERVICE

Warranty service can be arranged by contacting MP PUMPS, Inc., c/o Service Manager, 34800 Bennett Drive, Fraser, Michigan 48026. Warranty service can only be performed by MP PUMPS at its factory in Fraser, Michigan. At the time of requesting warranty service, evidence must be presented of the date of sale to the original consumer purchaser. MP PUMPS, at its option, will supply you with a "Return Goods Authorization Form" ("RGA") or will prepare an RGA on your behalf and provide you with an RGA reference number. The product pumped must be identified on the RGA. All parts returned to MP PUMPS for any reason must be completely and properly decontaminated prior to delivery to MP PUMPS. If the product pumped requires a Material Safety Data Sheet ("MSDS"), reference to this fact must be indicated under "Application Information" on the RGA form which must be returned with the part(s) or if an RGA was completed on your behalf you must provide your RGA reference number. A copy

of the MSDS must also be included with the returned RGA forms or with your RGA reference number. New or unused parts need not be decontaminated. This fact must be indicated under "Application Information" on the RGA form which must be returned with the part(s). The original consumer purchaser shall pay any charges for making service calls and/or for transporting the product to and from the place where the inspection and/or warranty work is performed. The part submitted for inspection and/or warranty work will be returned to the sender at the sender's expense or scrapped at MP PUMPS. No credits will be issued. The original consumer purchaser shall be responsible for any damage or loss incurred in connection with the transportation of the MP Pump and/or of part or parts of the MP Pump submitted for inspection and/or warranty work.

D. NO ADDITIONAL WARRANTIES OR REPRESENTATIONS

The foregoing EXPRESS WARRANTY IS IN LIEU OF ALL OTHER EXPRESS WARRANTIES. Neither MP PUMPS nor any of its affiliates make any warranties, representations or promises, written or verbal, as to the quality of the MP PUMP or its parts other than those set forth herein.

ANY IMPLIED WARRANTIES (INCLUDING, BUT NOT LIMITED TO MERCHANTABILITY OR FITNESS FOR A PARTICULAR PURPOSE) TO THE EXTENT EITHER APPLIES TO A PART OF AN MP PUMP SHALL BE LIMITED IN DURATION TO THE PERIODS OF THE EXPRESS WARRANTIES AS DEFINED IN PARAGRAPH A. Some States do not allow limitations on how long an implied warranty lasts, so the above limitations may not apply to you.

E. LIMITATION OF DAMAGES

IN NO EVENT WILL MP PUMPS BE LIABLE FOR ANY INCIDENTAL, CONSEQUENTIAL OR SPECIAL DAMAGES AND/OR EXPENSES. Some States do not allow the exclusion or limitation of incidental or consequential damages, so the above limitation may not apply to you. This warranty gives you specific legal rights, and you may have other legal rights which vary from State to State.

F. NO DISTRIBUTOR/DEALER WARRANTY

MP PUMPS neither assumes nor authorizes any other person, natural or corporate, to assume for MP PUMPS any other obligations or liabilities in connection with or with respect to any part or parts of an MP Pump. The seller, dealer or distributor of a part or parts of an MP Pump has no authority to make any representations or promises on behalf of MP PUMPS or to modify the terms or limitations of this warranty in any way. The seller, dealer or distributor makes no warranty of his own on any item warranted by MP PUMPS and makes no warranty on other items, unless such seller or dealer delivers to the purchaser a separate written warranty document in which the seller or the dealer individually and specifically on its own behalf, warrants the terms of items.

MP PUMPS, INC.

34800 BENNETT DRIVE • FRASER, MI 48026-1694
(810) 293-8240 • FAX (810) 293-8649