



LS PUMP

- MARINE
- COMMERCIAL
- INDUSTRIAL

CIRCULATOR PUMP

316 STAINLESS STEEL
INVESTMENT CAST
CONSTRUCTION

SUPERIOR
CORROSION
RESISTANCE

115V AC MOTOR

3/4" Flanges

CARBON/CERAMIC/VITON
SEAL

EASY INSTALLATION

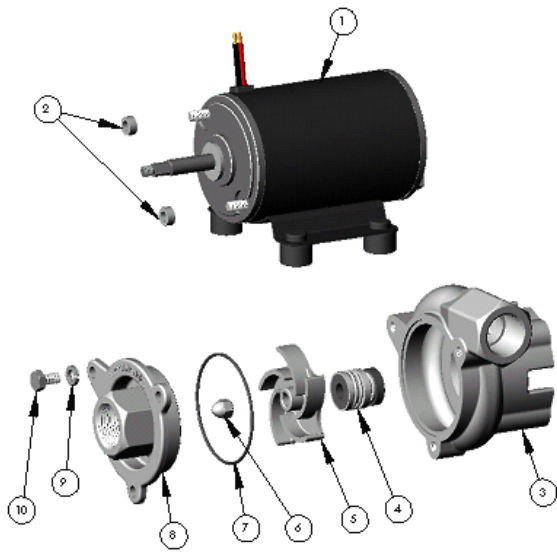
Form 8117 (08-04)

The LS is a high performance stainless steel circulator pump. Its uses are marine, commercial, and industrial transfer of chemicals or potable water.

All pump parts are 316 stainless for superior corrosion resistance when pumping chemical compounds. A carbon, ceramic, viton, bellows shaft seal is standard. 3/4 inch NPT flanges and base mounted vibration isolators simplify installation.

SPECIFICATIONS

| | |
|----------------------|--|
| Housing..... | 316 Stainless Steel (investment cast) |
| Cover..... | 316 Stainless Steel (investment cast) |
| Impeller..... | 316 Stainless Steel, Semi-open (sintered PM) |
| Mechanical Seal..... | Carbon/Ceramic/Viton Bellows 150 PSI Special seals upon request |
| O-Ring..... | Viton |
| Motor..... | 115v ac single phase PSC |
| Size..... | 8 x 4.5 x 4.5 inches |
| Weight..... | 7.7 lbs. |



| ITEM | QTY. | PART NO. | DESCRIPTION |
|------|------|----------|-------------------|
| 1 | 1 | 34036 | 12 VDC MOTOR |
| | | 34293 | 24 VDC MOTOR |
| | | 34294 | 32 VDC MOTOR |
| | | 34295 | 110 VAC MOTOR |
| 2 | 2 | 34369 | GROMMET |
| 3 | 1 | 34032 | HOUSING- 316 SS |
| 4 | 1 | 34038 | MECH SEAL- VITON |
| 5 | 1 | 34033 | IMPELLER- 316 SS |
| 6 | 1 | 28766 | ACORN NUT 316 SS |
| 7 | 1 | 34040 | ORING- VITON |
| 8 | 1 | 34035 | COVER- 316 SS |
| 9 | 3 | 33564 | LOCKWASHER 316 SS |
| | | | |

LS PUMP PSC MOTOR
3/4" NPT X 3/4" NPT
3500 RPM

