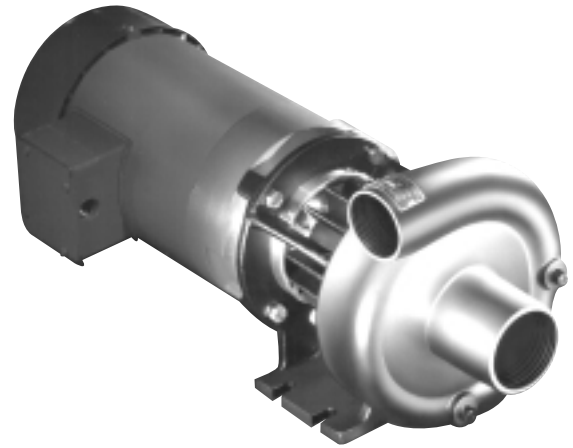


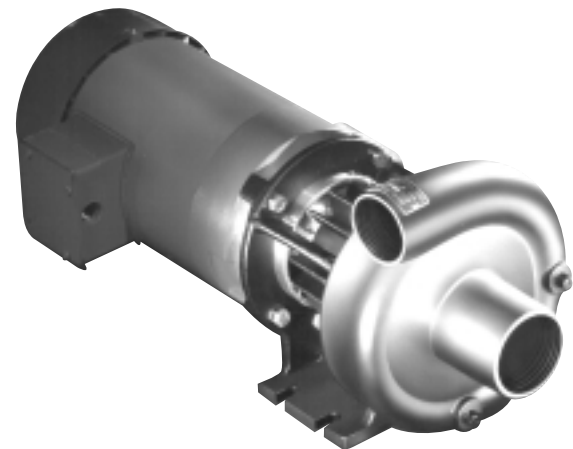
HTO 80 120 300

CENTRIFUGAL HOT OIL PUMP FEATURES

- APPLICATIONS: PLASTICS, CHEMICAL, FOOD, AND PROCESSING INDUSTRIES WHICH REQUIRE PUMPING OF HIGH TEMPERATURE FLUIDS
- UTILIZES AN ISOLATED SEAL CHAMBER, EFFECTIVELY COOLED BY A FAN CLAMP, WHICH COUPLES THE UNIT TO THE SHAFT OF A C-FRAME MOTOR
- STANDARD CARBON/CERAMIC MECHANICAL SEAL WITH VITON ELASTOMERS, STAINLESS STEEL FITTED
- CARBON GRAPHITE ISOLATOR BUSHING SEPARATES MECHANICAL SEAL FROM HIGH TEMPERATURE FLUIDS
- STAINLESS STEEL DRIVE SLEEVE AND ALUMINUM DRIVE CLAMP COUPLES PUMP UNIT TO MOTOR
- VERTICAL & HORIZONTAL DISCHARGE
- WITH OR WITHOUT ELECTRIC MOTOR
- A UNIQUE CENTRIFUGAL PUMP (PATENTED) DESIGNED FOR HIGH TEMPERATURE APPLICATIONS WITHOUT REQUIRING EXTERNAL FLUSHES OR JACKET COOLING
- CAPACITIES - 85-200 GPM
- HEADS - 135-140 FT. TDH.
- TEMPERATURES - TO 650°F



HTO 80



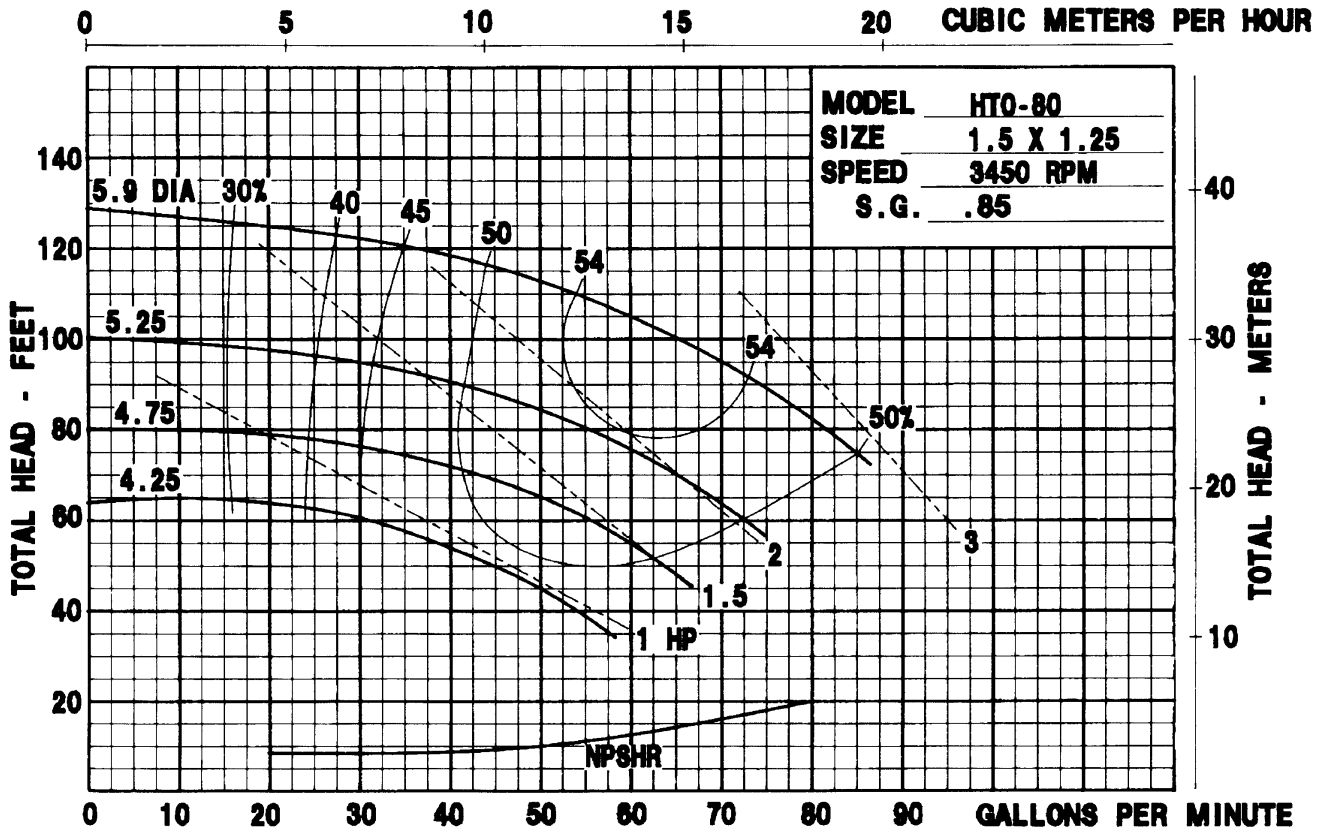
HTO 120



HTO 300

| MODEL | Suction | Discharge |
|---------|----------------------------|----------------------------|
| HTO 80 | 1 1/2" NPT (Flange Option) | 1 1/4" NPT (Flange Option) |
| HTO 120 | 2" NPT (Flange Option) | 1 1/2" NPT (Flange Option) |
| HTO 300 | 3" ANSI 125 Flange | 2 1/2" ANSI 125 Flange |

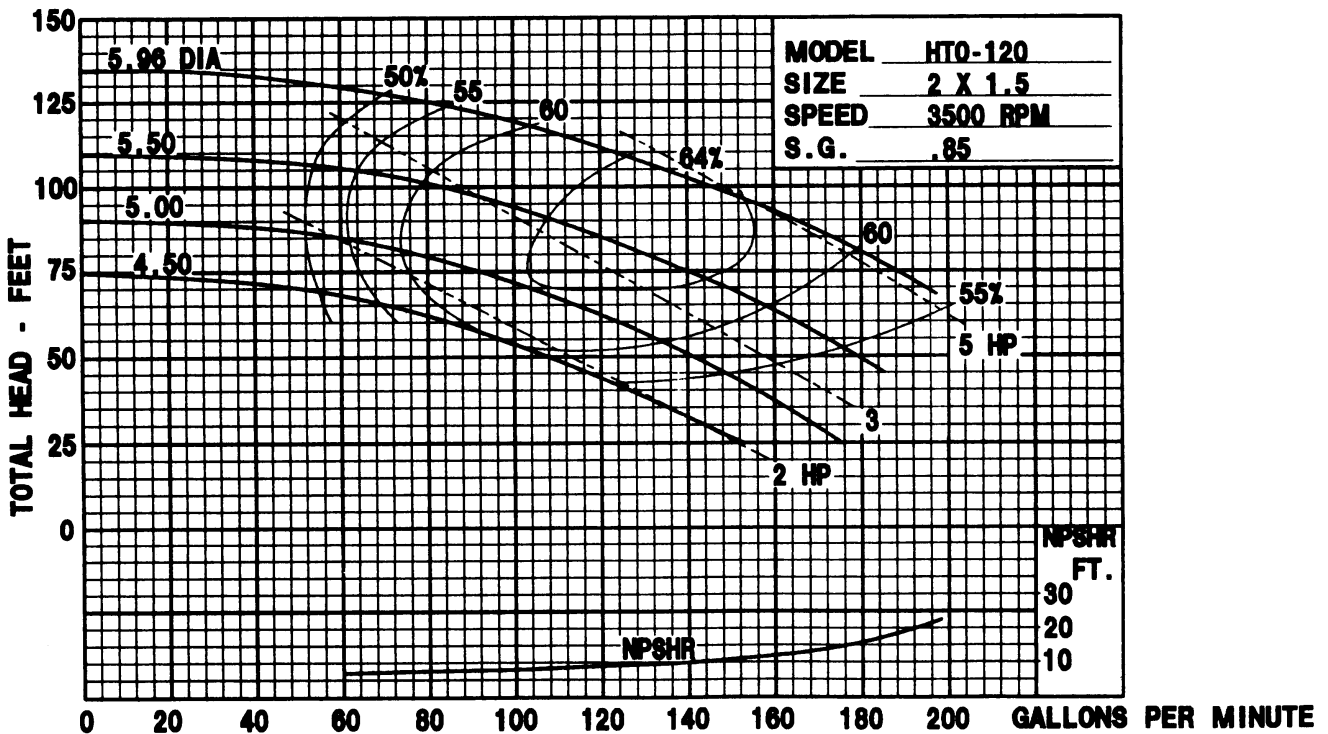
HTO 80 Pump Performance Curves



Horsepower requirements based upon 0.85 specific gravity. Calculations can be applied for fluids of other specific gravities.

Maximum operating temperature is 650°F. Maximum working pressure is 150 PSI.

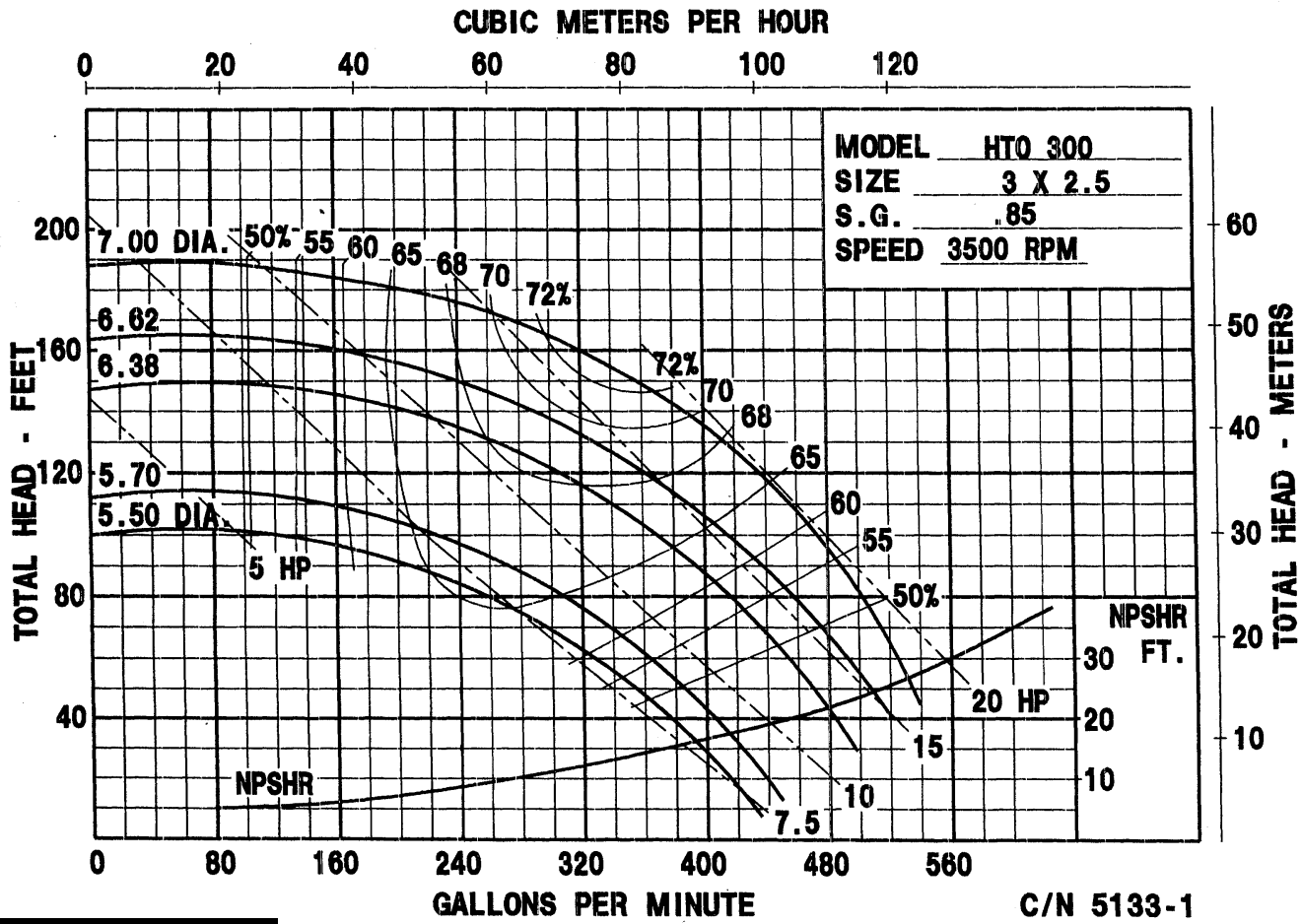
HTO 120 Pump Performance Curves



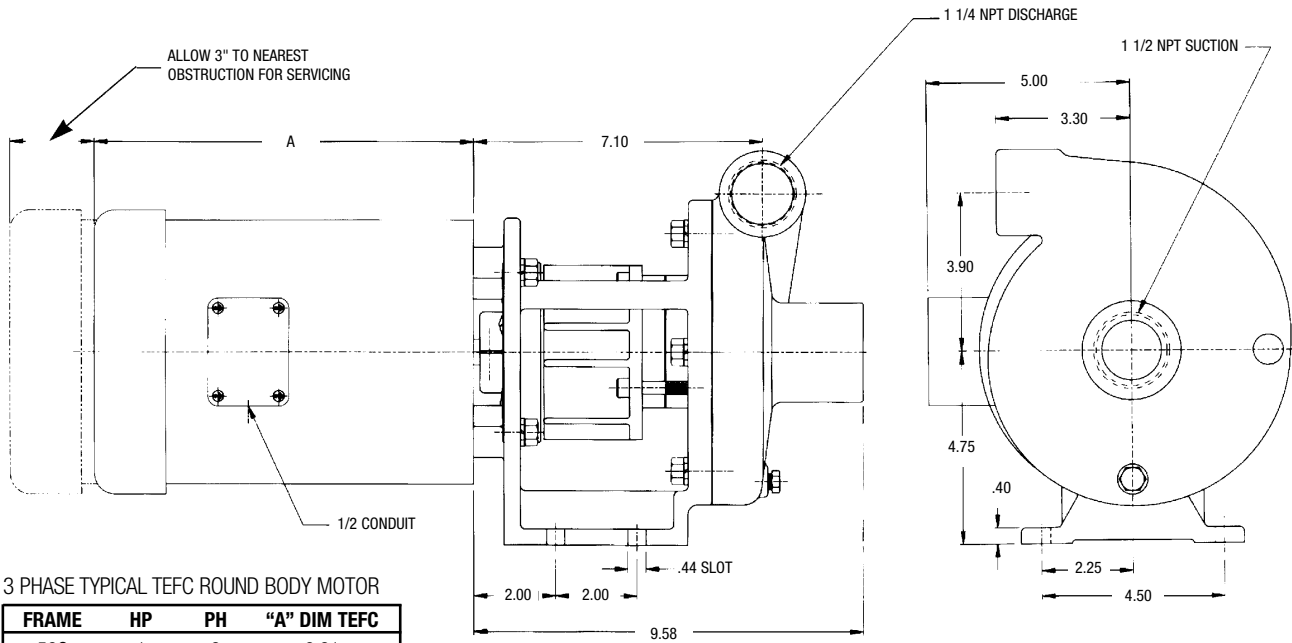
Horsepower requirements based upon 0.85 specific gravity. Calculations can be applied for fluids of other specific gravities.

Maximum operating temperature is 650°F. Maximum working pressure is 150 PSI.

HTO 300 Pump Performance Curves



HTO 80 Dimensions

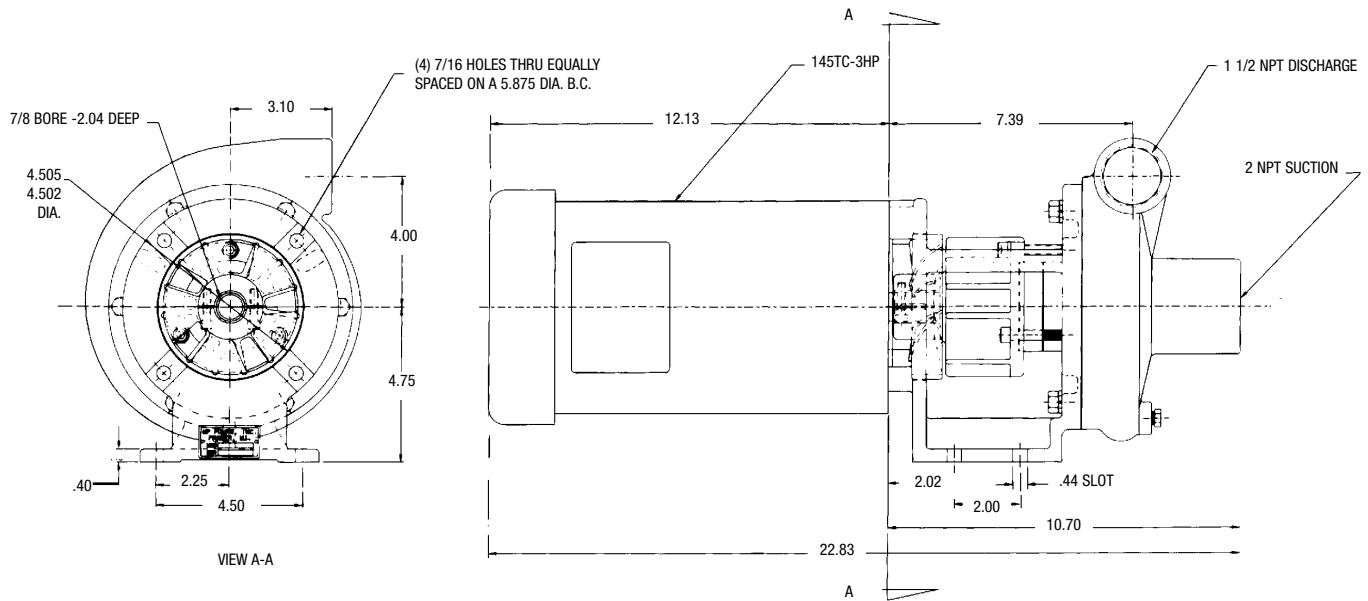


3 PHASE TYPICAL TEFC ROUND BODY MOTOR

| FRAME | HP | PH | "A" DIM TEFC |
|-------|-----|----|--------------|
| 56C | 1 | 3 | 9.31 |
| 56C | 1.5 | 3 | 9.94 |
| 56C | 2 | 3 | 11.25 |
| 56C | 3 | 3 | 12.12 |

Pump dimensions certifiable for construction purposes.
 Motor dimensions dependent upon motor manufacturer.

HTO 120 Dimensions



Pump dimensions certifiable for construction purposes.
 Motor dimensions dependent upon motor manufacturer.

HTO 300 Dimensions

