

CHEMFLO 5,6,7,8 hydraulic driven pumps are available with two hydraulic motor displacement options. The hydraulic motor is close-coupled to the bearing frame with a standard SAE B flange and driven with a 13-tooth shaft.

PUMP SPECIFICATIONS

| | |
|------------------------------|--|
| Flanges | 150# Class |
| Housing | 316 Stainless Steel |
| Impeller | Enclosed 316 Stainless Steel |
| Seal Plate | 316 Stainless Steel |
| Shaft Sleeve | 316 Stainless Steel |
| Seal | Viton / carbon / ceramic Optional seals are available |
| O'Ring | Viton or teflon optional |
| Bearings | Grease lube 6309 |
| Hydraulic Motor | Gear type, Commercial Intertech, pressure balanced, cast iron, bi-rotational |

CHEMFLO

5 - 8

Hydraulic Drive
Stainless Steel
Centrifugal Pumps

4 Pumps
2 Motors

Mount Anywhere
Remote Control
No Alignment Required

CHEMFLO 5 2" X 1 1/2" X 6"
CHEMFLO 6 3" X 2" X 6"
CHEMFLO 7 2" X 1" X 8"
CHEMFLO 8 3" X 1 1/2" X 8"

FLOW RATE UP TO 500 GPM
PRESSURE UP TO 340 FEET

OIL FLOW RATE UP TO 28 GPM

OIL PRESSURE UP TO 2500 PSI

HYDRAULIC MOTOR
STANDARD SAE "B"
SPLINE SHAFT

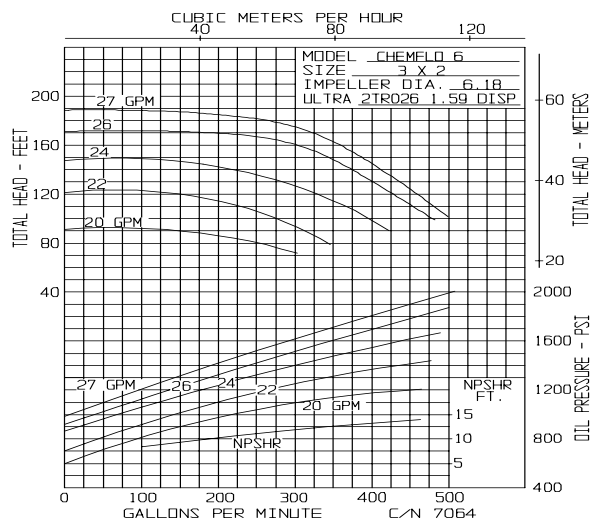
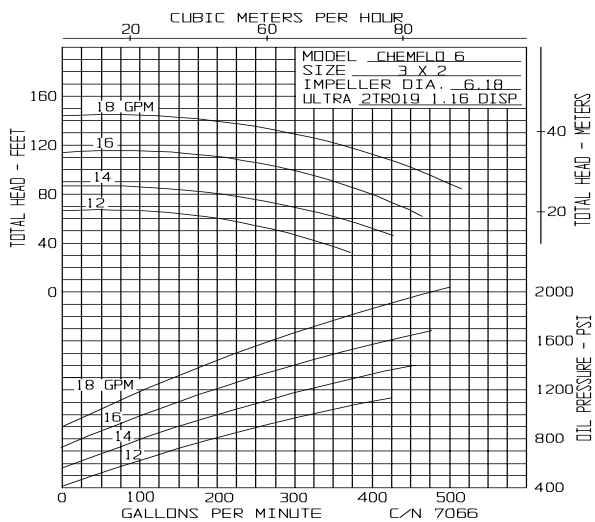
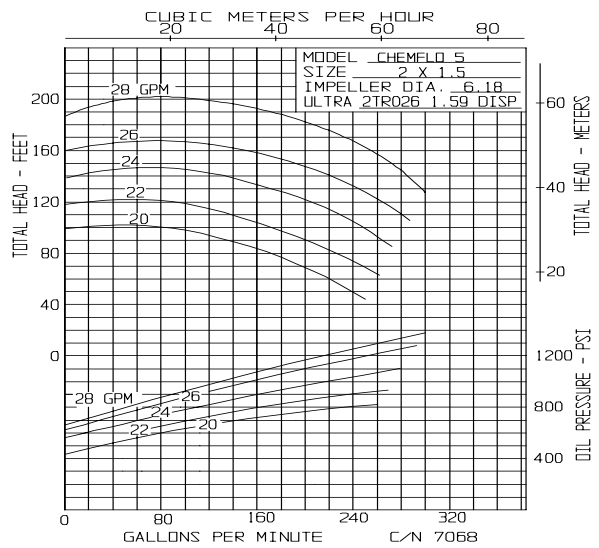
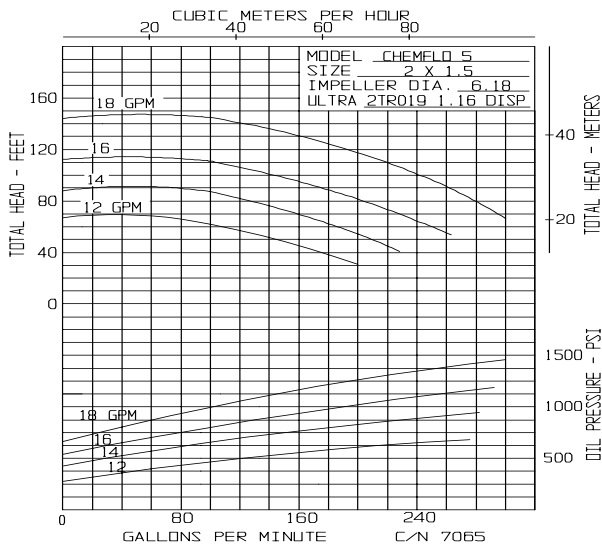
AVAILABLE WITHOUT THE
HYDRAULIC MOTOR

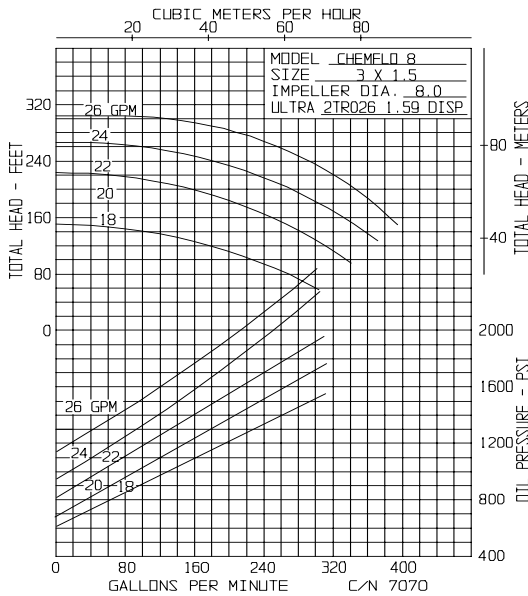
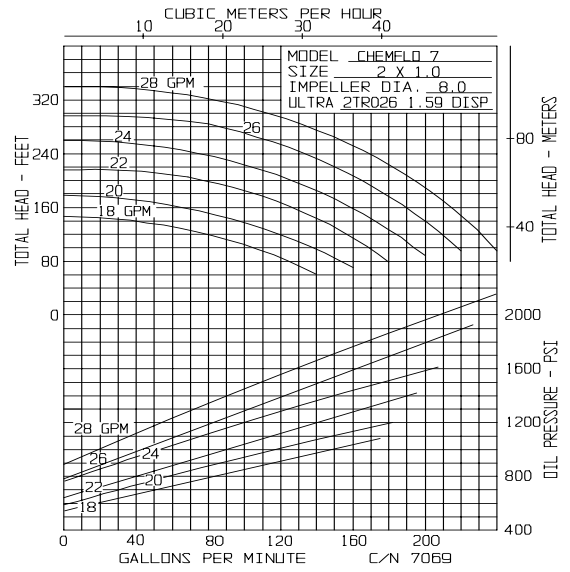
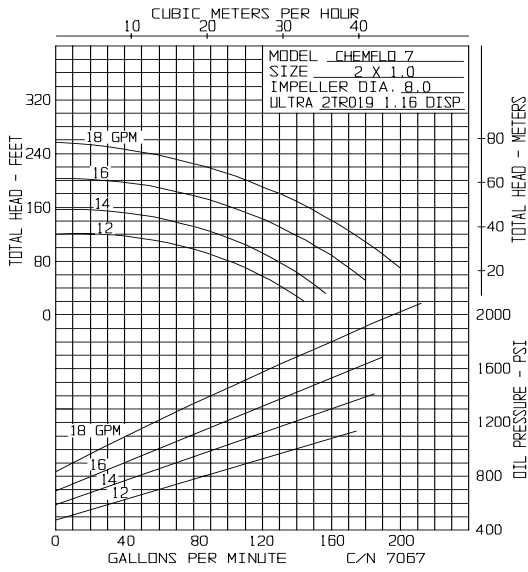
CHEMFLO 5-8

HYDRAULIC MOTOR SPECIFICATIONS

Model Number: 2TR019
Displacement: 1.16 IN³/REV
Max. Oil Flow: 20 G.P.M.
Max. Oil Pressure: 3000 P.S.I.
Max. Back Pressure: 150 P.S.I.
Seal (Lip): Viton
Hydraulic Connections: 1 1/16-12 SAE O'Ring

Model Number: 2TR026
Displacement: 1.59 IN³/REV
Max. Oil Flow: 30 G.P.M.
Max. Oil Pressure: 3000 P.S.I.
Max. Back Pressure: 150 P.S.I.
Seal (Lip): Viton
Hydraulic Connections: 1 1/16-12 SAE O'Ring





| PUMP | CF5 | CF6 | CF7 | CF8 |
|------------|-------------|-----------|-----------|-------------|
| SIZE | 2 X 1.5 X 6 | 3 X 2 X 6 | 2 X 1 X 8 | 3 X 1.5 X 8 |
| FLOW (GPM) | 300 | 500 | 200 | 400 |
| TDH (FT) | 200 | 160 | 320 | 280 |

OPTIONAL SEALS

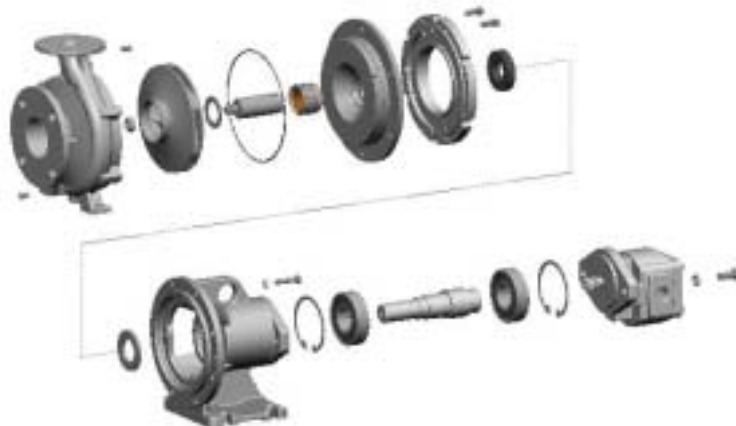
- TYPE 9 - CARBON CERAMIC TEFLON
- TYPE 2 - SILICON CARBIDE VITON
- TYPE 21 - CARBON CERAMIC VITON

TYPICAL PERFORMANCE

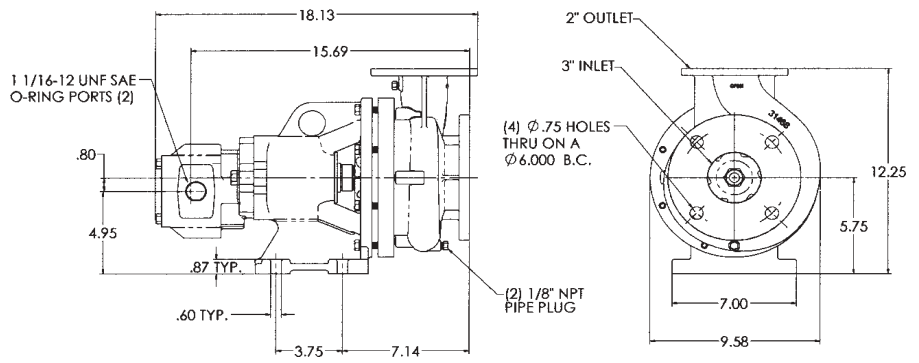
10WT INDUSTRIAL OIL
 120 - 180° F OIL TEMPERATURE

WHEN PUMPING LIQUIDS HEAVIER THAN WATER, PRESSURE WILL INCREASE DIRECTLY PROPORTIONAL TO THE SPECIFIC GRAVITY.

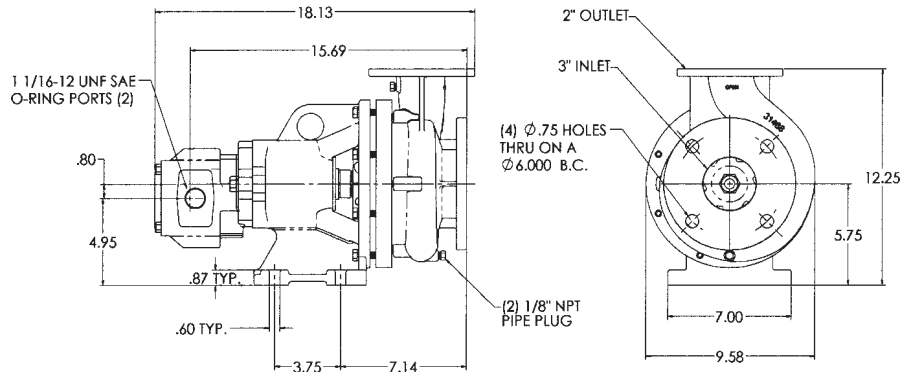
MAXIMUM WORKING PRESSURE NOT TO EXCEED 200 PSI.



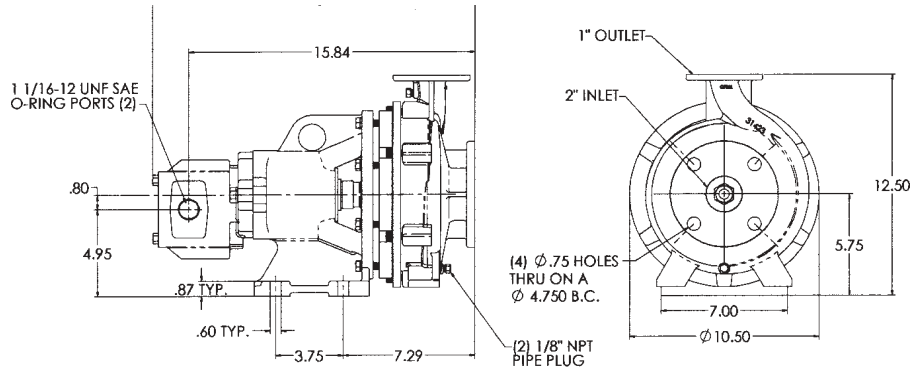
CHEMFLO 5
2TR019



CHEMFLO 6
2TR019



CHEMFLO 7
2TR026



CHEMFLO 8
2TR026

