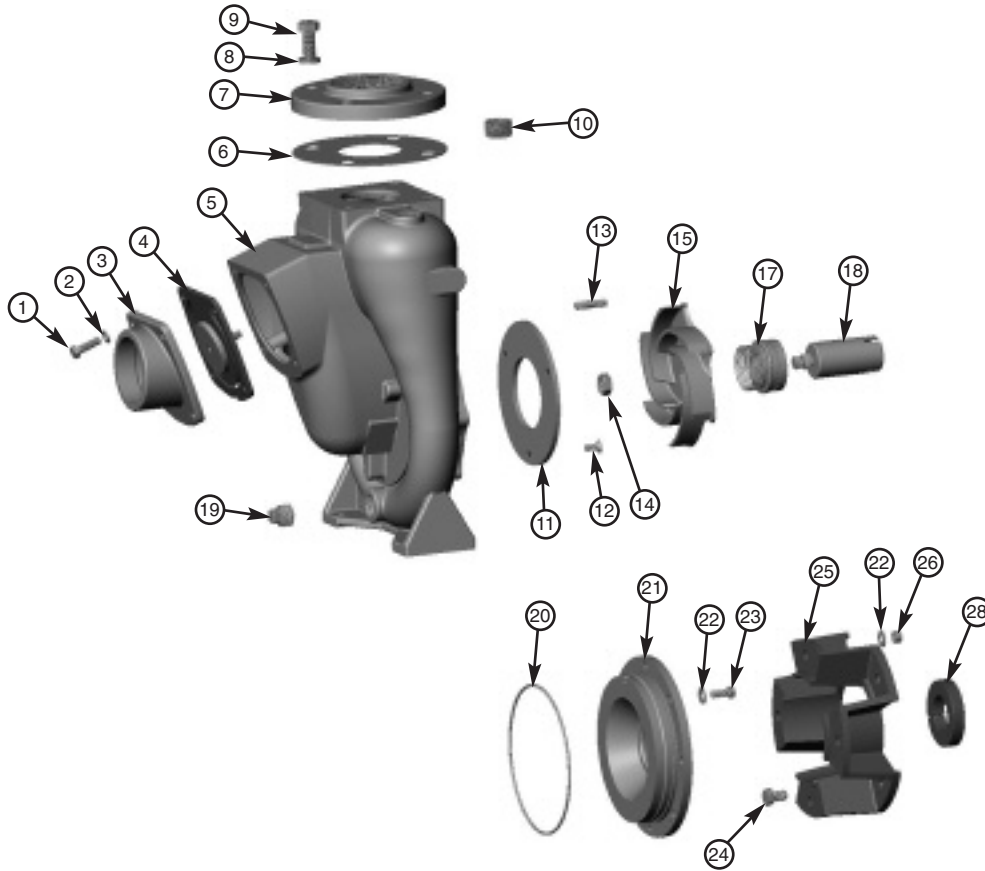


MP PUMPS SERVICE PARTS LIST

FLOMAX 30 Single Seal

CC Pumpak



PART NO.	ITEM NO.	DESCRIPTION	QTY.	PART NO.	ITEM NO.	DESCRIPTION	QTY.
21274	1	Capscrew SS 3/8-16 x 1.25"	4	31374	17	Mechanical Seal*	1
21266	2	Lockwasher SS 3/8"	6	31831	18	Drive Sleeve 1"*	1
40537	3	Inlet Flange	1	31094	18	Drive Sleeve 1.125"*	1
42147	4	Flapper Assembly*	1	31311	18	Drive Sleeve 1.375"*	1
31822	5	Housing	1	31833	18	Drive Sleeve 1.625"*	1
32034	6	Gasket*	1	41481	19	Pipe Plug 3/4" NPT	1
32033	7	Discharge Flange - 3" NPT	1	32020	20	O-Ring Viton*	1
26853	8	Lockwasher - 5/8"	4	31824	21	Seal Housing	1
32018	9	Capscrew SS 5/8-11 x 1.5"	4	28053	22	Washer SS 3/8"	8
22379	10	Pipe Plug - 1" NPT	1	21251	23	Capscrew SS 3/8-16 x .875"	4
31830	11	Wearplate*	1	33160	24	Capscrew SS 7/16-14 x .75"	4
32026	12	Flat Head Screw SS 5/16-18 x .75"*	3	31829	25	Adaptor - Engine	1
33161	13	Stud SS 3/8-16 x 2.0"	4	31907	25	Adaptor - 184/215TC Motor	1
29194	14	Hex Jam Nut SS 5/8-18*	1	31892	25	Adaptor - 256TC Motor	1
31819	15	Impeller 7.0"*	1	33688	25	Adaptor - 286TSC Motor	1
33177	15	Impeller 6.75"*	1	21268	26	Hex Nut SS 3/8-16	6
33178	15	Impeller 6.35"*	1	21269	27	Capscrew SS 3/8-16 x 2.25"	2
31838	16	Spacer	1	22356	28	Drive Clamp	2

*-RECOMMENDED REPLACEMENT PARTS



MP PUMPS, INC.
TECUMSEH PRODUCTS COMPANY
 34800 BENNETT DRIVE • FRASER, MI 48026-1686
 (586) 293-8240 • FAX (586) 293-8469
 (800) 563-8006

Form 7096-A

01/06