



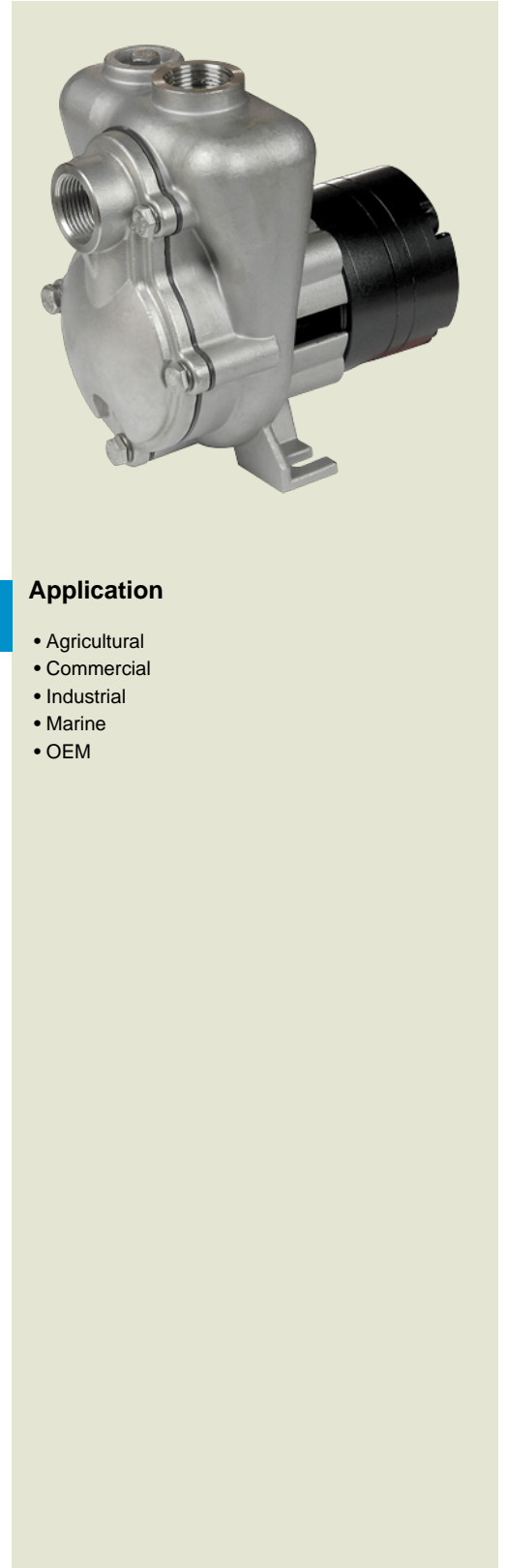
# FMX 75 HYDRAULIC

## 3/4" x 3/4" Self Priming Centrifugal Pump

Model FMX75 Hydraulic is a high performance self-priming 316 stainless steel centrifugal pump close coupled to a hydraulic motor. The pump is ideal for marine, agricultural, and industrial applications where suction lift is required.

The FMX75 HYD model features all 316 stainless steel components for superior corrosion resistance when pumping chemical compounds. A carbon / ceramic / Viton bellows shaft seal is standard. Ports are 3/4" NPT with a 1/8" NPT fill port. The check valve flapper design enhances the self priming capability to 12 foot suction lift.

The hydraulic motor is designed with SAE #6 ports for the tank side while the pressure side has SAE # 4 ports. Maximum Pressure is 1000 PSI. Maximum oil flow is 3 GPM.

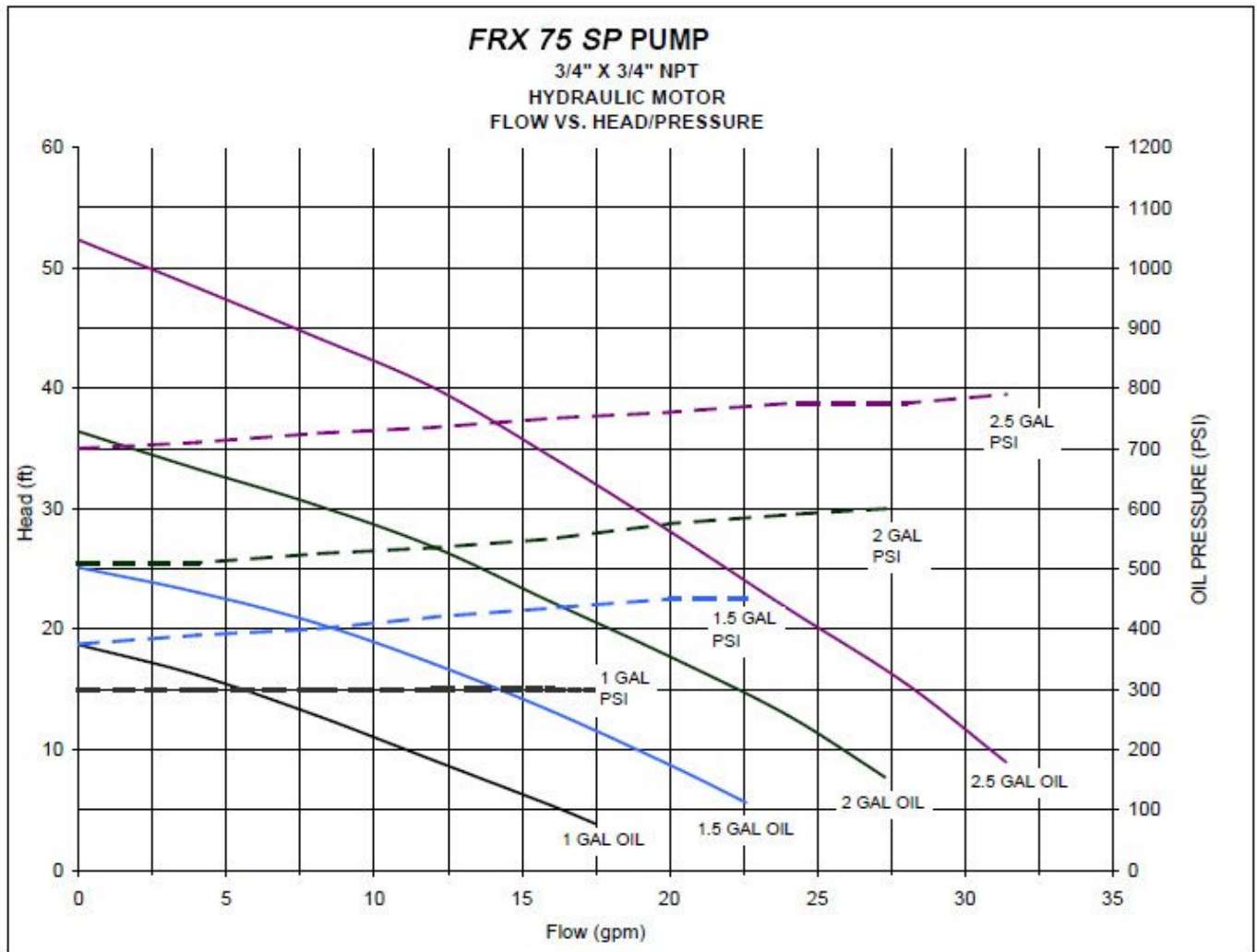


### SPECIFICATIONS:

|                           |   |
|---------------------------|---|
| Suction And Discharge     | 3/4" NPT x 3/4" NPT   |
| Materials Of Construction | 316 stainless steel   |
| Flow                      | Up to 30 GPM  |
| Head Feet                 | Up to 50'   |
| Impeller                  | 316 stainless steel semi-open                                 |
| Drive Options             | Hydraulic motor .08 cu. in.                                   |
| Seal                      | Special seals upon request, Standard carbon / ceramic / Viton |
| Psi                       | Up to 21 PSI  |
| Hydraulic Fluid Flow      | Up to 2.5 GPM   |
| Patent                    | US PATENT # 8,202,046 B2                                      |
| Hydraulic System Pressure | Up to 800 PSI   |

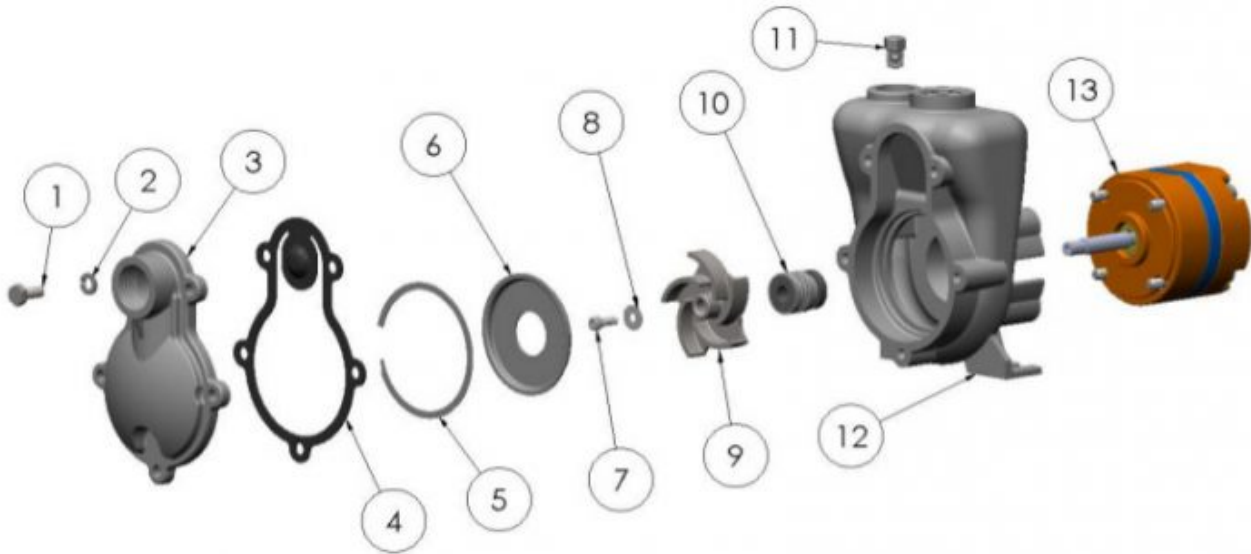
### Application

- Agricultural
- Commercial
- Industrial
- Marine
- OEM





36212



| ITEM NO. | PART NO. | DESCRIPTION                       | QTY. |
|----------|----------|-----------------------------------|------|
| 1        | 35039    | H.H. CAPSCREW SS - 1/4-20 X 5/8   | 5    |
| 2        | 33564    | LOCKWASHER SS - 1/4               | 5    |
| 3        | 35024    | COVER-SS                          | 1    |
| * 4      | 35025    | GASKET-VITON                      | 1    |
| 5        | 35027    | RETAINING RING - S.S.             | 1    |
| * 6      | 35026    | WEAR PLATE-SS                     | 1    |
| 7        | 38106    | CAPSCREW SS - 10-24 X .50         | 1    |
| 8        | 38107    | LOCKWASHER SS - 3/16              | 1    |
| 9        | 34033    | IMPELLER SS - PM                  | 1    |
| * 10     | 36863    | SEAL ASY. TYPE 21 - 3/8"          | 1    |
| 11       | 21255    | FILL PLUG SS - 1/8                | 1    |
| 12       | 35022    | HOUSING-SS                        | 1    |
| 13       | 36209    | HYDRAULIC MOTOR ASY               | 1    |
| 14       | 36197    | CAPSCREW STL 1/4-20X 2.25 N/SHOWN | 2    |

\* - RECOMMENDED REPLACEMENT PARTS