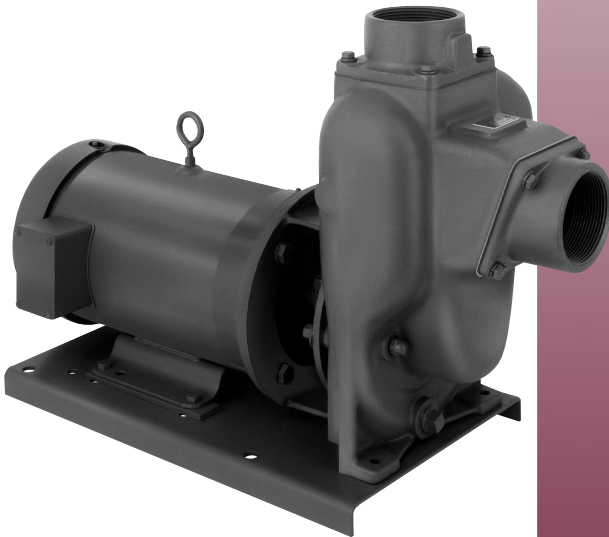


# FLOMAX 10

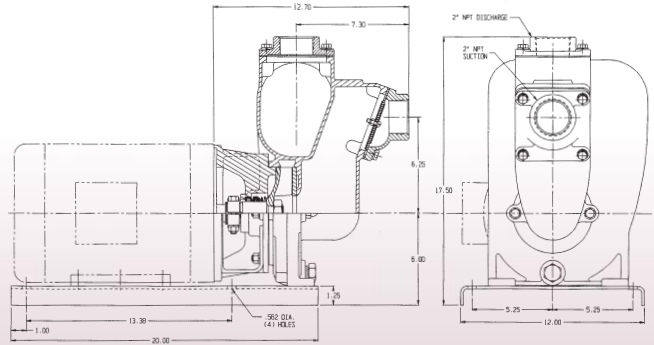
# SELF PRIMING CENTRIFUGAL PUMPS

## Features & Options

- 2" X 2" SELF PRIMING CENTRIFUGAL PUMP
- CLOSE COUPLED TO ELECTRIC MOTOR
- PUMPAK ONLY TO MOUNT TO STANDARD NEMA "C" FACE MOTOR 5HP, 7.5HP
- FLOWS TO 210 GPM
- PRESSURES TO 130 FEET HEAD
- AVAILABLE IN: CAST IRON, BRONZE OR ALUMINUM CONSTRUCTION
- WITH OR WITHOUT ELECTRIC MOTOR
- IMPELLER—CAST IRON, BRONZE, ALUMINUM OR STAINLESS STEEL
- SHAFT SLEEVE—STAINLESS STEEL
- FASTENERS—STAINLESS STEEL
- SEALS—STANDARD VITON, OPTIONAL SEALS AVAILABLE (CONSULT FACTORY)
- OPTIONS: —ENGINE DRIVES  
—PEDESTAL MODELS  
—HYDRAULIC DRIVES  
—CLUTCHPAKS



### DIMENSIONS



### Pump Performance Curves

