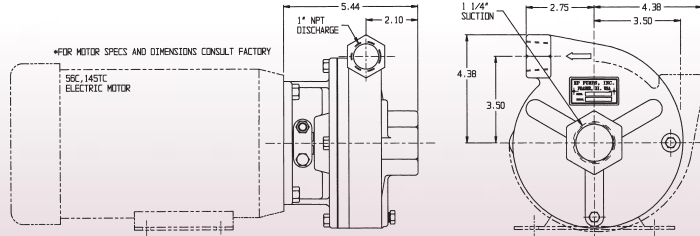


Features & Options

- 1 1/4" X 1" CENTRIFUGAL PUMP
- CLOSE COUPLED TO ELECTRIC MOTOR
- OR PUMPAK ONLY TO MOUNT TO STANDARD NEMA "C" FACE MOTOR 1HP, 1.5HP, 2HP
- FLOWS TO 60 GPM
- PRESSURES TO 110 FEET HEAD
- AVAILABLE IN CAST IRON
- VERTICAL OR HORIZONTAL DISCHARGE
- WITH OR WITHOUT ELECTRIC MOTOR
- IMPELLER—CAST IRON OR BRONZE ENCLOSED
- SHAFT SLEEVE—STAINLESS STEEL TO FIT 5/8" SHAFT
- FASTENERS—STAINLESS STEEL
- SEALS—STANDARD VITON, OPTIONAL SEALS AVAILABLE (CONSULT FACTORY)
- OPTIONS: —HYDRAULIC DRIVES

DIMENSIONS



Pump Performance Curves

