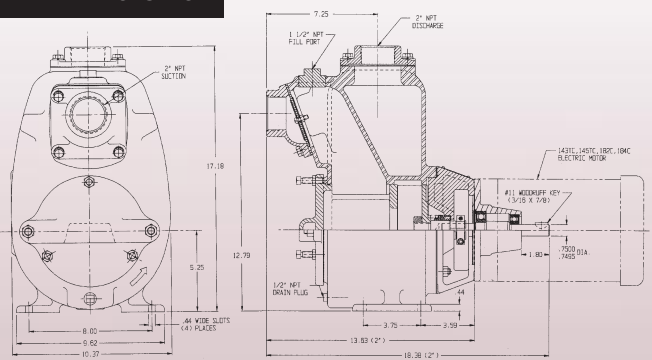


## Features & Options

- 2" X 2" SELF PRIMING TRASH PUMP
- CLOSE COUPLED TO ELECTRIC MOTOR OR PEDESTAL FOR STANDARD MOTOR
- FLOWS TO 210 GPM
- PRESSURES TO 125 FEET HEAD
- CAST IRON CONSTRUCTION
- ELECTRIC MOTOR DRIVE
- IMPELLER—DUCTILE IRON
- SHAFT SLEEVE—304 STAINLESS STEEL
- FASTENERS—STAINLESS STEEL
- SEALS—CARBON/CERAMIC VITON MECHANICAL SEAL
- OPTIONS: —ENGINE DRIVES  
—HYDRAULIC DRIVES

### DIMENSIONS



### Pump Performance Curves

